

STAINLESS STEEL FITTINGS PN20

ISO 9001:2008
BUREAU VERITAS
Certification



Size : DN 1/8" to DN 4"
Ends : Male, female or welding
Min Temperature : - 25°C
Max Temperature : + 180°C
Max Pressure : 20 Bars
Specifications : "Lost wax" moulding
Threaded BSP

Materials : Stainless steel

STAINLESS STEEL FITTINGS PN20

SPECIFICATIONS :

- " Lost wax " moulding
- Male conic threaded BSP
- Female cylindric threaded BSP

USE :

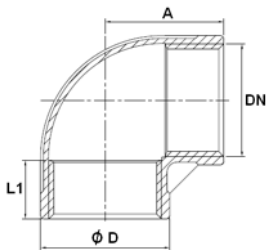
- For all common fluids
- Min Temperature Ts : - 25°C
- Max Temperature Ts :+ 180°C
- Max Pressure Ps : 20 bars

RANGE :

- From DN 1/8" to DN 4"
- ASTM A351 CF8M fittings excepted for Ref.2034, 2038, 2039, 2040, 2041 and 2042 in SS ASTM A182 F316

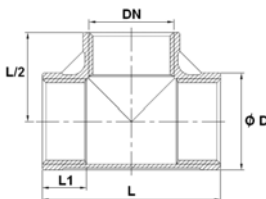
SIZE (in mm) :

- Elbow 90° F. F. (DN 1/8" – 4") Ref. 2001



DN	1/8"	1/4"	3/8"	1/2"	3/4"	1"	1"1/4	1"1/2	2"	2"1/2	3"	4"
A	17	19	21.5	27	30	35	43	45	54	69	77	92.5
Ø D	13.9	17.4	20.9	24.9	31.2	38.1	47.4	54.1	66.6	82.4	95.9	121.8
L1	6.7	10.2	10.4	13.5	13.9	17.3	18	18.4	19.2	28.9	30.5	33
Weig. (Kg)	0.018	0.029	0.043	0.053	0.079	0.131	0.204	0.263	0.433	0.757	1.083	1.724

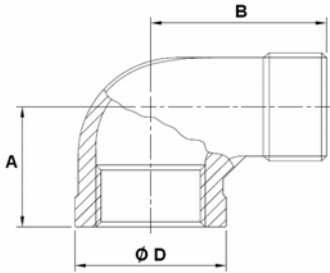
- Tee F. F. F. (DN 1/8" – 4") Ref. 2003



DN	1/8"	1/4"	3/8"	1/2"	3/4"	1"	1"1/4	1"1/2	2"	2"1/2	3"	4"
Ø D	13.9	17.4	20.9	24.9	31.2	38.1	47.4	54.1	66.6	82.4	95.9	121.8
L	34	39	44	55	60	70	85	90	108.5	136	152	182
L1	6.7	10.2	10.4	13.5	13.9	17.3	17.9	18.4	19.2	28.9	30.5	33
Weig. (Kg)	0.026	0.041	0.059	0.073	0.103	0.168	0.260	0.34	0.54	0.878	1.198	2.056

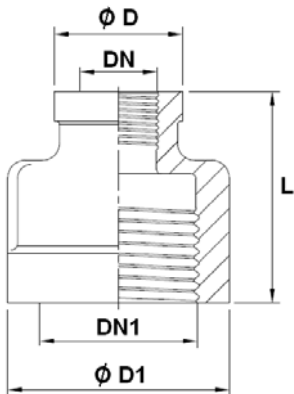
STAINLESS STEEL FITTINGS PN20
SIZE (in mm) :

- Elbow 90° M. F. (DN 1/8"– 3") Ref. 2010



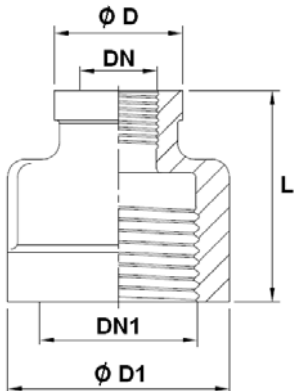
DN	1/8"	1/4"	3/8"	1/2"	3/4"	1"	1"1/4	1"1/2	2"	2"1/2	3"
A	19	21.5	24.5	29	33.5	37	43	47	57.5	66	74
B	26.5	30.8	36.5	41	48	55	62	67	77.5	93	107
Ø D	13.9	17.2	20.9	24.9	31.2	38.1	47.4	54.1	66.6	87.4	101.8
Weig. (Kg)	0.015	0.028	0.043	0.054	0.084	0.139	0.189	0.277	0.412	0.913	1.65

- Reduced nipple F. F. (DN 1/8"– 2") Ref. 2013



DN	1/8"	1/4"	3/8"	1/2"	3/4"	1"	1"1/4	1"1/2
DN1	1/4"	3/8"	1/2"	3/4"	1"	1"1/4	1"1/2	2"
Ø D	15.5	18.2	23	28	34	41.6	50	57
Ø D1	18	22	28.5	34	41.5	50	57	70
L	24	29	34.5	36.5	41.5	47	51.5	59
Weight (Kg)	0.020	0.030	0.066	0.082	0.115	0.186	0.24	0.387

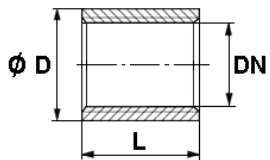
- Double reduced nipple F. F. (DN 1/8"– 2") Ref. 2014



DN	1/8"	1/4"	3/8"	1/2"	3/4"	1"	1"1/4
DN1	3/8"	1/2"	3/4"	1"	1"1/4	1"1/2	2"
Ø D	18.1	19.5	28.2	29	34	41.5	56.5
Ø D1	22	28.5	34	41.5	50	57	70
L	29	34	36.5	42	46	50	59
Weight (Kg)	0.035	0.06	0.092	0.121	0.175	0.235	0.447

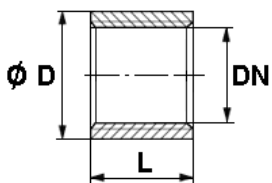
STAINLESS STEEL FITTINGS PN20
SIZE (in mm) :

- Socket bright F. F. (DN 1/8" – 4") Ref. 2015



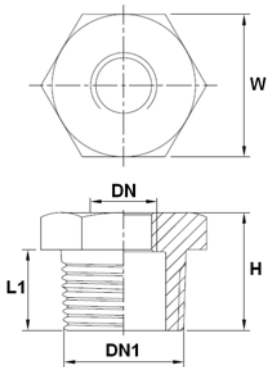
DN	1/8"	1/4"	3/8"	1/2"	3/4"	1"	1"1/4	1"1/2	2"	2"1/2	3"	4"
Ø D	14	18.5	21.5	26.5	32	40	48	55	66	82	95	122
L	17	25	26.5	34	36	43	48	48	56	65	71	83
Weig. (Kg)	0.013	0.031	0.034	0.068	0.084	0.141	0.195	0.235	0.302	0.510	0.670	1.200

- Half socket F. F. (DN 1/8" – 2") Ref. 2017



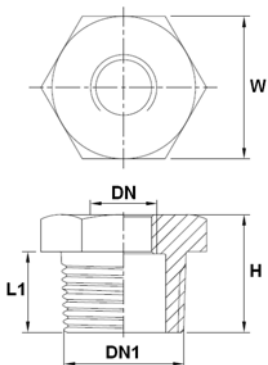
DN	1/8"	1/4"	3/8"	1/2"	3/4"	1"	1"1/4	1"1/2	2"
Ø D	14	19	22	26	32	40	48	55	66
L	10	11	13	16	18	20	22	23	27
Weig. (Kg)	0.008	0.014	0.018	0.029	0.038	0.052	0.086	0.095	0.161

- Reduced nipple M. F. (DN 1/8" – 2") Ref. 2021



DN	1/8"	1/4"	3/8"	1/2"	3/4"	1"	1"1/4	1"1/2
DN1	1/4"	3/8"	1/2"	3/4"	1"	1"1/4	1"1/2	2"
H	17	17.5	22	23	27	30	30	33.5
L1	12.5	13	16	17	20	22	22	23.5
W	17	20	25	30	36.5	45.5	50	62
Weig. (Kg)	0.011	0.017	0.032	0.044	0.072	0.129	0.132	0.262

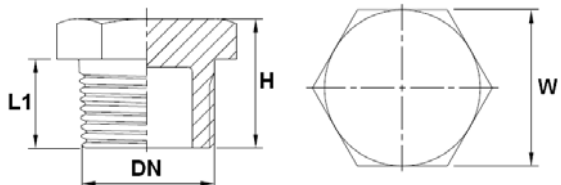
- Double reduced nipple M. F. (DN 1/8" – 2") Ref. 2024



DN	1/8"	1/4"	3/8"	1/2"	3/4"	1"	1"1/4
DN1	3/8"	1/2"	3/4"	1"	1"1/4	1"1/2	2"
H	17.5	22	23	27	30	30	33.5
L1	13	16	17	20	22	22	23.5
W	20	25	30	36.5	45.5	50	62
Weig. (Kg)	0.022	0.036	0.053	0.089	0.158	0.186	0.299

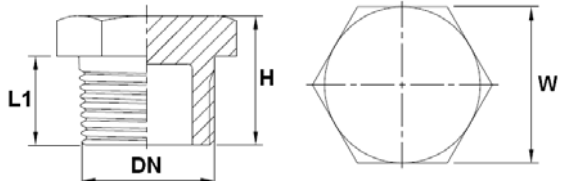
STAINLESS STEEL FITTINGS PN20
SIZE (in mm) :

- Hexagon hollow plug (DN 1/2" – 2") Ref. 2022



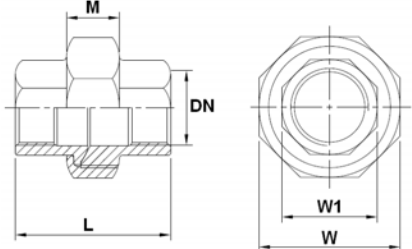
DN	1/2"	3/4"	1"	1"1/4"	1"1/2"	2"
H	22.6	23.3	26.8	30.5	30.8	34
L1	16	16.5	19	21	21	22.8
W	25.2	29.7	36.5	45.3	51.4	62.5
Weight (Kg)	0.040	0.056	0.087	0.141	0.190	0.280

- Hexagon plain plug (DN 1/8" – 2") Ref. 2023



DN	1/8"	1/4"	3/8"	1/2"	3/4"	1"	1"1/4"	1"1/2"	2"
H	19	19	19	22	26	28	33	35	39
L1	11	12	13	16	17	19	21	23	27
W	12	16	19	23	28	36	46	50	65
Weig. (Kg)	0.013	0.024	0.036	0.061	0.115	0.198	0.384	0.509	0.913

- Union F.F. (DN 1/4" – 2") Ref. 2025 - Conical seat



DN	1/4"	3/8"	1/2"	3/4"	1"	1"1/4"	1"1/2"	2"
L	34.5	37.6	38.6	44	51	58	59	61.5
M	12.2	15	15	15	17	20	20	20.8
W	28	34	39.2	46	55	63.5	71	85
W1	17.5	20.5	26.5	31.2	38	47.5	54	67
Weight (Kg)	0.069	0.098	0.149	0.191	0.299	0.386	0.482	0.716

DN 1/4" :



DN 3/8" - 1" :

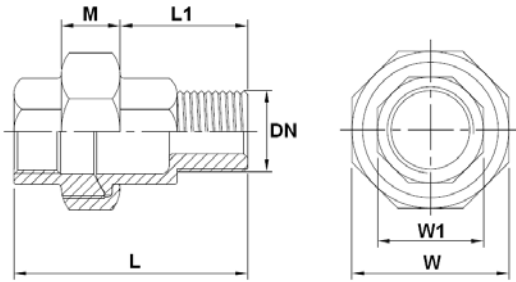


DN 1"1/4 - 2" :



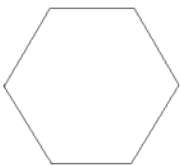
STAINLESS STEEL FITTINGS PN20
SIZE (in mm) :

- Union M.F. (DN 1/4" – 2") Ref. 2026 - Conical seat

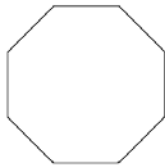


DN	1/4"	3/8"	1/2"	3/4"	1"	1"1/4"	1"1/2"	2"
L	46	48	52.8	58.6	66.5	73.5	74.5	80.5
L1	22.7	21.5	26	28.6	32.2	35	35	39
M	12.2	15	15	15	17	20	20	20.8
W	28	34	39.2	46	55	63.5	71	85
W1	17.2	20.3	26	30.6	38	47.3	53	66
Weight (Kg)	0.074	0.107	0.164	0.224	0.336	0.443	0.538	0.839

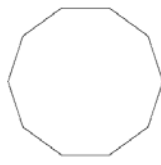
DN 1/4" :



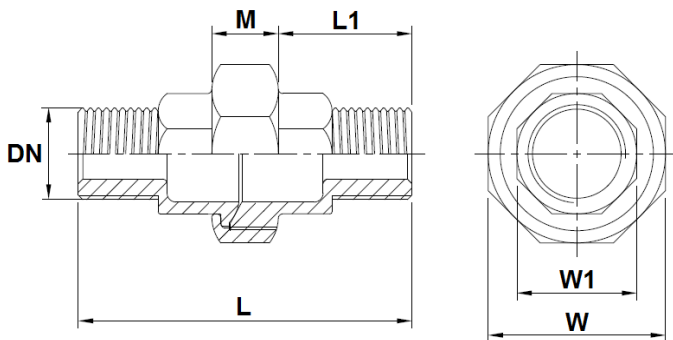
DN 3/8" - 1" :



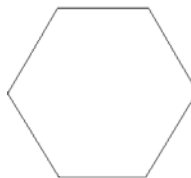
DN 1"1/4 - 2" :



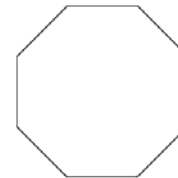
- Union Male - Male (DN 1/4" – 2") Ref. 2062 - Conical seat



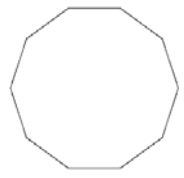
DN 1/4" :



DN 3/8" - 1" :



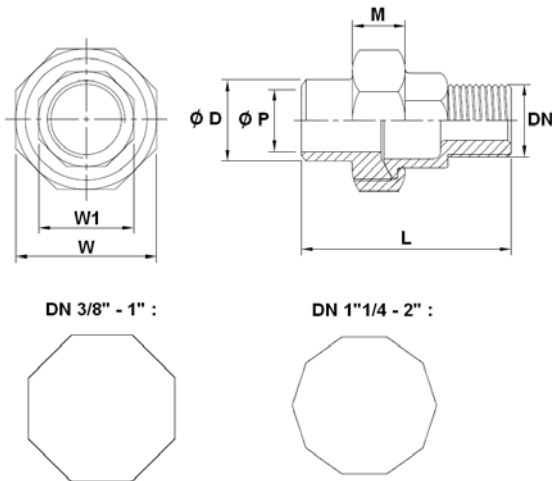
DN 1"1/4 - 2" :



DN	1/4"	3/8"	1/2"	3/4"	1"	1"1/4"	1"1/2"	2"
L	56	57.5	66.5	73.4	81	89.5	89.3	99
L1	21	21	26.1	29.6	32	34.5	34	39
M	12.2	15	15	15	17	20	20	20.8
W	28	34	39.2	46	55	63.5	71	85
W1	17	20	26.5	31	38.4	47.3	53	66
Weig. (Kg)	0.085	0.112	0.175	0.246	0.358	0.502	0.614	0.946

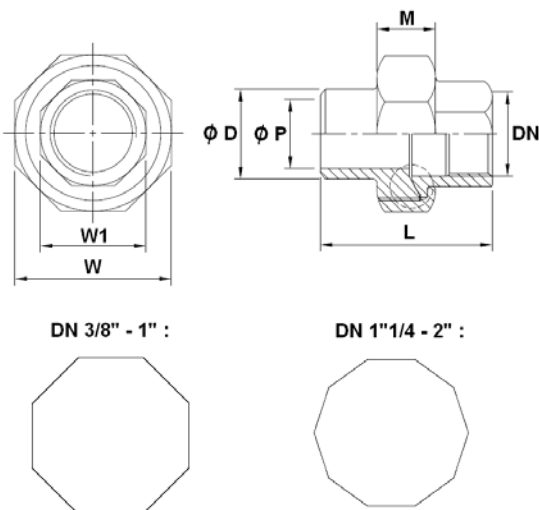
STAINLESS STEEL FITTINGS PN20
SIZE (in mm) :

- **Union Male – But Welding (DN 1/4" – 2") Ref. 2027 - Conical seat**



DN	1/4"	3/8"	1/2"	3/4"	1"	1"1/4	1"1/2	2"
Ø D	13.5	17.2	21.5	27	33.7	42.7	48.5	60.5
Ø P	9.4	12.6	16	21.5	27	35.6	41.5	52.7
L	46.4	47.7	53	60	66	72	73	77.6
M	12.2	15	15	15	17	20	20	20.8
W	28	34	39.2	46	55	63.5	71	85
W1	17.2	20.3	26	30.6	38	47.3	53	66
Weight (Kg)	0.069	0.104	0.153	0.225	0.328	0.432	0.535	0.765

- **Union Female – But Welding (DN 1/4" – 2") Ref. 2028 - Conical seat**

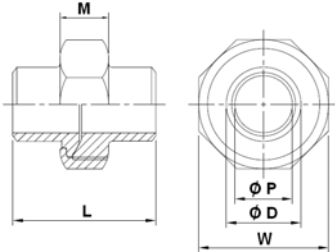


DN	1/4"	3/8"	1/2"	3/4"	1"	1"1/4	1"1/2	2"
Ø D	13.5	17.2	21.5	27	33.7	42.7	48.5	60.5
Ø P	9.4	12.6	16	21.5	27	35.6	41.5	52.7
L	35	38	40	45.7	50	56	57	58.6
M	12.2	15	15	15	17	20	20	20.8
W	28	34	39.2	46	55	63.5	71	85
W1	17.4	20.3	26.5	31	38	47.3	53.3	66.5
Weight (Kg)	0.065	0.113	0.145	0.185	0.290	0.395	0.465	0.675

STAINLESS STEEL FITTINGS PN20

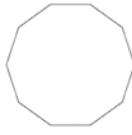
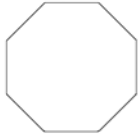
SIZE (in mm) :

- Union B.W. – B.W. (DN 8– DN 50) Ref. 2029 - Conical seat



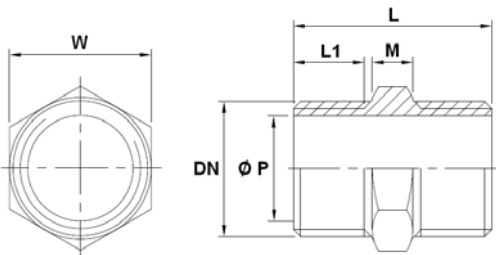
DN 3/8" - 1" :

DN 1"1/4 - 2" :



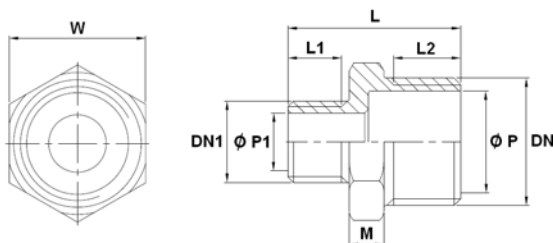
DN	8	10	15	20	25	32	40	50
Ø D	13.5	17.2	21.5	27	33.7	42.7	48.5	60.5
Ø P	9.4	12.6	16	21.5	27	35.6	41.5	52.7
L	34.5	38.5	40	47.5	49.6	54.8	55	57.4
M	12.2	15	15	15	17	20	20	20.8
W	28	34	39.2	46	55	63.5	71	85
Weight (Kg)	0.06	0.107	0.144	0.203	0.310	0.42	0.510	0.765

- Hexagon nipple (DN 1/8"– 2") Ref. 2030



DN	1/8"	1/4"	3/8"	1/2"	3/4"	1"	1"1/4	1"1/2	2"
L	26	30	30	40	40.5	48	49.5	49.5	52.5
L1	9	11	11	14	14	17.5	18	18.5	20
M	5.6	6	6	7.6	8.5	8	9.5	9.5	10.5
Ø P	5.5	8.2	11.8	15.2	21	26.5	35	41	53
W	13	15	18	23	29	35	45	50	62
Weig. (Kg)	0.012	0.019	0.023	0.046	0.062	0.104	0.152	0.169	0.231

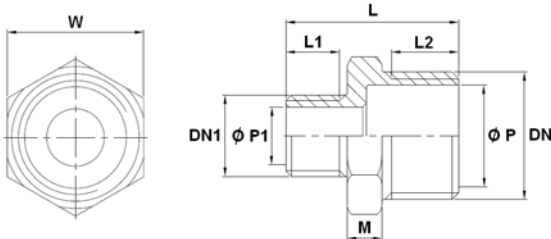
- Reduced nipple male - male (DN 1/8"– 2") Ref. 2031



DN	1/4"	3/8"	1/2"	3/4"	1"	1"1/4	1"1/2	2"
DN1	1/8"	1/4"	3/8"	1/2"	3/4"	1"	1"1/4	1"1/2
L	29	32	36	39	45	50	50.5	52
L1	10	11	12	14	14	17.5	18	18.5
L2	11	12	14	14	17.5	18	18.5	20
M	6	7	7	7	9	10	10.5	11
Ø P	8.2	11.8	15.2	21	27	35	41	51.8
Ø P1	5.5	8.2	11.8	15.2	21	27	35	41
W	15	18	23	29	35	45	50	62
Weight (Kg)	0.016	0.025	0.041	0.057	0.088	0.151	0.184	0.267

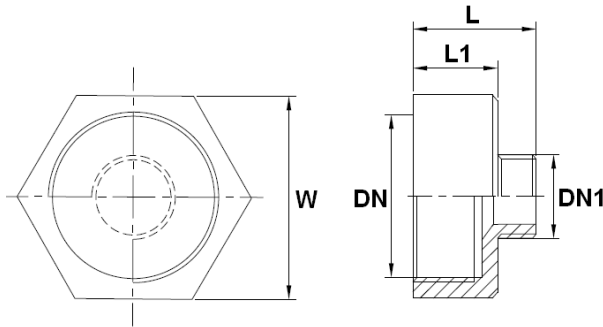
STAINLESS STEEL FITTINGS PN20
SIZE (in mm) :

- Double reduced nipple male - male (DN 1/8" – 2") Ref. 2032



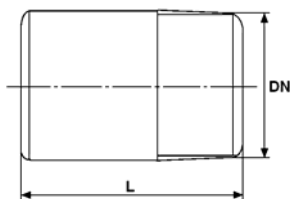
DN	3/8"	1/2"	3/4"	1"	1"1/4	1"1/2	2"
DN1	1/8"	1/4"	3/8"	1/2"	3/4"	1"	1"1/4
L	31	35	36	45	46	50.5	52
L1	10	11	12	14	14	17.5	18
L2	12	14	14	17.5	18	18.5	20
M	7	7	7	9	10	10.5	11
Ø P	11.8	15.2	21	27	35	41	51.8
Ø P1	5.5	8.2	11.8	15.2	21	27	35
W	18	23	29	35	45	50	62
Weight (Kg)	0.022	0.039	0.051	0.093	0.143	0.187	0.281

- Reduced nipple female - male (DN 1/8" – 2") Ref. 2033



DN	1/4"	3/8"	1/2"	3/4"	1"	1"1/4	1"1/2	2"
DN1	1/8"	1/4"	3/8"	1/2"	3/4"	1"	1"1/4	1"1/2
L	27	31	35	38.5	44	47	50	53
L1	16.5	18.5	22	23	26	27	28	30
W	17	21	26	32	38	46	54	63
Weig. (Kg)	0.024	0.039	0.068	0.104	0.127	0.170	0.265	0.290

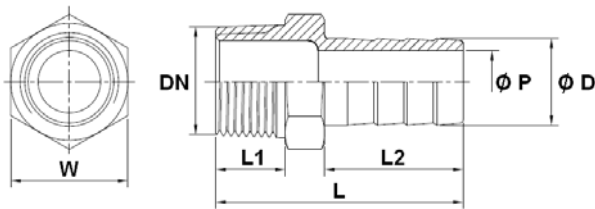
- Welding nipple L=50 mm (DN 1/4" – 2") Ref. 2034



DN	1/4"	3/8"	1/2"	3/4"	1"	1"1/4	1"1/2	2"
L	50	50	50	50	50	50	50	50
Weig. (Kg)	0.025	0.039	0.058	0.079	0.093	0.135	0.16	0.215

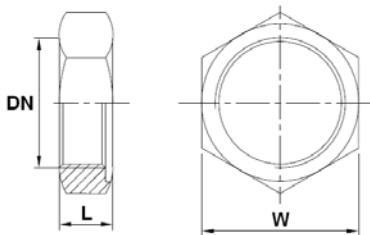
STAINLESS STEEL FITTINGS PN20
SIZE (in mm) :

- Hose nozzle (DN 1/4"– 2") Ref. 2035



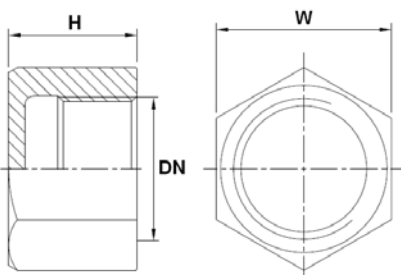
DN	1/4"	3/8"	1/2"	3/4"	1"	1"1/4	1"1/2	2"
L	43	49	56.5	60	69	70	80	88
L1	11.5	13	15	15.5	19	22	22	22.5
L2	25	29.5	33	34	39	37	47.5	53.5
Ø D	8	10	13	20	25	32	40	51.5
Ø P	4	5	7	15	19.5	26.5	33.5	44
W	15	19	23	28	37	45	50	62
Weig. (Kg)	0.020	0.034	0.055	0.084	0.133	0.196	0.286	0.44

- Hexagon nut (DN 1/8"– 2") Ref. 2036



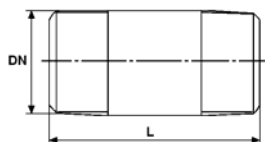
DN	1/8"	1/4"	3/8"	1/2"	3/4"	1"	1"1/4	1"1/2	2"
L	6.3	7	7.5	7.7	9.2	9	11.7	11.8	13.1
W	17.3	19.1	25.3	30.1	34.4	43.2	52	58.1	71.9
Weig. (Kg)	0.008	0.009	0.018	0.024	0.032	0.048	0.086	0.097	0.155

- Female hexagon cap (DN 1/4"– 2") Ref. 2037



DN	1/4"	3/8"	1/2"	3/4"	1"	1"1/4	1"1/2	2"
H	17	17.5	20	20.4	27.1	30	30.3	32.3
W	17.5	21.2	25.5	30.1	37.4	47	53.2	66
Weight (Kg)	0.022	0.031	0.042	0.051	0.095	0.153	0.188	0.304

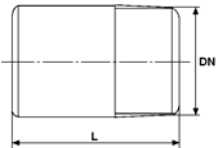
- Barrel nipple L=100 mm (DN 1/4"– 2") Ref. 2038



DN	1/4"	3/8"	1/2"	3/4"	1"	1"1/4	1"1/2	2"
L	100	100	100	100	100	100	100	100
Weight (Kg)	0.051	0.063	0.105	0.127	0.185	0.229	0.262	0.39

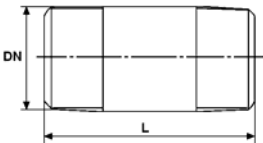
STAINLESS STEEL FITTINGS PN20
SIZE (in mm) :

- Standard welding nipple (DN 1/4" – 4") Ref. 2039



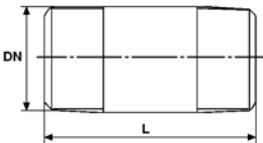
DN	1/4"	3/8"	1/2"	3/4"	1"	1"1/4	1"1/2	2"	2"1/2	3"	4"
L	22	23	27	33	35	36	41	46	55	70	80
Weig. (Kg)	0.010	0.013	0.025	0.037	0.061	0.074	0.106	0.160	0.256	0.461	0.745

- Standard barrel nipple (DN 1/4" – 4") Ref. 2040



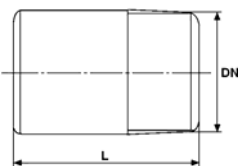
DN	1/4"	3/8"	1/2"	3/4"	1"	1"1/4	1"1/2	2"	2"1/2	3"	4"
L	40	40	60	60	60	80	80	100	100	120	120
Weig. (Kg)	0.019	0.022	0.058	0.066	0.1	0.178	0.193	0.390	0.438	0.753	1.043

- Barrel nipple L=200 mm (DN 1/4" – 2") Ref. 2041



DN	1/4"	3/8"	1/2"	3/4"	1"	1"1/4	1"1/2	2"
L	200	200	200	200	200	200	200	200
Weight (Kg)	0.102	0.126	0.210	0.254	0.370	0.458	0.524	0.780

- Welding nipple L=100 mm (DN 1/4" – 2") Ref. 2042



DN	1/4"	3/8"	1/2"	3/4"	1"	1"1/4	1"1/2	2"
L	100	100	100	100	100	100	100	100
Weight (Kg)	0.050	0.078	0.116	0.158	0.186	0.270	0.32	0.430

STAINLESS STEEL FITTINGS PN20

STANDARDS :

- Fabrication according to ISO 9001 : 2008
- DIRECTIVE 97/23/CE : Products excluded from directive (Article 1,§3.2)
- Male conical BSP threaded according to ISO 7/1 R for Ref. 2010, 2021, 2022, 2023, 2024, 2026, 2027, 2030, 2031, 2032, 2033, 2034, 2035, 2038, 2039, 2040, 2041, 2042 and 2062
- Female cylindrical BSP threaded according to ISO 228-1 for Ref. 2015 and 2017
- Female cylindrical BSP threaded according to ISO 7/1 Rp for Ref. 2001, 2003, 2010, 2013, 2014, 2021, 2024, 2025, 2026, 2028, 2033, 2036 and 2037

ADVICE : Our opinion and our advice are not guaranteed and SFERACO shall not be liable for the consequences of damages.
The customer must check the right choice of the products with the real service conditions.