

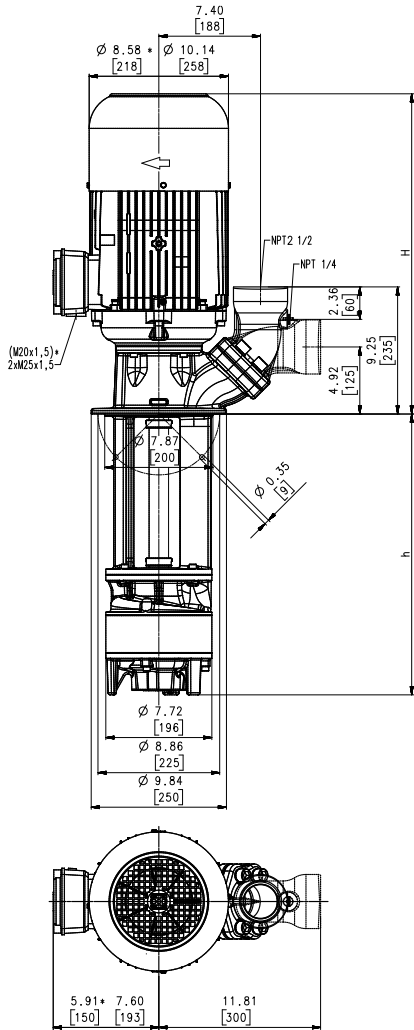
Quick Suctioning Immersion Pumps

SZG701...1002



Axial/open impellers

SZG701...1002



*) Dimensions for SZG701, 1001, 1101

Type	Flow at head	Height	Depth of im- mersion		Weight		Power HP kW	Voltage 3~ V	Fre- quen- cy Hz	Current AMPS	Speed RPM
	GPM /Feet l/min /m	H inch mm	h inch	h mm	Lbs	kg					
SZG701S220	75/54	19.8	8.66	220	145.5	66	5.1	230	60	12.8	3520
	300/15	503					3.8	460	60	6.4	3520
	320		12.60	320	152.1	69					
	450		17.72	450	161.0	73					
	570		22.44	570	170	77					
	770		30.31	770	196	89					
1000		39.37	1000	209	95						
SZG1001S220	125/52	21.0	8.66	220	161.0	73	7.7	230	60	19.0	3520
	500/15	533					5.75	460	60	9.5	3520
	320		12.60	320	168	76					
	450		17.72	450	176	80					
	570		22.44	570	185	84					
	770		30.31	770	212	96					
1000		39.37	1000	225	102						
SZG1101S220	100/70	21.0	8.50	216	158.8	72	7.7	230	60	19.0	3520
	400/21	533					5.75	460	60	9.5	3520
	320		12.44	316	165	75					
	450		17.56	446	174	79					
	570		22.28	566	183	83					
	770		30.16	766	209	95					
1000		39.21	996	223	101						
SZG702S290	75/107	24.1	11.42	290	247	112	11.5	230	60	27.8	3550
	300/31	612					8.6	460	60	13.9	3550
	390		15.35	390	256	116					
	520		20.47	520	262	119					
	640		25.20	640	269	122					
	840		33.07	840	311	141					
1070		42.13	1070	324	147						
SZG1002S290	125/104	24.1	11.42	290	262	119	13.8	230	60	31.6	3550
	500/30	612					10.3	460	60	15.8	3550
	390		15.35	390	269	122					
	520		20.47	520	278	126					
	640		25.20	640	287	130					
	840		33.07	840	313	142					
1070		42.13	1070	329	149						



Quick Suctioning Immersion Pumps

of **series SZG** are equipped with the patented "BRINKMANN's Suction De-aeration System" and are excellently suited for pumping **fluids** (grinding oils) **with very high air entrainment** as they occur in high-speed grinding.

The quick suctioning immersion pumps reach stable working conditions as soon as the liquid level reaches the suction inlet.

The SZG pumps are equipped with the user-friendly 45 degree **flange** connection which allows for either vertical or horizontal pipe connection and the connection of a pressure gauge.

Applications

- Types of fluid
 - grinding oils
 - cooling/cutting oils
 - coolants
- Kinematic viscosity
 - ...200 SSU (...45 mm²/s)
- Pumping temperature
 - 30...175 °F (0...80 °C)

Construction

Pump body	cast iron
Cover	cast iron
Impeller axial	cast steel
Impeller radial	cast steel
Shaft	steel

