

Immersion Pumps

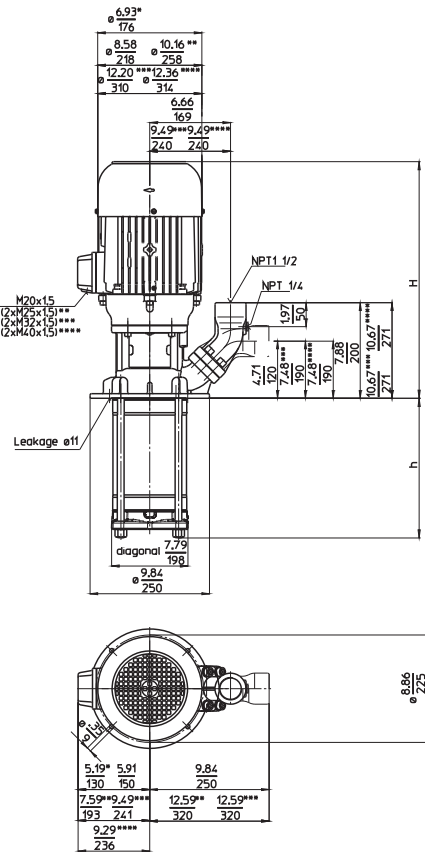
(S)TH14

Closed impellers

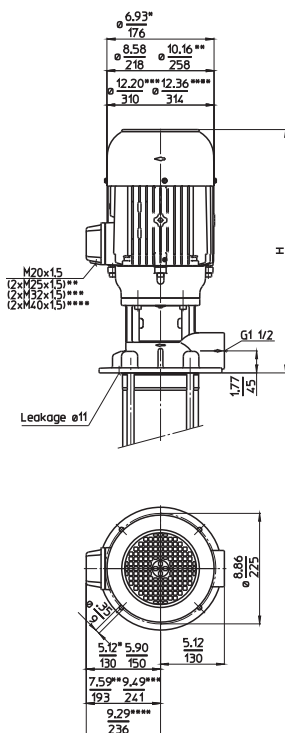


60 Hz

STH1402...1412



TH1402...1412



Type	Flow at head	Height	Depth of im- mersion		Weight		Power HP kW	Voltage 3~ V	Fre- quen- cy Hz	Current Speed	
	GPM /Feet /min /m	H inch mm	h inch	h mm	Lbs	kg				AMPS	RPM
(S)TH1402S180	62.5/115 250/38	19.4 492	7.17	182	103.6	47	3.9 2.94	230 460	60 60	10.2 5.1	3480 3480
(S)TH1403S280	62.5/180 250/58	20.9 531	10.94	278	127.9	58	6.1 4.55	230 460	60 60	15.8 7.9	3520 3520
(S)TH1404S280	62.5/240 250/77	22.1 561	10.94	278	143.3	65	8.4 6.3	230 460	60 60	20.8 10.4	3510 3510
(S)TH1405S380	62.5/305 250/96	25.2 640	14.72	374	207	94	11.5 8.6	230 460	60 60	27.8 13.9	3550 3550
(S)TH1406S380	62.5/370 250/111				209	95					
(S)TH1407S470	62.5/430 250/128	25.2 640	18.50	470	238	108	13.8 10.3	230 460	60 60	31.6 15.8	3550 3550
(S)TH1408S470	62.5/490 250/147	25.5 647	18.50	470	271	123	16.9 12.6	230 460	60 60	39.2 19.6	3560 3560
(S)TH1409S570	62.5/560 250/165	25.5 647	22.28	566	280	127	20.1 15.0	230 460	60 60	48.2 24.1	3560 3560
(S)TH1410S570	62.5/620 250/184				282	128					
(S)TH1411S660	62.5/685 250/203	39.8 1012	26.06	662	346	157	25 18.5	460	60	28	3560
(S)TH1412S660	62.5/730 250/222				353	160					

Dimensions in Inches / mm
 *) Dimensions (S)TH1402
 **) Dimensions (S)TH1405...1407
 ***) Dimensions (S)TH1408...410
 ****) Dimensions (S)TH1411...1412

Immersion Pumps

series TH and FH use closed impellers in order to minimize power consumption and to optimize hydraulic pump efficiencies.

In addition, the TH series offers high pressures at short immersion depths. Inline pumps of the series FH can be used as boosting pumps if provided with positive inlet pressure. This inlet pressure can be provided by the central coolant supply or a feed pump. In such a setup, pumps of the series FH can raise the incoming pressure by up to 375 PSI (26 bar).

Longer pump lengths and threaded inlets are available upon request.

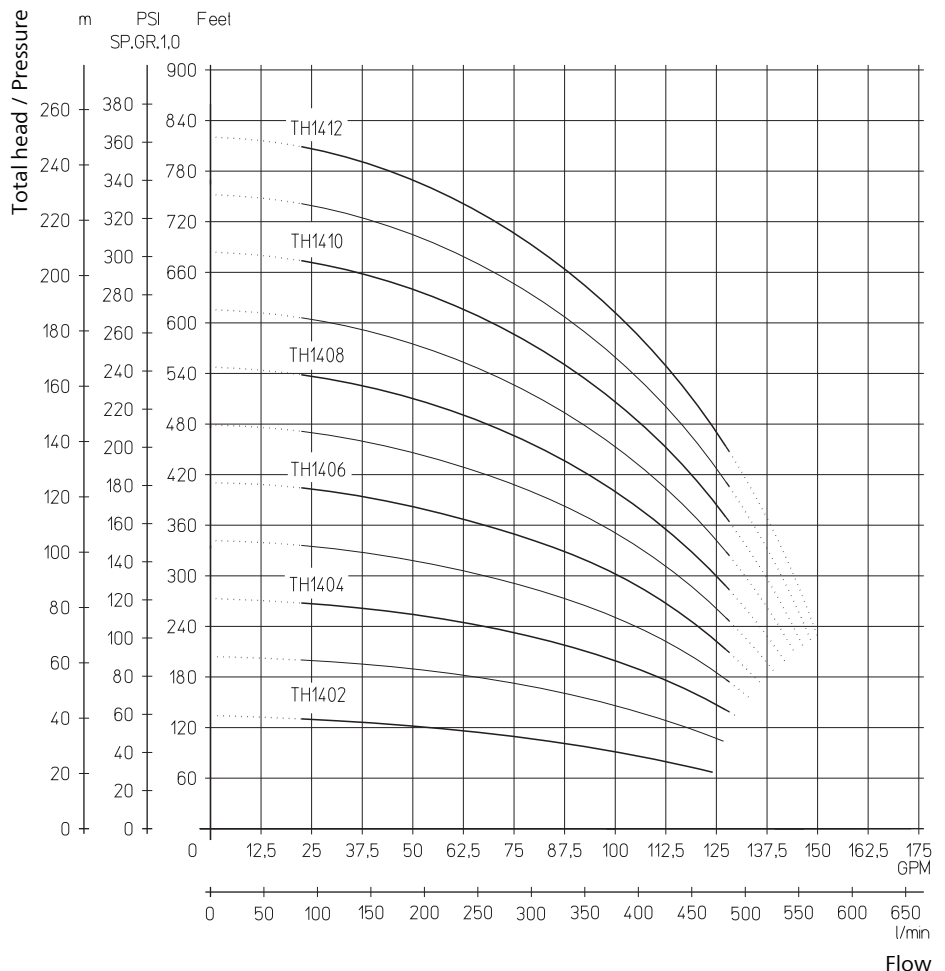
Please see medium pressure pumps features in the Technical Information section of this catalog or call 248-926-9400 for de-

Applications

- Types of fluid
 - Industry water
 - coolants
 - cooling/cutting oils
- Kinematic viscosity
 - ...115 SSU (...25 mm²/s)
- Pumping temperature
 - 30...175 °F (0...80 °C)

Construction

Pump body	cast iron
Cover	cast iron
Impellers	CrNi-steel
Shaft	CrNi-steel
Diffusers	CrNi-steel
Mechanical seal	SiC
O-rings	Viton®
Optional:	
Pump body	CrNi-steel
Cover	CrNi-steel
Threaded inlet	G 2
Noise level (Motor only; Tolerance +3 dBA)	
(S)TH1402	66 dBA
(S)TH1403...(S)TH1404	74 dBA
(S)TH1405...(S)TH1407	77 dBA
(S)TH1408...(S)TH1410	79 dBA
(S)TH1411...(S)TH1412	81 dBA



Available Extended imm. depths:
760 mm (29.92"), 900 mm (35.43")