

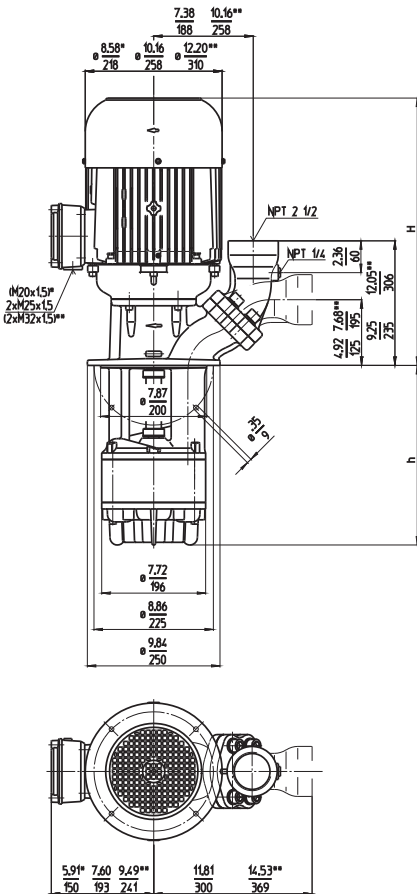
# Quick Suctioning Immersion Pumps

## SGL1101...1103

Axial/semi-open impellers



### SGL1101, 1102 SGL1103



Type	Flow at head	Height	Depth of im- mersion		Weight		Power 3~ HP kW	Voltage V	Fre- quen- cy Hz	Current AMPS	Speed RPM
	GPM /Feet l/min /m	H inch mm	h inch	h mm	Lbs	kg					
<b>SGL1101S230</b>	250/32	21.0	9.06	230	152.1	69	7.7	230	60	19.0	3520
	950/10	533					5.75	460	60	9.5	3520
	330		12.99	330	158.8	72					
	460		18.11	460	168	76					
	580		22.83	580	179	81					
	780		30.71	780	201	91					
1010		39.76	1010	216	98						
<b>SGL1102S310</b>	250/65	24.1	12.20	310	238	108	13.8	230	60	31.6	3550
	950/19	612					10.3	460	60	15.8	3550
	410		16.14	410	243	110					
	540		21.26	540	249	113					
	660		25.98	660	260	118					
	860		33.86	860	287	130					
1090		42.91	1090	304	138						
<b>SGL1103S390</b>	250/90	24.4	15.35	390	315	143	20.1	230	60	48.2	3560
	950/27	620					15.0	460	60	24.1	3560
	490		19.29	490	324	147					
	620		24.41	620	333	151					
	740		29.13	740	342	155					
	940		37.01	940	368	167					

Discharge port with NPT 2 inches available upon request.

Dimensions in Inches / mm

\*) Dimensions SGL1101

\*\*\*) Dimensions SGL1103

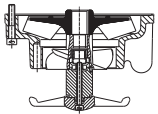


**Quick Suctioning Immersion Pumps**

of **series SGL** are equipped with the patented "BRINKMANN's Suction De-aeration System" and are excellently suited for pumping **extremely air entrained fluids** (grinding oils) as they occur in high-speed grinding.

The quick suctioning immersion pumps reach stable working conditions as soon as the liquid level reaches the suction inlet.

The SGL pumps are equipped with the user-friendly 45 degree **flange** connection which allows for either vertical or horizontal pipe connection and the connection of a pressure gauge.



The pump SGL1101 is available (upon request) with an additional agitator at the pump suction for breaking up and separating large bundles of chips or birds nests.

**Applications**

- Types of fluid
  - coolants
  - cooling/cutting oils
  - grinding oils
- Kinematic viscosity
  - ...200 SSU (...45 mm<sup>2</sup>/s)
- Pumping temperature
  - 30...175 °F (0...80 °C)

**Construction**

Pump body	cast iron
Cover	cast iron
Impeller axial	cast steel
Impeller radial	cast steel
Shaft	steel

