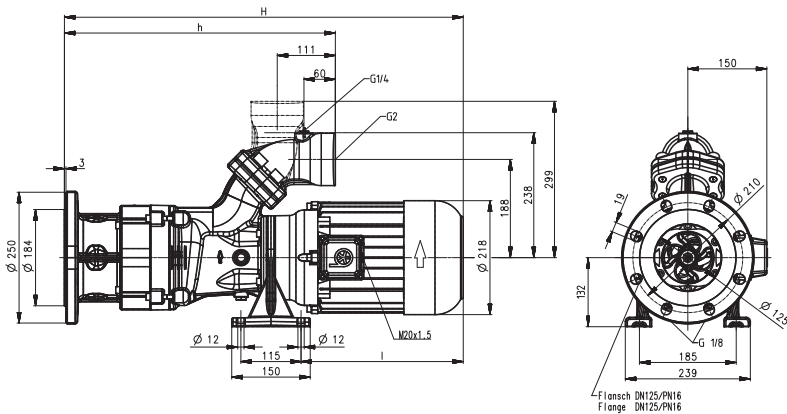


Horizontal End-Suction Pumps

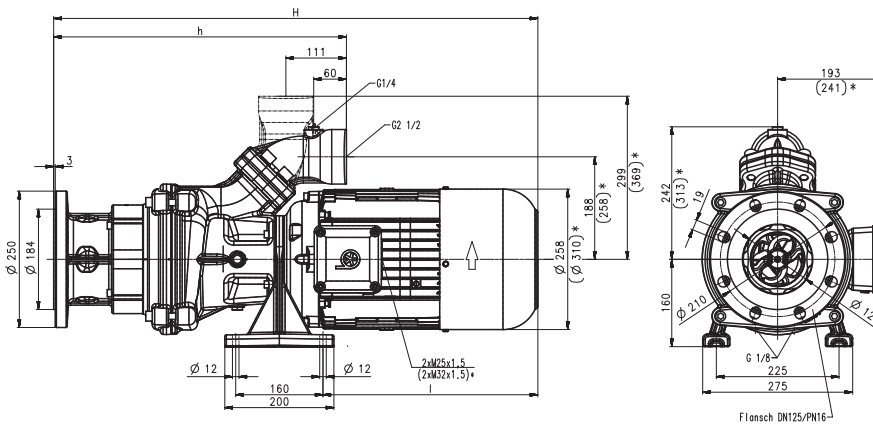
SBC820...1820

Axial/semi-open impellers

SBC820...1120



SBC1520...1820



*) Dimensions for SBC1820



Type	Vol. del. at manom. del. head l/min / m	Dimensions		Length l mm	Weight kg	Power kW	Voltage 3 ~ V	Fre- quen- cy Hz	Current A	Speed 1/min
		H mm	h mm							
SBC820	400/10	780	518	328	85	4.0	220-240 380-415	50 50	14.50 8.35	2920 2920
						4.55	460	60	7.9	3520
SBC1120	600/10	810	518	358	89	5.5	220-240 380-415	50 50	18.9 10.9	2915 2915
						6.3	460	60	10.4	3510
SBC1520	800/16	906	537	414	132	7.5	380-415	50	14.3	2950
						8.6	460	60	13.7	3550
SBC1820	900/17.5	915	608	422	163	11.0	380-415	50	20.1	2960
						12.6	460	60	19.5	3560

Horizontal End-Suction Pumps

are centrifugal inline pumps with a compact design where the impeller is mounted onto the extended motor shaft. These pumps are not self-priming and must be gravity fed. All pumps are equipped with double mechanical seal. This pump series is designed for horizontal installations next to a tank and are capable of cutting aluminium chips and similar materials and pumping of these materials along with the coolant fluid. An agitator located at the pump suction helps to break up and separate any large bundles of chips or birds nests which reach the pump suction.

The specially made cutting unit (> 60 HRC) is cutting chips and the above located semi-open impeller allows with its large clearances to pump the particles along with the coolant fluid from the machine back to the filter. The SBC pumps are capable of handling chip to coolant ratios of up to 1.5% by weight.

The SBC pumps are equipped with the user-friendly 45 degree **flange** connection which allows for either vertical or horizontal pipe connection and the connection of a pressure gauge with G 1/4.

For more information see lifting pumps features SFC/SBC within the technical information section.



Applications

Types of fluid
coolants
cooling/cutting oils on request
Max. chip to coolant ratio by weight:
1.5 %
Chip material:
Aluminium
Chip geometry:
Chip bundles to max. Ø 100 mm
Kinematic viscosity
...45 mm²/s (45 cSt)
Pumping temperature
0...80° C

Construction

Pump body	cast iron
Cover	cast iron
Impeller axial	cast steel
Impeller radial	cast steel
Cutting unit	Hardened (>60 HRC)
Agitator	Highly ductile steel
Shaft	steel
Mechanical seal	SiC
Noise level	
SBC820...SBC1120	71 dBA
SBC1520...SBC1820	74 dBA

