

# Horizontal End-Suction Pumps

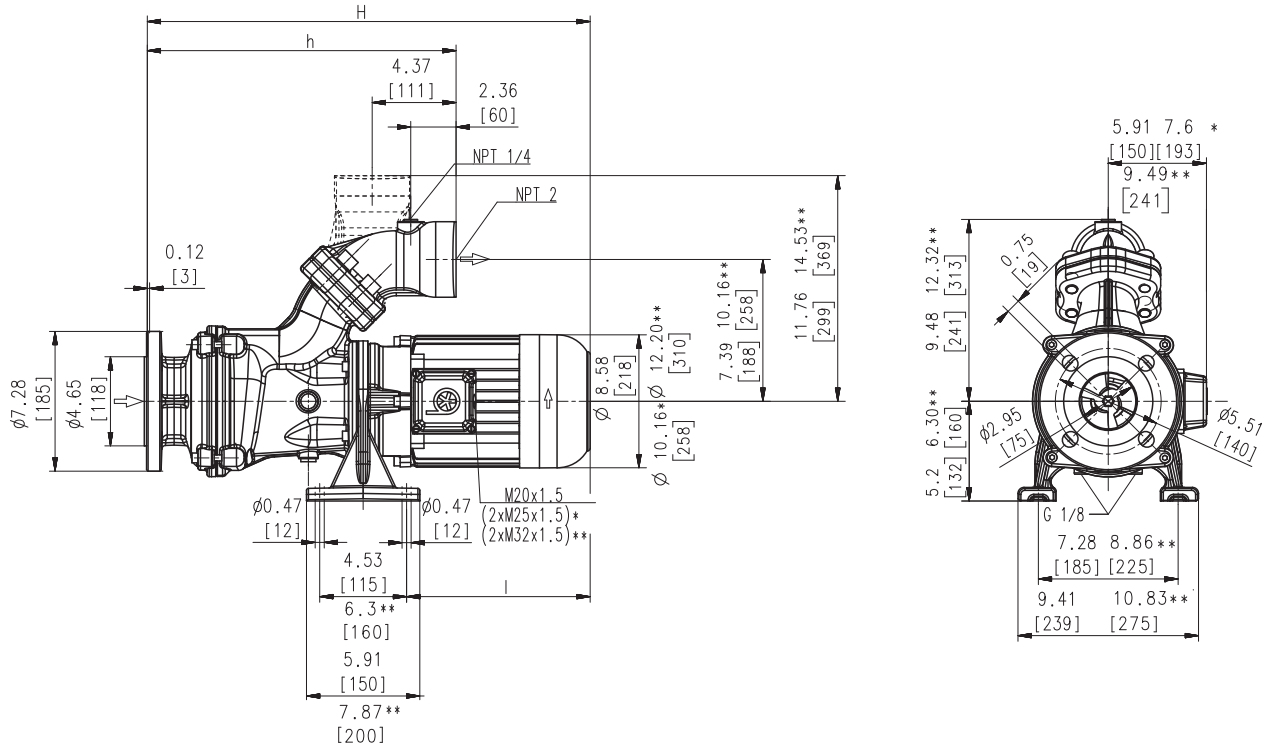
## SBA1301S...1303S

Axial/semi-open impellers



60 Hz

### SBA1301S...1303S



Dimensions in Inches / mm,  
 \*) Dimensions SBA1302S  
 \*\*) Dimensions SBA1303S

Type	Flow at head	Dimensions		Length		Weight		Power HP kW	Voltage 3~ V	Fre- quen- cy Hz	Current AMPS	Speed RPM		
	GPM /Feet l/min /m	H inch	H mm	h inch	h mm	l Inch	l mm						Lbs	kg
<b>SBA1301S</b>	225/44	27.8	705	16.3	413	14.1	358	161.0	73	7.7	230	60	19.0	3520
	900/12									5.75	460	60	9.5	3520
<b>SBA1302S</b>	225/90	34.0	863	19.4	492	17.2	437	258	117	11.5	230	60	27.8	3550
	900/25									8.6	460	60	13.9	3550
<b>SBA1303S</b>	225/135	37.4	951	25.3	643	16.6	422	313	142	16.9	230	60	39.2	3560
	900/39									12.6	460	60	19.6	3560



**Horizontal End-Suction Pumps**

are centrifugal inline pumps with a compact design where the impeller is mounted onto the extended motor shaft. These pumps are not self-priming and must be gravity fed. All pumps are equipped with a single mechanical seal. Upon request a second mechanical seal is available to allow for dry-running (-GD). This pump series is designed for horizontal installations next to a tank and for pumping **air entrained coolant** fluids, such as **water-soluble coolants or cutting oils**, as they occur in **high speed turning, milling or grinding applications**. The SBA pumps are equipped with the user-friendly 45 degree **flange** connection which allows for either vertical or horizontal pipe connection and the connection of a pressure gauge with NPT 1/4. For more information see mechanical features within the technical information section.

**Applications**

- Types of fluid
  - coolants
  - cooling/cutting oils
- Kinematic viscosity
  - ...200 SSU (...45 mm<sup>2</sup>/s)
- Pumping temperature
  - 30...175 °F (0...80 °C)

**Construction**

Pump body	cast iron
Cover	cast iron
Impeller axial	cast steel
Impeller radial	cast steel
Shaft	steel
Mechanical seal	SiC
Noise level (Motor only; Tolerance +3 dBA)	
SBA1301S	73 dBA
SBA1302S	78 dBA
SBA1303S	79 dBA

