

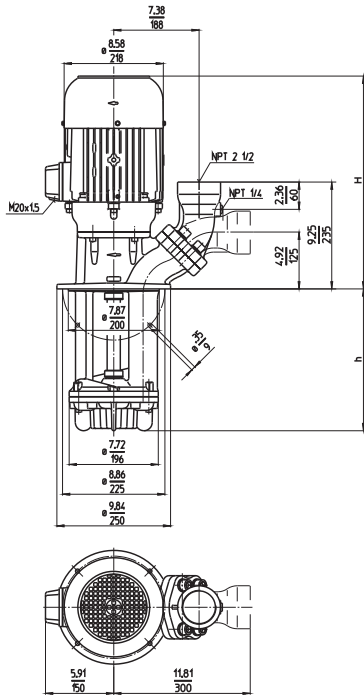
Quick Suctioning Immersion Pumps

SAL630...1130

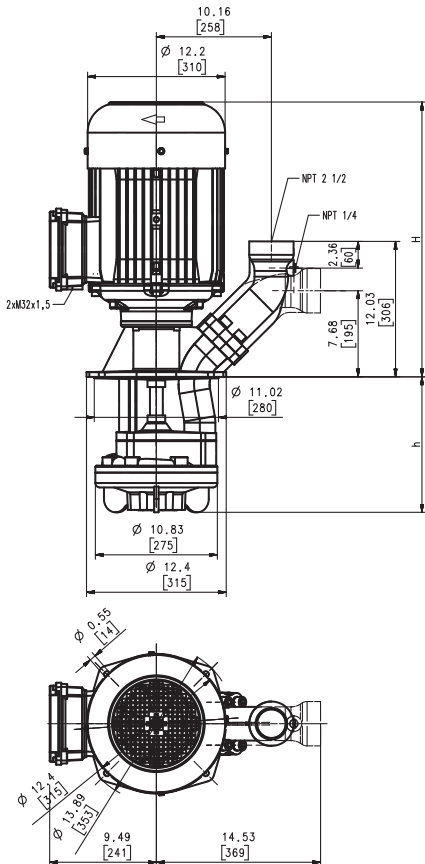
Axial/semi-open impellers



SAL630, 830



SAL1130



Type	Flow at head	Height	Depth of immersion		Weight		Power	Voltage	Frequency	Current	Speed
	GPM /Feet l/min /m	H inch mm	h inch	h mm	Lbs	kg	HP kW	V	Hz	AMPS	RPM
SAL630S220	150/75	21.0	8.66	220	149.9	68	7.7	230	60	19.0	3520
	600/22	533					5.75	460	60	9.5	3520
	320		12.60	320	156.6	71					
	450		17.72	450	165	75					
	570		22.44	570	176	80					
	770		30.31	770	198	90					
1000		39.37	1000	214	97						
SAL830S230	200/72	21.0	9.06	230	154.4	70	7.7	230	60	19.0	3520
	800/22	533					5.75	460	60	9.5	3520
	330		12.99	330	161.0	73					
	460		18.11	460	170	77					
	580		22.83	580	181	82					
	780		30.71	780	203	92					
1010		39.76	1010	218	99						
1130		18.4	44.49	1130	225	102					
SAL1130S310	400/75	24.4	12.20	310	326	148	16.9	230	60	39.2	3560
	1400/24	620					12.6	460	60	19.6	3560
	440		17.32	440	331	150					
	560		22.05	560	346	157					
	810		31.89	810	384	174					
1060		41.73	1060	390	177						

Discharge port with NPT 2 inches available upon request.
Dimensions in Inches / mm



Quick Suctioning Immersion Pumps

equipped with the patented "BRINK-MANN's Suction De-aeration System" are excellently suited for pumping **extremely air entrained fluids** (emulsions resp. cooling/cutting oils) as they occur in heavy cutting when turning, milling or grinding. The quick suctioning immersion pumps reach stable working conditions as soon as the liquid level reaches the suction inlet.

The SAL pumps are equipped with the user-friendly 45 degree **flange** connection which allows for either vertical or horizontal pipe connection and the connection of a pressure gauge.

Applications

- Types of fluid
 - coolants
 - cooling/cutting oils
- Kinematic viscosity
 - ...200 SSU (...45 mm²/s)
- Pumping temperature
 - 30...175 °F (0...80 °C)

Construction

Pump body	cast iron
Cover	cast iron
Impeller axial	cast steel
Impeller radial	cast steel
Shaft	steel

