

BALL VALVE ADLER 2 PIECES - ASA150 - FIRE SAFE Ref. 766/767

Ref. : DS 766

Rev. : 4

Date : 07/10

Page 1/2



Valves and fittings

90 rue du ruisseau 38297 ST QUENTIN FALLAVIER
Tel:(33)04.74.94.15.90 Fax:(33)04.74.95.62.08
E.mail : sferaco@sferaco.fr

SPECIFICATIONS :

- . Full bore
- . Anti-blow out stem
- . ISO 5211 mounting pad
- . Special gland pack with "Belleville" washer
- . Anti-static device
- . Double tightness body / end
- . Fire safe according to BS 6755

USE :

- . For all common fluids
- . Max Temperature Ts : 180°C
- . Max Pressure Ps : 20 bars
- . Vacuum : 10⁻² torr

RANGE :

- . Carbon steel flanged ASA150 **Ref. 766** DN15 to DN200
- . Stainless steel flanged ASA150 **Ref. 767** DN15 to DN200

MATERIALS :

Item	DESIGNATION	MATERIALS 766	MATERIALS 767
1	Body	Carbon steel A105	SS 316/A351 CF8M
2	End	Carbon steel A105	SS 316/A351 CF8M
6	Ball	SS 304	SS 316/A351 CF8M
8	Stem	SS 304	SS 316
5	Seat	PTFE	PTFE
10	Packing	PTFE	PTFE
3	O-ring	Viton	Viton
4	Gasket	PTFE	PTFE
7	Anti-static device	SS 304	SS 316
12	"Belleville" Washer	Zinc plated steel	Zinc plated steel
14+16	Nut	Zinc plated steel	Zinc plated steel
15	Handle	Carbon steel A105	Carbon steel A105

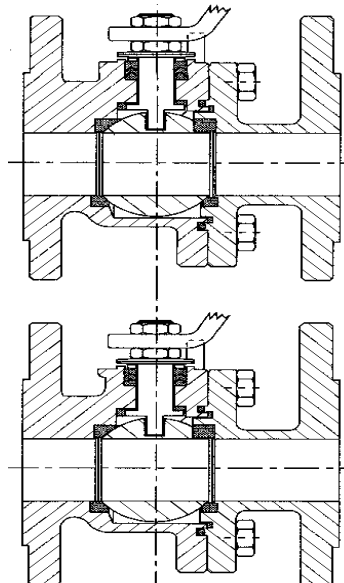


STANDARDS :

- . DIRECTIVE 97/23/CE : CE 0038
- . Risk category III module H
- . Length according to ISO 5752 S

OPTIONS :

- . Locking device
- . Stem extension 100mm
- . Stem extension on request
- . Handwheel 1/4" to 1" 1/4
- . Cavity filler in PTFE
- . Heating jacket
- . Seat PTFE reinforced carbon
- . Dry cleaned oxygen
- . Manual gear box
- . ATEX Group 2 Category 2G/2D Zone 1&21 , Zone 2 & 22



Ref. 767
DN15 to DN100 : SS 316

DN 125 to DN200 : A351 CF8M

BALL VALVE ADLER

2 PIECES - ASA150 - FIRE SAFE

Ref. 766/767

Ref. : DS 766

Rev. : 4

Date : 07/10

Page 2/2

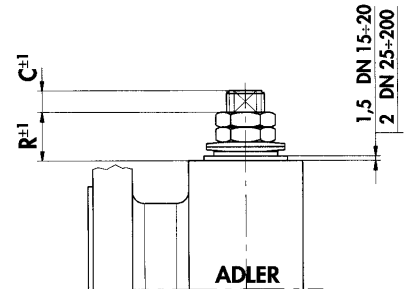
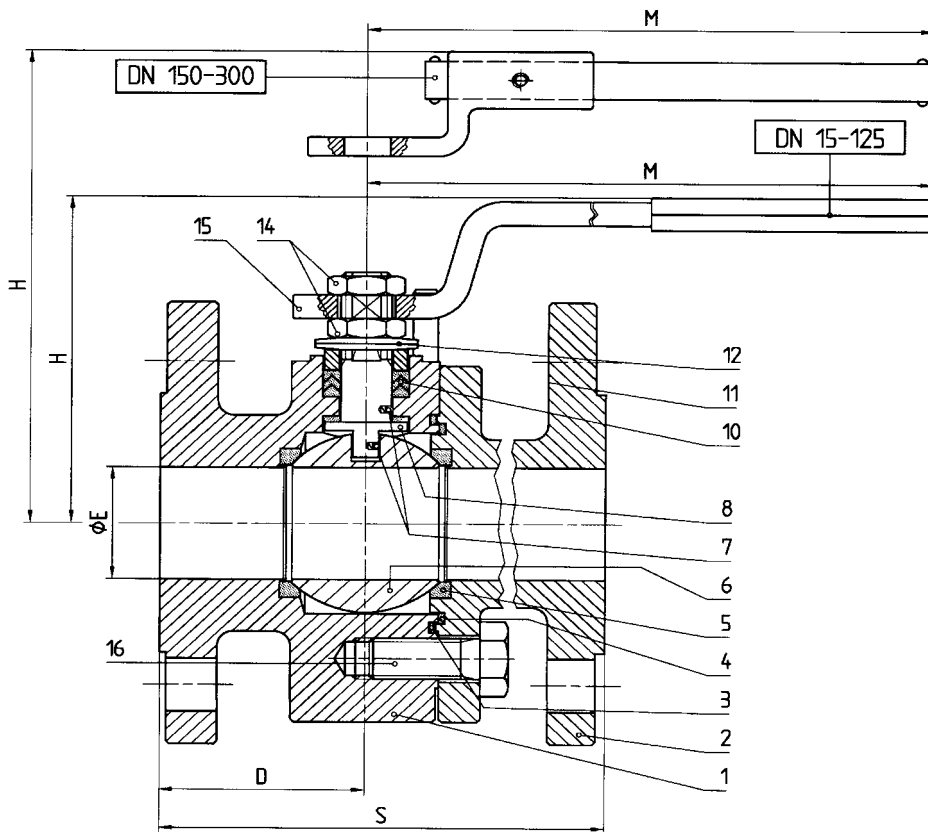
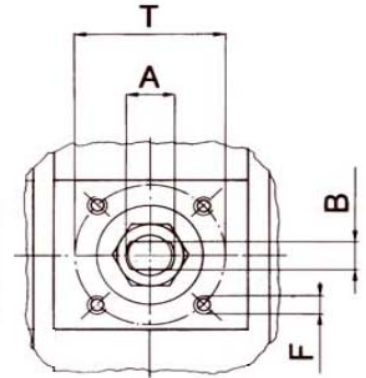


Vavles and fittings

90 rue du ruisseau 38297 ST QUENTIN FALLAVIER
 Tel:(33)04.74.94.15.90 Fax:(33)04.74.95.62.08
 E.mail : sferaco@sferaco.fr

SIZE :

	Ø	15	20	25	32	40	50	65	80	100	125	150	200
Ref. 766/767	E	15	19	25	30	38	51	64	76	101	118	152	203
	S	108	118,5	126	140	165	178	190	203	229	254	267	419
	H	86	88	113	119	110	120	144	152	174	188	256	294
	C	7	7	10	10	10	10	12	17	17	17	19	20
	R	8	8	17	17	20	20	23	23	26	26	34	36
	D	46	48,5	49	52	58	76	72	75	77	100	117	155
	M	145	145	185	185	280	280	370	370	470	650	750	900
	ISO	F03	F03	F03	F03	F05	F05	F07	F07	F07	F10	F12	F14
	A x B	10x6	10x6	12x8	12x8	16x10	16x10	22x14	22x14	30x18	30x18	42x28	48x32
	F	M5	M5	M5	M5	M6	M6	M8	M8	M8	M10	M12	M16
T	36	36	36	36	50	50	70	70	70	102	125	140	
Weig.	2,7	3,6	4,5	6,2	9	14,3	21,5	25	34	56	91	159	



ADVICE : Our opinion and our advice are not guaranteed and SFERACO shall not be liable for the consequences of damages. The customer must check the right choice of the products with the real service conditions.