

507 BALL VALVE WITH ADA PNEUMATIC ACTUATOR

MAIN CHARACTERISTIC

The 507 cast iron flanged ball valve is dedicated to the automatic shut-off of low pressure and non-dangereous fluids' lines up to 16 bar. With a full bore split-body construction type, the 507 valve is CE PED 97/23 approved and ATEX certified. The face to face dimension is standardized following EN 558-1 serial 27. The ISO 5211 ISO pad enables the mounting of standardized actuators. The actuation is available in both double effect and spring return types with numerous options.

This valve is not recommended for compressed air and steam applications.

AVAILABLE MODELS

Grey cast iron body

Sizes DN 15 à DN 200

Connection with flanges PN16 RF

Short pattern EN 558-1 serial 27

CLASSIFICATION FOLLOWING PED

Sizes < DN 25: not subjected to PED acc. to A3 §3

Sizes DN32 to 200: category II: CE 0062 homologation

LIMITS OF USE

PS	TS
16 bar @ 20°C	-10°C/+200°C

OPTIONS

Declutchable gear box

Oversized actuator

Limits switches box

NAMUR pilot valve

ACTUATOR TYPE ADA

See our technical data sheet FT1510 on page 5.



MOTORIZATION WITH ADA ACTUATOR

The actuators are sized for following operating conditions :

- 6 bar compressed air supply,

- max. pressure differential up/downstream : 10 bar.

Size	Double effect	Spring return
15	ADA 20	ASR 20
20	ADA 20	ASR 20
25	ADA 20	ASR 40
32	ADA 20	ASR 40
40	ADA 40	ASR 80
50	ADA 80	ASR 130
65	ADA 80	ASR 130
80	ADA 130	ASR 300
100	ADA 200	ASR 500
125	ADA 300	ASR 850
150	ADA 300	ASR 1200
200	ADA 850	-

For any other operating condition, please consult.

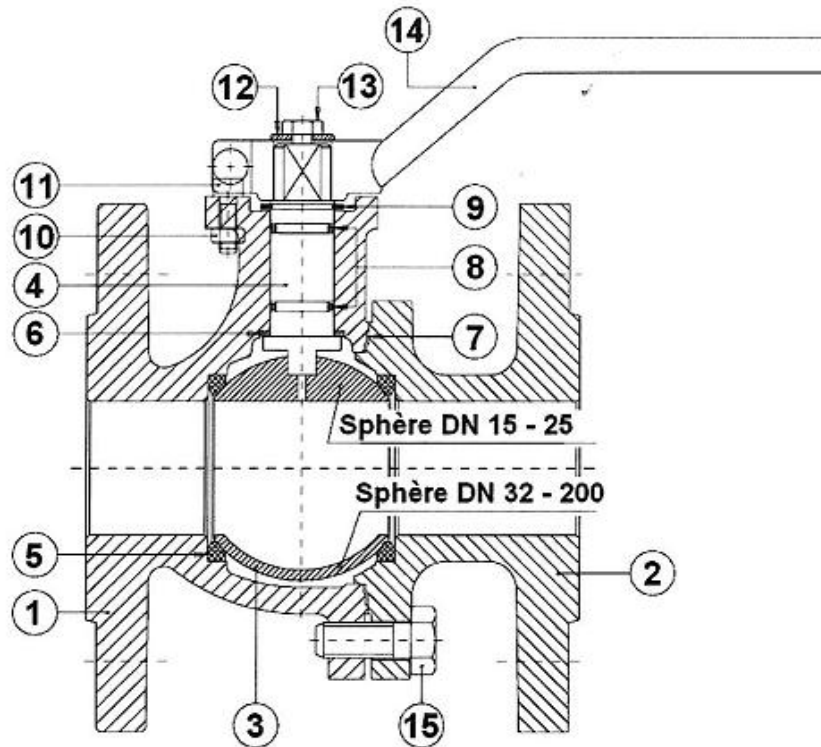
The linking parts between the valve and the actuator are available in stainless steel, with design according to EN 15081 standard.

Modifications reserved

507 BALL VALVE WITH ADA PNEUMATIC ACTUATOR

STANDARDS OF CONSTRUCTION

	Standard		Standard
Construction	DIN 3357	Flanges	EN 1092-1 PN16 RF
Conception	DIN 3840	Face to face	EN 558-1 série 27
Final test	EN 12266-1	Motorisation	ISO 5211
ATEX	II 2 G/D Tx	ATEX areas	1,21, 2 et 22

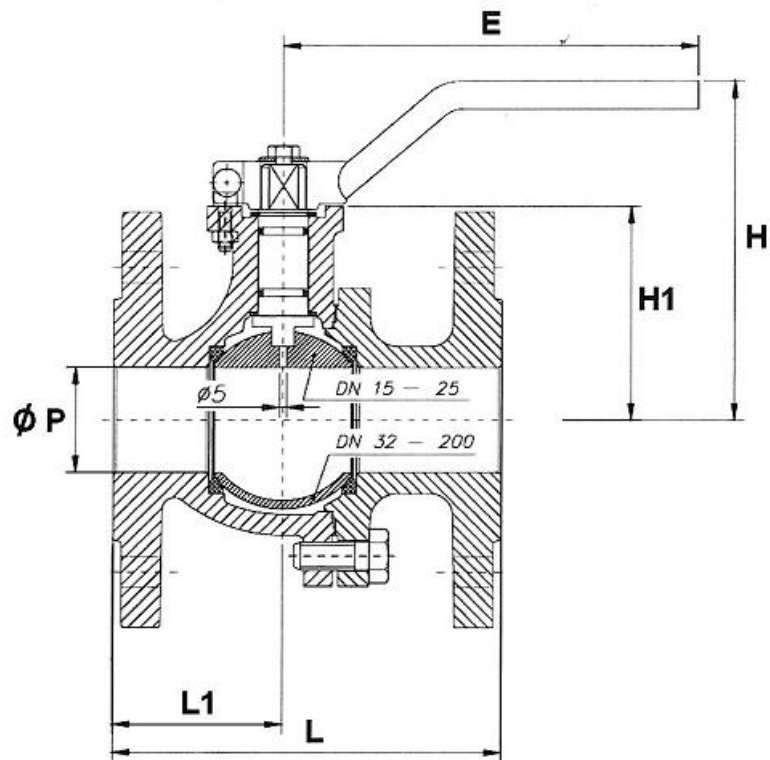


CONSTRUCTION

Item	Part	Material	Item	Part	Material
1	Body	EN GJL-250	8	O-ring	FKM
2	Flanges	EN GJL-250	9	Ring	DIN 471 steel
3	Ball DN 15-25	SS 303	10	Nut	DI N 934-8 steel
3	Ball DN 32-200	SS 304	11	Screw	DIN 912- 8.8 steel
4	Stem	SS 304	12	Lever ring	Zinc plated steel
5	Seats	PTFE	13	Screw	DIN 935 5.6
6	Ring	PTFE	14	Lever	Steel
7	Body gasket	PTFE	15	Bolt	DIN 933 5.6

Modifications reserved

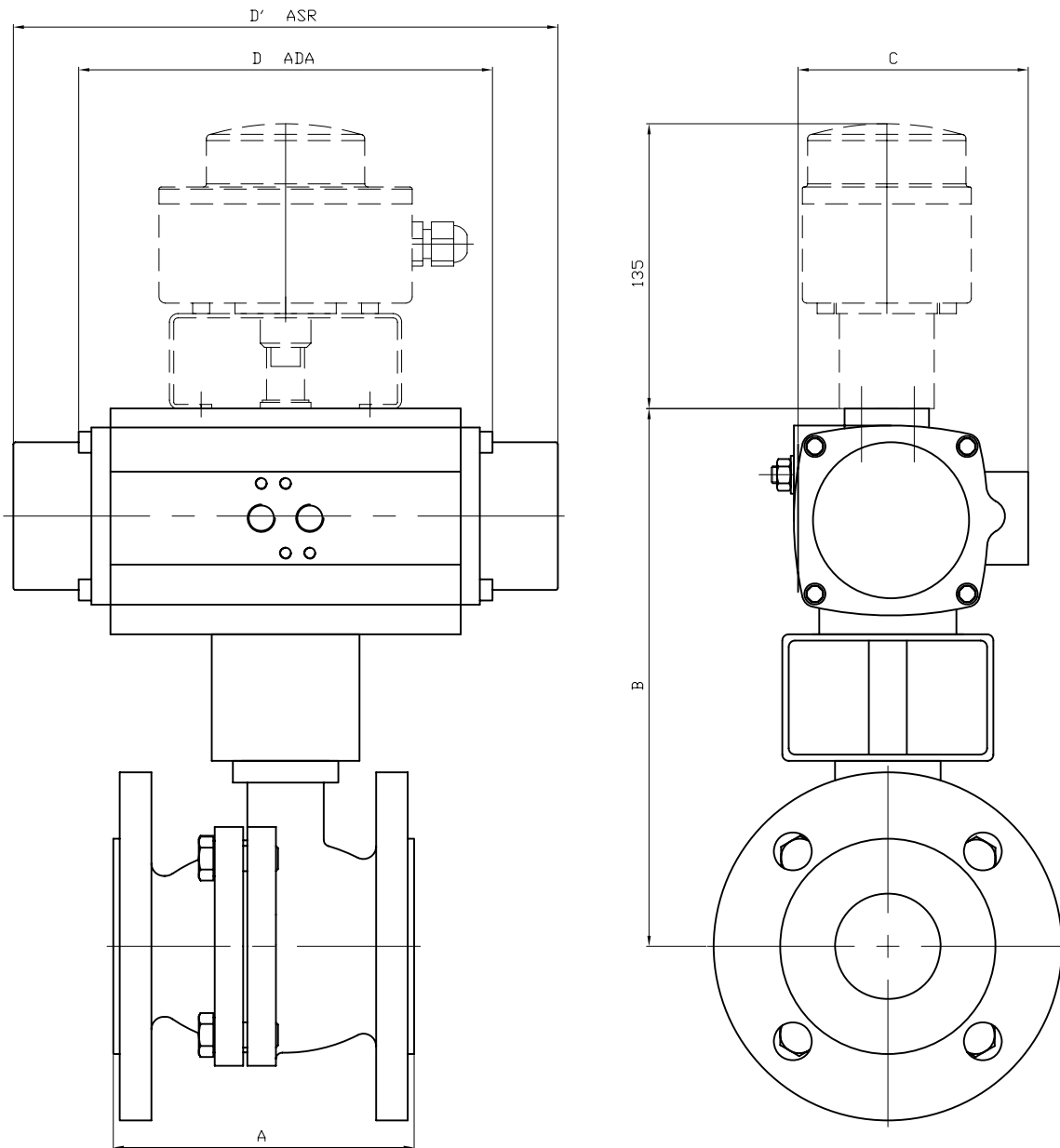
507 BALL VALVE WITH ADA PNEUMATIC ACTUATOR



DIMENSIONS (mm)


Size	15	20	25	32	40	50	65	80	100	125	150	200
Kv (m3/h)	37.4	74.8	105	176	223	416	660	1200	1980	3600	5040	10890
Ø P	13	17	24	31	38	50	65	80	100	125	150	200
L	115	120	125	130	140	150	170	180	190	200	210	400
L1	49	55.5	51.5	53	61	62	81.5	79	94	120.5	155	190
H	92	95.5	102.2	114.7	119	127	141	151.5	176.5	208	254.2	293.5
H1	48.5	53	59.5	72	77	85	98	108.5	134	165	190	229
E	170	170	170	170	302.5	302.5	224	335	350	350	500	500
W (kg)	2.12	2.72	3.62	5.32	6.90	9.00	11.7	14.7	20.2	33.8	49.8	81.8

Modifications reserved



DN	15		20		25		32		40		50		65		80		100		
ACTREG	ADA20	ASR20	ADA20	ASR20	ADA20	ASR40	ADA20	ASR40	ADA40	ASR80	ADA80	ASR130	ADA80	ASR130	ADA130	ASR300	ADA200	ASR500	
A	115		120		125		130		140		150		170		180		190		
B	174.5	174.5	179	179	174.5	193.5	198	217	222	244	252	262	265	275	282.5	302.5	349	383	
C	76	76	76	76	76	91	76	91	91	111	111	122	111	122	122	152.5	135.5	173	
D	145	-	145	-	145	-	145	-	158	-	177	-	177	-	196	-	225	-	
D'	-	163	-	163	-	195	-	195	-	217	-	258	-	258	-	348.5	-	397	
DN	125		150		200														
ACTREG	ADA300	ASR500	ADA300	ASR1200	ADA850														
A	200		210		400														
B	397	414	422	489	520														
C	152.5	173	152.5	212.5	191.5														
D	273	-	273	-	372														
D'	-	397	-	560	-														

Informations données à titre indicatif et sous réserve de modifications éventuelles

Ech: /	Date :29/10/2010	Dessiné par : E.D.	Tolérances générales : +/- 0.2	Modifications	Date	REV.
VANNE A SPHERE 507 ACTIONNEUR ACTREG + BFC				Matière :		
				Poids (Kg) :		
 45, Rue du Ruisseau 38297 SAINT QUENTIN FALLAVIER				Traitement : SANS		
				Plan n° Ens 1068		