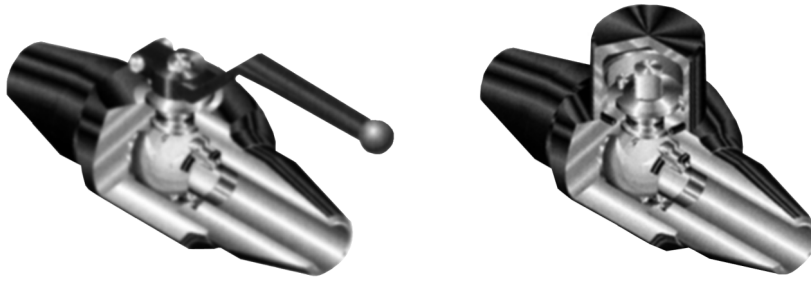


Ball Valve



PN 10-250 / Class 150-1500
DN 15-40

Applications

- Gas lines and gas installations
- Gases to DVGW Worksheet G 260/I and II
- Combustible liquids as well as non-corrosive fluids
- Application requirements and tests according to DIN 3230 Part 5 PG 3 for gas lines and gas installations, DIN 3230 Part 6 for combustible liquids as well as API 6D and customer-specific requirements.

Operating data

- Permissible pressure: 6 to 250 bar / Class 150 – 1500
- Permissible temperature -10 °C to +70 °C

Materials

- P265GH 1.0425

Standard design

- DVGW type tested
- Fully welded design
- Sealing on the downstream side in both flow directions
- Metal seat rings with captured O-ring
- Block and bleed system
- Floating ball
- Blow-out protected stem
- Lever on the stem
- Anti-static design

Design variants

- Seal cap over the stem
- Polyurethane coating as corrosion and cathodic protection for underfloor installation
- Possible operating temperature: -60 °C to +250 °C
- With flanges, threaded sockets, butt or socket weld ends
- Split body (bolted)

Additional information

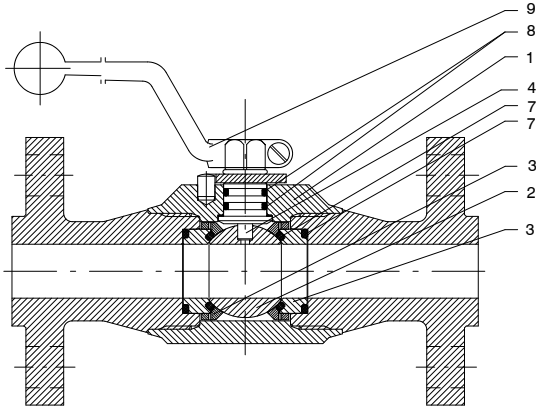
- Operating instructions: 8301.81

Purchase order data

- | | | | |
|---|-----------------------|----|----------------------------|
| 1 | Type | 7 | Material |
| 2 | PN | 8 | Fluid |
| 3 | DN | 9 | Flow rate |
| 4 | Operating pressure | 10 | Pipe connection |
| 5 | Differential pressure | 11 | Variants |
| 6 | Operating temperature | 12 | Type series booklet number |

Pressure/Temperature ratings

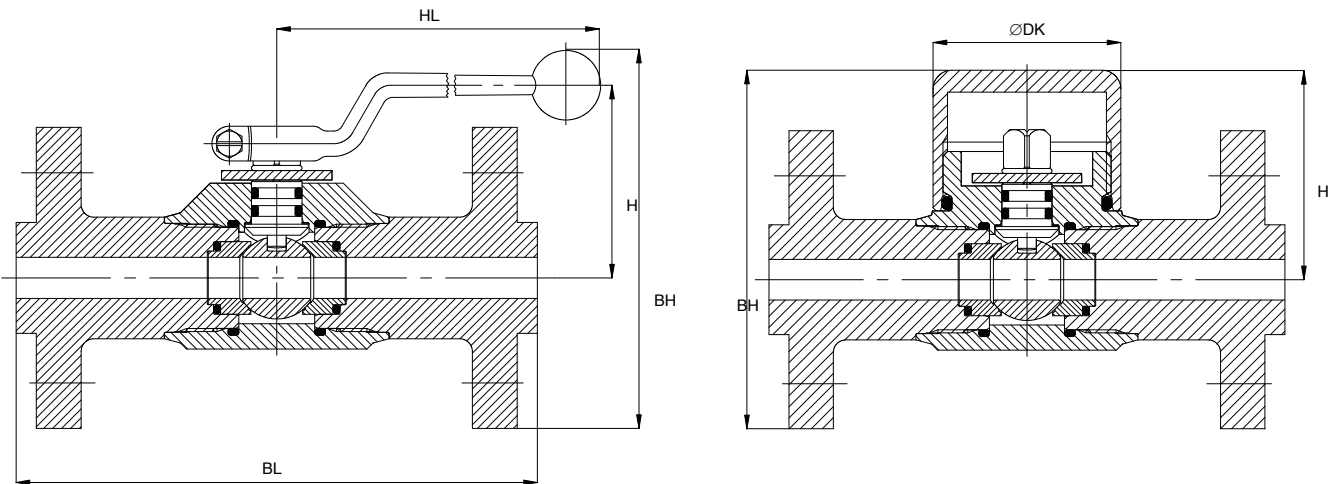
PN 10 - 250 Class 150 -1500	Steel pipe	-10 °C to 70 °C
--------------------------------	------------	-----------------



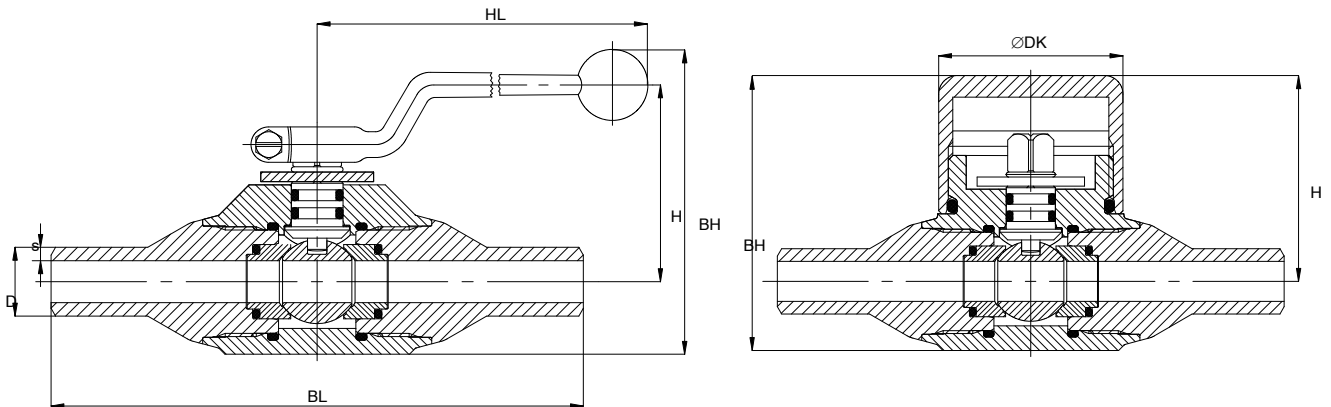
Materials

Part No.	Description	Materials	
1	Body	P265GH	1.0425
2	Ball	X90CrMoV18 *)	1.4112
3	Metal seat rings	X90CrMoV18 *)	1.4112
4	Stem	X20Cr13	1.4021
5	Flanges	P265GH	1.0425
6	Weld ends	P265GH	1.0425
7	Seat O-rings	FPM	
8	Stem O-rings	FPM	
9	Lever	Steel	
10	Seal cap	P265GH	1.0425

*) nickel plated, tungsten carbide coated or plasma nitrided

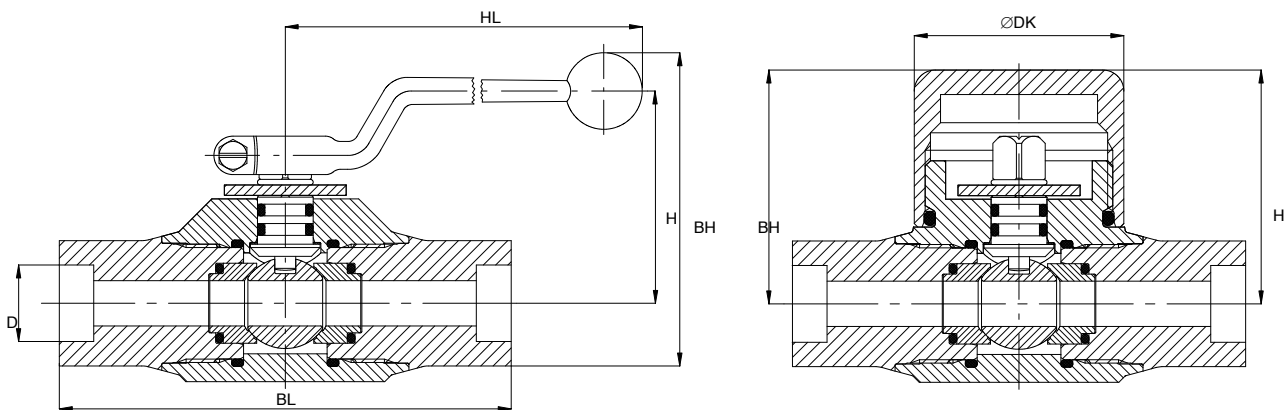
Connecting dimensions of flanged model

Dimensions

DN	Nom. pressure		Weight	With lever				With seal cap		
	PN	Class		BL	BH	HL	H	BH	H	ØDK
15		150	3.1	130	150	173	104	112	78	60
20		150	3.2	130	160	173	104	117	78	60
25		150	6.0	160	175	173	104	132	78	60
32RB		150	7.0	160	180	173	104	137	78	60
40RB		150	8.5	160	195	173	104	142	78	60
15		300-600	3.0	165	150	173	104	116	78	60
20		300-600	4.5	165	160	173	104	127	78	60
25		300-600	6.5	216	175	173	104	140	78	60
32RB		300-600	8.0	216	180	173	104	145	78	60
40RB		300-600	9.0	216	195	173	104	156	78	60
15		900-1500	5.5	216	160	173	104	129	78	60
20		900-1500	6.5	216	165	173	104	133	78	60
25		900-1500	10.5	254	190	173	104	153	78	60
32RB		900-1500	11.5	254	195	173	104	158	78	60
40RB		900-1500	15.0	254	205	173	104	167	78	60
15	10-16		2.8	130	145	173	104	115	78	60
20	10-16		3.5	130	155	173	104	120	78	60
25	10-16		6.5	160	160	173	104	136	78	60
32RB	10-16		7.5	160	175	173	104	148	78	60
40RB	10-16		8.0	160	180	173	104	153	78	60
15	25-40		3.1	165	145	173	104	115	78	60
20	25-40		3.6	165	155	173	104	120	78	60
25	25-40		6.8	216	160	173	104	136	78	60
32RB	25-40		7.8	216	175	173	104	148	78	60
40RB	25-40		8.5	216	180	173	104	153	78	60
15	63-100		4.5	130	145	173	104	120	78	60
20	63-100		5.5	130	160	173	104	130	78	60
25	63-100		7.0	160	185	173	104	148	78	60
32RB	63-100		9.5	160	192	173	104	154	78	60
40RB	63-100		13.0	160	200	173	104	163	78	60
15	160		3.1	165				120	78	60
20	160		3.6	165				130	78	60
25	160		6.8	216				148	78	60
32RB	160		7.8	216				154	78	60
40RB	160		8.5	216				163	78	60
15	160-250		4.0	165	145	173	104			
20	160-250		5.5	165	160	173	104			
25	160-250		10.5	216	185	173	104			
32RB	160-250		12.0	216	192	173	104			
40RB	160-250		13.5	216	200	173	104			

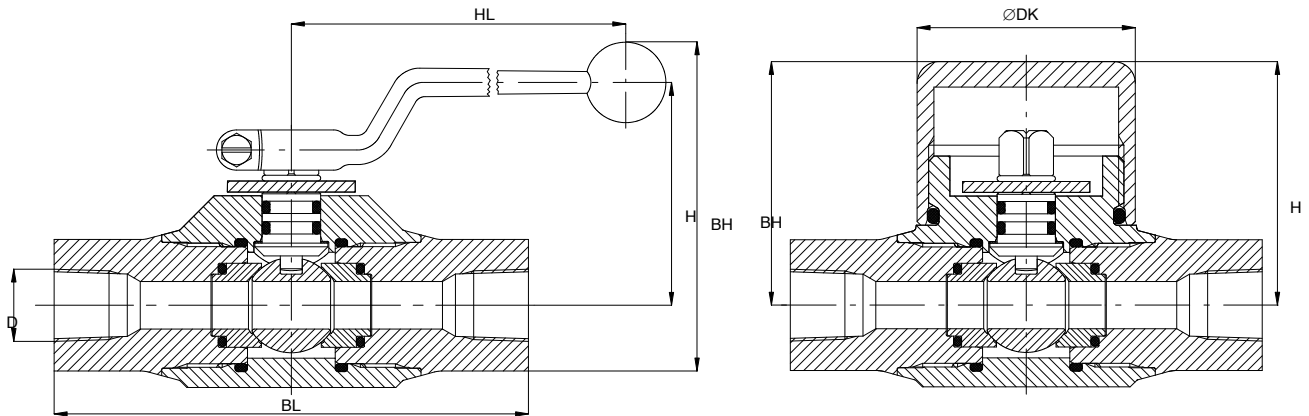
Connecting dimensions of model with butt weld ends

Dimensions

DN	Nom. pressure		Weight	D	s	BL	With lever			With seal cap		
	PN	Class					BH	HL	H	BH	H	ØDK
15	10-250	150-1500	3.1	21.3	3.7	165	113	173	104	90	78	60
20	10-250	150-1500	3.2	26.9	3.9	165	113	173	104	90	78	60
25	10-250	150-1500	60	33.7	4.5	216	137	173	104	111	78	60
32RB	10-250	150-1500	7.0	42.4	4.9	216	137	173	104	111	78	60
40RB	10-250	150-1500	8.5	48.3	5.1	216	137	173	104	111	78	60

Other weld end wall thicknesses possible

Connecting dimensions of model with socket weld ends

Dimensions

DN	Nom. pressure		Weight	D	BL	With lever			With seal cap		
	PN	Class				BH	HL	H	BH	H	ØDK
15	10-250	150-1500	1.6	21.3	130	113	173	104	90	78	60
20	10-250	150-1500	1.6	26.9	130	113	173	104	90	78	60
25	10-250	150-1500	3.0	33.7	130	137	173	104	111	78	60
32RB	10-250	150-1500	3.0	42.4	130	137	173	104	111	78	60
40RB	10-250	150-1500	3.0	48.3	130	137	173	104	111	78	60

Connecting dimensions of model with threaded sockets

Dimensions

DN	Nom. pressure			D	BL	With lever			With seal cap		
	PN	Class	Weight			BH	HL	H	BH	H	ØDK
15	10-250	150-1500	1.6	1/2"	130	113	173	104	90	78	60
20	10-250	150-1500	1.6	3/4"	130	113	173	104	90	78	60
25	10-250	150-1500	3.0	1"	130	137	173	104	111	78	60
32RB	10-250	150-1500	3.0	1 1/4"	130	137	173	104	111	78	60
40RB	10-250	150-1500	3.0	1 1/2"	130	137	173	104	111	78	60

