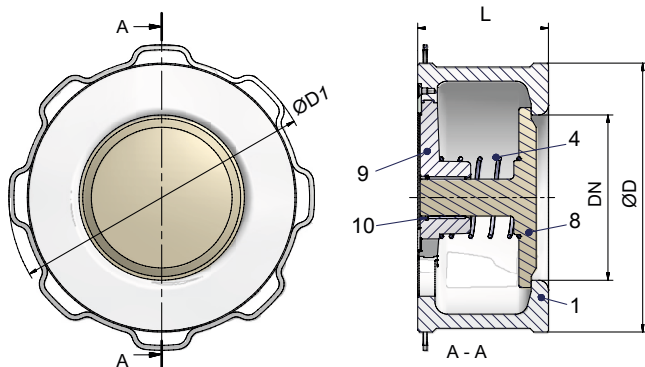
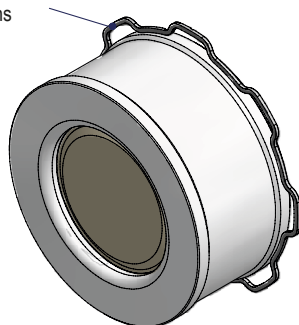


Disc check valve in clamping version (Stainless steel)


 Use centering ring:
 refer to table Dimensions


- Material:**
- Stainless steel
 (DN125-200: GX5CrNiMo19-11-2, 1.4408,
 DN250-350: X2CrNiMo17-12-2, 1.4404)
- Nominal pressure:**
- PN10 - 40
- Verwendung:**
- For liquids, gases and steam in all industrial processes
- Features:**
- Centering at the body (outside-Ø or centering ring)
 - Flange sealing surfaces with grooves
 - Operating limits acc. to DIN EN 1092-1 and AD-leaflets W10
 - Metallic sealing (GX5CrNiMo19-11-2, 1.4408), Tightness acc. to DIN EN 12266-1, Leakage rate D
 - Marking acc. to DIN EN 19
- Max. temperature:**
- 300°C
 - optional up to max. 500°C
- Connection:**
- Mounting between flanges to DIN EN 1092-1 Form B1, PN 6 / 10 / 16 / 40
 - Mounting between flanges to ANSI B16.5 Class 150 / 300 RF
- Options:**
- Spring of Hastelloy up to 400°C
 - Spring of Nimonic up to 500°C
 - EPDM soft sealing (-50°C up to 130°C) Leakage rate A acc. to DIN EN 12266-1
 - NBR soft sealing (-30°C up to +120°C) Leakage rate A acc. to DIN EN 12266-1
 - VITON soft sealing (-20°C up to +200°C) Leakage rate A acc. to DIN EN 12266-1
 - PTFE soft sealing (-200°C up to +200°C) Leakage rate D acc. to DIN EN 12266-1

Parts			
Pos.	Sp.p.	Designation	Fig. 55.001
1		Body	DN125-200: GX5CrNiMo19-11-2, 1.4408 DN250-350: X2CrNiMo17-12-2, 1.4404
4		Spring	X5CrNiMo17-12-2, 1.4401 (optional: Hastelloy or Nimonic)
8	x	Valve plate	GX5CrNiMo19-11-2, 1.4408
9		Spring plate	X5CrNi18-10, 1.4301
10		Retaining ring	DN125-150: X5CrNiMo17-12-2, 1.4401 (optional: Hastelloy)
		Centering ring	X5CrNi18-10, 1.4301
	L Spare parts		

DN	125	150	200	250	300	350
----	-----	-----	-----	-----	-----	-----

Face-to-face dimension FTF series 49 ac. to DIN EN 558 (from DN 250 series 52)							
L	(mm)	90	106	140	200	250	280

Dimensions								
Ø D	PN10	(mm)	192	218	273	328	378	438
Ø D	PN16	(mm)	192	218	273	328	378	444
Ø D	PN25	(mm)	192	--	--	--	--	457
Ø D1 (outside-Ø centering ring)		(mm)	--	226 ¹⁾	283 ¹⁾	338 ¹⁾	400 ¹⁾	--
Ø D	PN40	(mm)	192	--	--	--	--	474
Ø D1 (outside-Ø centering ring)		(mm)	--	226 ¹⁾	290 ¹⁾	352 ¹⁾	417 ¹⁾	--
Ø D	ANSI150	(mm)	192	218	273	--	--	447
Ø D1 (outside-Ø centering ring)		(mm)	--	--	--	338 ¹⁾	400 ¹⁾	--
Ø D	ANSI300	(mm)	--	--	--	--	--	482
Ø D1 (outside-Ø centering ring)		(mm)	212 ¹⁾	247 ¹⁾	304 ¹⁾	352 ¹⁾	417 ¹⁾	--
Kvs-values		(m ³ /h)	211,4	326	564	897	1320	1728
PED Category			II	II	II	II	II	II

¹⁾ the supplied centering ring must be used

Weights								
55.001	(kg)	10	14	24	50	77	108	

DN			125	150	200	250	300	350
Set pressure	$\Delta p \uparrow$	(mbar)	37	40	46	69	73	73
	$\Delta p \rightarrow$	(mbar)	22	25	28	42	44	44
	$\Delta p \downarrow$	(mbar)	7	10	10	15	15	15

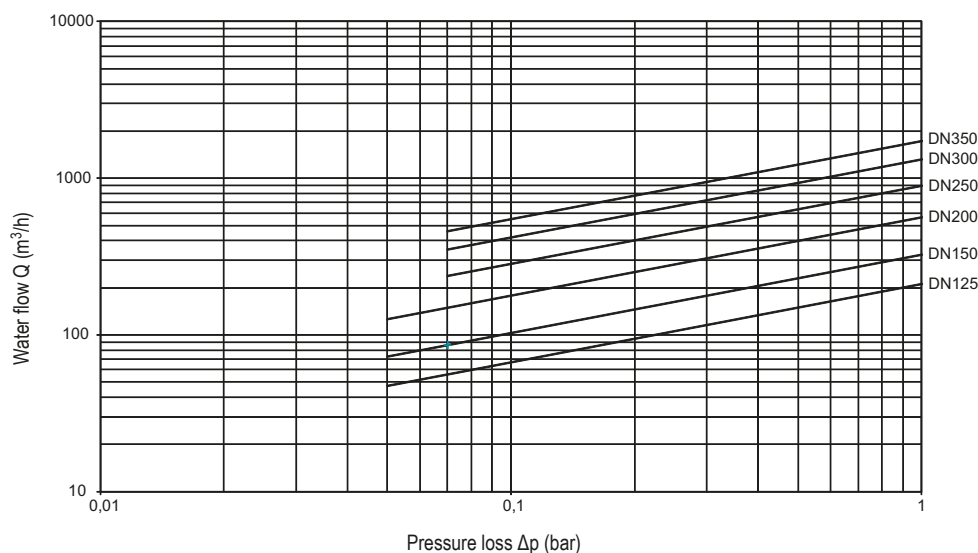
Pressure-temperature-ratings Intermediate values for max. permissible operational pressures can be determined by linear interpolation of the given temperature / pressure chart..

acc. to DIN EN 1092-1			-200°C up to 20°C	100°C	150°C	300°C	400°C	500°C
1.4408	PN10 / 16 / 25 / 40	(bar)	40	40	36,3	29,7	27,4	26,4
1.4404	PN10 / 16 / 25 / 40	(bar)	40	37,9	34,4	27,6	25,7	24,3
			Standard spring				Spring of Hastelloy C4 (optional)	Feder aus Nimonic (optional)

Pressure loss diagram

Pressure drop diagramm for water at 20°C with opened valve and horizontal flow.

For calculating the pressure drop of the medium the equivalent water flow volume has to be calculated.



DN			125	150	200	250	300	350	
Q water	at Δp	0,05 bar	(m³/h)	47,3	72,9	126,1	--	--	--
		0,07 bar	(m³/h)	56,0	86,3	149,2	237,3	349,2	457,2
		1 bar	(m³/h)	211,4	326	564	897	1320	1728
Travel			(mm)	27	35	46	55	84	84
Zeta-value				8,42	7,35	7,76	7,49	7,17	7,75
Δp min. stable			(bar)	0,05	0,05	0,05	0,07	0,07	0,07
Q water min stable			(m³/h)	47,3	72,9	126,1	237,3	349,2	457,2

The operating point of the valve cannot be chosen in the unstable region!



Technology for the Future.
GERMAN QUALITY VALVES

ARI-Armaturen Albert Richter GmbH & Co. KG, D-33750 Schloß Holte-Stukenbrock,

Tel. +49 52 07 / 994-0, Telefax +49 52 07 / 994-158 or 159 Internet: <http://www.ari-armaturen.com> E-mail: info.vertrieb@ari-armaturen.com