

# STAINLESS STEEL SIGHT GLASS SKT9

## MAIN CHARACTERISTICS

The SKT9 sight glass is dedicated to the visual control of flow in stainless steel pipes. With the full stainless steel construction, the SKB2 is mainly used for applications in chemical processes. The SKT9 has a double windows construction and is fitted with a stainless steel moving flapper for the control of transparent fluids.

## AVAILABLE MODELS

Sizes ½ " to 2"

BSP screwed connections.

## CLASSIFICATION ACCORDING TO PED 97/23

Homologation CE 0035 category II.

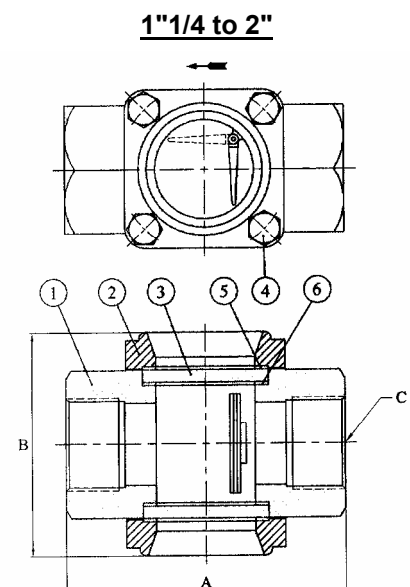
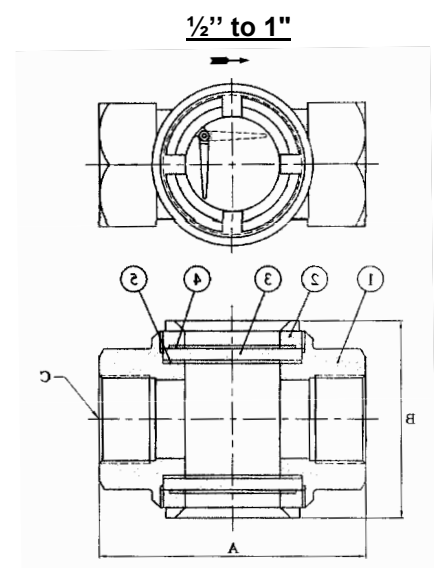
## LIMITS OF USE

PS : 16 bar

TS : -10°C / +180°C

## CONSTRUCTION

Item	Description	Material
1	Body	Stainless steel ASTM A351 CF8M
2	Cover	Stainless steel ASTM A351 CF8M
3	Glass	Tempered glass
4	Screw	Stainless steel AISI 304
5	Below gasket	PTFE
6	Above gasket	PTFE
7	Flapper	Stainless steel ASTM A351 CF8M



Modifications reserved

# SIGHT GLASS SKT 9

## DIMENSIONS (mm)

DN	1/2"	3/4"	1"	1"1/4	1"1/2	2"
A	108	108	119	125	135	170
B	71	71	71	100	102	120

## INSTALLING AND MAINTAINING

- Before installation or maintaining, shut off the line using upstream and downstream valves.
- Remove the pressure inside and drain the pipe.
- If the pipe is warm, wait the complete cooling to room temperature.
- Wear protections equipments adapted to this kind of operation (gloves and glasses).

### Installing

- Decide the position of the sight glass on the line in order to make it visible for the operators.
- Install the appropriate gaskets.

### Maintaining

- Remove the cover and remove the glass.
- Clean the inner parts of the body.
- Verify the state of the glass and check any starting of chemical corrosion or mechanical erosion. Replace it if necessary.

## SPARE PARTS

Set including 1 glass and 2 gaskets

DN	Ø of the glass (mm)	Thickness of the glass (mm)	Reference
1/2" - 1"	54,8	5,9	981074
1"1/4 - 1"1/2	59,8	7,8	981075
2"	69,9	9,8	981076

Modifications reserved