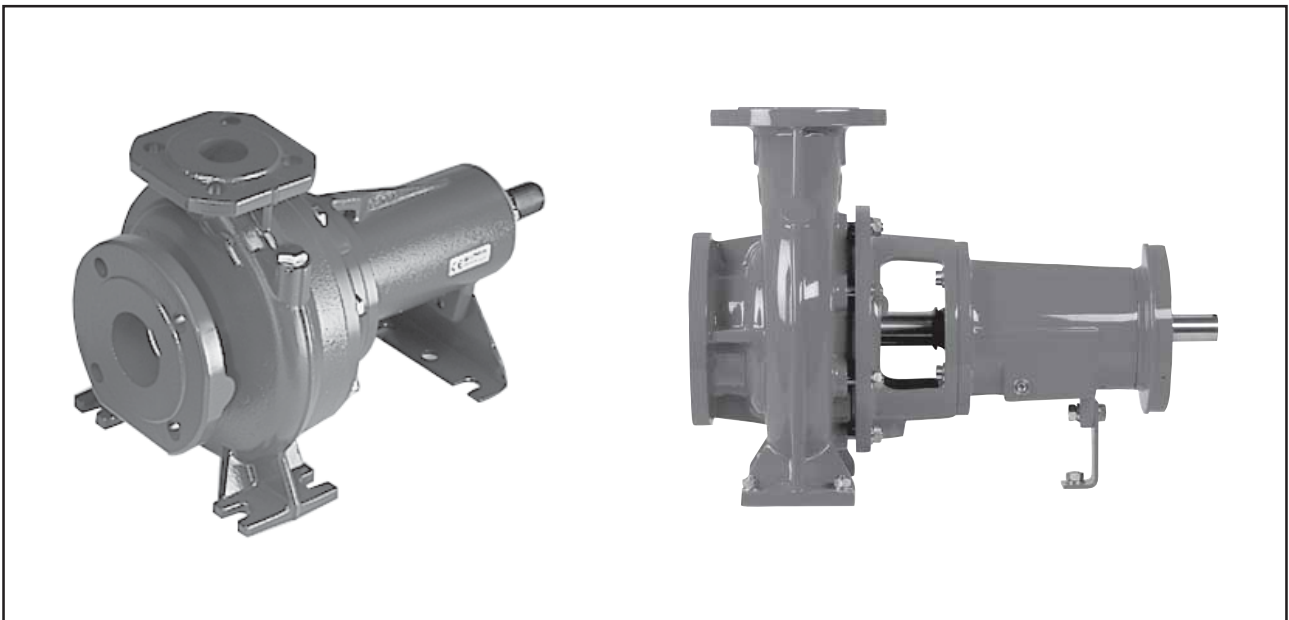


VOGEL - Spiralgehäusepumpen
Pompes à volute VOGEL
VOGEL - Volute Casing Pumps

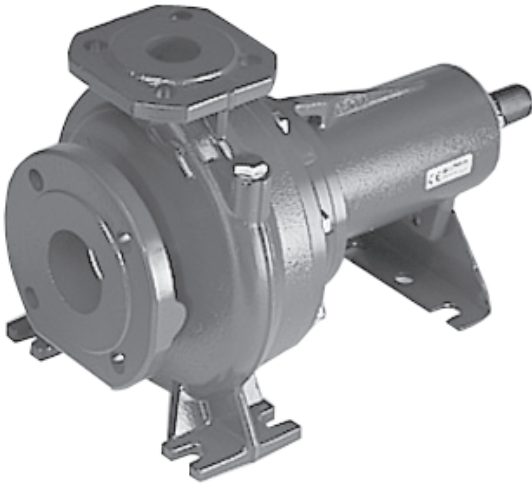
Baureihe LN / L

Série LN / L

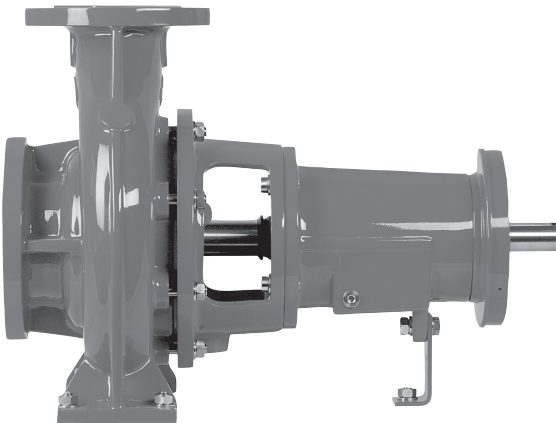
Design LN / L



Engineered for life

VOGEL Volute Casing Pumps according to EN 733, Design LN / L


Design LN



Design L

Performance:

Capacity up to 600 m³/h (2640 USgpm)
 Head up to 100 m (330 feet)
 Speed up to 2950 min⁻¹ (2950 rpm)

Pump Sizes:

DN 32 up to DN 150 (1 1/4" up to 6") discharge,
 sizes DN 125 up to DN 600 (5" up to 24"),
 refer to design LS, brochure 1300.1.B.

Temperature of pumped liquid:

max. 140°C (284°F)

Casing Pressure:

Design LN:

up to 16 bar/120°C or 13 bar/140°C

Design L:

up to 12 bar/120°C or 10 bar/140°C

Pumps in other materials or for higher casing pressures
 refer to design IC or ICP.

Liquids:

Clean and slightly contaminated fluids
 (without bigger solids)

Cold and hot water

Condensate

Water-Glycol mixtures, oil emulsions, etc.

Applications:

Water supply and water treatment

Cooling and hot water supply in industries and
 building services

Filter systems, etc.

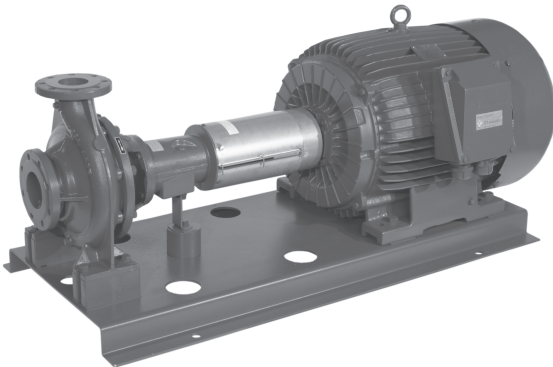
Materials:

Design	Code	Size	Impeller	Casing, Seal chamber	Wear rings	Bearing frame	Motor adapter	Shaft
LN	VN	32-125 up to 65-125	1.4404	0.6020	1.4402	0.6020 1)	0.6020	1.4401
	NN	65-160 up to 80-250	0.6020		2)			
	SN		CC 480 K					
L	NN	65-315 80-315 80-400 100-160 up to 150-400	0.6025	0.6025	2)	0.6025	0.6025	1.4021
	SN		CC 480 K					

1) some sizes in aluminium 2) optional 0.6020 or 0.6025

Design Features: LN & L

- Horizontal single stage volute casing pump, designed in accordance with EN 733.
The casings are identical with the former DIN 24255 and therefore interchangeable.
- Meet the requirements according to ISO 9908.
- High efficiency enclosed impeller. Sizes 32-125 up to 65-125 standard made of stainless steel 1.4404, stamped and laser welded. Sizes 65-160 up to 150-400 standard cast iron, optional bronze.
- Casing in solid design to absorb the flange forces in accordance with ISO 9908. Suction horizontal, discharge top centerline. Flanges DN 32 up to DN 150 standard PN 10/16, except suction flange DN 200, standard PN10, optional PN 16.
- The back-pull-out system allows simple maintenance. The impeller, the shaft sealing and the bearings are easy removeable on the motor side without disassembling the casing from the piping.
- Seal chamber dimensioned according to EN 3096.
- Large open conical seal chamber, self de venting with internal circulation for proper lubrication and cooling of the seal. Ribs in the seal chamber prevent the accumulation of air or gas in the area of the seal faces and reduce wear caused by solids in the fluid.
- Shaft sealing by means of single, unbalanced mechanical seal according to EN 12756, design U, version k (former DIN 24 960, I1k).
- Standard mechanical seal materials: Carbon – Silicon Carbide (SiC) – EPDM (BQ1EGG), optional elastomers in FPM (Viton®) (BQ1VGG).
As option also available in SiC – SiC – FPM (Viton®) (Q1Q1VGG).
- Solid bearing fram, increased distance of the bearings in relation to the impeller diameter reduces the shaft deflection in the zone of the mechanical seal.

VOGEL Volute Casing Pumps according to EN 733, Design LN / L

Accessories:

- Elastic coupling, bigger sizes 65-315, 80-315, 80-400 and 100-160 up to 150-400 optional also with spacer coupling
- Coupling guards – completely closed, according to EN 892
- Steel base plates with level compensation for pump and motor


HYDROVAR

- HYDROVAR from VOGEL is a compact pump controller.
- Simple mounting and installation.
- The integrated frequency converter has included an automatic controller for pressure, pressure differential or capacity.
- Applications with several pumps allow to have an automated change over in case of faults and to control the lead and lag pump according to demand by means of the integrated interfaces.
- HYDROVAR Smart for performance ranges above 45 kW. Hydrovar Controller without integrated converter.



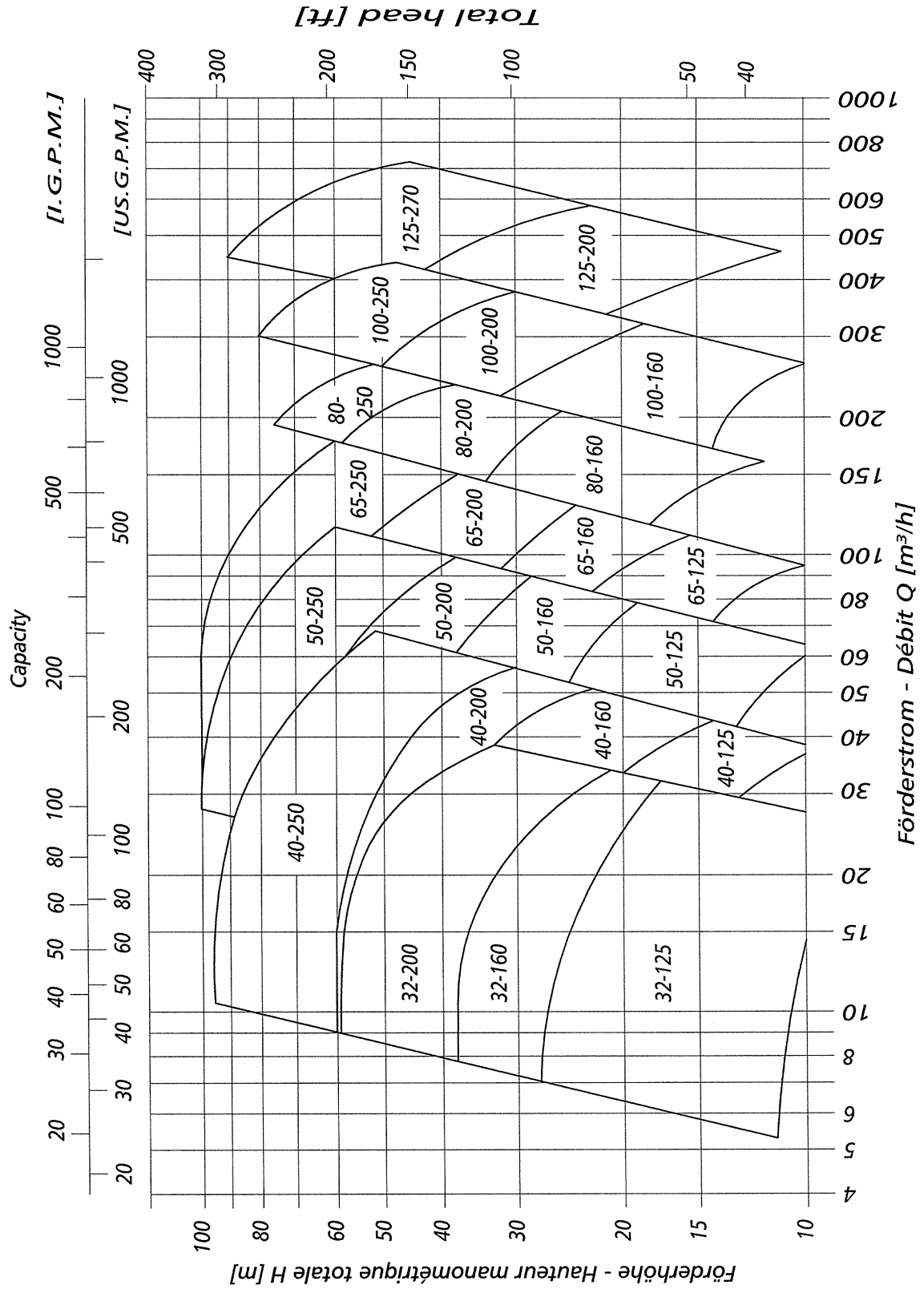
VOGEL SPIRALGEHÄUSEPUMPEN
 VOGEL POMPES A VOLUTES
 VOGEL VOLUTE CASING PUMPS

Bauart
 Construction
 Design

L / LN
 2900 min⁻¹

1100.1C100
 Rev. 1

Vogel Pumpen



Technische Änderungen vorbehalten!
 Modifications techniques, sans préavis, réservées!
 This leaflet is subject to alteration without notice

Kennlinien gelten für kaltes Wasser $\rho=1\text{kg/dm}^3$ und $\nu=1\text{mm}^2/\text{s}$
 Caractéristiques réfèrent à l'eau froid $\rho=1\text{kg/dm}^3$ et $\nu=1\text{mm}^2/\text{s}$
 Data refer to cold water $\rho=1\text{kg/dm}^3$ and $\nu=1\text{mm}^2/\text{s}$



ITT

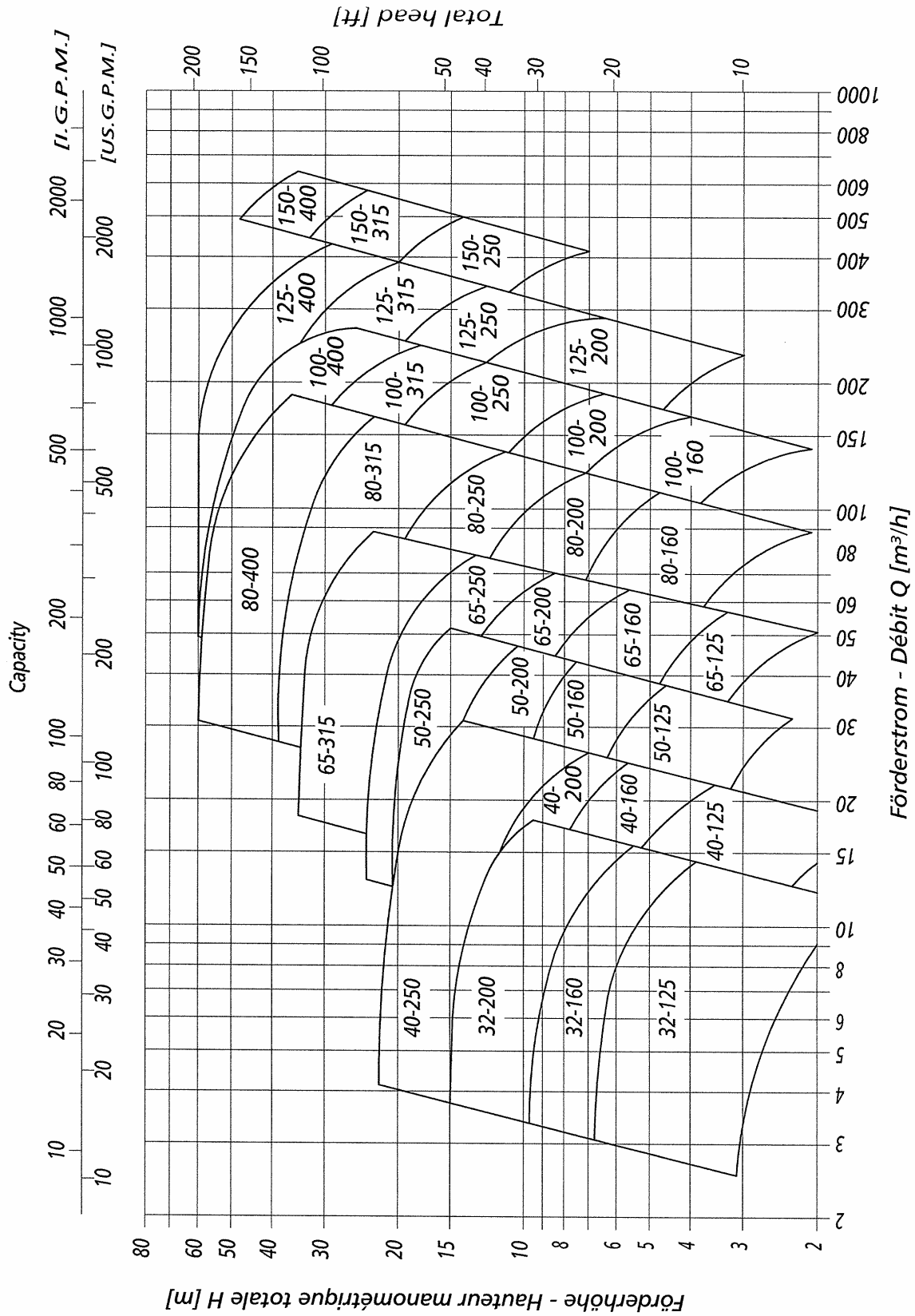
VOGEL SPIRALGEHÄUSEPUMPEN
VOGEL POMPES A VOLUTES
VOGEL VOLUTE CASING PUMPS

Bauart
Construction
Design

L / LN
1450 min⁻¹

1100.1C200
Rev. 1

Vogel Pumpen



Technische Änderungen vorbehalten!
Modifications techniques, sans préavis, réservées!
This leaflet is subject to alteration without notice

Kennlinien gelten für kaltes Wasser $\rho=1\text{kg/dm}^3$ und $\nu=1\text{mm}^2/\text{s}$
Caractéristiques référent à l'eau froide $\rho=1\text{kg/dm}^3$ et $\nu=1\text{mm}^2/\text{s}$
Data refer to cold water $\rho=1\text{kg/dm}^3$ and $\nu=1\text{mm}^2/\text{s}$



Aufbau der Typenbezeichnung
Composition des typer
Nomenclature code structure

1100.1A101
 Rev.0

Vogel Pumpen

Bauart Modèle Design	Druckstutzen Nennweite Orifice de refoul. Diam. nominal Discharge branch diameter	LaufRad-Normdurchmesser Diamètre normalisé de la roue Full impeller diameter	Wellenabdichtung Entancheite de la 'arbre Shaft sealing	Werkstoff LaufRad Matériau de roue Material of impeller	Werkstoff Gehäuse Matériau de Corps Material of casing	Motorleistung in 1/10 kW Puissance du moteur en 1/10 kW Motor power in 1/10 kW	Motor-Polzahl Nombre de poles du moteur Poles of motor	Kurzbeschreibung Description succincte Explanation
LN L								Einstufige Spiralgehäusepumpe Pompe a volutes Single stage volute casing pump
	100							Druckstutzennennweite [mm] Diam. nomin. de l' orifice de refoul. [mm] Discharge branche [mm]
		-						
		160						LaufRad Durchmesser [mm] Diametre normal de la roue [mm] Nominal impeller diameter [mm]
			U					Gleitringdichtung Garnitur mécanique Mechanical seal
				V				Edelstahl d' acier alliée Stainless steel
				N	N			Grauguss Fonte grise Cast iron
				S				Bronze Bronze Bronze
						220		Motorleistung Puissance du moteur Motor power
							2	Betriebsdrehzahl 2900 min ⁻¹ Nombre de tours normal 2900 min ⁻¹ Operatine speed 2900 min ⁻¹
							4	Betriebsdrehzahl 1450 min ⁻¹ Nombre de tours normal 1450 min ⁻¹ Operatine speed 1450 min ⁻¹

Beispiel einer Typenbezeichnung:

L 100-160USN2202 = Einstufige Spiralgehäusepumpe, Bauart L, Druckstutzen DN 100, LaufRadnenn Durchmesser 160 mm, Gleitringdichtung, LaufRad aus Bronze, Gehäuse aus Grauguss, Motor 22 kW, Betriebsdrehzahl 2polig = 2900 min⁻¹

Example de la dénomination d' un type:

L 100-160USN2202 = Pompe a volutes, type L, orifice de refoulement DN 100, diamètre normal de la roue 160 mm, Garniture mécanique, roue en bronze, corps en fonte, moteur 22 kW, nombre de tour normal 2 pôles = env. 2900 min⁻¹

Example of naming code:

L 100-160USN2202 = Single stage volute casing pump, design L, discharge branch DN 100, nominal impeller diameter 160 mm, Mechanical seal, impeller of bronze, casing of cast iron, motor 22 kW, operating speed 2 pole = 2900rpm

**ITT**

VOGEL SPIRALGEHÄUSEPUMPEN
VOGEL POMPES A VOLUTES
VOGEL VOLUTE CASING PUMPS

Bauart
Construction
Design

L
LN

1100.1A602
 Rev.1

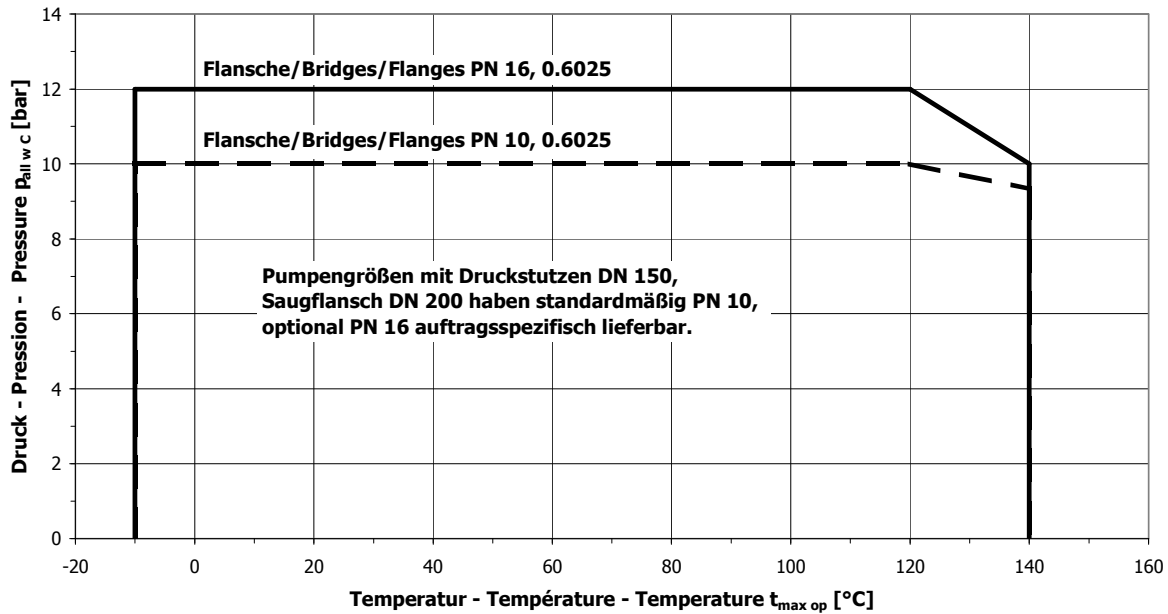
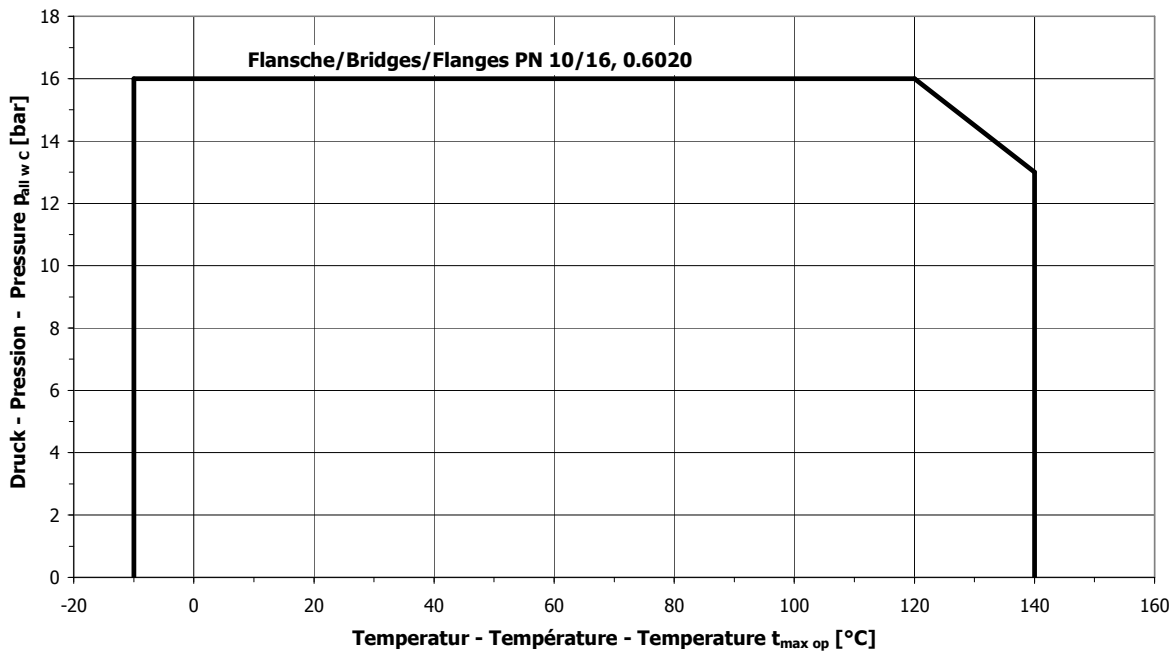
Vogel Pumpen

Druck- und Temperaturgrenzen - Limites de pression et température - Pressure and temperatures limits

Bei Einsatz der Pumpen auch einschlägige Gesetze und Vorschriften beachten (z.B. DIN 4747 oder DIN 4752, Abschnitt 4.5).

Attendez des prescriptions compétent (p.e. DIN 4747 ou DIN 4752, section 4.5).

Observe also local regulations (e.g. DIN 4747 or DIN 4752, para 4.5).

L**LN**

Einsatzgrenzen für andere Werkstoffe auf Anfrage.

Limites d'utilisation pour d'autres matériaux sur demande

Operating conditions for other materials on request

Order no.:	Type:	Date:
Customer:		
Serial no.:	Item no.:	Sign:

This leaflet is subject to alteration!
 Draw not to scale!
 Certified for construction purposes only when signed!

Modification techniques sans préavis, réservées!
 Graphique non à l'échelle!
 Dimensions valables uniquement revêtues d'une signature!

Technische Änderungen vorbehalten!
 Nicht maßstäblich!
 Maße nur mit Unterschrift verbindlich!



VOGEL SPIRALGEHÄUSEPUMPEN
VOGEL POMPES A VOLUTES
VOGEL VOLUTE CASING PUMPS

Bauart
Construction
Design

L
LN

1100.1A604
 Rev.1
 Vogel Pumpen

Technische Änderungen vorbehalten!
 Nicht maßstäblich!
 Maße nur mit Unterschrift verbindlich!

Modification techniques sans préavis, réservées!
 Graphique non à l'échelle!
 Dimensions valables uniquement revêtues d'une signature!

This leaflet is subject to alteration!
 Draw not to scale!
 Certified for construction purposes only when signed!

Zul. Stutzenkräfte und Momente in Anlehnung an die EUROPUMP-Empfehlung für Pumpen nach ISO 5199-2002.
 La force et couple admissibles selon recommandations EUROPUMP d'après ISO 5199-2002.
 Permissible loads and torques on pump flanges basing on suggestions by EUROPUMP acc. to ISO 5199-2002 for pumps.

Type	Saugstutzen/Bride d'aspiration/Suction flange						Druckstutzen/Bride de refoulement/Discharge flange												
	Ø	DN	Fx	Fy	Fz	ΣF	Mx	My	Mz	ΣM	Ø	DN	Fx	Fy	Fz	ΣF	Mx	My	Mz
LN 32-125	50	578	578	525	473	910	490	350	403	718	32	315	298	368	578	385	263	298	560
LN 32-160	50	578	525	473	910	490	350	403	718	32	315	298	368	578	385	263	298	560	
LN 32-200	50	578	525	473	910	490	350	403	718	32	315	298	368	578	385	263	298	560	
LN 40-125	65	735	648	595	1155	1155	525	385	420	770	40	385	350	438	683	455	315	368	665
LN 40-160	65	735	648	595	1155	1155	525	385	420	770	40	385	350	438	683	455	315	368	665
LN 40-200	65	735	648	595	1155	1155	525	385	420	770	40	385	350	438	683	455	315	368	665
LN 40-250	65	735	648	595	1155	1155	525	385	420	770	40	385	350	438	683	455	315	368	665
LN 50-125	65	735	648	595	1155	1155	525	385	420	770	50	525	473	578	910	490	350	403	718
LN 50-160	65	735	648	595	1155	1155	525	385	420	770	50	525	473	578	910	490	350	403	718
LN 50-200	65	735	648	595	1155	1155	525	385	420	770	50	525	473	578	910	490	350	403	718
LN 50-250	65	735	648	595	1155	1155	525	385	420	770	50	525	473	578	910	490	350	403	718
LN 65-125	80	875	788	718	1383	1383	560	403	455	823	65	648	595	735	1155	525	385	420	770
LN 65-160	80	875	788	718	1383	1383	560	403	455	823	65	648	595	735	1155	525	385	420	770
LN 65-200	80	875	788	718	1383	1383	560	403	455	823	65	648	595	735	1155	525	385	420	770
LN 65-250	80	875	788	718	1383	1383	560	403	455	823	65	648	595	735	1155	525	385	420	770
L 65-315	80	875	788	718	1383	1383	560	403	455	823	65	648	595	735	1155	525	385	420	770
LN 80-160	100	1173	1050	945	1838	1838	613	438	508	910	80	788	718	875	1383	560	403	455	823
LN 80-200	100	1173	1050	945	1838	1838	613	438	508	910	80	788	718	875	1383	560	403	455	823
LN 80-250	100	1173	1050	945	1838	1838	613	438	508	910	80	788	718	875	1383	560	403	455	823
L 80-315	100	1173	1050	945	1838	1838	613	438	508	910	80	788	718	875	1383	560	403	455	823
L 80-400	100	1173	1050	945	1838	1838	613	438	508	910	80	788	718	875	1383	560	403	455	823
L 100-160	125	1383	1243	1120	2170	2170	735	525	665	1068	100	1050	945	1173	1838	613	438	508	910
L 100-200	125	1383	1243	1120	2170	2170	735	525	665	1068	100	1050	945	1173	1838	613	438	508	910
L 100-250	125	1383	1243	1120	2170	2170	735	525	665	1068	100	1050	945	1173	1838	613	438	508	910
L 100-315	125	1383	1243	1120	2170	2170	735	525	665	1068	100	1050	945	1173	1838	613	438	508	910
L 100-400	125	1383	1243	1120	2170	2170	735	525	665	1068	100	1050	945	1173	1838	613	438	508	910
L 125-200	150	1750	1575	1418	2748	2748	875	613	718	1278	125	1243	1120	1383	2170	735	525	665	1068
L 125-250	150	1750	1575	1418	2748	2748	875	613	718	1278	125	1243	1120	1383	2170	735	525	665	1068
L 125-270	150	1750	1575	1418	2748	2748	875	613	718	1278	125	1243	1120	1383	2170	735	525	665	1068
L 125-315	150	1750	1575	1418	2748	2748	875	613	718	1278	125	1243	1120	1383	2170	735	525	665	1068
L 125-400	150	1750	1575	1418	2748	2748	875	613	718	1278	125	1243	1120	1383	2170	735	525	665	1068
L 150-250	200	2345	2100	1890	3658	3658	1138	805	928	1680	150	1575	1418	1750	2748	875	613	718	1278
L 150-315	200	2345	2100	1890	3658	3658	1138	805	928	1680	150	1575	1418	1750	2748	875	613	718	1278
L 150-400	200	2345	2100	1890	3658	3658	1138	805	928	1680	150	1575	1418	1750	2748	875	613	718	1278

Darstellung der Achsrichtungen siehe Pumpenbild auf Seite 2.
 Description d'inclinaison de l'axe voir d'image de pompe page 2.
 Direction of axis see pump picture of page 2.

Order no.:	Type:	Date:
Customer:		
Serial no.:	Item no.:	Sign:

Summationsformel / Correction ou formule de compensation / Weighting or compensation formula

Falls nicht alle Belastungen die zulässigen Werte überschreiten, darf eine dieser Belastungen das Limit übersteigen wenn folgende zusätzliche Bedingung erfüllt ist:

- jede einzelne Kraft oder Momentenkomponente ist mit dem 1,4-fachen Wert des maximal zulässigen Wertes begrenzt;
- die an jedem Flansch angreifenden Kräfte und Momente müssen folgende Bedingung erfüllen:

Quand les forces appliquées sont en dessous des valeurs maximum données, l'une de ces forces peut excéder la valeur limite normale à condition que:

- Chaque élément de force ou de moment soit limité à 1,4 fois la valeur maximum admissible.
- Les forces et moments réels sur chaque brides répondent à la formule suivante:

When the applied loads do not all attain the maximum values allowed, one of these loads may exceed the normal limit, provided that the following supplementary conditions are satisfied:

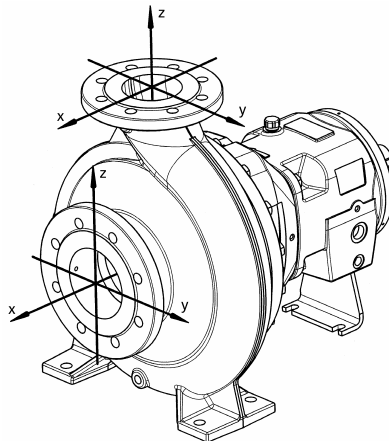
- any component of a force or of a moment shall be limited to 1,4 times the maximum allowable value;
- the actual forces and moments acting on each flange are governed by the following formula:

$$\left(\frac{\sum F_{actual}}{\sum F_{max,allow.}} \right)^2 + \left(\frac{\sum M_{actual}}{\sum M_{max,allow.}} \right)^2 \leq 2$$

die Summenbelastungen $\sum F$ und $\sum M$ sind die arithmetischen Summen für jeden Flansch (Eintritt und Austritt), ohne das Vorzeichen zu berücksichtigen (Saugflansch + Druckflansch).

Dans laquelle les forces total $\sum F$ et $\sum M$ sont la somme arithmétique pour chaque brides (entrée & sortie), valeurs réelles et maximales possibles pour les deux. Valeur ne tenant pas compte des symboles algébriques, au niveau de la pompe. (bride d'entrée et bride de sortie).

in which the total loads $\sum F$ and $\sum M$ are the arithmetic sums for each flange (inlet and outlet), for both the actual and maximum allowable values without taking into account their algebraic sign, at the level of the pump (inlet flange + outlet flange).





VOGEL SPIRALGEHÄUSEPUMPEN
VOGEL POMPES A VOLUTES
VOGEL VOLUTE CASING PUMPS

Bauart
Construction
Design

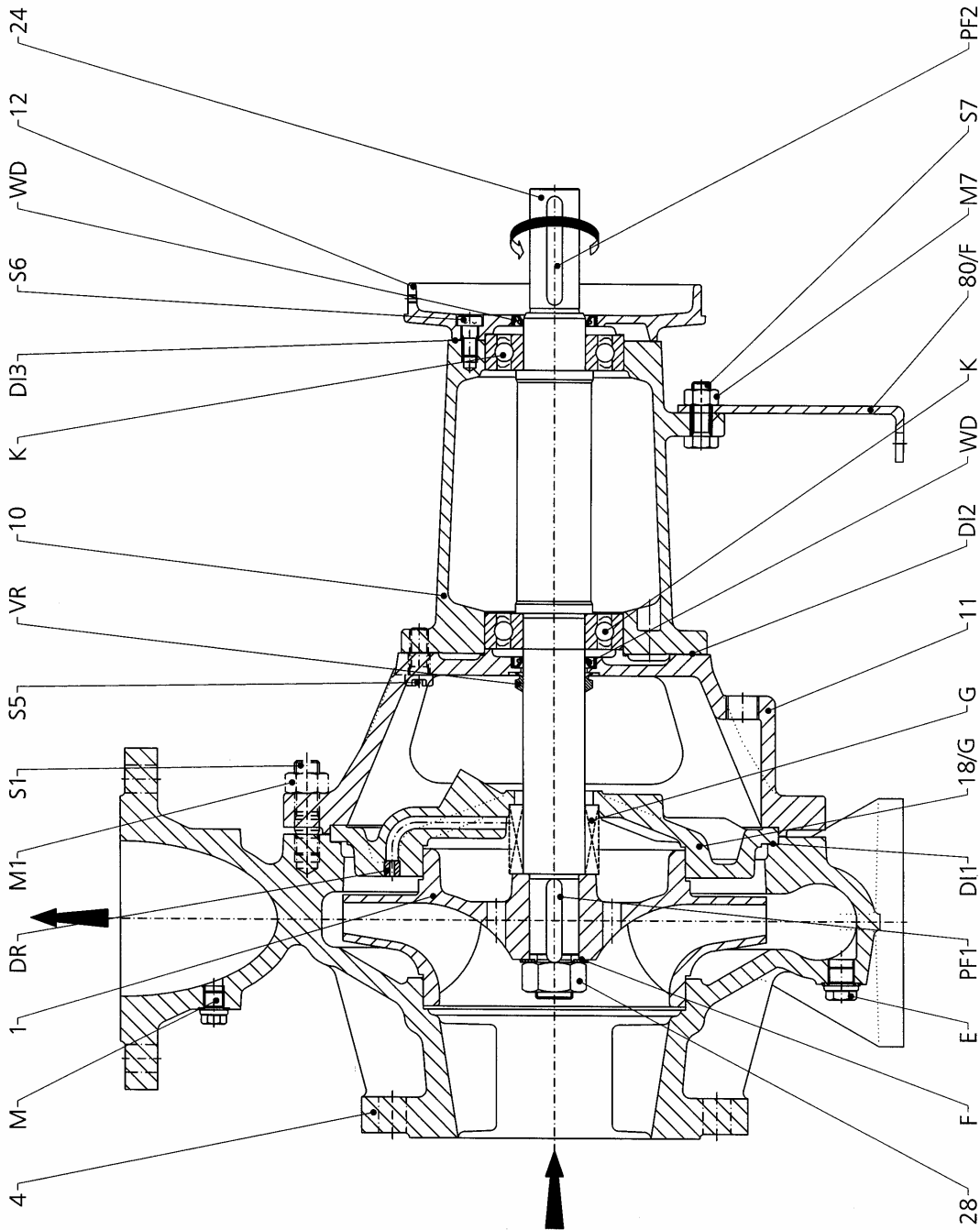


1100.1A702
 Rev.1

Vogel Pumpen

Einzel-Gleitringdichtung, nicht entlastet, Fettschmierung
 Garniture mécanique, exécution simple, non décharge, Lubrification à la graisse
 Single mechanical seal, unbalanced, grease lubrication

Gültige Typen, siehe Rückseite
 Types valables voir revers
 valid types see over leaf



This leaflet is subject to alteration!
 Draw not to scale!
 Certified for construction purposes only when signed!

Modification techniques sans préavis, réservées!
 Graphique non à l'échelle!
 Dimensions valables uniquement revêtues d'une signature!

Technische Änderungen vorbehalten!
 Nicht maßstäblich!
 Maße nur mit Unterschrift verbindlich!

Order no.:	Type:	Date:
Customer:		
Serial no.:	Item no.:	Sign:

Nr.	Teilbezeichnung	Nomenclature	Index of Parts
1	Laufrad	Roue	Impeller
4	Pumpengehäuse	Corps de pompe	Pump casing
10	Lagerträger	Corps de palier	Bearing bracket
11	Laterne	Lanterne	Lantern
12	Lagerdeckel, motorseitig	Couvercle de palier, côté commande	Bearing cover, motor side
18/G	Zwischenwand	fond	Stuffing box cover
24	Welle	Arbre	Shaft
28	Laufradmutter	Ecrou de blocage de roue	Impeller nut
80/F	Stützfuß	Béquille	support foot
D11	Dichtung für Zwischenwand	Joint pour fond	Joint for stuffing box cover
D12	Dichtung für Lagerträger	Joint pour corps de palier	Joint for bearing bracket
D13	Dichtung für Lagerdeckel	Joint pour couvercle de palier	Joint for bearing cover
DR	Drossel	Commande de puissance	Throttle
E	Entleerungsschraube	Bouchon de vidange	Drain plug
F	Federscheibe	Rondelle élastique	Spring washer
G	Gleitringdichtung	Joint mécanique	Mechanical seal
K	Rillenkugellager	Roulement à billes	Radial ball bearing
M	Manometeranschluß	Raccordement de manomètre	Connection for pressure gauge
M1	Sechskantmutter	Écrou à six pans	Hexagonal nut
M7	Sechskantmutter	Écrou à six pans	Hexagonal nut
PF 1	Passfeder für Lauf­rad	Clavette de la roue	Impeller key
PF 2	Passfeder für Motor	Clavette de la moteur	Motor key
S1	Stiftschraube	goujon	Stud bolt
S5	Innensechskantschraube	Vis avec tête à six pans	Hexagonal socket screw
S6	Innensechskantschraube	Vis avec tête à six pans	Hexagonal socket screw
S7	Sechskantschraube	Vis à six pans	Hexagonal screw
VR	V-Ring	Bague en V	V-ring
WD	Radialwellendichtring am Lager	Bague d'étanchéité d'arbre	Radial shaft seal ring at bearing

Gültig für Type:	L 65-315
Valable pour type:	L 80-315
Valid for type:	L 80-400
	L 100-160
	L 100-200
	L 100-250
	L 100-315
	L 100-400
	L 125-200
	L 125-250
	L 125-270
	L 125-315
	L 125-400
	L 150-250
	L 150-315
	L 150-400

**ITT**

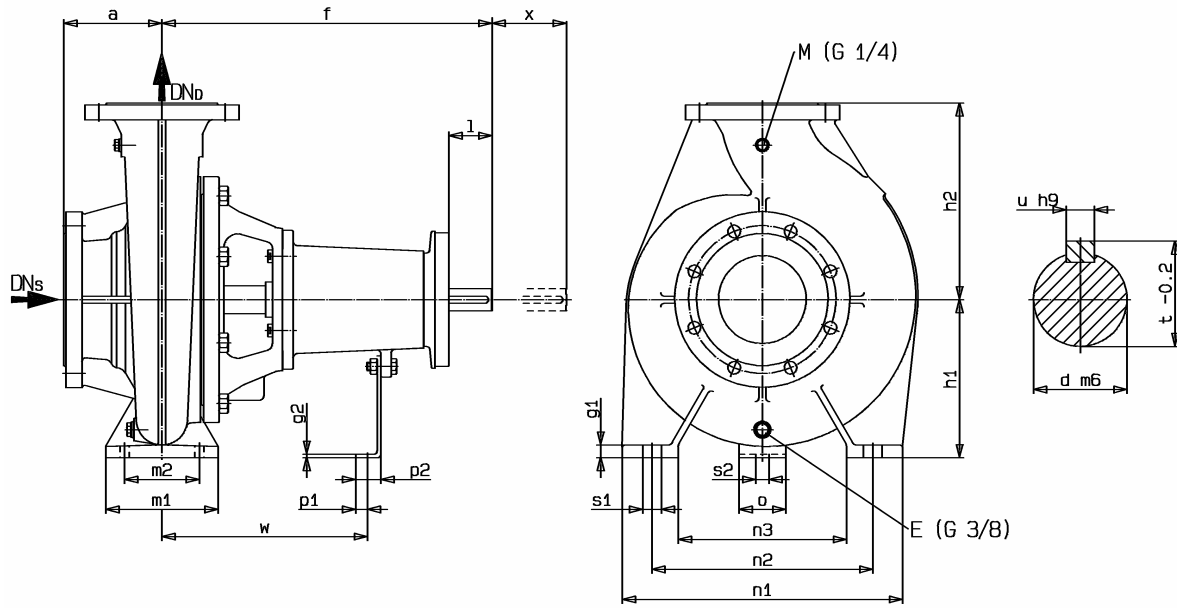
VOGEL SPIRALGEHÄUSEPUMPEN
VOGEL POMPES A VOLUTES
VOGEL VOLUTE CASING PUMPS

Bauart
Construction
Design



1100.1A624
 Rev.2

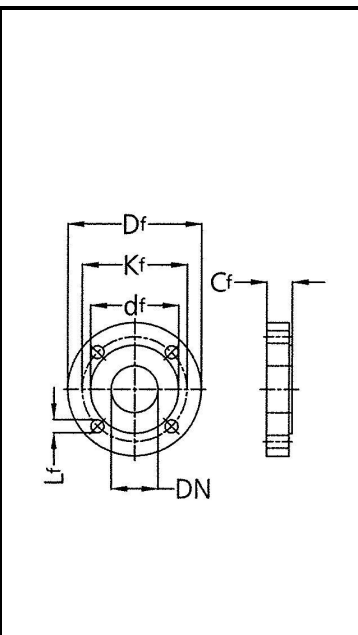
Vogel Pumpen



Pumpentype type de pompes pump typ	DN _s	DN _D	Pumpenmaße pompe dimensions pump dimensions																	
			a	f	w	m ₁	m ₂	p ₁	p ₂	g ₂	x	h ₁	h ₂	g ₁	Øs ₁	Øs ₂	o	n ₁	n ₂	n ₃
			65-315	80	65	125	470	330	160	120	24	39	5	140	225	280	14	18	14	50
80-315	100	80	125	470	330	160	120	24	39	5	140	250	315	16	18	14	50	400	315	240
80-400	100	80	125	530	360	160	120	26	41	6	140	280	355	20	18	14	50	435	355	275
100-160	125	100	125	470	330	160	120	24	39	5	140	225	280	16	18	14	50	360	280	200
100-200	125	100	125	470	330	160	120	24	39	5	140	200	280	18	18	14	50	360	280	200
100-250	125	100	140	470	330	160	120	24	39	5	140	225	280	18	18	14	50	400	315	240
100-315	125	100	140	470	330	160	120	24	39	5	140	250	315	18	18	14	50	400	315	240
100-400	125	100	140	530	360	200	150	26	41	6	140	280	355	20	22	14	50	500	400	300
125-200	150	125	140	530	360	160	120	26	41	6	140	250	315	18	18	14	50	400	315	240
125-250	150	125	140	470	330	160	120	24	39	5	140	250	355	18	18	14	50	400	315	240
125-270	150	125	140	530	360	160	120	26	41	6	140	250	355	18	18	14	50	400	315	240
125-315	150	125	140	530	360	200	150	26	41	6	140	280	355	20	22	14	50	500	400	300
125-400	150	125	140	530	360	200	150	26	41	6	140	315	400	20	22	14	50	500	400	300
150-250	200	150	160	535	365	200	150	26	41	6	140	280	375	20	22	14	50	500	400	300
150-315	200	150	160	530	360	200	150	26	41	6	140	280	400	20	22	14	50	550	450	350
150-400	200	150	160	530	360	200	150	26	41	6	140	315	450	20	22	14	50	550	450	350

Pumpentype Type de pompes pump typ	Lager- träger	Wellenende Bout d'arbre shaft end			
		d	l	u	t
65-315	32 L	32	80	10	35
80-315	32 L	32	80	10	35
80-400	42 L	42	110	12	45
100-160	32 L	32	80	10	35
100-200	32 L	32	80	10	35
100-250	32 L	32	80	10	35
100-315	32 L	32	80	10	35
100-400	42 L	42	110	12	45
125-200	42 L	42	110	12	45
125-250	32 L	32	80	10	35
125-270	42 L	42	110	12	45
125-315	42 L	42	110	12	45
125-400	42 L	42	110	12	45
150-250	42 L	42	110	12	45
150-315	42 L	42	110	12	45
150-400	42 L	42	110	12	45

Flansche bridges flanges					
DIN EN 1092, PN 10					
DN	C _f	d _f	K _f	D _f	L _f
65	19	118	145	185	4xØ19
80	19	132	160	200	8xØ19
100	19	156	180	220	8xØ19
125	19	184	210	250	8xØ19
150	19	211	240	285	8xØ23
200	20	266	295	340	8xØ23
DIN EN 1092, PN 16					
DN	C _f	d _f	K _f	D _f	L _f
65	19	118	145	185	4xØ19
80	19	132	160	200	8xØ19
100	19	156	180	220	8xØ19
125	19	184	210	250	8xØ19
150	19	211	240	285	8xØ23
200	20	266	295	340	12xØ23



This leaflet is subject to alteration!
 Draw not to scale!
 Certified for construction purposes only when signed!

Modification techniques sans préavis, réservées!
 Graphique non à l'échelle!
 Dimensions variables uniquement revêtues d'une signature!

Technische Änderungen vorbehalten!
 Nicht maßstäblich!
 Maße in mm unverbindlich!



VOGEL SPIRALGEHÄUSEPUMPEN
VOGEL POMPES A VOLUTES
VOGEL VOLUTE CASING PUMPS

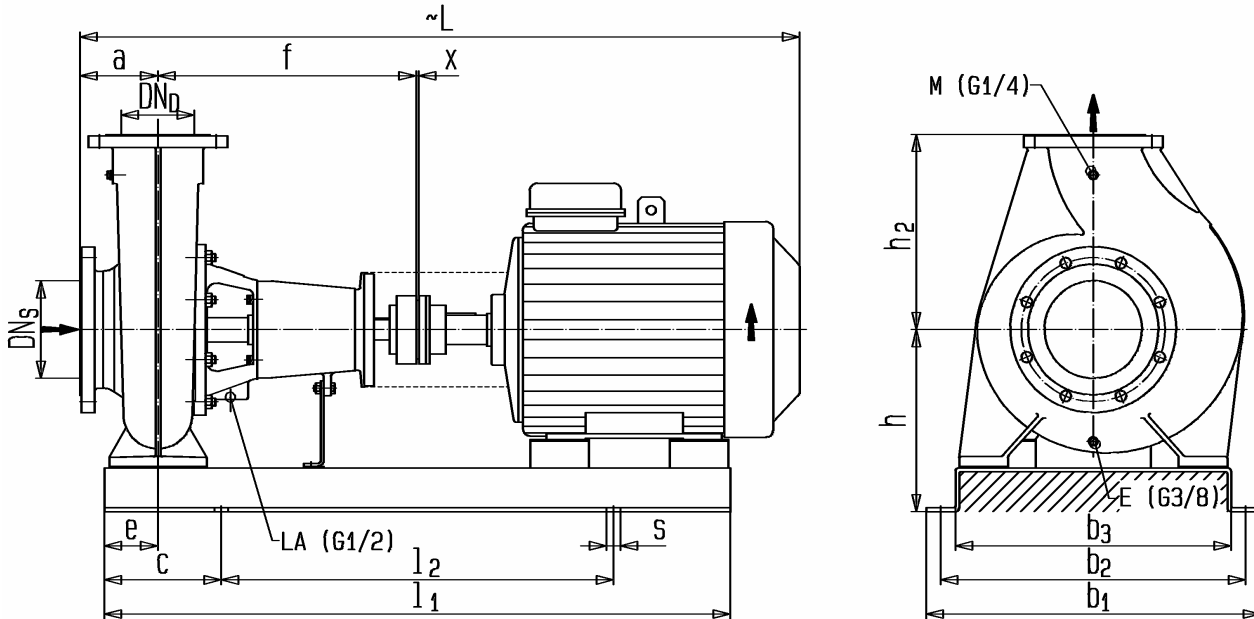
Bauart
Construction
Design

L
2900 min⁻¹

1100.1A680
 Rev.0

Vogel Pumpen

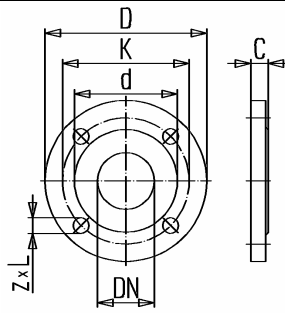
Aggregatsmaßzeichnung ohne Ausbaupkupplung (x=4)
 Dimensions d'agrégat sans entretoise embrayage (x=4)
 Aggregate dimensional drawing without spacer coupling (x=4)



Flansche – Flanges – Bridges

DIN EN 1092, PN 10/16

DN	C	d	K	D	z x L
100	19	156	180	220	8xØ19
125	19	184	210	250	8xØ19
150	19	211	240	285	8xØ23



- M... Manometeranschluß
Raccordement de manomètre
Connection for pressure gauge
 - E... Entleerung
drainage
drainage
 - LA... Leckflüssigkeit
Liquide de fuite
Leakage
- 1) Grundplatte geschweißt
Plaque de base soudé
Base plate welded

Pumpentype Type de pompes Pump typ	Motor Moteur Motor [kW]	DN _S	DN _D	Masse Poids Weight [kg]	Abmessungen [mm] Dimensions [mm] Dimensions [mm]													Grundplatte plaque de base Base plate
					a	f	h ₂	e	h	L	l ₁	l ₂	b ₁	b ₂	b ₃	c	s	
L100-160U...-1852	18,5			255	125	470	280	90	298	1251	1100	700	550	500	440	200	4xM20x300	5065
L100-160U...-2202	22	100	125	292	125	470	280	90	298	1300	1270	830	550	500	440	220	4xM20x300	6045
L100-160U...-3002	30			372	125	470	280	90	298	1420	1270	830	550	500	440	220	4xM20x300	6025
L100-200U...-1852	18,5			262	125	470	280	90	273	1251	1100	700	550	500	440	200	4xM20x300	5020
L100-200U...-2202	22			294	125	470	280	90	273	1300	1100	700	550	500	440	200	4xM20x300	5020
L100-200U...-3002	30	100	125	377	125	470	280	90	273	1420	1270	830	550	500	440	220	4xM20x300	6000
L100-200U...-3702	37			397	125	470	280	90	273	1420	1270	830	550	500	440	220	4xM20x300	6000
L100-200U...-4502	45			514	125	470	280	90	318	1455	1420	940	670	610	550	240	4xM24x400	7025P
L100-250U...-3002	30			399	140	470	280	90	298	1435	1270	830	550	500	440	200	4xM20x300	6025
L100-250U...-3702	37			419	140	470	280	90	298	1435	1270	830	550	500	440	200	4xM20x300	6025
L100-250U...-4502	45			482	140	470	280	90	298	1470	1270	830	550	500	440	220	4xM20x300	6000
L100-250U...-5502	55			607	140	470	280	90	343	1575	1420	940	670	610	550	240	4xM24x400	7025P
L100-250U...-7502	75			756	140	470	280	90	373	1650	1570	1050	740	680	610	260	4xM24x400	8055P
L100-250U...-9002	90			826	140	470	280	90	373	1650	1570	1050	740	680	610	260	4xM24x400	8055P
L125-200U...-3002	30			424	140	530	315	90	323	1495	1270	830	550	500	440	220	4xM20x300	6050
L125-200U...-3702	37			444	140	530	315	90	323	1495	1270	830	550	500	440	220	4xM20x300	6025
L125-200U...-4502	45	125	150	550	140	530	315	90	323	1530	1420	940	670	610	550	240	4xM24x400	7025
L125-200U...-5502	55			616	140	530	315	90	343	1635	1420	940	670	610	550	240	4xM24x400	7000
L125-270U...-5502	55			675	140	530	355	90	373	1635	1600	600	750	700	640	200	4xM16x300	AAE ¹⁾
L125-270U...-7502	75			847	140	530	355	90	423	1710	1600	600	750	700	630	200	4xM20x300	AAE ¹⁾
L125-270U...-9002	90	125	150	917	140	530	355	90	423	1710	1600	600	750	700	630	200	4xM20x300	AAE ¹⁾
L125-270U...-11002	110			1026	140	530	355	90	478	1850	1600	600	870	820	740	200	4xM20x300	BAF ¹⁾
L125-270U...-13202	132			1066	140	530	355	90	478	1850	1600	600	870	820	740	200	4xM20x300	BAF ¹⁾

This leaflet is subject to alteration!
 Draw not to scale!
 Certified for construction purposes only when signed!

Modification techniques sans préavis, réservées!
 Graphique non à l'échelle!
 Dimensions valables uniquement revêtues d'une signature!

Technische Änderungen vorbehalten!
 Nicht maßstäblich!
 Maße in mm unverbindlich!

**ITT**

VOGEL SPIRALGEHÄUSEPUMPEN
VOGEL POMPES A VOLUTES
VOGEL VOLUTE CASING PUMPS

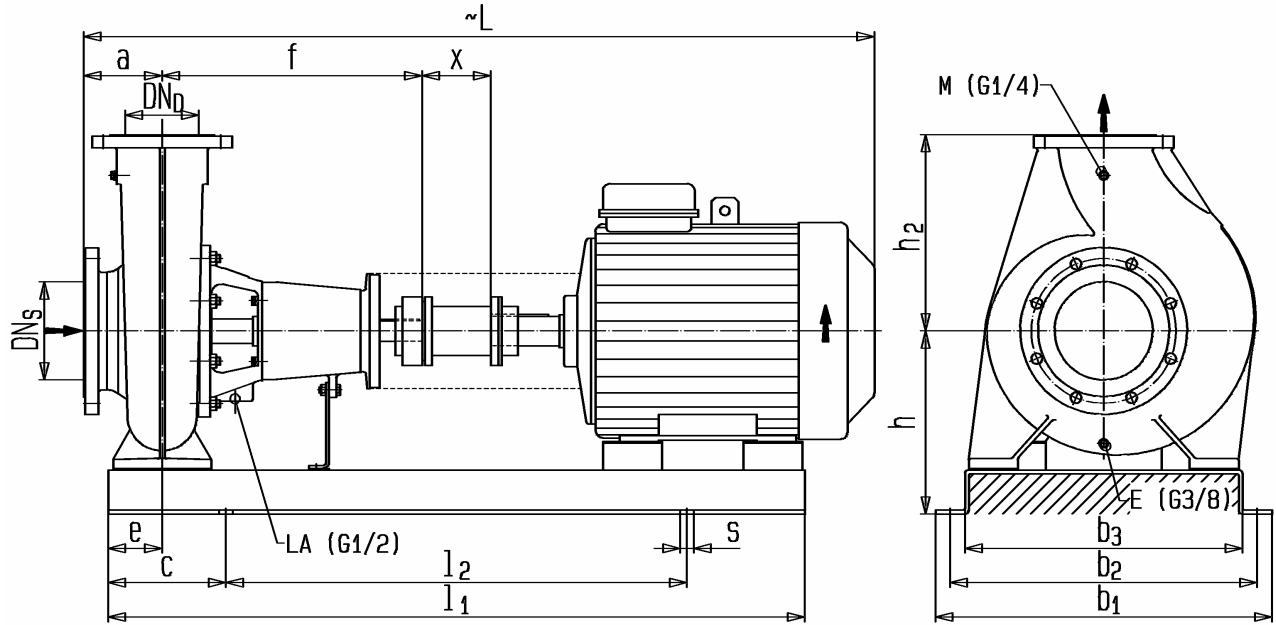
Bauart
Construction
Design

L2900 min⁻¹

1100.1A681
 Rev.0

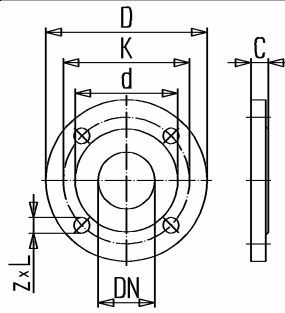
Vogel Pumpen

Aggregatsmaßzeichnung mit Ausbakupplung (x=140)
Dimensions d'agrégat avec l'entretoise embrayage (x=140)
Aggregate dimensional drawing with spacer coupling (x=140)

**Flansche – Flanges – Bridges**

DIN EN 1092, PN 10/16

DN	C	d	K	D	z x L
100	19	156	180	220	8xØ19
125	19	184	210	250	8xØ19
150	19	211	240	285	8xØ23



- M... Manometeranschluß
Raccordement de manomètre
Connection for pressure gauge
- E... Entleerung
drainage
drainage
- LA... Leckflüssigkeit
Liquide de fuite
Leakage
- 1) Grundplatte geschweißt
Plaque de base soudé
Base plate welded

Pumpentype Type de pompes Pump typ	Motor Moteur Motor [kW]	DN _S	DN _D	Masse Poids Weight [kg]	Abmessungen [mm] Dimensions [mm] Dimensions [mm]													Grundplatte plaque de base Base plate
					a	f	h ₂	e	h	L	l ₁	l ₂	b ₁	b ₂	b ₃	c	s	
L100-160U...-1852	18,5			259	125	470	280	90	298	1391	1270	830	550	500	440	220	4xM20x300	6065
L100-160U...-2202	22	100	125	298	125	470	280	90	298	1440	1270	830	550	500	440	220	4xM20x300	6045
L100-160U...-3002	30			381	125	470	280	90	318	1560	1420	940	670	610	550	240	4xM24x400	7025
L100-200U...-1852	18,5			266	125	470	280	90	273	1391	1270	830	550	500	440	220	4xM20x300	6020
L100-200U...-2202	22			300	125	470	280	90	273	1440	1270	830	550	500	440	220	4xM20x300	6020
L100-200U...-3002	30	100	125	386	125	470	280	90	293	1560	1420	940	670	610	550	240	4xM24x400	7000
L100-200U...-3702	37			406	125	470	280	90	293	1560	1420	940	670	610	550	240	4xM24x400	7000
L100-200U...-4502	45			523	125	470	280	90	318	1595	1420	940	670	610	550	240	4xM24x400	7025P
L100-250U...-3002	30			408	140	470	280	90	318	1575	1420	940	670	610	550	240	4xM24x400	7025
L100-250U...-3702	37			428	140	470	280	90	318	1575	1420	940	670	610	550	240	4xM24x400	7025
L100-250U...-4502	45	100	125	491	140	470	280	90	318	1610	1420	940	670	610	550	240	4xM24x400	7000
L100-250U...-5502	55			622	140	470	280	90	343	1715	1680	1050	740	680	610	260	4xM24x400	9025P
L100-250U...-7502	75			771	140	470	280	90	343	1790	1420	940	670	610	550	240	4xM24x400	7025P
L100-250U...-9002	90			841	140	470	280	90	373	1790	1570	1050	740	680	610	260	4xM24x400	8055P
L125-200U...-3002	30			433	140	530	315	90	343	1635	1420	940	670	610	550	240	4xM24x400	7050
L125-200U...-3702	37			453	140	530	315	90	343	1635	1420	940	670	610	550	240	4xM24x400	7025
L125-200U...-4502	45	125	150	559	140	530	315	90	343	1670	1420	940	670	610	550	240	4xM24x400	7025
L125-200U...-5502	55			628	140	530	315	90	343	1775	1570	1050	740	680	610	260	4xM24x400	8000
L125-270U...-5502	55			690	140	530	355	90	373	1775	1600	600	750	700	640	200	4xM16x300	AA ¹⁾
L125-270U...-7502	75			862	140	530	355	90	423	1850	1700	650	750	700	630	200	4xM20x300	ABE ¹⁾
L125-270U...-9002	90	125	150	932	140	530	355	90	423	1850	1700	650	750	700	630	200	4xM20x300	ABE ¹⁾
L125-270U...-11002	110			1041	140	530	355	90	478	1990	1700	650	870	820	740	200	4xM20x300	BBF ¹⁾
L125-270U...-13202	132			1087	140	530	355	90	478	1990	1700	650	870	820	740	200	4xM20x300	BBF ¹⁾

This leaflet is subject to alteration!
 Draw not to scale.
 Certified for construction purposes only when signed!

Modification techniques sans préavis, réservées!
 Graphique non à l'échelle!
 Dimensions variables uniquement revêtues d'une signature!

Technische Änderungen vorbehalten!
 Nicht maßstäblich!
 Maße in mm unverbindlich!

**ITT**

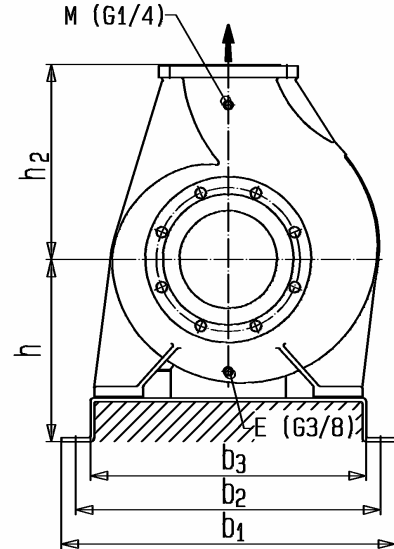
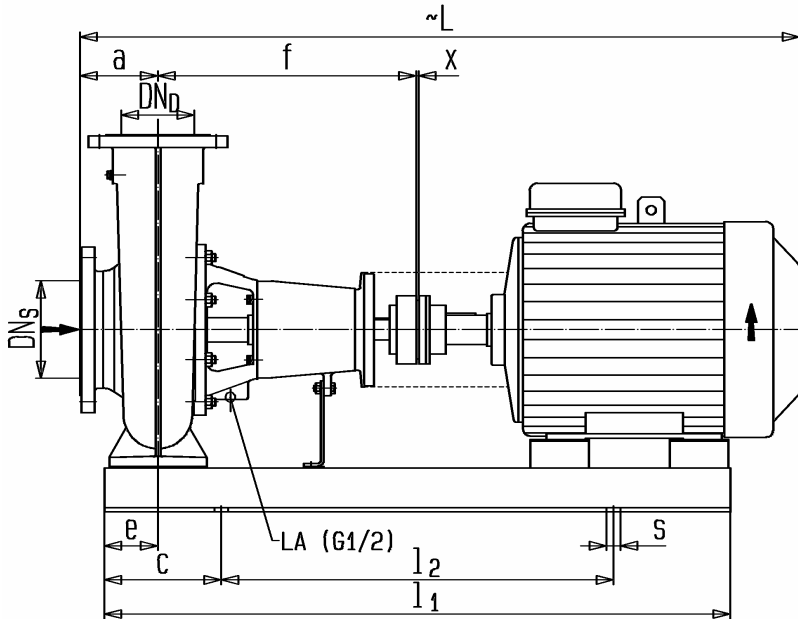
VOGEL SPIRALGEHÄUSEPUMPEN
VOGEL POMPES A VOLUTES
VOGEL VOLUTE CASING PUMPS

Bauart
Construction
Design

L1450 min⁻¹1100.1A682
Rev.0

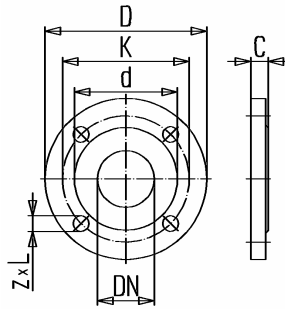
Vogel Pumpen

Aggregatsmaßzeichnung ohne Ausbaupkupplung (x=4)
 Dimensions d'agrégat sans entretoise embrayage (x=4)
 Aggregate dimensional drawing without spacer coupling (x=4)

**Flansche – Flanges – Bridges**

DIN EN 1092, PN 10/16

DN	C	d	K	D	z x L
65	19	118	145	185	4xØ19
80	19	132	160	200	8xØ19
100	19	156	180	220	8xØ19
125	19	184	210	250	8xØ19



- M... Manometeranschluß
Raccordement de manomètre
Connection for pressure gauge
- E... Entleerung
drainage
drainage
- LA... Leckflüssigkeit
Liquide de fuite
Leakage

Pumpentype Type de pompes Pump typ	Motor Moteur Motor [kW]	DN _S	DN _D	Masse Poids Weight [kg]	Abmessungen [mm] Dimensions [mm] Dimensions [mm]													Grundplatte Plaque de base Base plate
					a	f	h ₂	e	h	L	l ₁	l ₂	b ₁	b ₂	b ₃	c	s	
L65-315U...-404	4			186	125	470	280	90	298	979	1020	660	550	500	440	180	4xM20x300	4113
L65-315U...-554	5,5			212	125	470	280	90	298	1058	1020	660	550	500	440	180	4xM20x300	4093
L65-315U...-754	7,5	65	80	223	125	470	280	90	298	1096	1020	660	550	500	440	180	4xM20x300	4093
L65-315U...-1104A	11			263	125	470	280	90	298	1207	1100	700	550	500	440	200	4xM20x300	5065
L65-315U...-1104	11			263	125	470	280	90	298	1207	1100	700	550	500	440	200	4xM20x300	5065
L80-315U...-554	5,5			215	125	470	315	90	323	1096	1020	660	550	500	440	180	4xM20x300	4118
L80-315U...-754	7,5			242	125	470	315	90	323	1096	1020	660	550	500	440	180	4xM20x300	4118
L80-315U...-1104	11	80	100	284	125	470	315	90	323	1207	1100	700	550	500	440	200	4xM20x300	5090
L80-315U...-1504	15			304	125	470	315	90	323	1251	1100	700	550	500	440	200	4xM20x300	5090
L80-400U...-1854	18,5			389	125	530	355	90	353	1360	1270	830	550	500	440	220	4xM20x300	6100
L80-400U...-2204	22	80	100	399	125	530	355	90	353	1360	1270	830	550	500	440	220	4xM20x300	6100
L80-400U...-3004	30			491	125	530	355	90	353	1480	1270	830	550	500	440	220	4xM20x300	6080
L100-160U...-224	2,2			145	125	470	280	90	298	971	1020	660	550	500	440	180	4xM20x300	4125
L100-160U...-304	3	100	125	146	125	470	280	90	298	971	1020	660	550	500	440	180	4xM20x300	4125
L100-160U...-404	4			153	125	470	280	90	298	979	1020	660	550	500	440	180	4xM20x300	4113
L100-200U...-224	2,2			157	125	470	280	90	273	979	1020	660	550	500	440	180	4xM20x300	4100
L100-200U...-304	3			141	125	470	280	90	273	1058	1020	660	550	500	440	180	4xM20x300	4100
L100-200U...-404	4	100	125	163	125	470	280	90	273	979	1020	660	550	500	440	180	4xM20x300	4088
L100-200U...-554	5,5			189	125	470	280	90	273	1058	1020	660	550	500	440	180	4xM20x300	4068
L100-250U...-404	4			180	140	470	280	90	298	994	1020	660	550	500	440	180	4xM20x300	4113
L100-250U...-554	5,5			206	140	470	280	90	298	1073	1020	660	550	500	440	180	4xM20x300	4093
L100-250U...-754	7,5	100	125	217	140	470	280	90	298	1111	1020	660	550	500	440	180	4xM20x300	4093
L100-250U...-1104	11			257	140	470	280	90	298	1222	1100	700	550	500	440	200	4xM20x300	5065

This leaflet is subject to alteration!
 Draw not to scale!
 Certified for construction purposes only when signed!

Modification techniques sans préavis, réservées!
 Graphique non à l'échelle!
 Dimensions valables uniquement revêtues d'une signature!

Technische Änderungen vorbehalten!
 Nicht maßstäblich!
 Maße in mm unverbindlich!

**ITT**

VOGEL SPIRALGEHÄUSEPUMPEN
VOGEL POMPES A VOLUTES
VOGEL VOLUTE CASING PUMPS

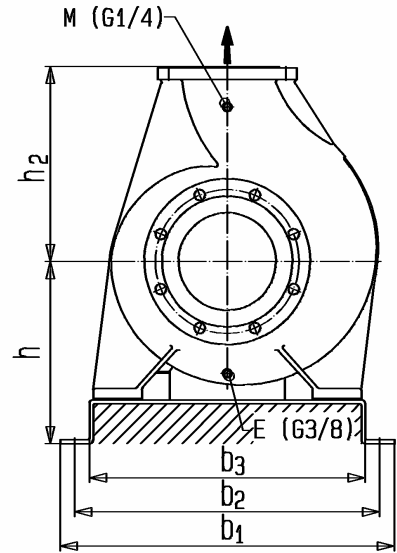
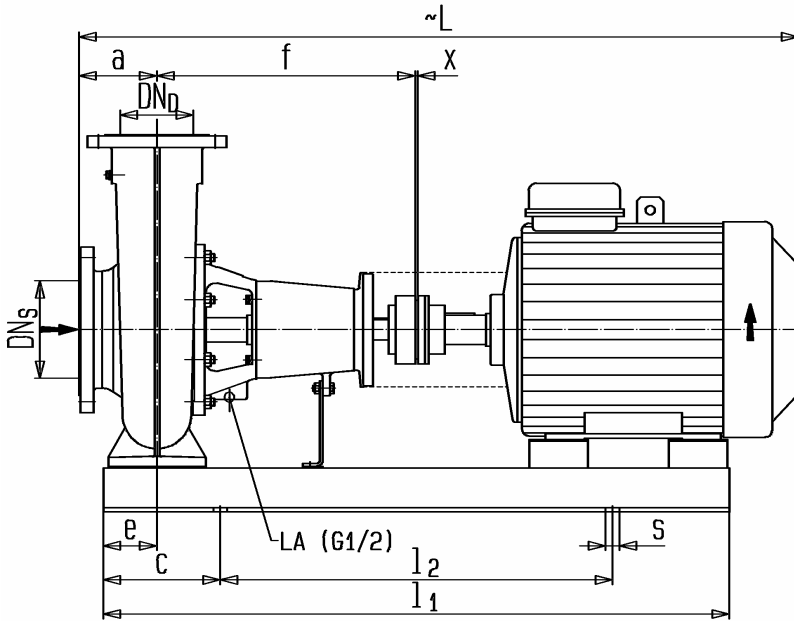
Bauart
Construction
Design

L1450 min⁻¹

1100.1A683
 Rev.0

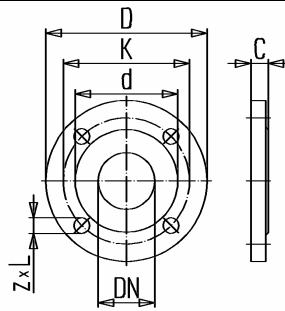
Vogel Pumpen

Aggregatsmaßzeichnung ohne Ausbaupkuplung (x=4)
 Dimensions d'agrégat sans entretoise embrayage (x=4)
 Aggregate dimensional drawing without spacer coupling (x=4)

**Flansche - Flanges - Bridges**

DIN EN 1092, PN 10/16

DN	C	d	K	D	z x L
100	19	156	180	220	8xØ19
125	19	184	210	250	8xØ19
150	19	211	240	285	8xØ23



- M... Manometeranschluß
Raccordement de manomètre
Connection for pressure gauge
- E... Entleerung
drainage
drainage
- LA... Leckflüssigkeit
Liquide de fuite
Leakage

This leaflet is subject to alteration!
 Draw not to scale!
 Certified for construction purposes only when signed!

Modification techniques sans préavis, réservées!
 Graphique non à l'échelle!
 Dimensions variables uniquement revêtues d'une signature!

Technische Änderungen vorbehalten!
 Nicht maßstäblich!
 Maße in mm unverbindlich!

Pumpentype Type de pompes Pump typ	Motor Moteur Motor [kW]	DN _S	DN _D	Masse Poids Weight [kg]	Abmessungen [mm] Dimensions [mm] Dimensions [mm]													Grundplatte plaque de base Base plate
					a	f	h ₂	e	h	L	l ₁	l ₂	b ₁	b ₂	b ₃	c	s	
L100-315U...-1104	11	100	125	286	140	470	315	90	323	1222	1100	700	550	500	440	200	4xM20x300	5090
L100-315U...-1504	15			306	140	470	315	90	323	1266	1100	700	550	500	440	200	4xM20x300	5090
L100-315U...-1854	18,5			343	140	470	315	90	323	1315	1100	700	550	500	440	200	4xM20x300	5070
L100-315U...-2204	22			358	140	470	315	90	323	1315	1270	830	550	500	440	220	4xM20x300	6070
L100-400U...-2204	22	100	125	448	140	530	355	110	373	1375	1420	940	670	610	550	240	4xM24x400	7100
L100-400U...-3004	30			540	140	530	355	110	373	1495	1420	940	670	610	550	240	4xM24x400	7080
L100-400U...-3704	37			595	140	530	355	110	373	1535	1420	940	670	610	550	240	4xM24x400	7055
L100-400U...-4504	45			620	140	530	355	110	373	1560	1420	940	670	610	550	240	4xM24x400	7055
L125-200U...-404	4	125	150	201	140	530	315	90	323	1054	1020	660	550	500	440	180	4xM20x300	4138
L125-200U...-554	5,5			230	140	530	315	90	323	1133	1100	700	550	500	440	200	4xM20x300	5118
L125-200U...-754	7,5			241	140	530	315	90	323	1171	1100	700	550	500	440	200	4xM20x300	5118
L125-250U...-754	7,5			241	140	470	355	90	323	1111	1020	660	550	500	440	180	4xM20x300	4118
L125-250U...-1104	11	125	150	283	140	470	355	90	323	1222	1100	700	550	500	440	200	4xM20x300	5090
L125-250U...-1504	15			303	140	470	355	90	323	1266	1100	700	550	500	440	200	4xM20x300	5090
L125-250U...-1854	18,5			340	140	470	355	90	323	1315	1100	700	550	500	440	200	4xM20x300	5070
L125-270U...-754	7,5			260	140	530	355	90	323	1171	1100	700	550	500	440	200	4xM20x300	5118
L125-270U...-1104	11	125	150	305	140	530	355	90	323	1282	1270	830	550	500	440	220	4xM20x300	6090
L125-270U...-1504	15			325	140	530	355	90	323	1326	1270	830	550	500	440	220	4xM20x300	6090
L125-315U...-1854	18,5			419	140	530	355	110	373	1375	1420	940	670	610	550	240	4xM24x400	7100
L125-315U...-2204	22			429	140	530	355	110	373	1375	1420	940	670	610	550	240	4xM24x400	7100
L125-315U...-3004	30	125	150	521	140	530	355	110	373	1495	1420	940	670	610	550	240	4xM24x400	7080
L125-315U...-3704	37			576	140	530	355	110	373	1535	1420	940	670	610	550	240	4xM24x400	7055

**ITT**

VOGEL SPIRALGEHÄUSEPUMPEN
VOGEL POMPES A VOLUTES
VOGEL VOLUTE CASING PUMPS

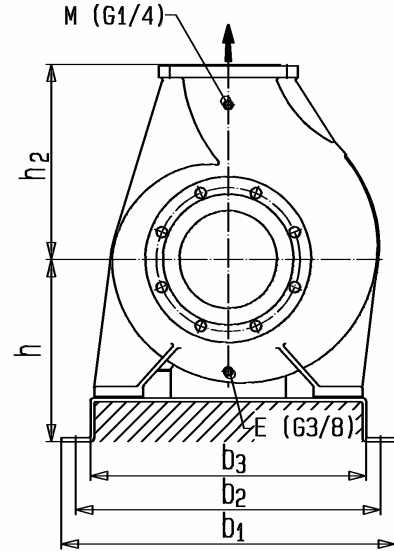
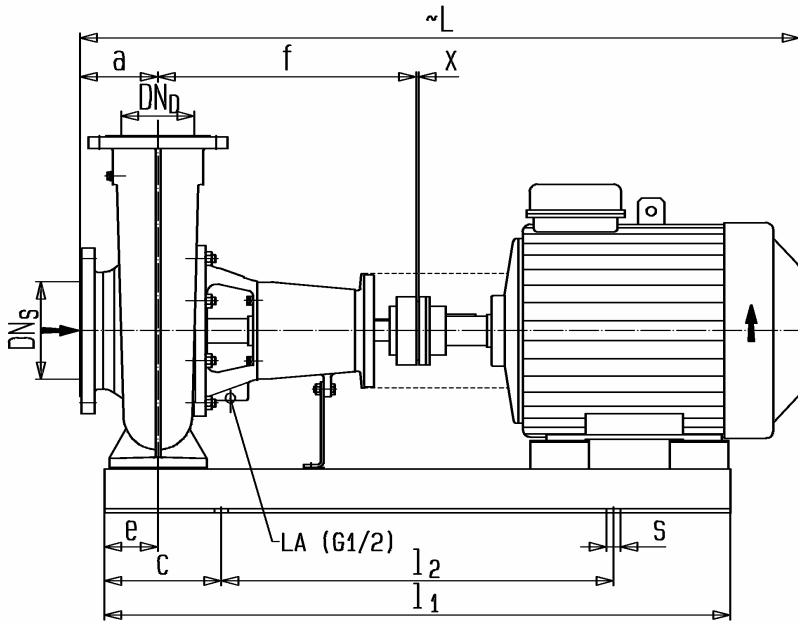
Bauart
Construction
Design

L
1450 min⁻¹

1100.1A684
 Rev.0

Vogel Pumpen

Aggregatsmaßzeichnung ohne Ausbaupkupplung (x=4)
 Dimensions d'agrégat sans entretoise embrayage (x=4)
 Aggregate dimensional drawing without spacer coupling (x=4)



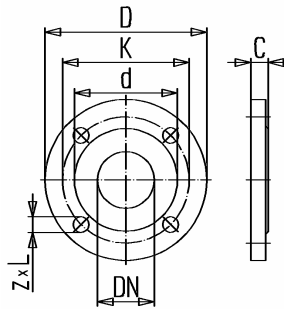
Flansche – Flanges – Bridges

DIN EN 1092, PN 10

DN	C	d	K	D	z x L
125	19	184	210	250	8xØ19
150	19	211	240	285	8xØ23
200	20	266	295	340	8xØ23

DIN EN 1092, PN 16

DN	C	d	K	D	z x L
125	19	184	210	250	8xØ19
150	19	211	240	285	8xØ23
200	20	266	295	340	12xØ23



- M... Manometeranschluß
Raccordement de manomètre
Connection for pressure gauge
- E... Entleerung
drainage
drainage
- LA... Leckflüssigkeit
Liquide de fuite
Leakage

Pumpentype Type de pompes Pump typ	Motor Moteur Motor [kW]	DN _S	DN _D	Masse Poids Weight [kg]	Abmessungen [mm] Dimensions [mm] Dimensions [mm]													Grundplatte plaque de base Base plate
					a	f	h ₂	e	h	L	l ₁	l ₂	b ₁	b ₂	b ₃	c	s	
					L125-400U...-2204	22	125	150	426	140	530	400	110	408	1375	1420	940	
L125-400U...-3004	30	520	140	530	400	110			408	1495	1420	940	670	610	550	240	4xM24x400	7115
L125-400U...-3704	37	619	140	530	400	110			408	1535	1420	940	670	610	550	240	4xM24x400	7090
L125-400U...-4504	45	644	140	530	400	110			408	1560	1420	940	670	610	550	240	4xM24x400	7090
L125-400U...-5504	55	735	140	530	400	110			408	1635	1420	940	670	610	550	240	4xM24x400	7065
L150-250U...-1504	15	150	200	385	160	535	375	110	373	1351	1420	940	670	610	550	240	4xM24x400	7120
L150-250U...-1854	18,5			423	160	535	375	110	373	1400	1420	940	670	610	550	240	4xM24x400	7100
L150-250U...-2204	22			433	160	535	375	110	373	1400	1420	940	670	610	550	240	4xM24x400	7100
L150-315U...-3004	30			544	160	530	400	110	373	1515	1420	940	670	610	550	240	4xM24x400	7080
L150-315U...-3704	37			599	160	530	400	110	373	1555	1420	940	670	610	550	240	4xM24x400	7055
L150-315U...-4504	45	624	160	530	400	110	373	1580	1420	940	670	610	550	240	4xM24x400	7055		
L150-315U...-5504	55	704	160	530	400	110	373	1655	1420	940	670	610	550	240	4xM24x400	7030		
L150-400U...-3004	30	150	200	581	160	530	450	110	408	1515	1420	940	670	610	550	240	4xM24x400	7115
L150-400U...-3704	37			641	160	530	450	110	408	1555	1420	940	670	610	550	240	4xM24x400	7090
L150-400U...-4504	45			666	160	530	450	110	408	1580	1420	940	670	610	550	240	4xM24x400	7090
L150-400U...-5504	55			773	160	530	450	110	408	1655	1570	1050	740	680	610	260	4xM24x400	8065
L150-400U...-7504	75			906	160	530	450	110	408	1730	1570	1050	740	680	610	260	4xM24x400	8035
L150-400U...-9004	90	972	160	530	450	110	408	1730	1570	1050	740	680	610	260	4xM24x400	8035		

Engineered for life

This leaflet is subject to alteration!
 Draw not to scale!
 Certified for construction purposes only when signed!

Modification techniques sans préavis, réservées!
 Graphique non à l'échelle!
 Dimensions valables uniquement revêtues d'une signature!

Technische Änderungen vorbehalten!
 Nicht maßstäblich!
 Maße in mm unverbindlich!



ITT

VOGEL SPIRALGEHÄUSEPUMPEN
VOGEL POMPES A VOLUTES
VOGEL VOLUTE CASING PUMPS

Bauart
Construction
Design

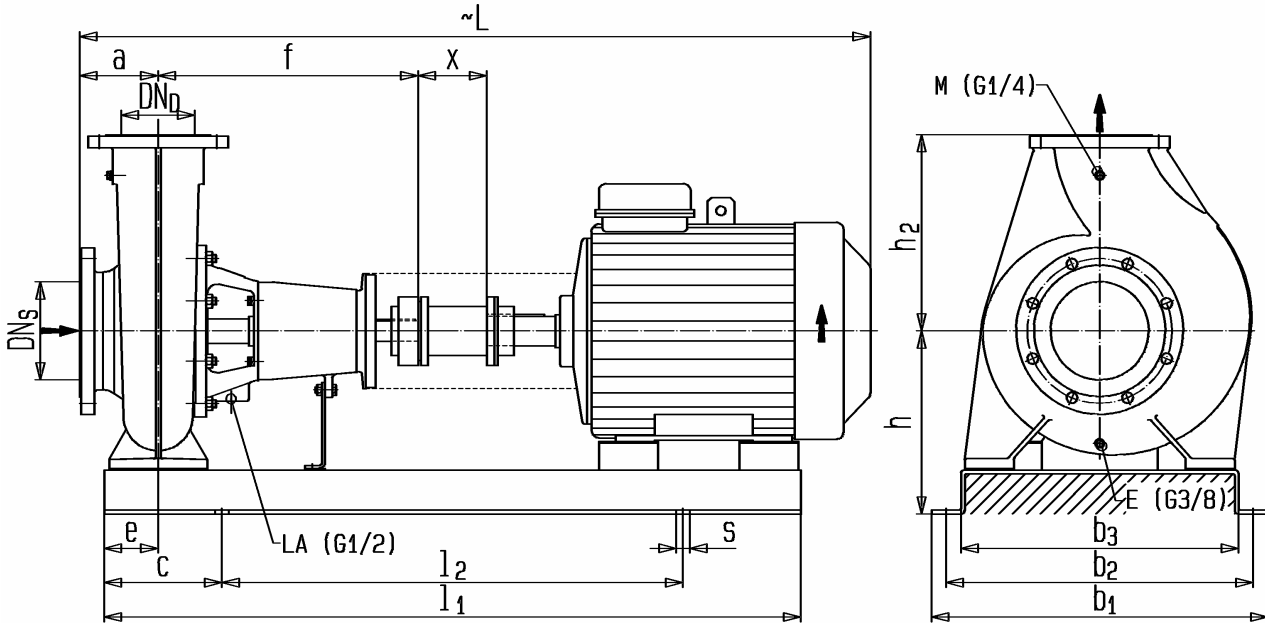
L

1450 min⁻¹

1100.1A685
 Rev.0

Vogel Pumpen

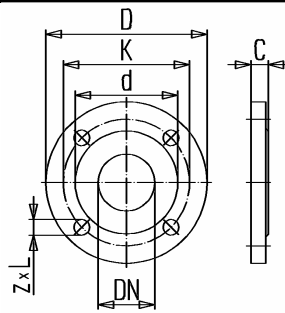
Aggregatsmaßzeichnung mit Ausbakupplung (x=140)
Dimensions d'agrégat avec l'entretoise embrayage (x=140)
Aggregate dimensional drawing with spacer coupling(x=140)



Flansche - Flanges - Bridges

DIN EN 1092, PN 10/16

DN	C	d	K	D	z x L
65	19	118	145	185	4xØ19
80	19	132	160	200	8xØ19
100	19	156	180	220	8xØ19
125	19	184	210	250	8xØ19



- M... Manometeranschluß
Raccordement de manomètre
Connection for pressure gauge
- E... Entleerung
drainage
drainage
- LA... Leckflüssigkeit
Liquide de fuite
Leakage

Pumpentype Type de pompes Pump typ	Motor Moteur Motor [kW]	DN _S	DN _D	Masse Poids Weight [kg]	Abmessungen [mm] Dimensions [mm] Dimensions [mm]															Grundplatte plaque de base Base plate
					a	f	h ₂	e	h	L	l ₁	l ₂	b ₁	b ₂	b ₃	c	s			
L65-315U...-404	4			190	125	470	280	90	298	1119	1020	660	550	500	440	180	4xM20x300	4113		
L65-315U...-554	5,5			216	125	470	280	90	298	1198	1100	700	550	500	440	200	4xM20x300	5093		
L65-315U...-754	7,5	65	80	227	125	470	280	90	298	1236	1100	700	550	500	440	200	4xM20x300	5093		
L65-315U...-1104A	11			267	125	470	280	90	298	1347	1270	830	550	500	440	220	4xM20x300	6065		
L65-315U...-1104	11			267	125	470	280	90	298	1347	1270	830	550	500	440	220	4xM20x300	6065		
L80-315U...-554	5,5			219	125	470	315	90	323	1198	1100	700	550	500	440	200	4xM20x300	5118		
L80-315U...-754	7,5	80	100	246	125	470	315	90	323	1236	1100	700	550	500	440	200	4xM20x300	5118		
L80-315U...-1104	11			288	125	470	315	90	323	1347	1270	830	550	500	440	220	4xM20x300	6090		
L80-315U...-1504	15			308	125	470	315	90	323	1391	1270	830	550	500	440	220	4xM20x300	6090		
L80-400U...-1854	18,5			395	125	530	355	90	373	1500	1420	940	670	610	550	240	4xM24x400	7100		
L80-400U...-2204	22	80	100	405	125	530	355	90	373	1500	1420	940	670	610	550	240	4xM24x400	7100		
L80-400U...-3004	30			500	125	530	355	90	373	1620	1420	940	670	610	550	240	4xM24x400	7080		
L100-160U...-224	2,2			149	125	470	280	90	298	1111	1020	660	550	500	440	180	4xM20x300	4125		
L100-160U...-304	3	100	125	150	125	470	280	90	298	1111	1020	660	550	500	440	180	4xM20x300	4125		
L100-160U...-404	4			157	125	470	280	90	298	1119	1020	660	550	500	440	180	4xM20x300	4113		
L100-200U...-224	2,2			161	125	470	280	90	253	1111	1020	660	550	500	440	180	4xM20x300	4100		
L100-200U...-304	3	100	125	145	125	470	280	90	253	1111	1020	660	550	500	440	180	4xM20x300	4100		
L100-200U...-404	4			167	125	470	280	90	273	1119	1020	660	550	500	440	180	4xM20x300	4088		
L100-200U...-554	5,5			193	125	470	280	90	273	1198	1100	700	550	500	440	200	4xM20x300	5068		
L100-250U...-404	4			184	140	470	280	90	298	1134	1100	700	550	500	440	200	4xM20x300	5113		
L100-250U...-554	5,5	100	125	210	140	470	280	90	298	1213	1100	700	550	500	440	200	4xM20x300	5093		
L100-250U...-754	7,5			221	140	470	280	90	298	1251	1100	700	550	500	440	200	4xM20x300	5093		
L100-250U...-1104	11			261	140	470	280	90	298	1362	1270	830	550	500	440	220	4xM20x300	6065		

This leaflet is subject to alteration!
 Draw not to scale.
 Certified for construction purposes only when signed!

Modification techniques sans préavis, réservées!
 Graphique non à l'échelle!
 Dimensions valables uniquement revêtues d'une signature!

Technische Änderungen vorbehalten!
 Nicht maßstäblich!
 Maße in mm unverbindlich!

**ITT**

VOGEL SPIRALGEHÄUSEPUMPEN
VOGEL POMPES A VOLUTES
VOGEL VOLUTE CASING PUMPS

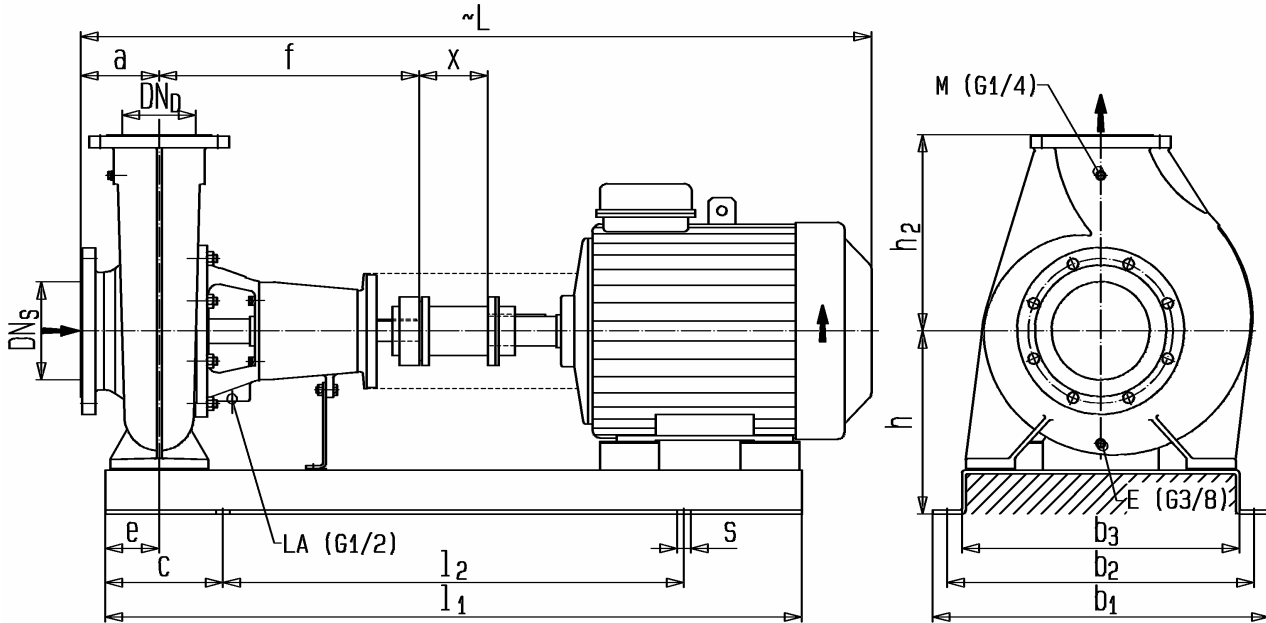
Bauart
Construction
Design

L
1450 min⁻¹

1100.1A686
 Rev.0

Vogel Pumpen

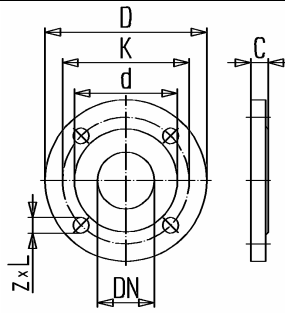
Aggregatsmaßzeichnung mit Ausbalkkupplung (x=140)
 Dimensions d'agrégat avec l'entretoise embrayage (x=140)
 Aggregate dimensional drawing with spacer coupling(x=140)



Flansche – Flanges – Bridges

DIN EN 1092, PN 10/16

DN	C	d	K	D	z x L
100	19	156	180	220	8xØ19
125	19	184	210	250	8xØ19
150	19	211	240	285	8xØ23



- M... Manometeranschluß
Raccordement de manomètre
Connection for pressure gauge
- E... Entleerung
drainage
drainage
- LA... Leckflüssigkeit
Liquide de fuite
Leakage

Pumpentype Type de pompes Pump typ	Motor Moteur Motor [kW]	DN _S	DN _D	Masse Poids Weight [kg]	Abmessungen [mm] Dimensions [mm] Dimensions [mm]															Grundplatte plaque de base Base plate
					a	f	h ₂	e	h	L	l ₁	l ₂	b ₁	b ₂	b ₃	c	s			
					L100-315U...-1104	11	100	125	290	140	470	315	90	323	1362	1270	830	550	500	
L100-315U...-1504	15	310	140	470	315	90			323	1406	1270	830	550	500	440	220	4xM20x300	6090		
L100-315U...-1854	18,5	349	140	470	315	90			323	1455	1270	830	550	500	440	220	4xM20x300	6070		
L100-315U...-2204	22	100	125	364	140	470	315	90	323	1455	1270	830	550	500	440	220	4xM20x300	6070		
L100-400U...-2204	22			454	140	530	355	90	373	1515	1420	940	670	610	550	240	4xM24x400	7100		
L100-400U...-3004	30			549	140	530	355	90	373	1635	1420	940	670	610	550	240	4xM24x400	7080		
L100-400U...-3704	37	100	125	607	140	530	355	90	373	1675	1420	940	670	610	550	240	4xM24x400	7055		
L100-400U...-4504	45			632	140	530	355	90	373	1700	1420	940	670	610	550	240	4xM24x400	7055		
L125-200U...-404	4			125	150	205	140	530	315	90	323	1194	1100	700	550	500	440	220	4xM20x300	5138
L125-200U...-554	5,5	234	140			530	315	90	323	1273	1270	830	550	500	440	220	4xM20x300	6118		
L125-200U...-754	7,5	245	140			530	315	90	323	1311	1270	830	550	500	440	220	4xM20x300	6118		
L125-250U...-754	7,5	125	150	245	140	470	355	90	323	1251	1100	700	550	500	440	220	4xM20x300	5118		
L125-250U...-1104	11			287	140	470	355	90	323	1362	1270	830	550	500	440	220	4xM20x300	6090		
L125-250U...-1504	15			307	140	470	355	90	323	1406	1270	830	550	500	440	220	4xM20x300	6090		
L125-250U...-1854	18,5	125	150	346	140	470	355	90	323	1455	1270	830	550	500	440	220	4xM20x300	6070		
L125-270U...-754	7,5			264	140	530	355	90	323	1311	1270	830	550	500	440	220	4xM20x300	6118		
L125-270U...-1104	11			309	140	530	355	90	323	1422	1270	830	550	500	440	220	4xM20x300	6090		
L125-270U...-1504	15	125	150	329	140	530	355	90	323	1466	1270	830	550	500	440	220	4xM20x300	6090		
L125-315U...-1854	18,5			425	140	530	355	110	373	1515	1420	940	670	610	550	240	4xM24x400	7100		
L125-315U...-2204	22			435	140	530	355	110	373	1515	1420	940	670	610	550	240	4xM24x400	7100		
L125-315U...-3004	30	125	150	530	140	530	355	110	373	1635	1420	940	670	610	550	240	4xM24x400	7080		
L125-315U...-3704	37			588	140	530	355	110	373	1675	1420	940	670	610	550	240	4xM24x400	7055		

This leaflet is subject to alteration!
 Draw not to scale!
 Certified for construction purposes only when signed!

Modification techniques sans préavis, réservées!
 Graphique non à l'échelle!
 Dimensions valables uniquement revêtues d'une signature!

Technische Änderungen vorbehalten!
 Nicht maßstäblich!
 Maße in mm unverbindlich!

**ITT**

VOGEL SPIRALGEHÄUSEPUMPEN
VOGEL POMPES A VOLUTES
VOGEL VOLUTE CASING PUMPS

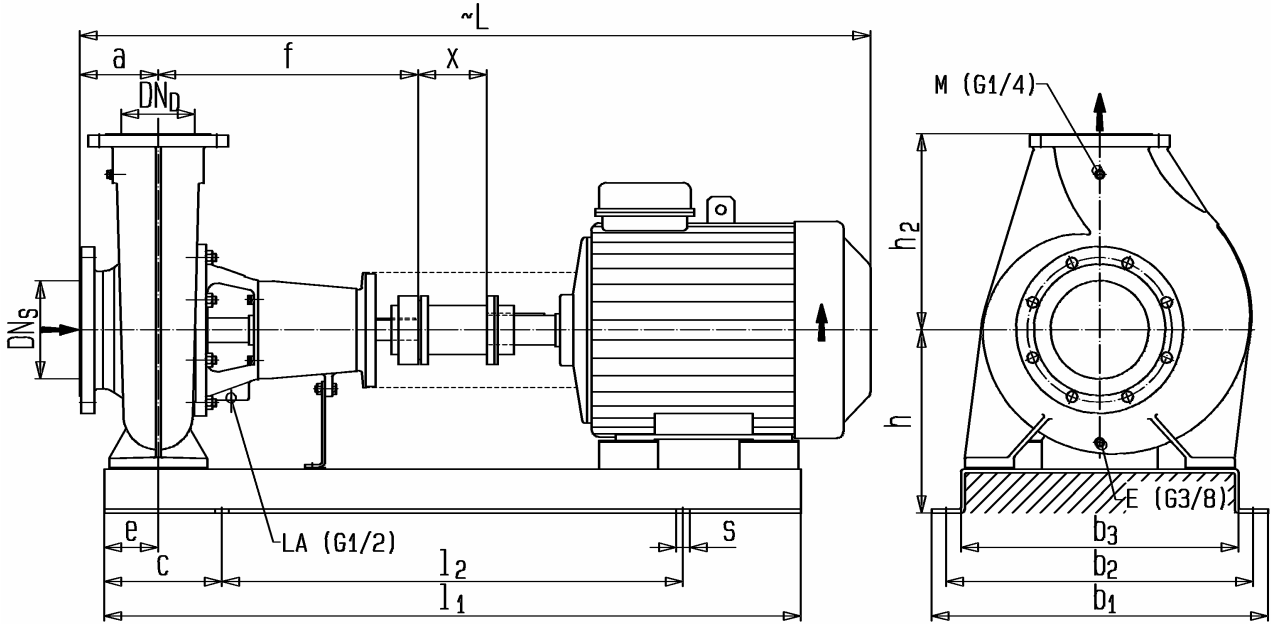
Bauart
Construction
Design

L1450 min⁻¹

1100.1A687
 Rev.0

Vogel Pumpen

Aggregatsmaßzeichnung mit Ausbakupplung (x=140)
Dimensions d'agrégat avec l'entretoise embrayage (x=140)
Aggregate dimensional drawing with spacer coupling (x=140)

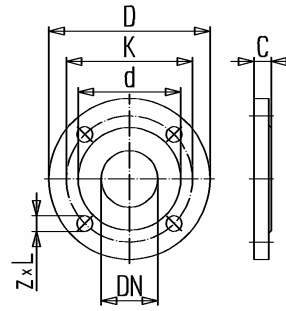
**Flansche – Flanges – Bridges**

DIN EN 1092, PN 10

DN	C	d	K	D	z x L
125	19	184	210	250	8xØ19
150	19	211	240	285	8xØ23
200	20	266	295	340	8xØ23

DIN EN 1092, PN 16

DN	C	d	K	D	z x L
125	19	184	210	250	8xØ19
150	19	211	240	285	8xØ23
200	20	266	295	340	12xØ23



- M... Manometeranschluß
Raccordement de manomètre
Connection for pressure gauge
- E... Entleerung
drainage
drainage
- LA... Leckflüssigkeit
Liquide de fuite
Leakage

Pumpentype Type de pompes Pump typ	Motor Moteur Motor [kW]	DN _S	DN _D	Masse Poids Weight [kg]	Abmessungen [mm] Dimensions [mm] Dimensions [mm]														Grundplatte plaque de base Base plate
					a	f	h ₂	e	h	L	l ₁	l ₂	b ₁	b ₂	b ₃	c	s		
					L125-400U...-2204	22	125	150	432	140	530	400	110	408	1515	1420	940	670	
L125-400U...-3004	30	529	140	530	400	110			408	1635	1420	940	670	610	550	240	4xM24x400	7115	
L125-400U...-3704	37	631	140	530	400	110			408	1675	1420	940	670	610	550	240	4xM24x400	7090	
L125-400U...-4504	45	656	140	530	400	110			408	1700	1570	1050	740	680	610	260	4xM24x400	8090	
L125-400U...-5504	55	756	140	530	400	110			408	1775	1570	1050	740	680	610	260	4xM24x400	8065	
L150-250U...-1504	15	150	200	389	160	535	375	110	373	1491	1420	940	670	610	550	240	4xM24x400	7120	
L150-250U...-1854	18,5			429	160	535	375	110	373	1540	1420	940	670	610	550	240	4xM24x400	7100	
L150-250U...-2204	22			439	160	535	375	110	373	1540	1420	940	670	610	550	240	4xM24x400	7100	
L150-315U...-3004	30	150	200	553	160	530	400	110	373	1655	1420	940	670	610	550	240	4xM24x400	7080	
L150-315U...-3704	37			611	160	530	400	110	373	1695	1420	940	670	610	550	240	4xM24x400	7055	
L150-315U...-4504	45			636	160	530	400	110	373	1720	1420	940	670	610	550	240	4xM24x400	7055	
L150-315U...-5504	55			719	160	530	400	110	373	1795	1570	1050	740	680	610	260	4xM24x400	8030	
L150-400U...-3004	30			150	200	590	160	530	450	110	408	1655	1420	940	670	610	550	240	4xM24x400
L150-400U...-3704	37	653	160			530	450	110	408	1695	1420	940	670	610	550	240	4xM24x400	7090	
L150-400U...-4504	45	678	160			530	450	110	408	1720	1420	940	640	610	550	240	4xM24x400	7090	
L150-400U...-5504	55	794	160			530	450	110	408	1795	1570	1050	740	680	610	260	4xM24x400	8065	
L150-400U...-7504	75	927	160			530	450	110	408	1870	1570	1050	740	680	610	260	4xM24x400	8035	
L150-400U...-9004	90			1001	160	530	450	110	408	1870	1570	1050	740	680	610	260	4xM24x400	8035	

Engineered for life

This leaflet is subject to alteration!
 Draw not to scale!
 Certified for construction purposes only when signed!

Modification techniques sans préavis, réservées!
 Graphique non à l'échelle!
 Dimensions variables uniquement revêtues d'une signature!

Technische Änderungen vorbehalten!
 Nicht maßstäblich!
 Maße in mm unverbindlich!

**ITT**

VOGEL SPIRALGEHÄUSEPUMPEN
VOGEL POMPES A VOLUTES
VOGEL VOLUTE CASING PUMPS

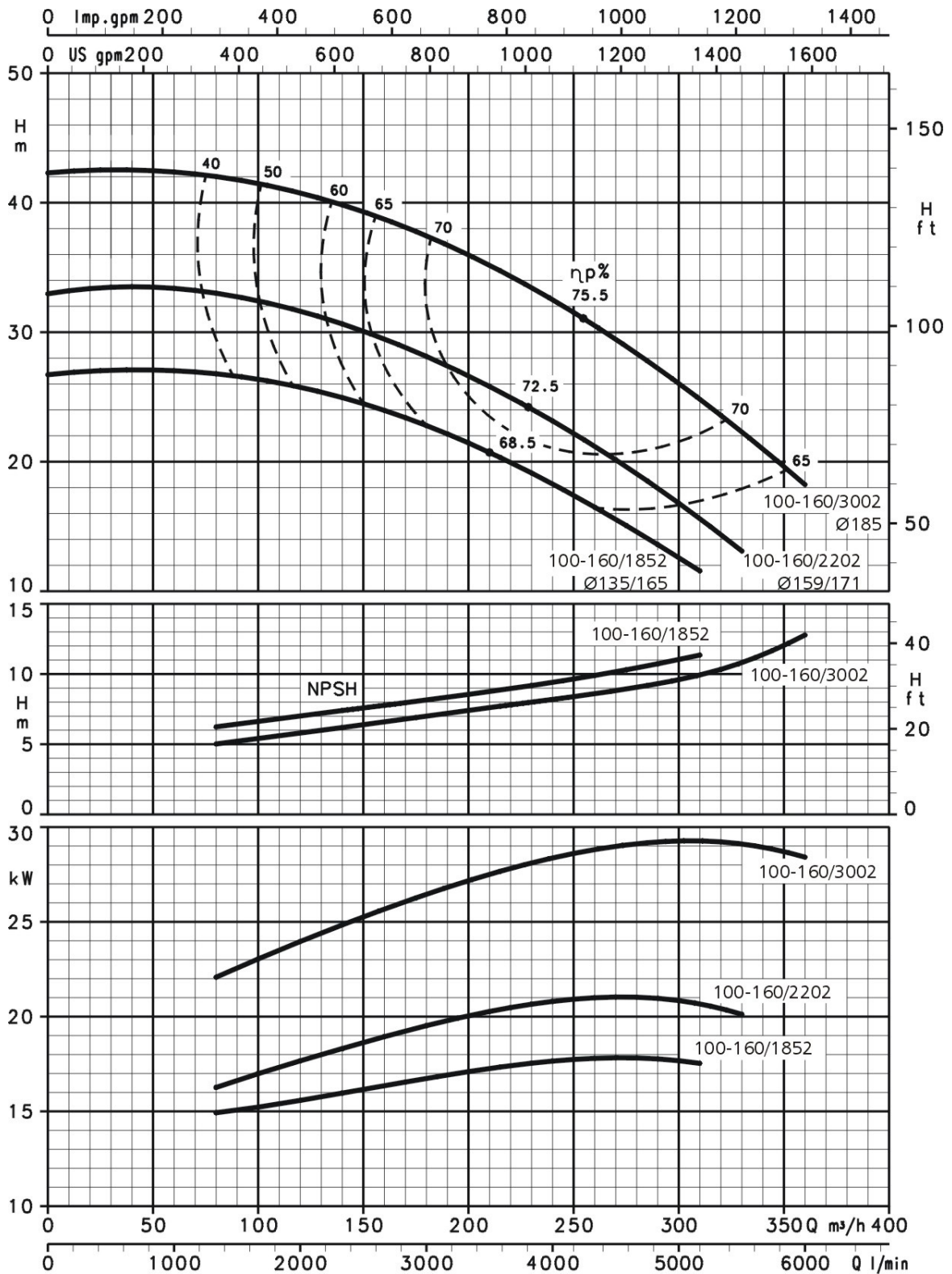
Bauart
Construction
Design

L**2900 min⁻¹**

1100.1C119
 Rev. 1

Vogel Pumpen

Pumpengröße
grandeur de pompe
pump size

L 100-160, DN 125/100

Technische Änderungen vorbehalten!
 Modifications techniques, sans préavis, réservées!
 This leaflet is subject to alteration without notice

Kennlinien gelten für kaltes Wasser $\rho=1\text{kg/dm}^3$ und $\nu=1\text{mm}^2/\text{s}$
 Caractéristiques réfèrent à l'eau froide $\rho=1\text{kg/dm}^3$ et $\nu=1\text{mm}^2/\text{s}$
 Data refer to cold water $\rho=1\text{kg/dm}^3$ and $\nu=1\text{mm}^2/\text{s}$

**ITT**

VOGEL SPIRALGEHÄUSEPUMPEN
VOGEL POMPES A VOLUTES
VOGEL VOLUTE CASING PUMPS

Bauart
Construction
Design

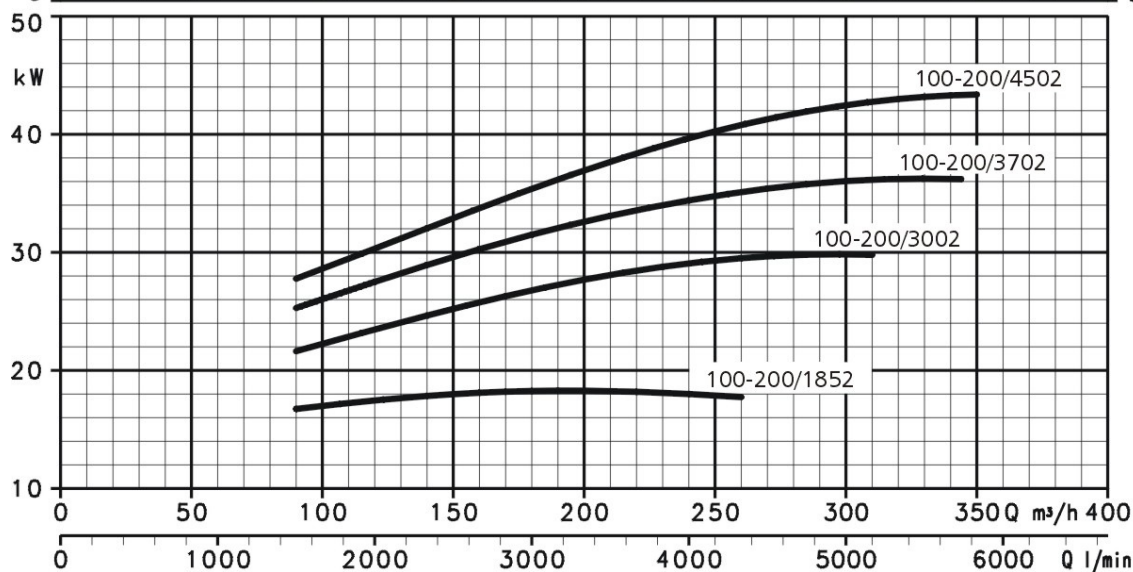
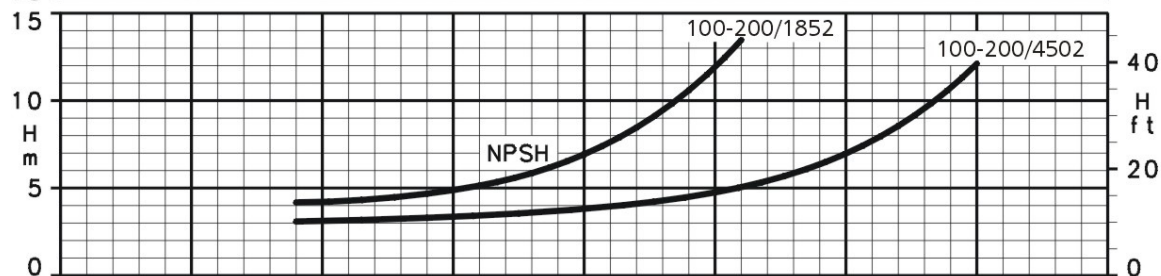
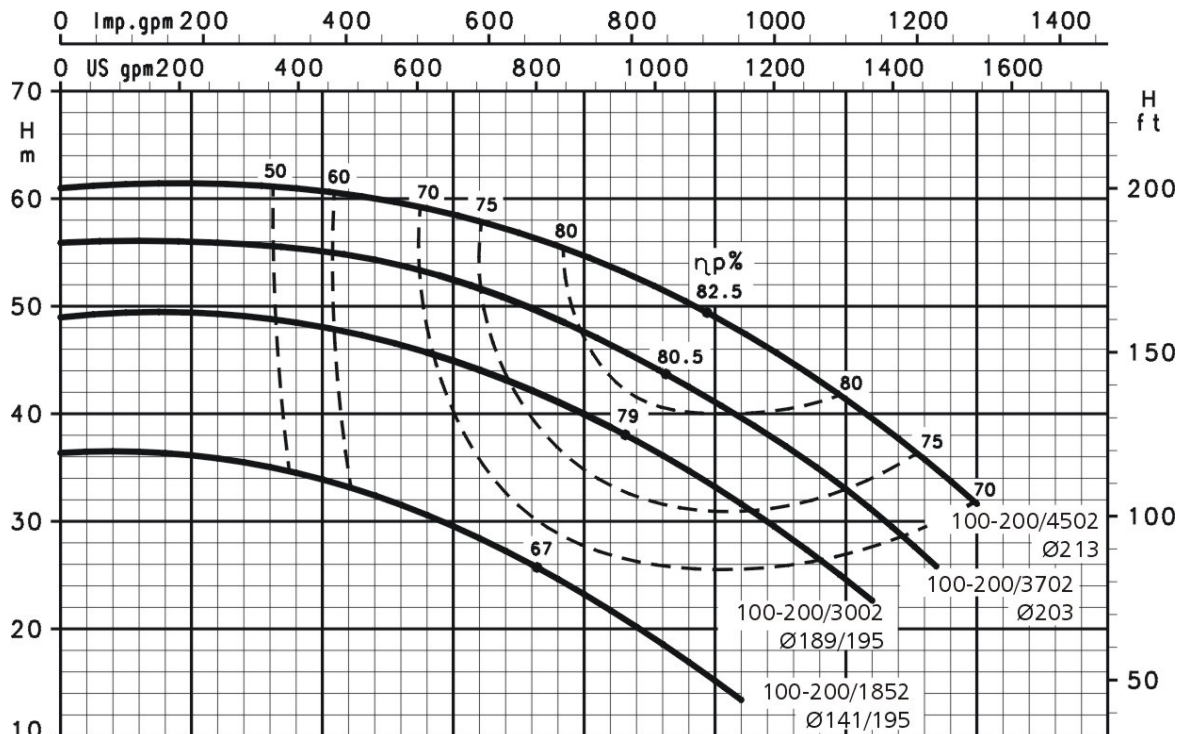
L
2900 min⁻¹

1100.1C120
 Rev. 1

Vogel Pumpen

Pumpengröße
grandeur de pompe
pump size

L 100-200, DN 125/100



Technische Änderungen vorbehalten!
 Modifications techniques, sans préavis, réservées!
 This leaflet is subject to alteration without notice

Kennlinien gelten für kaltes Wasser $\rho=1\text{kg/dm}^3$ und $\nu=1\text{mm}^2/\text{s}$
 Caractéristiques réfèrent à l'eau froide $\rho=1\text{kg/dm}^3$ et $\nu=1\text{mm}^2/\text{s}$
 Data refer to cold water $\rho=1\text{kg/dm}^3$ and $\nu=1\text{mm}^2/\text{s}$



ITT

VOGEL SPIRALGEHÄUSEPUMPEN
VOGEL POMPES A VOLUTES
VOGEL VOLUTE CASING PUMPS

Bauart
Construction
Design



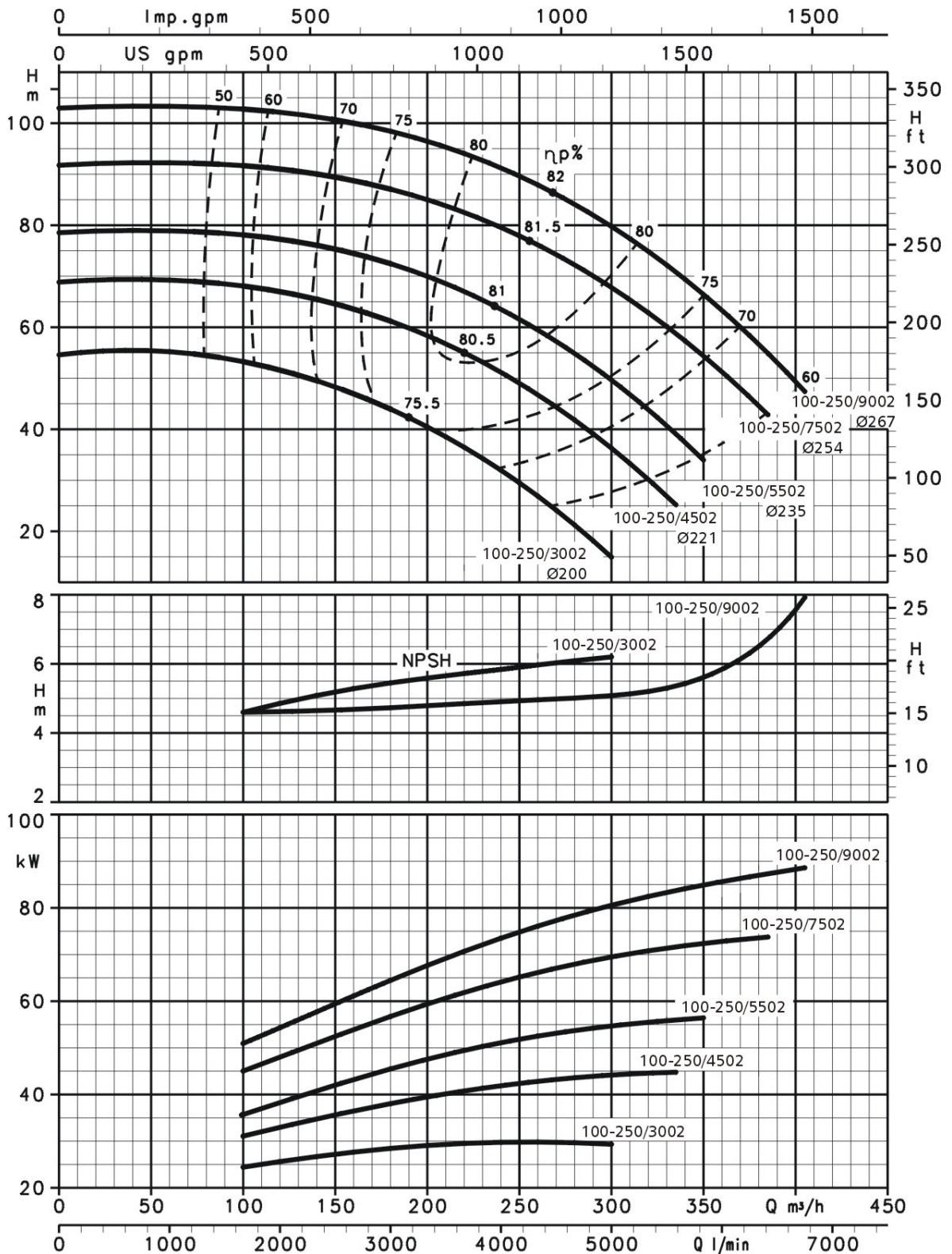
2900 min⁻¹

1100.1C121
Rev. 1

Vogel Pumpen

Pumpengröße
grandeur de pompe
pump size

L 100-250, DN 125/100



Technische Änderungen vorbehalten!
Modifications techniques, sans préavis, réservées!
This leaflet is subject to alteration without notice

Kennlinien gelten für kaltes Wasser $\rho=1\text{kg/dm}^3$ und $\nu=1\text{mm}^2/\text{s}$
Caractéristiques réfèrent à l'eau froide $\rho=1\text{kg/dm}^3$ et $\nu=1\text{mm}^2/\text{s}$
Data refer to cold water $\rho=1\text{kg/dm}^3$ and $\nu=1\text{mm}^2/\text{s}$

ITT**VOGEL SPIRALGEHÄUSEPUMPEN
VOGEL POMPES A VOLUTES
VOGEL VOLUTE CASING PUMPS****Bauart
Construction
Design****L**
2900 min⁻¹**1100.1C122**
Rev. 1

Vogel Pumpen

Pumpengröße
grandeur de pompe
pump size**L 125-200, DN 150/125**

Performance curves showing head (H) vs flow rate (Q) for three pump models: 125-200/3002, 125-200/4502, and 125-200/5502. The graph includes efficiency curves (η_p) and is plotted against flow rate in Imp. gpm, US gpm, and m³/h, and head in meters and feet.

NPSH curves showing required head (H) vs flow rate (Q) for three pump models: 125-200/3002, 125-200/4502, and 125-200/5502. The graph is plotted against flow rate in m³/h and required head in meters and feet.

Power curves showing power (kW) vs flow rate (Q) for three pump models: 125-200/3002, 125-200/4502, and 125-200/5502. The graph is plotted against flow rate in m³/h and power in kW.

Technische Änderungen vorbehalten!
Modifications techniques, sans préavis, réservées!
This leaflet is subject to alteration without noticeKennlinien gelten für kaltes Wasser $\rho=1\text{kg/dm}^3$ und $\nu=1\text{mm}^2/\text{s}$
Caractéristiques réfèrent à l'eau froide $\rho=1\text{kg/dm}^3$ et $\nu=1\text{mm}^2/\text{s}$
Data refer to cold water $\rho=1\text{kg/dm}^3$ and $\nu=1\text{mm}^2/\text{s}$ *Engineered for life*



ITT

VOGEL SPIRALGEHÄUSEPUMPEN
VOGEL POMPES A VOLUTES
VOGEL VOLUTE CASING PUMPS

Bauart
Construction
Design

L

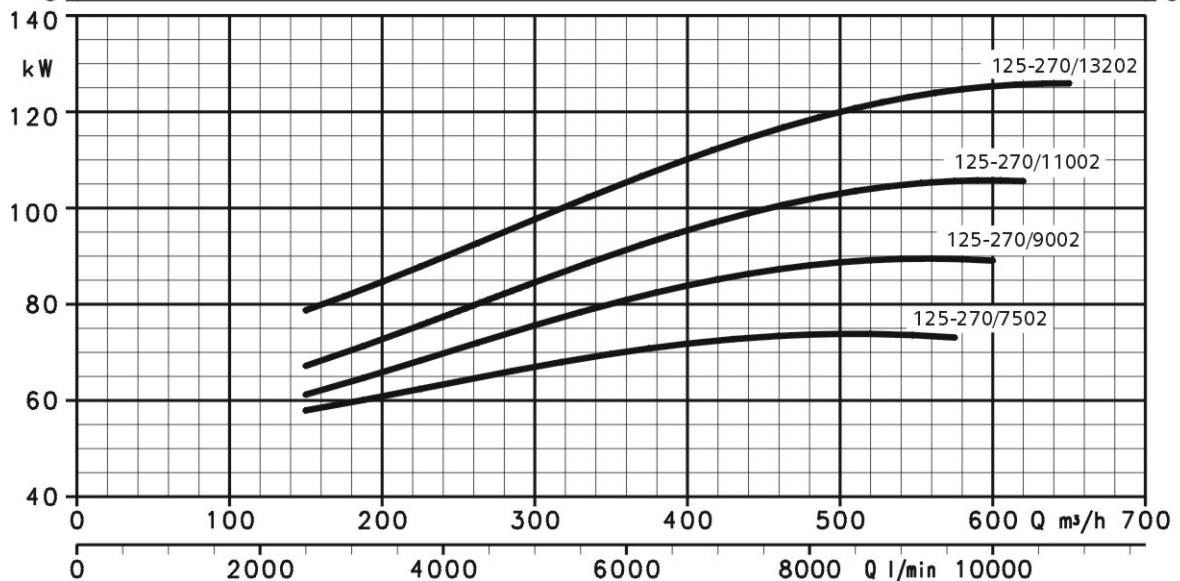
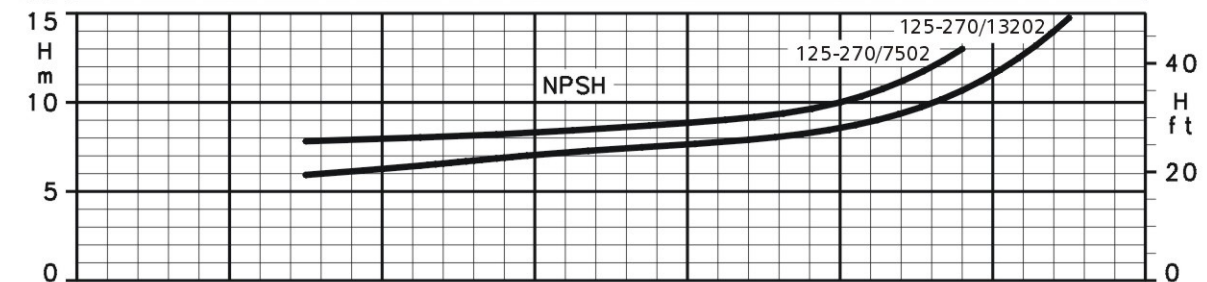
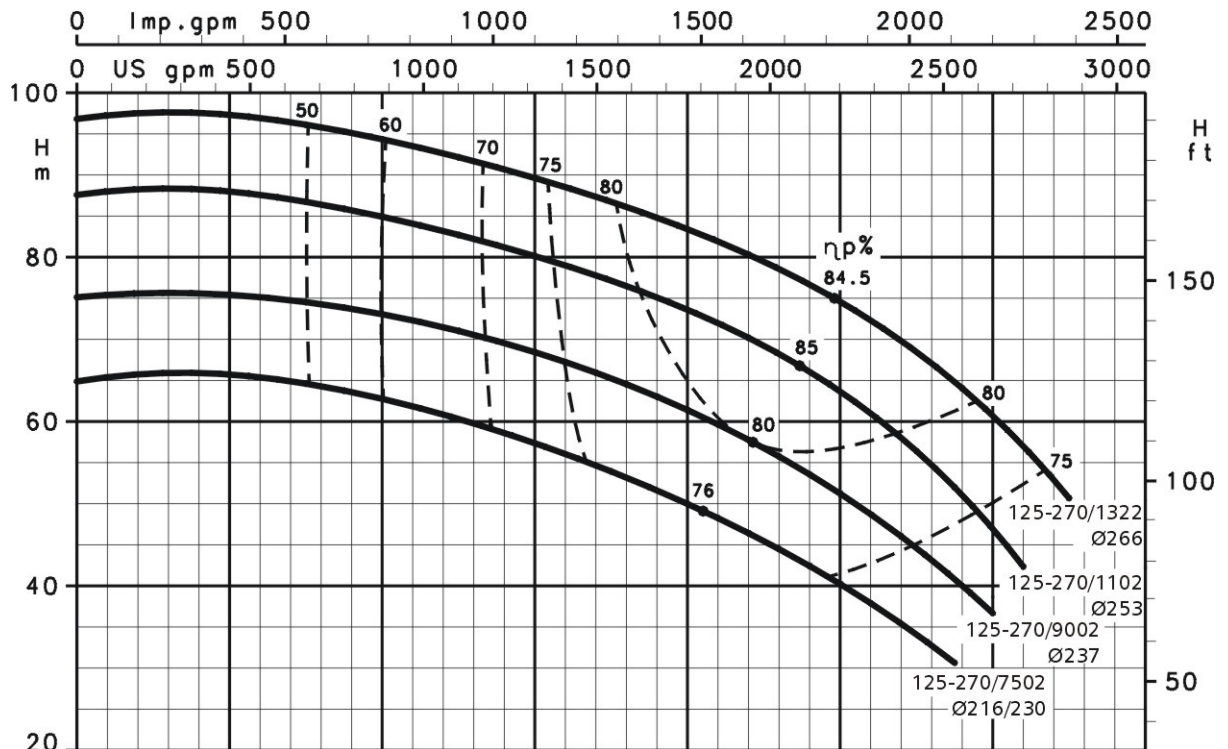
2900 min⁻¹

1100.1C123
Rev. 1

Vogel Pumpen

Pumpengröße
grandeur de pompe
pump size

L 125-270, DN 150/125



Technische Änderungen vorbehalten!
Modifications techniques, sans préavis, réservées!
This leaflet is subject to alteration without notice

Kennlinien gelten für kaltes Wasser $\rho=1\text{kg/dm}^3$ und $\nu=1\text{mm}^2/\text{s}$
Caractéristiques réfèrent à l'eau froide $\rho=1\text{kg/dm}^3$ et $\nu=1\text{mm}^2/\text{s}$
Data refer to cold water $\rho=1\text{kg/dm}^3$ and $\nu=1\text{mm}^2/\text{s}$

ITT
VOGEL SPIRALGEHÄUSEPUMPEN
VOGEL POMPES A VOLUTES
VOGEL VOLUTE CASING PUMPS
Bauart
Construction
Design
L
1450 min⁻¹
1100.1C220
 Rev. 1

Vogel Pumpen

 Pumpengröße
 grandeur de pompe
 pump size

L 80-315, DN 100/80

Performance curves for L 80-315 pumps. The graph shows head (H) in meters (m) and feet (ft) versus flow rate (Q) in imp. gpm and US gpm. Efficiency curves (η_p) are shown as dashed lines, and isometric head curves are shown as solid lines. The models and their diameters are: 80-315/554 (Ø244), 80-315/754 (Ø266), 80-315/1104 (Ø290), and 80-315/1504 (Ø316).

NPSH curve showing required head (H) in meters (m) and feet (ft) versus flow rate (Q) in m³/h and l/min. The curve is labeled "NPSH" and shows the required head increasing with flow rate for models 80-315/554 and 80-315/1504.

Power curves showing power (kW) versus flow rate (Q) in m³/h and l/min. The curves are labeled with model numbers: 80-315/554, 80-315/754, 80-315/1104, and 80-315/1504. Power increases with flow rate for all models.

 Technische Änderungen vorbehalten!
 Modifications techniques, sans préavis, réservées!
 This leaflet is subject to alteration without notice

 Kennlinien gelten für kaltes Wasser $\rho=1\text{kg/dm}^3$ und $\nu=1\text{mm}^2/\text{s}$
 Caractéristiques réfèrent à l'eau froid $\rho=1\text{kg/dm}^3$ et $\nu=1\text{mm}^2/\text{s}$
 Data refer to cold water $\rho=1\text{kg/dm}^3$ and $\nu=1\text{mm}^2/\text{s}$
Engineered for life



ITT

VOGEL SPIRALGEHÄUSEPUMPEN
VOGEL POMPES A VOLUTES
VOGEL VOLUTE CASING PUMPS

Bauart
Construction
Design



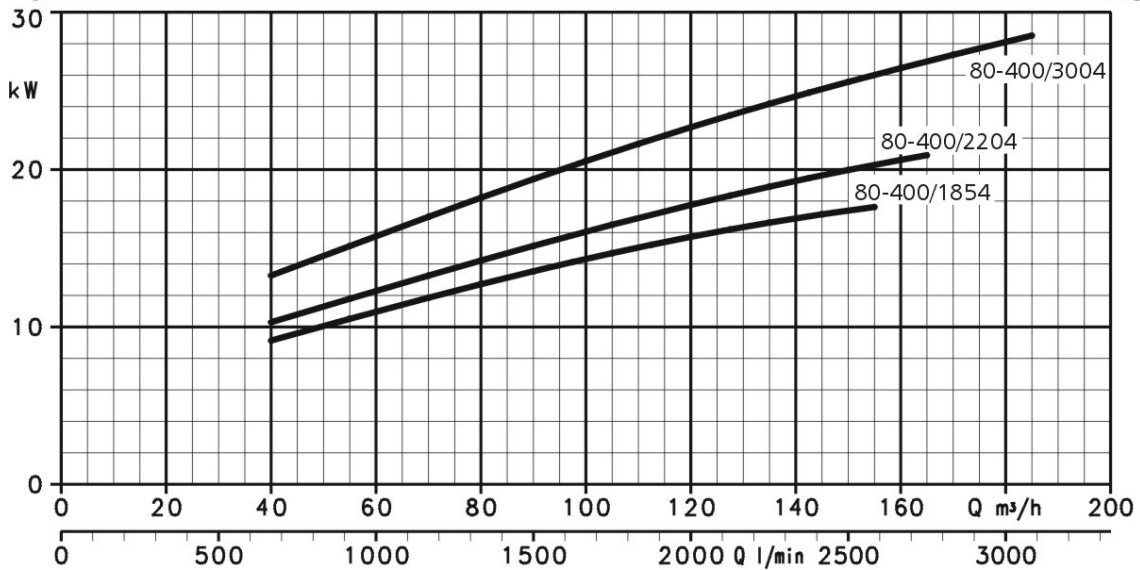
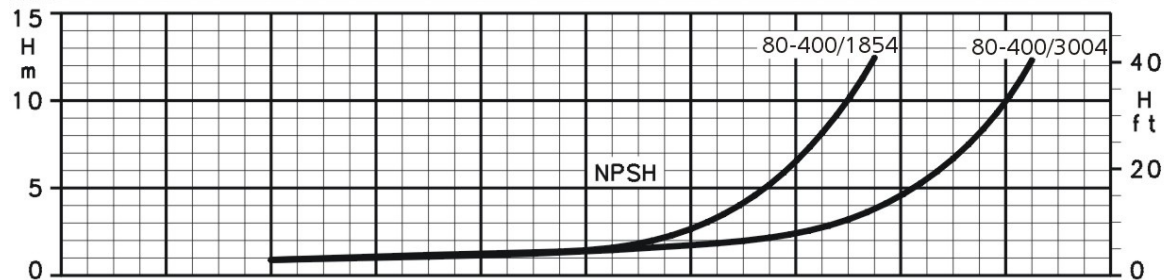
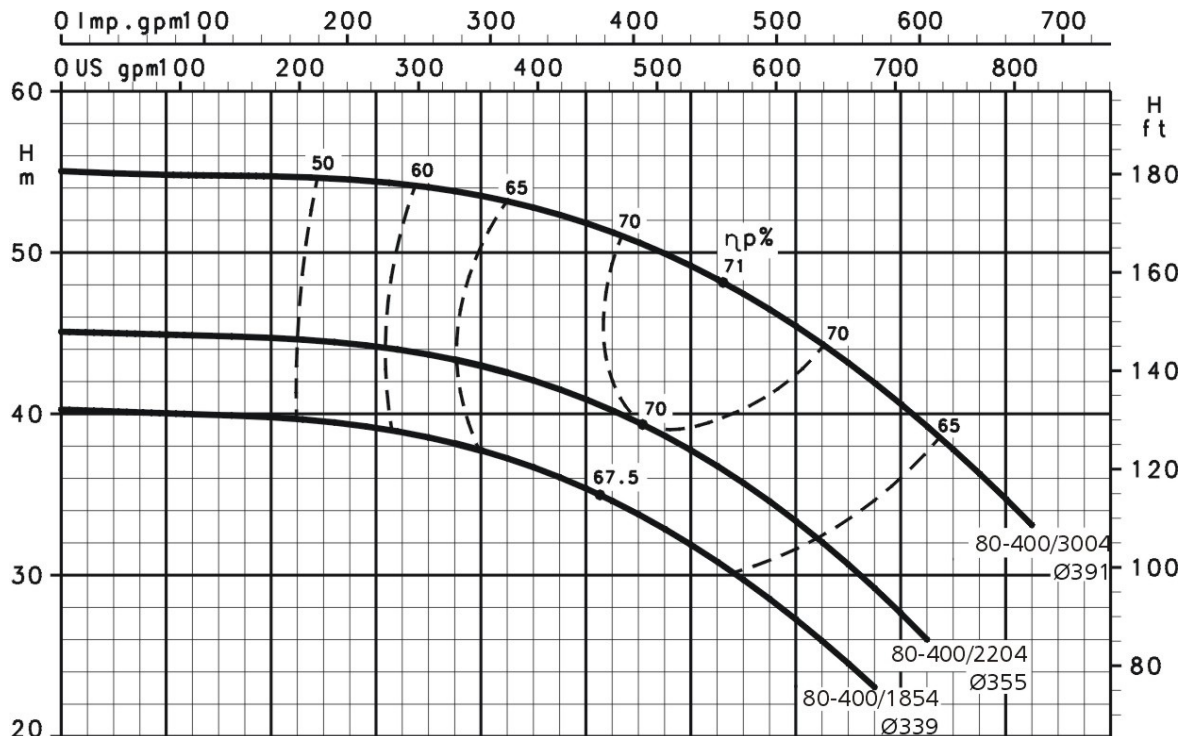
1450 min⁻¹

1100.1C221
Rev. 1

Vogel Pumpen

Pumpengröße
grandeur de pompe
pump size

L 80-400, DN 100/80



Technische Änderungen vorbehalten!
Modifications techniques, sans préavis, réservées!
This leaflet is subject to alteration without notice

Kennlinien gelten für kaltes Wasser $\rho=1\text{kg/dm}^3$ und $\nu=1\text{mm}^2/\text{s}$
Caractéristiques réfèrent à l'eau froide $\rho=1\text{kg/dm}^3$ et $\nu=1\text{mm}^2/\text{s}$
Data refer to cold water $\rho=1\text{kg/dm}^3$ and $\nu=1\text{mm}^2/\text{s}$

ITT
VOGEL SPIRALGEHÄUSEPUMPEN
VOGEL POMPES A VOLUTES
VOGEL VOLUTE CASING PUMPS
Bauart
Construction
Design
L
1450 min⁻¹
1100.1C222
 Rev. 1

Vogel Pumpen

 Pumpengröße
 grandeur de pompe
 pump size

L 100-160, DN 125/100

 Technische Änderungen vorbehalten!
 Modifications techniques, sans préavis, réservées!
 This leaflet is subject to alteration without notice

 Kennlinien gelten für kaltes Wasser $\rho=1\text{kg/dm}^3$ und $\nu=1\text{mm}^2/\text{s}$
 Caractéristiques réfèrent à l'eau froide $\rho=1\text{kg/dm}^3$ et $\nu=1\text{mm}^2/\text{s}$
 Data refer to cold water $\rho=1\text{kg/dm}^3$ and $\nu=1\text{mm}^2/\text{s}$
Engineered for life



ITT

VOGEL SPIRALGEHÄUSEPUMPEN
VOGEL POMPES A VOLUTES
VOGEL VOLUTE CASING PUMPS

Bauart
Construction
Design



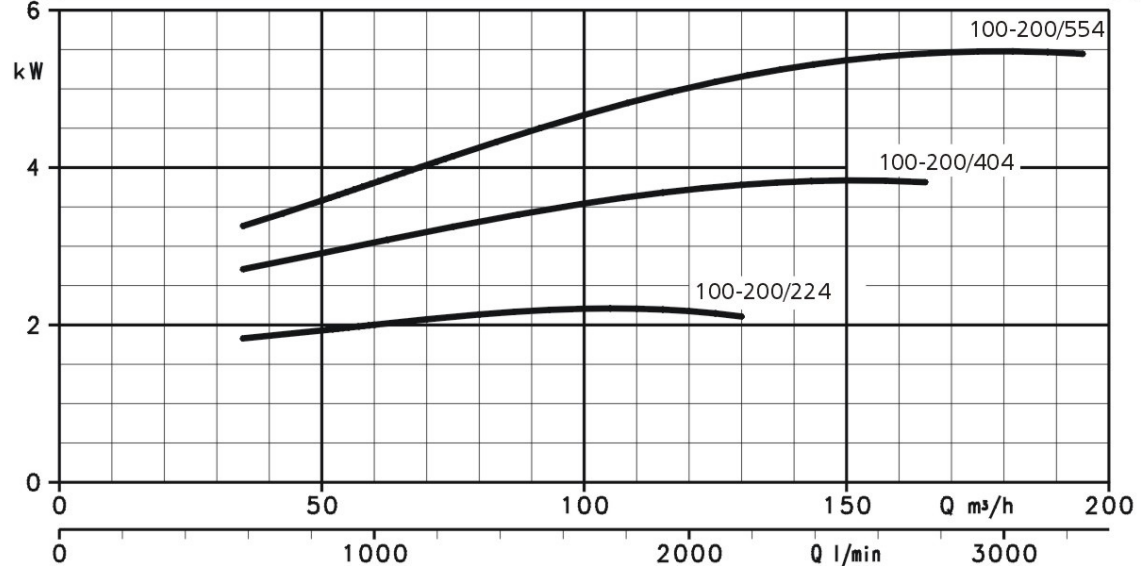
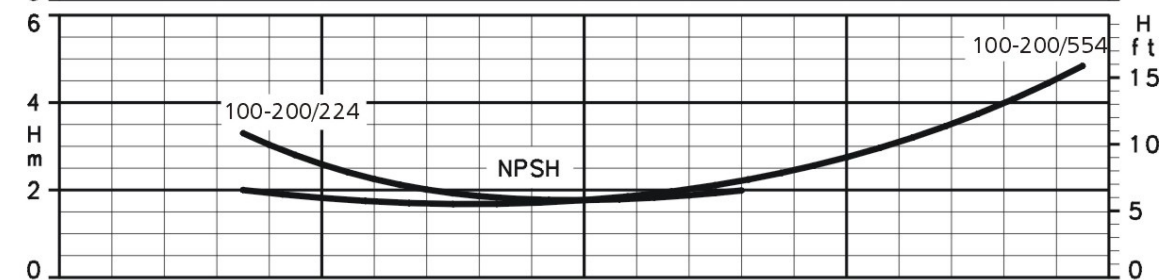
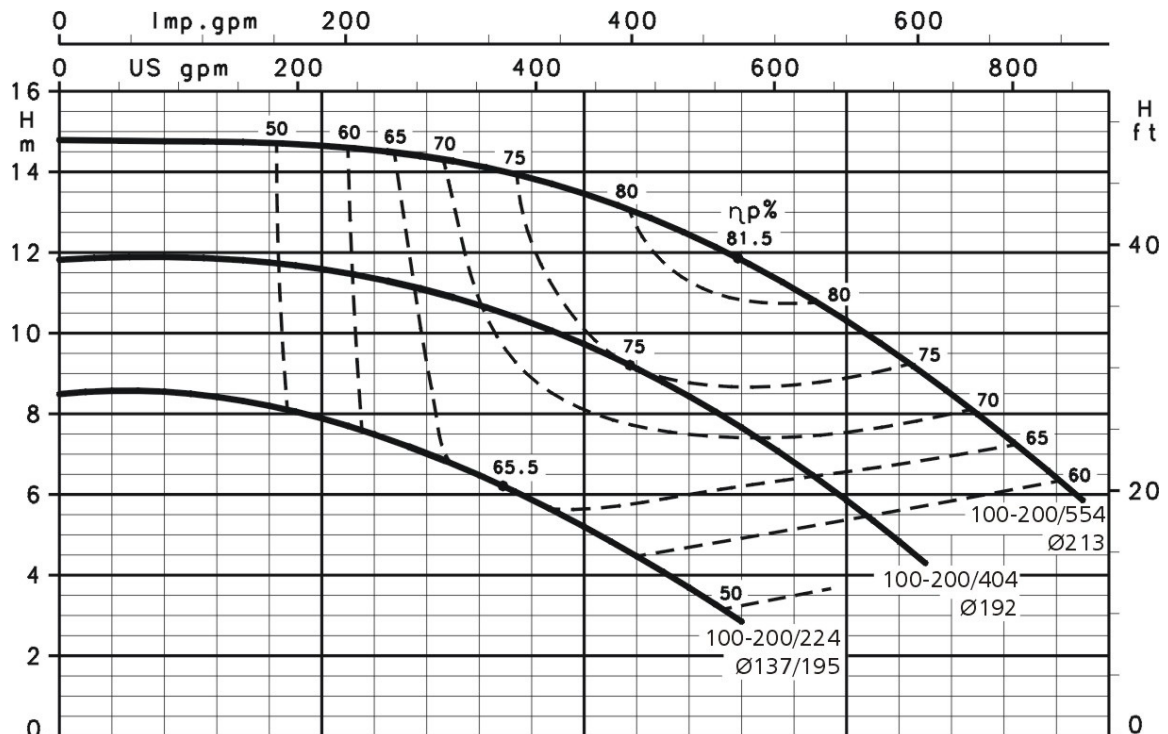
1450 min⁻¹

1100.1C223
Rev. 1

Vogel Pumpen

Pumpengröße
grandeur de pompe
pump size

L 100-200, DN 125/100



Technische Änderungen vorbehalten!
Modifications techniques, sans préavis, réservées!
This leaflet is subject to alteration without notice

Kennlinien gelten für kaltes Wasser $\rho=1\text{kg/dm}^3$ und $\nu=1\text{mm}^2/\text{s}$
Caractéristiques réfèrent à l'eau froide $\rho=1\text{kg/dm}^3$ et $\nu=1\text{mm}^2/\text{s}$
Data refer to cold water $\rho=1\text{kg/dm}^3$ and $\nu=1\text{mm}^2/\text{s}$

ITT
VOGEL SPIRALGEHÄUSEPUMPEN
VOGEL POMPES A VOLUTES
VOGEL VOLUTE CASING PUMPS
Bauart
Construction
Design
L
1450 min⁻¹
1100.1C224
 Rev. 1

Vogel Pumpen

 Pumpengröße
 grandeur de pompe
 pump size

L 100-250, DN 125/100

Performance curves showing head (H) in meters (m) and feet (ft) versus flow rate (Q) in Imperial gallons per minute (Imp. gpm) and US gallons per minute (US gpm). The graph includes efficiency curves ($\eta_p\%$) and specific pump models: 100-250/404 (Ø200), 100-250/554 (Ø221), 100-250/754 (Ø241), and 100-250/1104 (Ø267). Efficiency values range from 50% to 80%.

NPSH curves showing required head (H) in meters (m) and feet (ft) versus flow rate (Q) in m³/h for models 100-250/404 and 100-250/1104.

Power curves showing power consumption (kW) versus flow rate (Q) in m³/h and l/min for models 100-250/404, 100-250/554, 100-250/754, and 100-250/1104.

 Technische Änderungen vorbehalten!
 Modifications techniques, sans préavis, réservées!
 This leaflet is subject to alteration without notice

 Kennlinien gelten für kaltes Wasser $\rho=1\text{kg/dm}^3$ und $\nu=1\text{mm}^2/\text{s}$
 Caractéristiques réfèrent à l'eau froide $\rho=1\text{kg/dm}^3$ et $\nu=1\text{mm}^2/\text{s}$
 Data refer to cold water $\rho=1\text{kg/dm}^3$ and $\nu=1\text{mm}^2/\text{s}$
Engineered for life



ITT

VOGEL SPIRALGEHÄUSEPUMPEN
VOGEL POMPES A VOLUTES
VOGEL VOLUTE CASING PUMPS

Bauart
Construction
Design

L

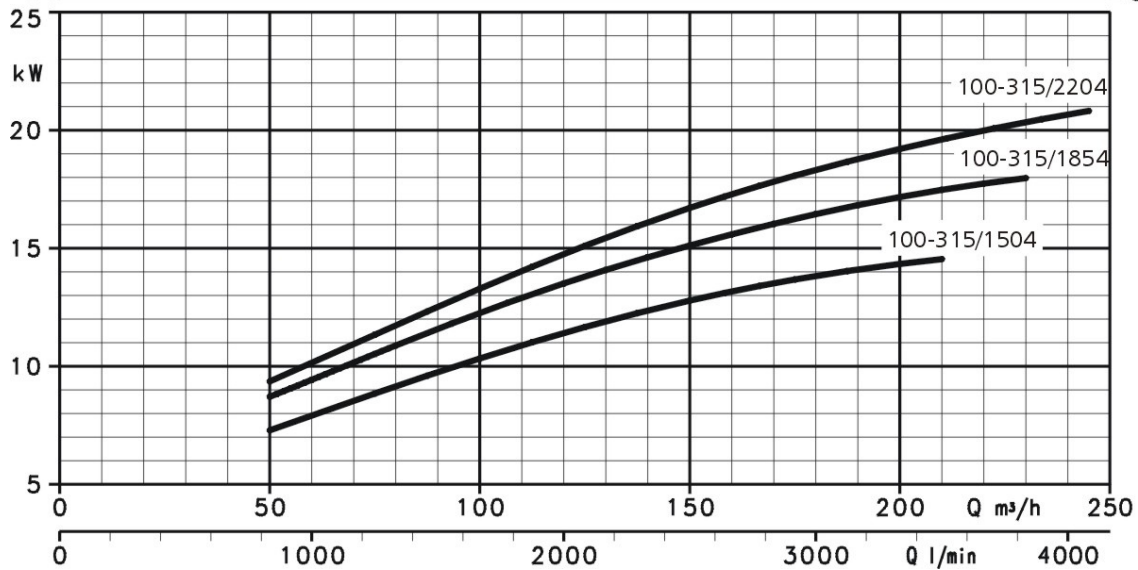
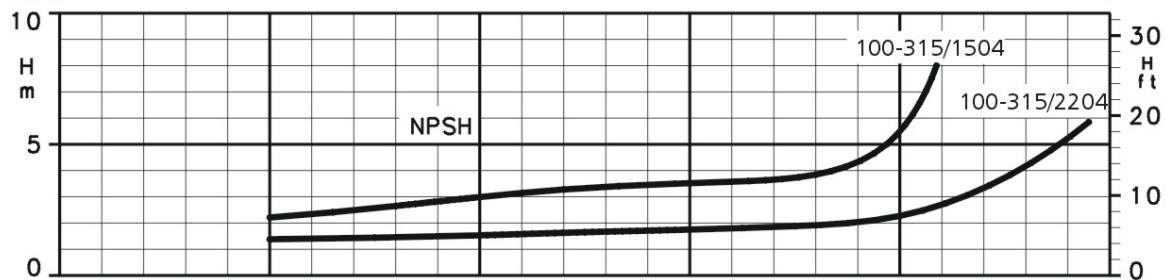
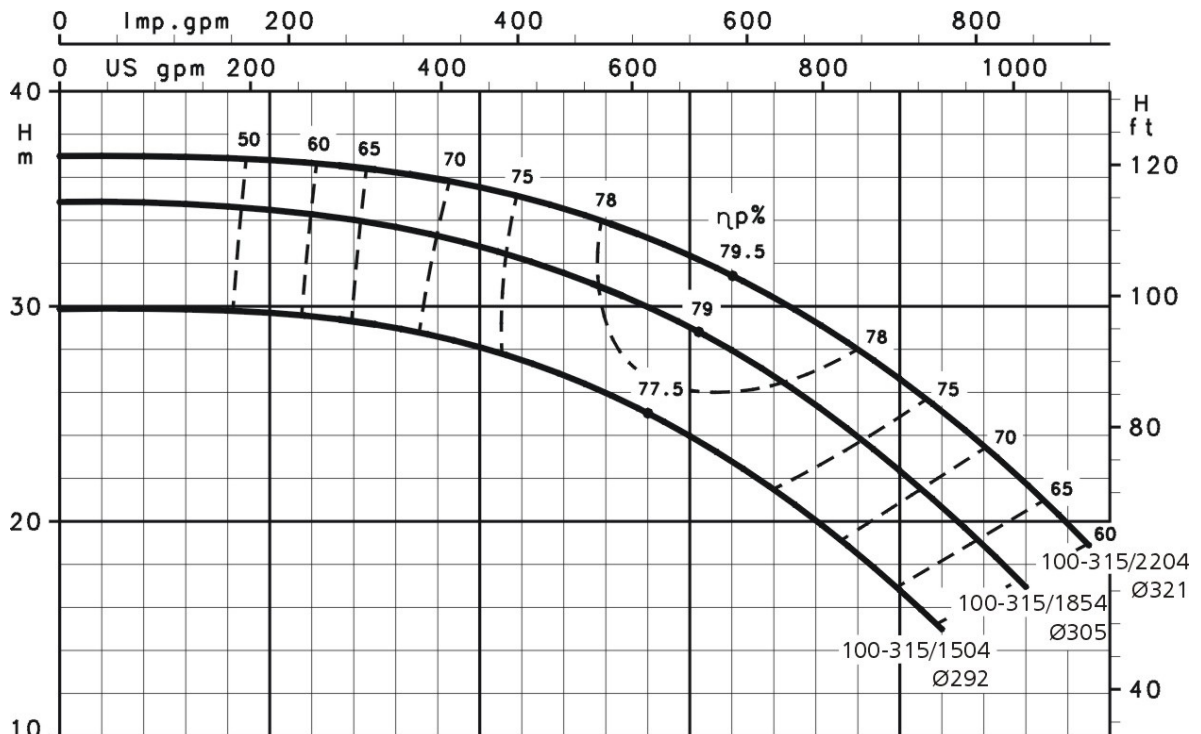
1450 min⁻¹

1100.1C225
Rev. 1

Vogel Pumpen

Pumpengröße
grandeur de pompe
pump size

L 100-315, DN 125/100



Technische Änderungen vorbehalten!
Modifications techniques, sans préavis, réservées!
This leaflet is subject to alteration without notice

Kennlinien gelten für kaltes Wasser $\rho=1\text{kg/dm}^3$ und $\nu=1\text{mm}^2/\text{s}$
Caractéristiques réfèrent à l'eau froide $\rho=1\text{kg/dm}^3$ et $\nu=1\text{mm}^2/\text{s}$
Data refer to cold water $\rho=1\text{kg/dm}^3$ and $\nu=1\text{mm}^2/\text{s}$



ITT

VOGEL SPIRALGEHÄUSEPUMPEN
VOGEL POMPES A VOLUTES
VOGEL VOLUTE CASING PUMPS

Bauart
Construction
Design

L

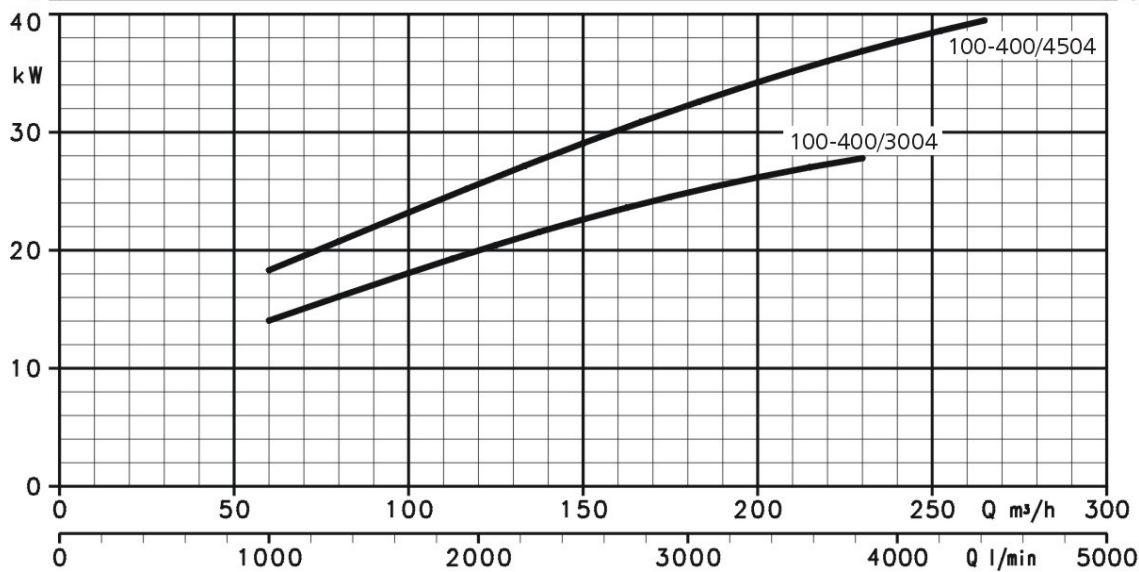
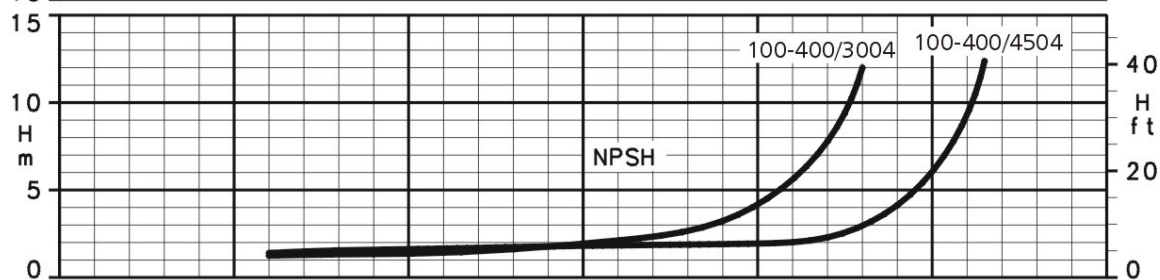
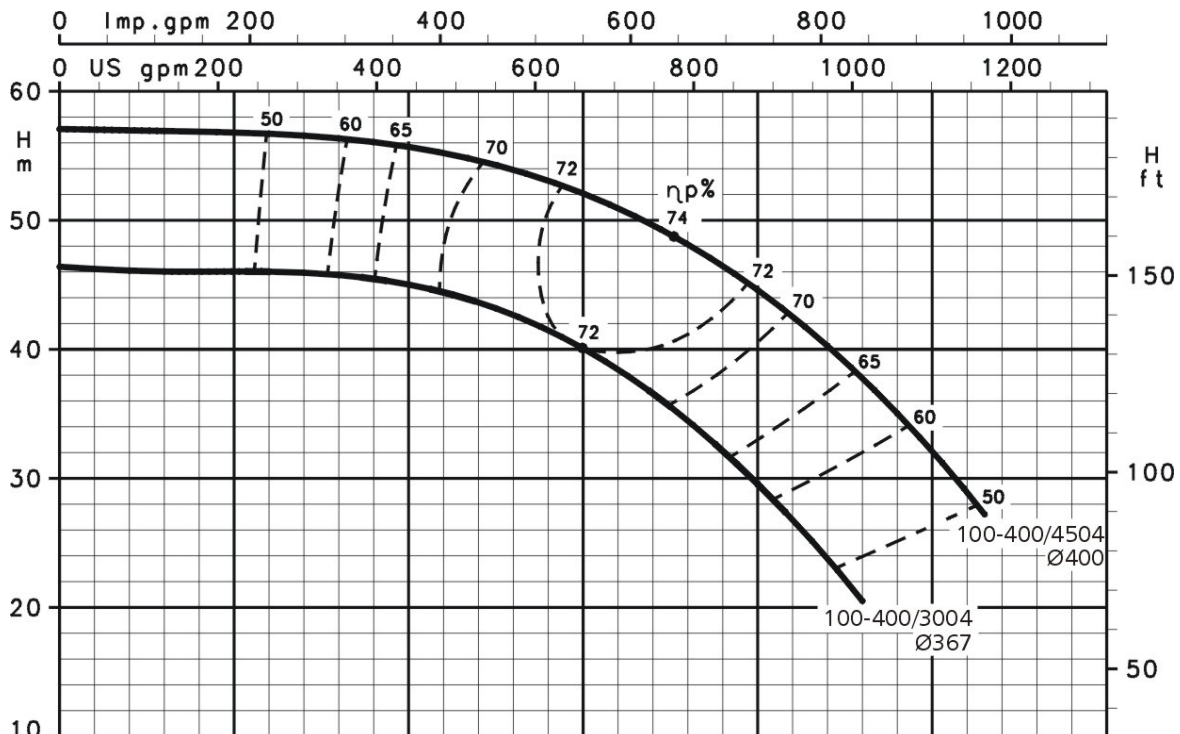
1450 min⁻¹

1100.1C226
Rev. 1

Vogel Pumpen

Pumpengröße
grandeur de pompe
pump size

L 100-400, DN 125/100



Technische Änderungen vorbehalten!
Modifications techniques, sans préavis, réservées!
This leaflet is subject to alteration without notice

Kennlinien gelten für kaltes Wasser $\rho=1\text{kg/dm}^3$ und $\nu=1\text{mm}^2/\text{s}$
Caractéristiques réfèrent à l'eau froid $\rho=1\text{kg/dm}^3$ et $\nu=1\text{mm}^2/\text{s}$
Data refer to cold water $\rho=1\text{kg/dm}^3$ and $\nu=1\text{mm}^2/\text{s}$



ITT

VOGEL SPIRALGEHÄUSEPUMPEN
VOGEL POMPES A VOLUTES
VOGEL VOLUTE CASING PUMPS

Bauart
Construction
Design

L

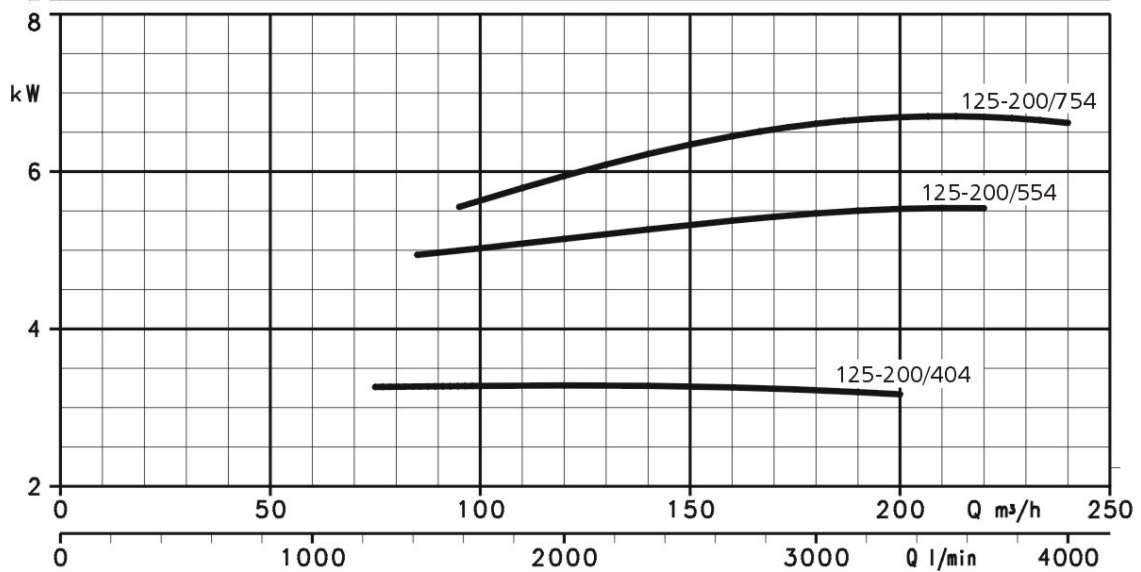
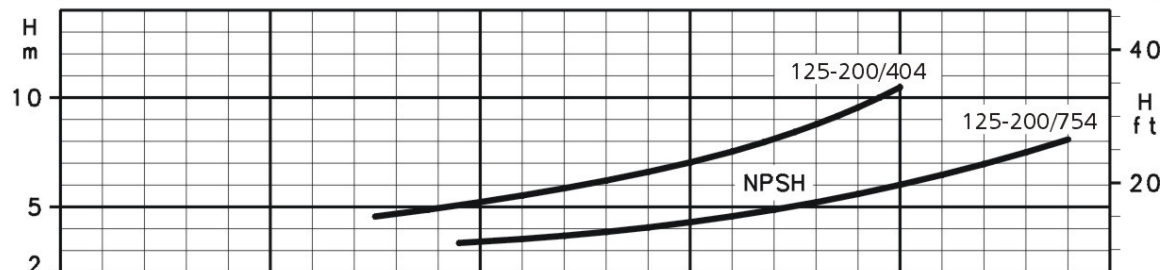
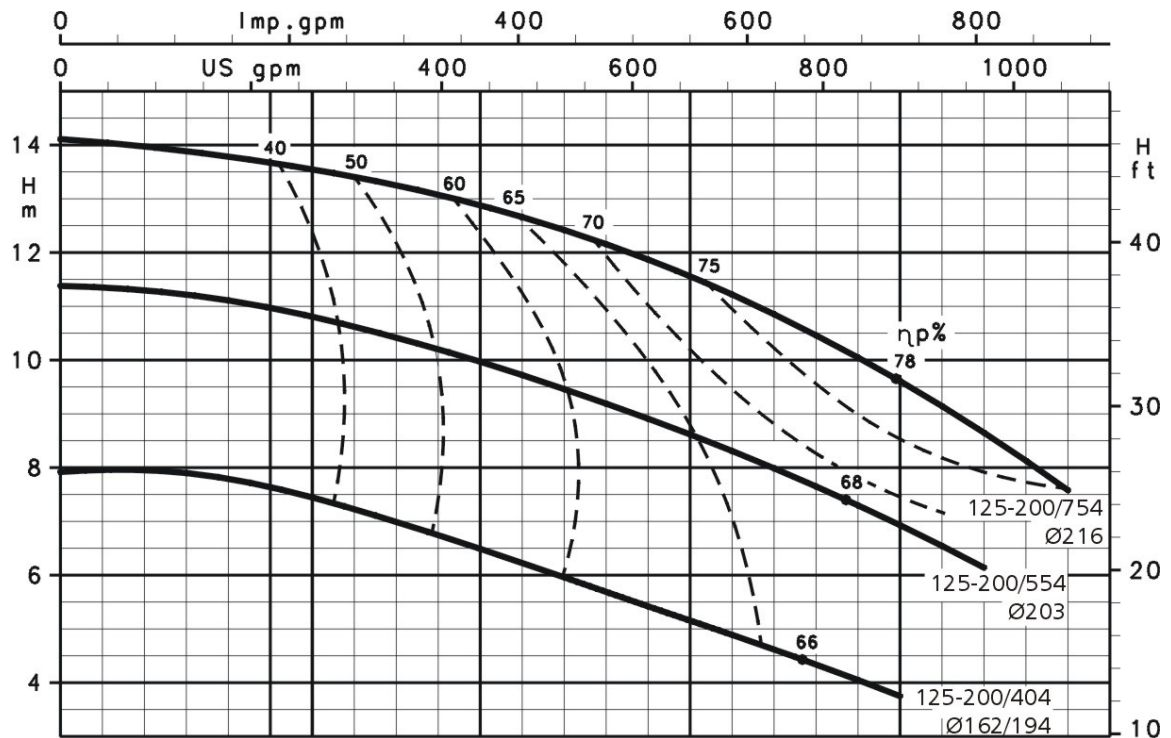
1450 min⁻¹

1100.1C227
Rev. 1

Vogel Pumpen

Pumpengröße
grandeur de pompe
pump size

L 125-200, DN 150/125



Technische Änderungen vorbehalten!
Modifications techniques, sans préavis, réservées!
This leaflet is subject to alteration without notice

Kennlinien gelten für kaltes Wasser $\rho=1\text{kg/dm}^3$ und $\nu=1\text{mm}^2/\text{s}$
Caractéristiques réfèrent à l'eau froide $\rho=1\text{kg/dm}^3$ et $\nu=1\text{mm}^2/\text{s}$
Data refer to cold water $\rho=1\text{kg/dm}^3$ and $\nu=1\text{mm}^2/\text{s}$

ITT
VOGEL SPIRALGEHÄUSEPUMPEN
VOGEL POMPES A VOLUTES
VOGEL VOLUTE CASING PUMPS
Bauart
Construction
Design
L
1450 min⁻¹
1100.1C228
 Rev. 1

Vogel Pumpen

 Pumpengröße
 grandeur de pompe
 pump size

L 125-250, DN 150/125

Performance curves showing head (H) in meters (m) and feet (ft) versus flow rate (Q) in liters per minute (l/min) and US gallons per minute (US gpm). The top x-axis shows flow rate in US gpm (0 to 1400) and the bottom x-axis shows flow rate in l/min (0 to 1600). The y-axis shows head (H) in meters (5 to 30) and feet (20 to 80). Curves are labeled with efficiency values: 50, 60, 70, 75, 80, 80.5, 82. Specific pump models and diameters are indicated: 125-250/754 Ø213, 125-250/1104 Ø239, 125-250/1504 Ø258, and 125-250/1854 Ø268.

NPSH curves showing head (H) in meters (m) and feet (ft) versus flow rate (Q) in l/min. The y-axis shows head (H) in meters (0 to 15) and feet (0 to 40). The x-axis shows flow rate (Q) in l/min (0 to 400). Curves are labeled for models 125-250/754 and 125-250/1854.

Power curves showing power (kW) versus flow rate (Q) in l/min. The y-axis shows power (kW) (5 to 20). The x-axis shows flow rate (Q) in l/min (0 to 400). Curves are labeled for models 125-250/754, 125-250/1104, 125-250/1504, and 125-250/1854.

 Technische Änderungen vorbehalten!
 Modifications techniques, sans préavis, réservées!
 This leaflet is subject to alteration without notice

 Kennlinien gelten für kaltes Wasser $\rho=1\text{kg/dm}^3$ und $\nu=1\text{mm}^2/\text{s}$
 Caractéristiques réfèrent à l'eau froide $\rho=1\text{kg/dm}^3$ et $\nu=1\text{mm}^2/\text{s}$
 Data refer to cold water $\rho=1\text{kg/dm}^3$ and $\nu=1\text{mm}^2/\text{s}$
Engineered for life



ITT

VOGEL SPIRALGEHÄUSEPUMPEN
VOGEL POMPES A VOLUTES
VOGEL VOLUTE CASING PUMPS

Bauart
Construction
Design



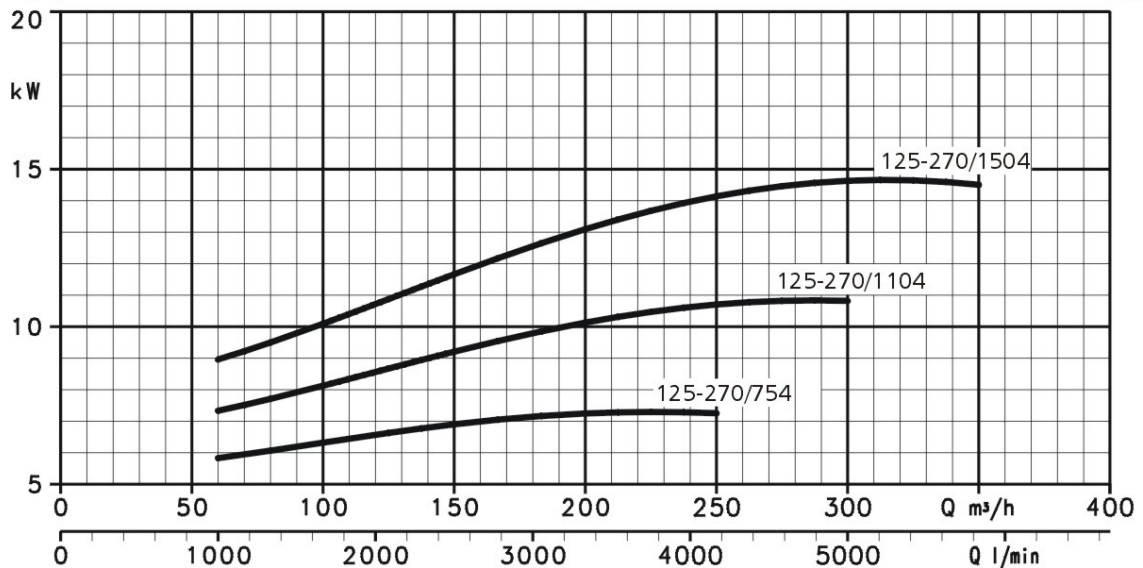
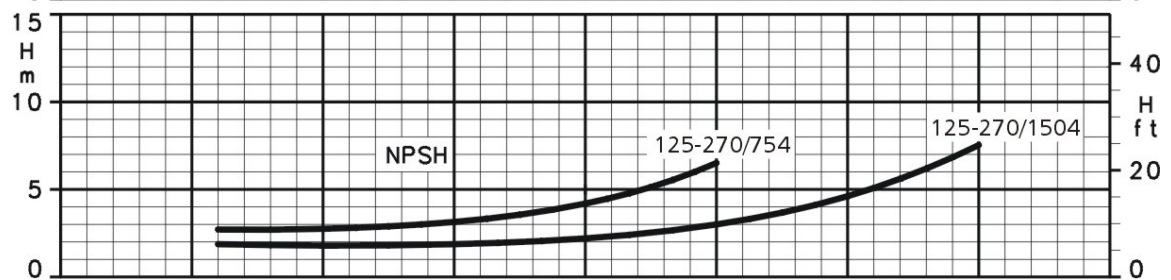
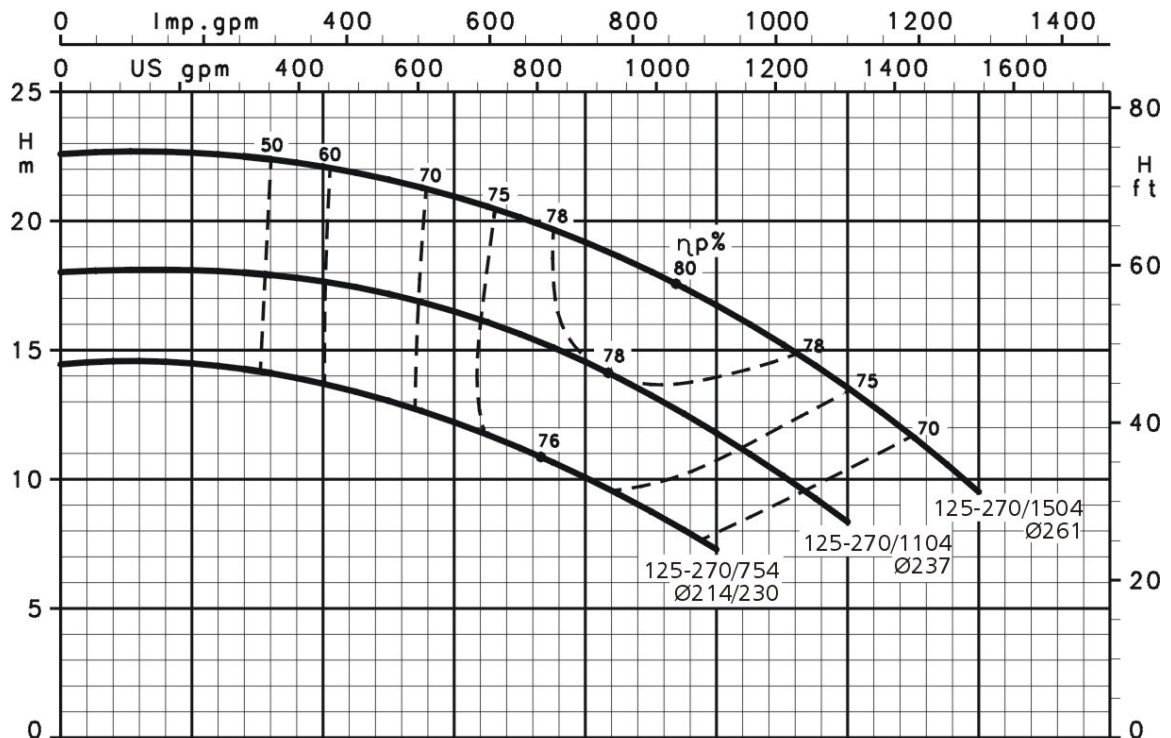
1450 min⁻¹

1100.1C229
Rev. 1

Vogel Pumpen

Pumpengröße
grandeur de pompe
pump size

L 125-270, DN 150/125



Technische Änderungen vorbehalten!
Modifications techniques, sans préavis, réservées!
This leaflet is subject to alteration without notice

Kennlinien gelten für kaltes Wasser $\rho=1\text{kg/dm}^3$ und $\nu=1\text{mm}^2/\text{s}$
Caractéristiques réfèrent à l'eau froide $\rho=1\text{kg/dm}^3$ et $\nu=1\text{mm}^2/\text{s}$
Data refer to cold water $\rho=1\text{kg/dm}^3$ and $\nu=1\text{mm}^2/\text{s}$

**ITT**

VOGEL SPIRALGEHÄUSEPUMPEN
VOGEL POMPES A VOLUTES
VOGEL VOLUTE CASING PUMPS

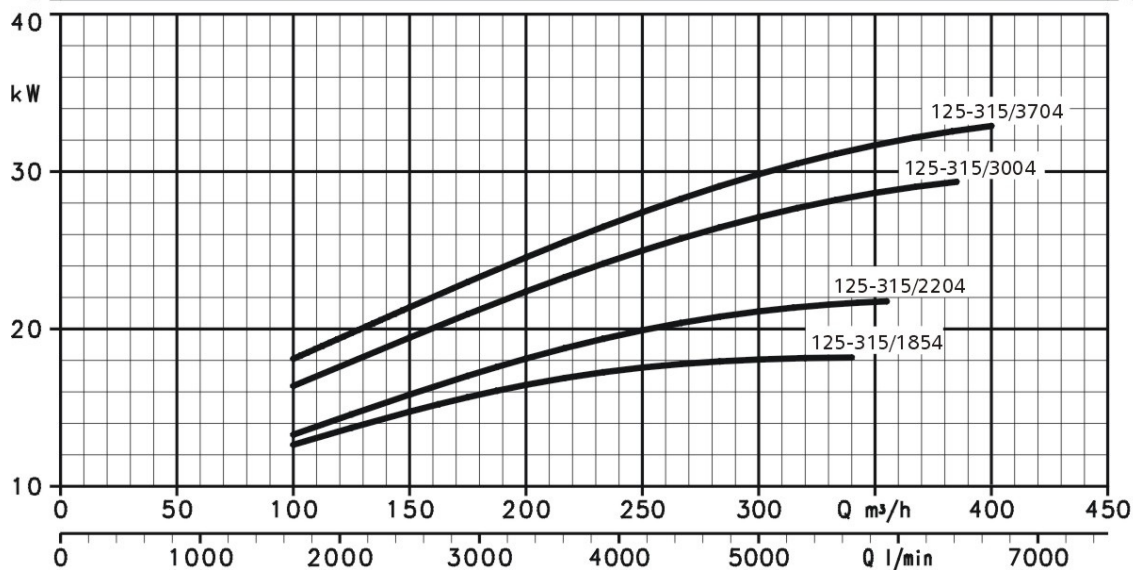
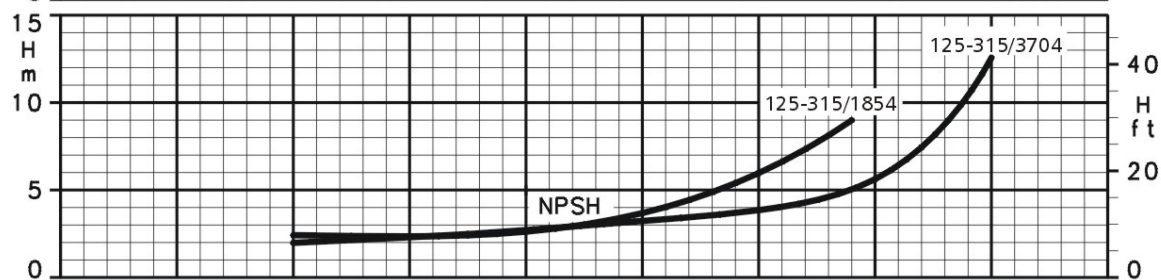
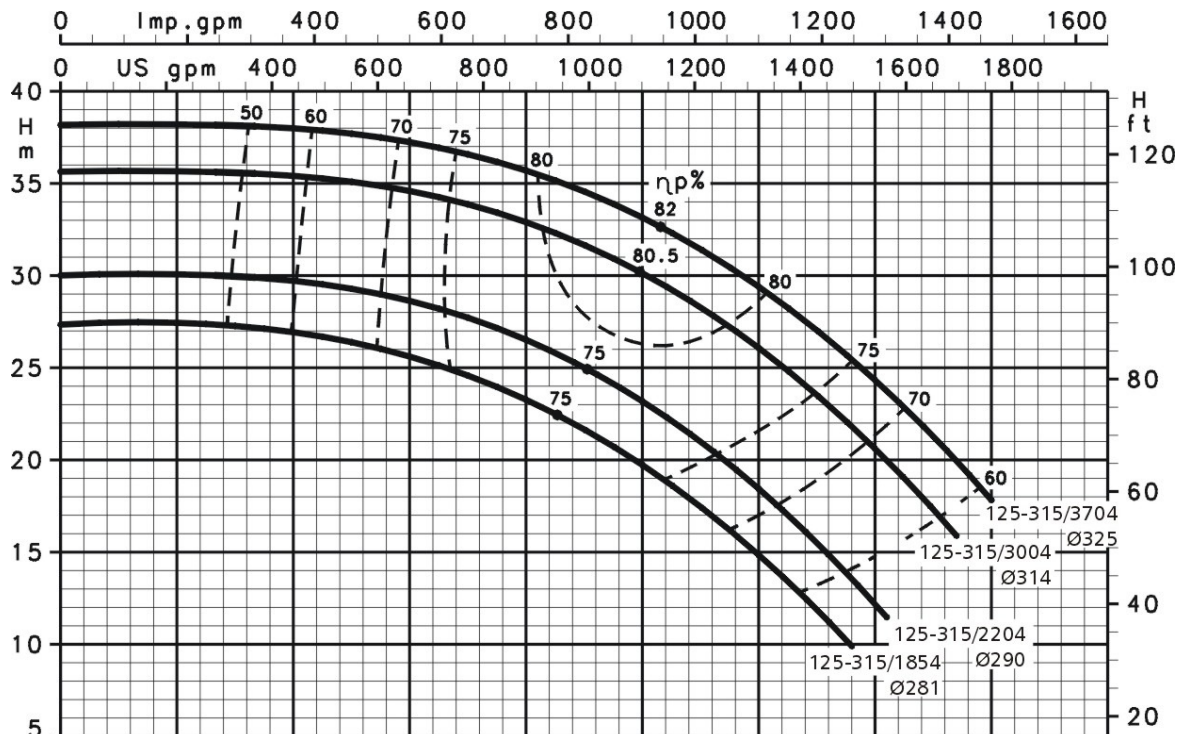
Bauart
Construction
Design

1450 min⁻¹

1100.1C230
 Rev. 1

Vogel Pumpen

Pumpengröße
grandeur de pompe
pump size

L 125-315, DN 150/125

Technische Änderungen vorbehalten!
 Modifications techniques, sans préavis, réservées!
 This leaflet is subject to alteration without notice

Kennlinien gelten für kaltes Wasser $\rho=1\text{kg/dm}^3$ und $\nu=1\text{mm}^2/\text{s}$
 Caractéristiques réfèrent à l'eau froide $\rho=1\text{kg/dm}^3$ et $\nu=1\text{mm}^2/\text{s}$
 Data refer to cold water $\rho=1\text{kg/dm}^3$ and $\nu=1\text{mm}^2/\text{s}$



ITT

VOGEL SPIRALGEHÄUSEPUMPEN
VOGEL POMPES A VOLUTES
VOGEL VOLUTE CASING PUMPS

Bauart
Construction
Design



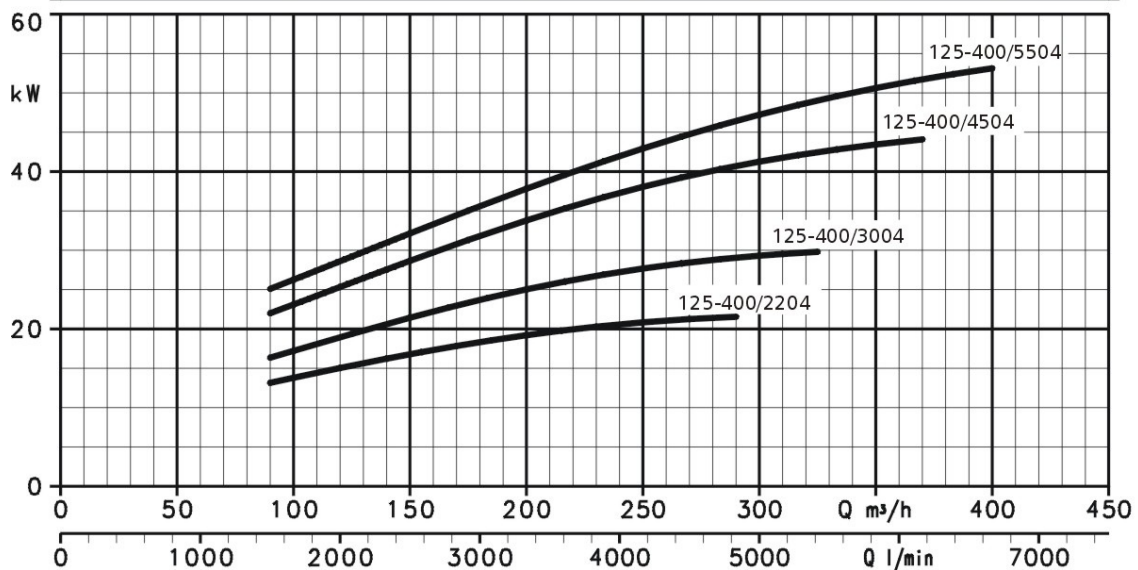
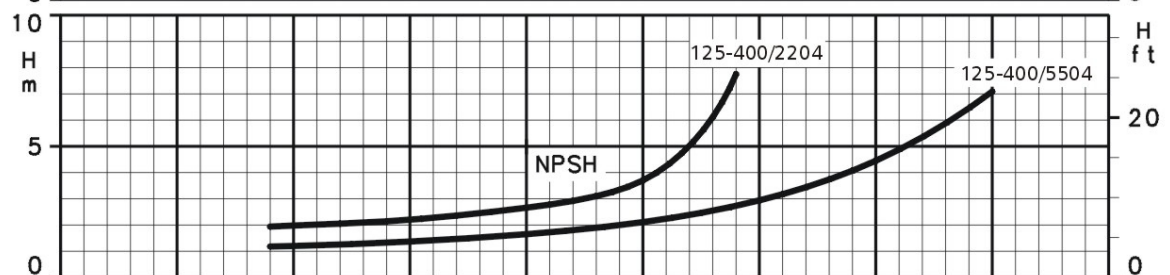
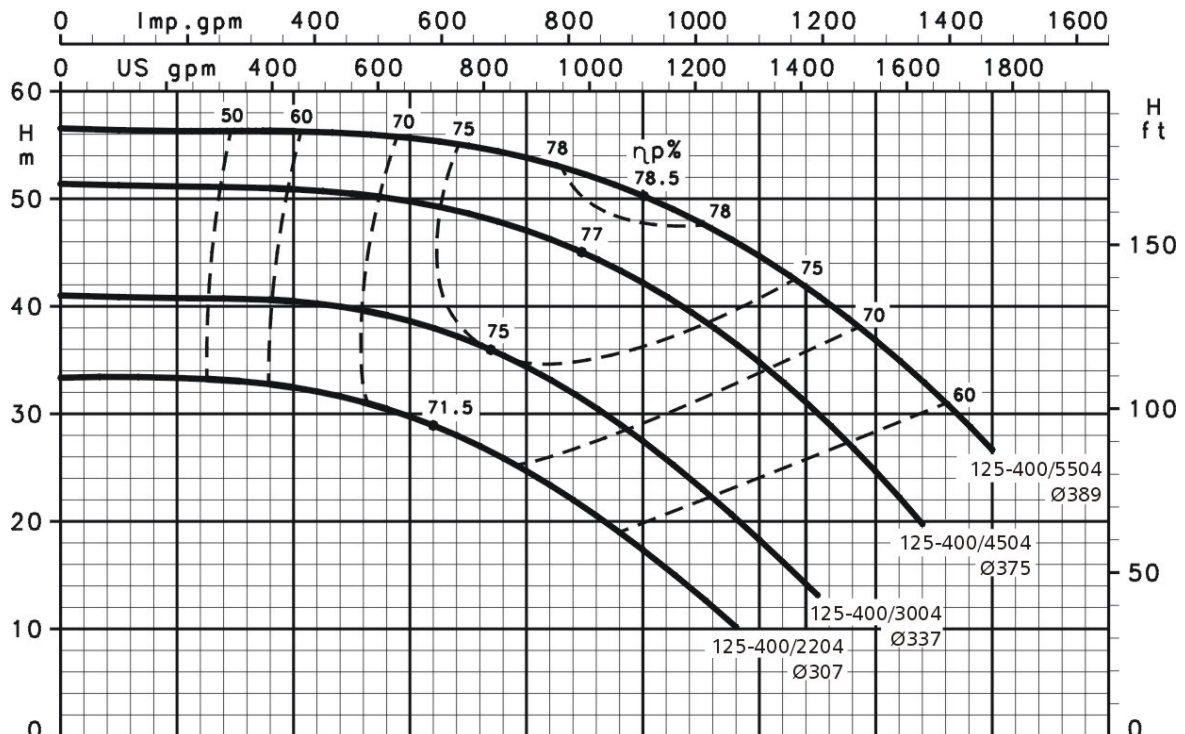
1450 min⁻¹

1100.1C231
Rev. 1

Vogel Pumpen

Pumpengröße
grandeur de pompe
pump size

L 125-400, DN 150/125



Technische Änderungen vorbehalten!
Modifications techniques, sans préavis, réservées!
This leaflet is subject to alteration without notice

Kennlinien gelten für kaltes Wasser $\rho=1\text{kg/dm}^3$ und $\nu=1\text{mm}^2/\text{s}$
Caractéristiques réfèrent à l'eau froide $\rho=1\text{kg/dm}^3$ et $\nu=1\text{mm}^2/\text{s}$
Data refer to cold water $\rho=1\text{kg/dm}^3$ and $\nu=1\text{mm}^2/\text{s}$

**ITT**

VOGEL SPIRALGEHÄUSEPUMPEN
VOGEL POMPES A VOLUTES
VOGEL VOLUTE CASING PUMPS

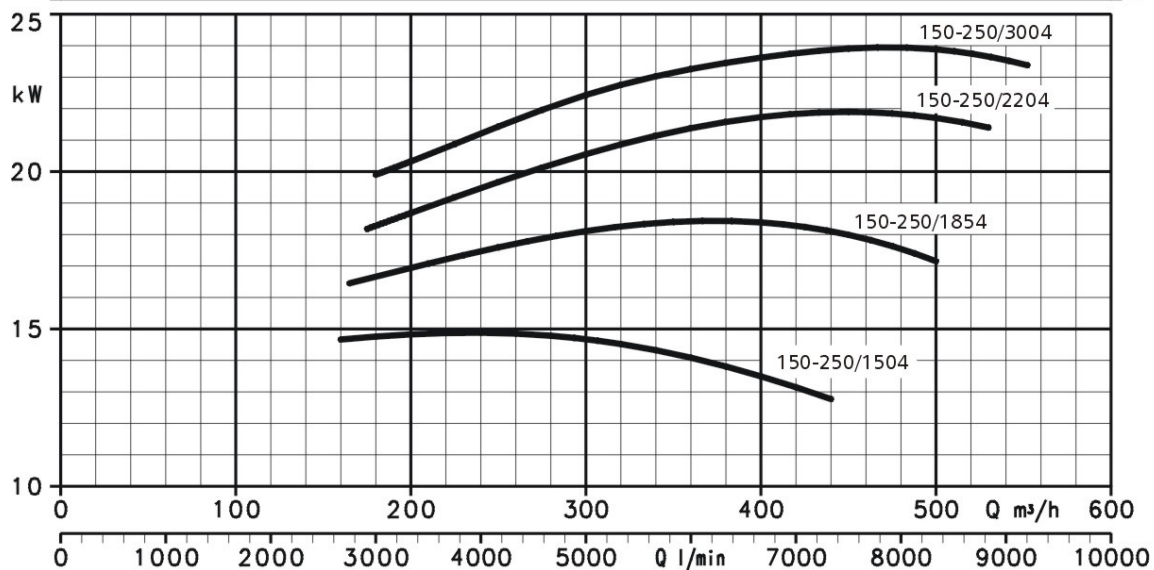
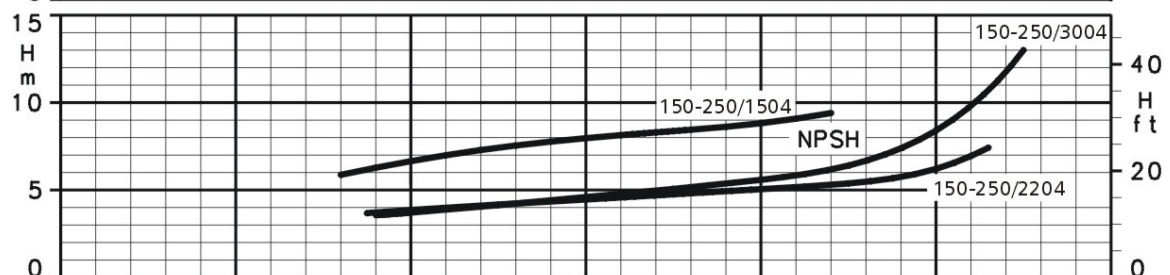
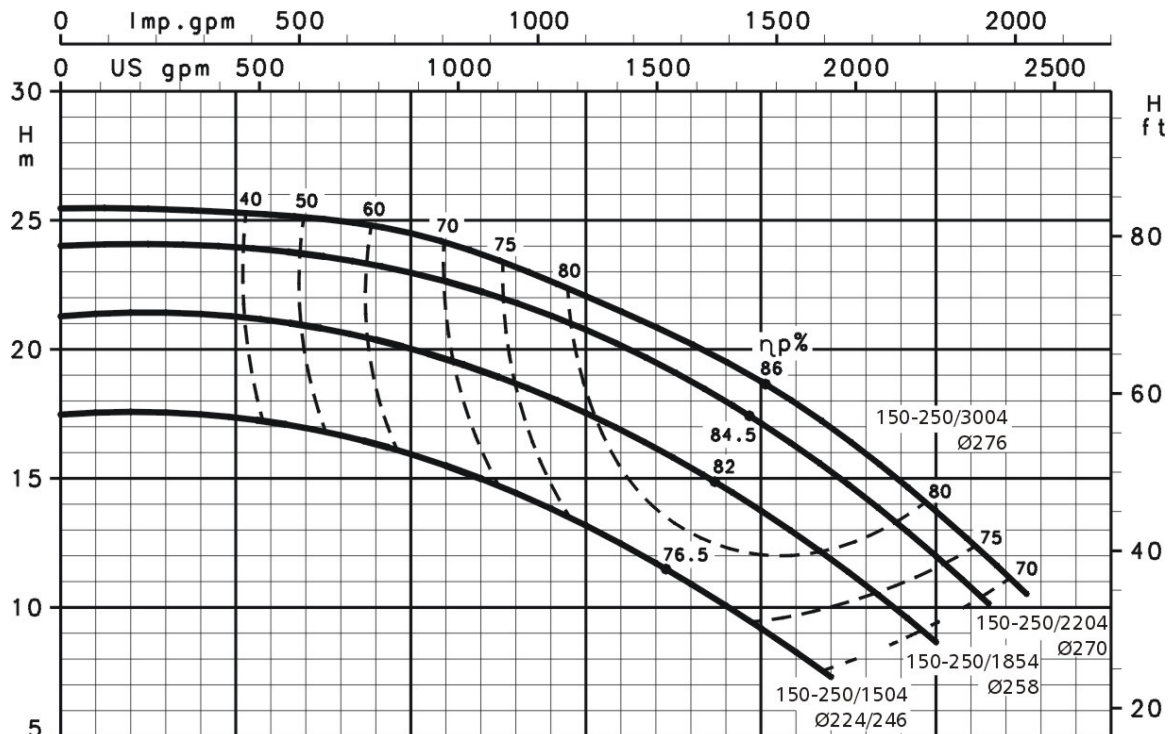
Bauart
Construction
Design

L**1450 min⁻¹**

1100.1C232
 Rev. 1

Vogel Pumpen

Pumpengröße
grandeur de pompe
pump size

L 150-250, DN 200/150

Technische Änderungen vorbehalten!
 Modifications techniques, sans préavis, réservées!
 This leaflet is subject to alteration without notice

Kennlinien gelten für kaltes Wasser $\rho=1\text{kg/dm}^3$ und $\nu=1\text{mm}^2/\text{s}$
 Caractéristiques réfèrent à l'eau froide $\rho=1\text{kg/dm}^3$ et $\nu=1\text{mm}^2/\text{s}$
 Data refer to cold water $\rho=1\text{kg/dm}^3$ and $\nu=1\text{mm}^2/\text{s}$

**ITT**

VOGEL SPIRALGEHÄUSEPUMPEN
VOGEL POMPES A VOLUTES
VOGEL VOLUTE CASING PUMPS

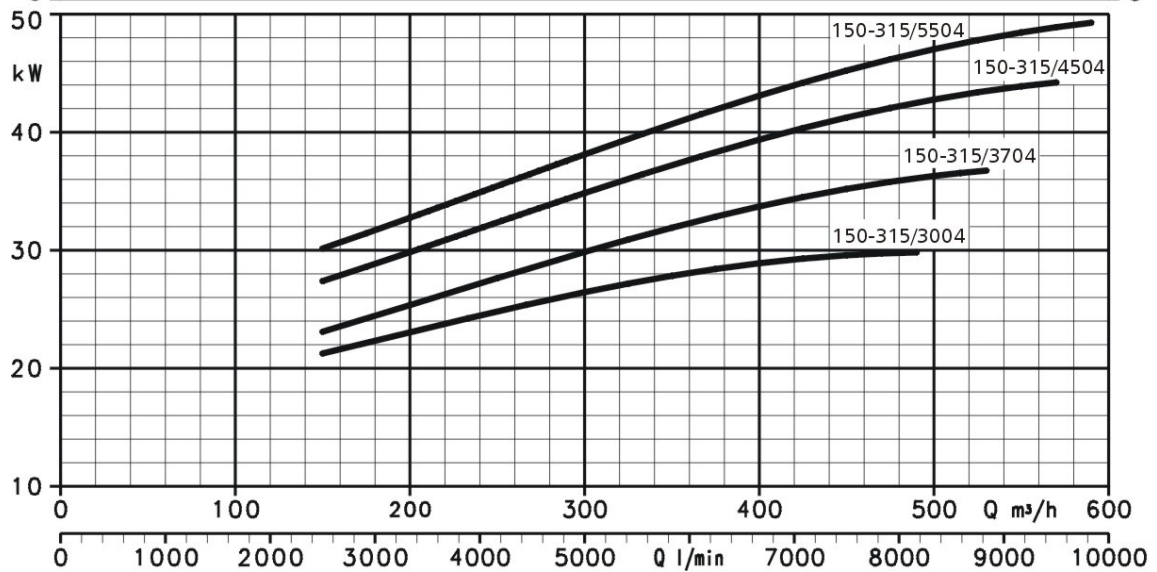
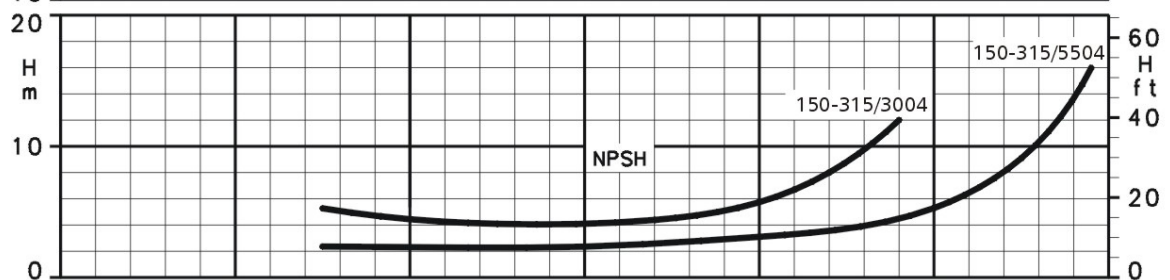
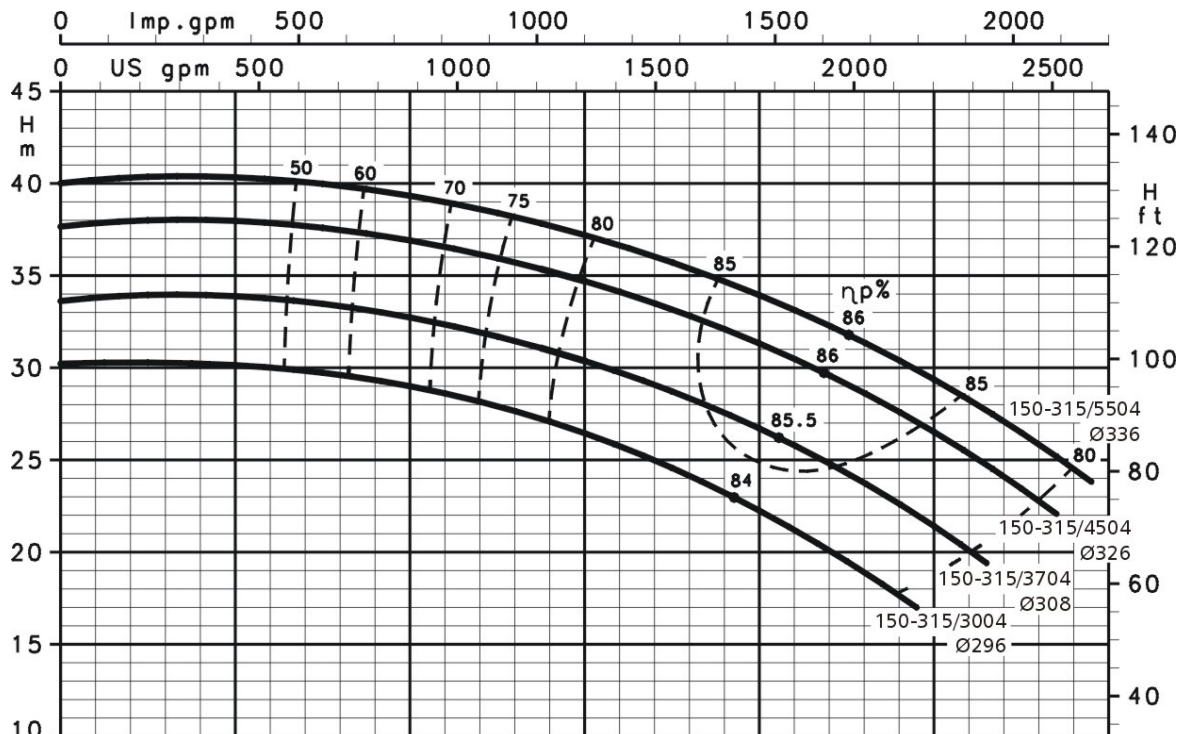
Bauart
Construction
Design

L**1450 min⁻¹**

1100.1C233
 Rev. 1

Vogel Pumpen

Pumpengröße
grandeur de pompe
pump size

L 150-315, DN 200/150

Technische Änderungen vorbehalten!
 Modifications techniques, sans préavis, réservées!
 This leaflet is subject to alteration without notice

Kennlinien gelten für kaltes Wasser $\rho=1\text{kg/dm}^3$ und $\nu=1\text{mm}^2/\text{s}$
 Caractéristiques réfèrent à l'eau froide $\rho=1\text{kg/dm}^3$ et $\nu=1\text{mm}^2/\text{s}$
 Data refer to cold water $\rho=1\text{kg/dm}^3$ and $\nu=1\text{mm}^2/\text{s}$



ITT

VOGEL SPIRALGEHÄUSEPUMPEN
VOGEL POMPES A VOLUTES
VOGEL VOLUTE CASING PUMPS

Bauart
Construction
Design

L

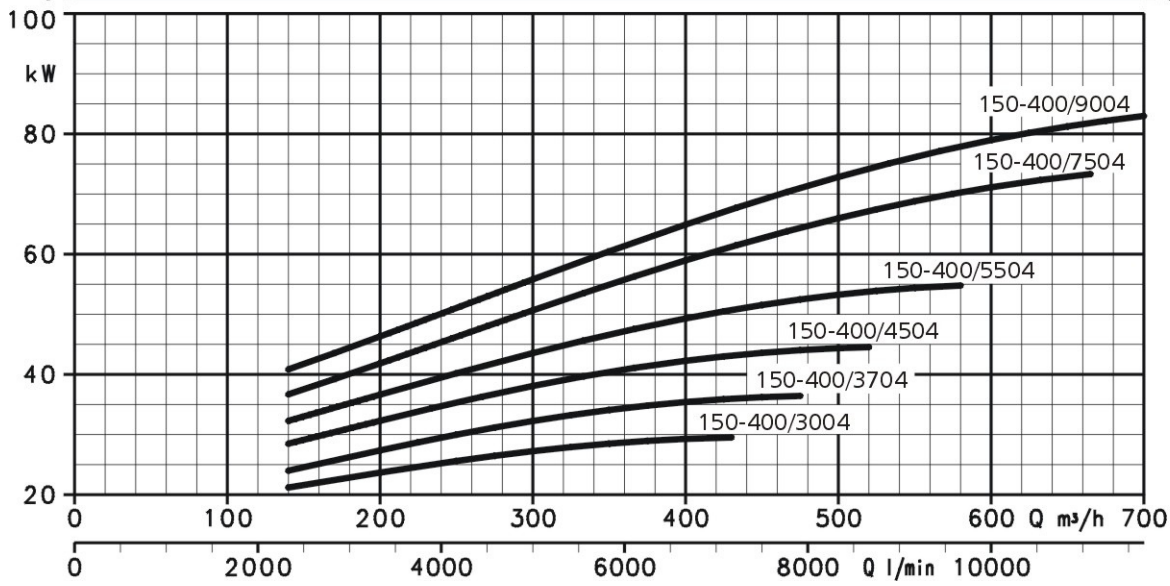
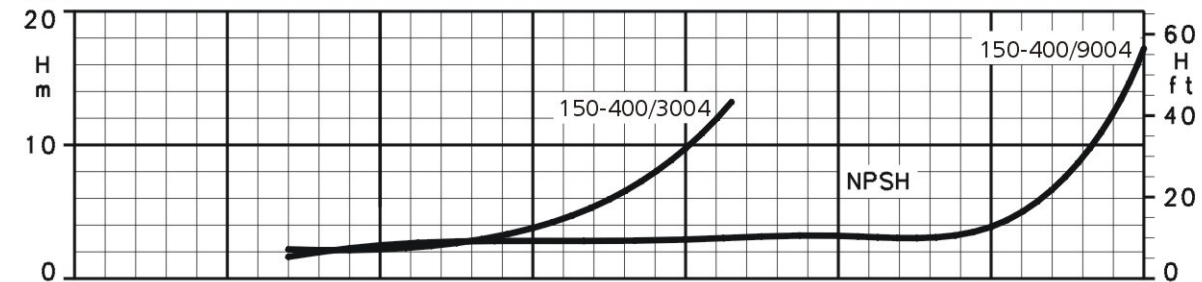
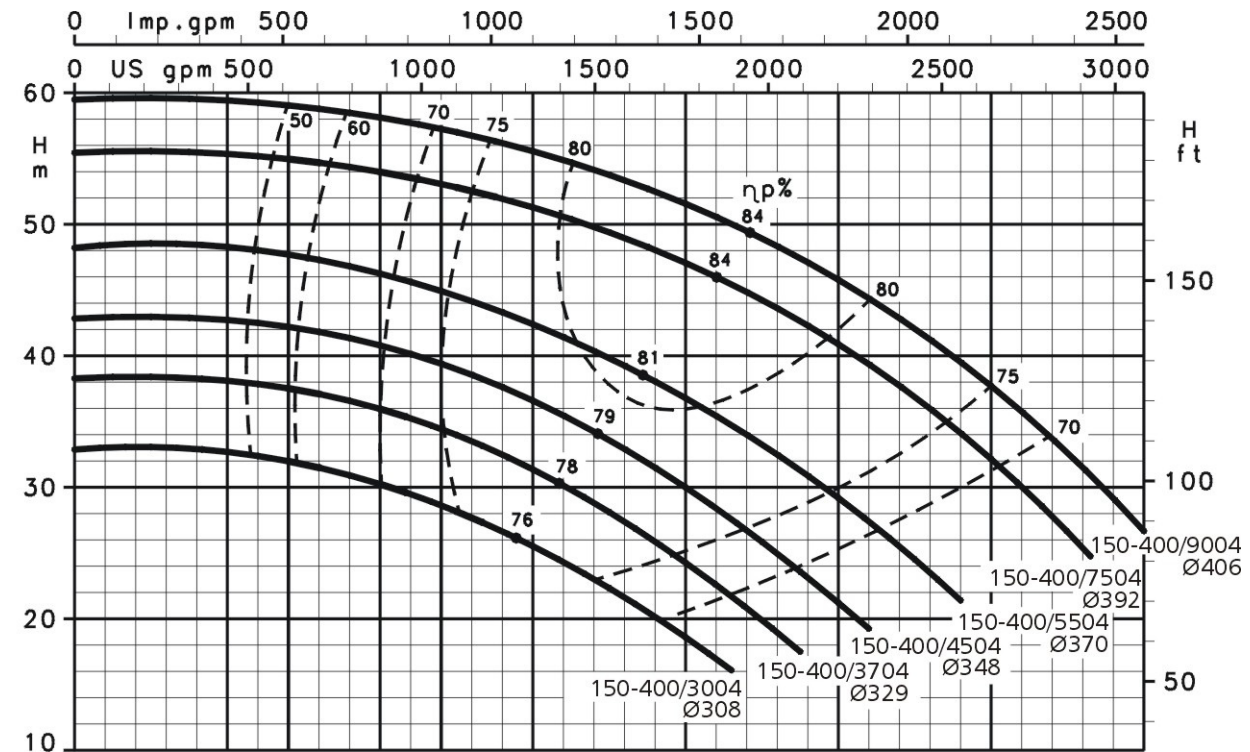
1450 min⁻¹

1100.1C234
Rev. 1

Vogel Pumpen

Pumpengröße
grandeur de pompe
pump size

L 150-400, DN 200/150



Technische Änderungen vorbehalten!
Modifications techniques, sans préavis, réservées!
This leaflet is subject to alteration without notice

Kennlinien gelten für kaltes Wasser $\rho=1\text{kg/dm}^3$ und $\nu=1\text{mm}^2/\text{s}$
Caractéristiques réfèrent à l'eau froide $\rho=1\text{kg/dm}^3$ et $\nu=1\text{mm}^2/\text{s}$
Data refer to cold water $\rho=1\text{kg/dm}^3$ and $\nu=1\text{mm}^2/\text{s}$

Pumpenfabrik ERNST VOGEL GmbH**A-2000 Stockerau**

Ernst Vogel-Straße 2

Telefon: ..43-2266-604

Telefax: ..43-2266-65311

E-Mail: info@vogel.itt.com**www.vogel-pumpen.com****Liste 1100.1.K**

Artikel Nr. 771310026

11/2007

„Hinweis gemäß Produkthaftungsgesetz:

Die angeführten Einsatzmöglichkeiten sind nur als eine Produktübersicht aufzufassen. Die genauen Einsatzgrenzen sind dem Angebot, der Auftragsbestätigung und der Betriebsanleitung zu entnehmen.“

Liability of manufacturer and/or supplier

The mentioned limits of operation and/or application are only a general information and may not be applied for every case. The permitted range of operation and/or application for the specific case is to be obtained from our acknowledgement of order and/or the instructions for installation, operation and maintenance, sent with the goods.

„Indication concernant la loi sur la responsabilité du produit:

Les possibilités d'application indiquées sont à considérer uniquement comme un aperçu de la production. Les limites d'application précises sont indiquées dans l'offre, dans la confirmation de commande ainsi que dans les instructions de service.“