

# UHP flow-through gauge Diaphragm pressure gauge, nominal size 2" Model 432.25 (FTG)

WIKA data sheet PM 04.12

## Applications

- For pressure measurement in gaseous and liquid, also aggressive media for demanding high purity applications, also in aggressive ambience
- Semiconductor and flat panel industry
- Gas distribution systems
- Medical gases
- Hook-up application



## Special features

- Dead space free media chamber
- Excellent rinsing behaviour
- Helium leak tested, leak rate  $\leq 10^{-9}$  mbar · l/s
- Case and media chamber electropolished, surface roughness  $R_a \leq 0.25 \mu\text{m}$
- All ultra high purity gas fittings available

UHP flow-through gauge, model 432.25.2" (FTG)

## Description

### Nominal size

2"

### Accuracy class

Grade B per ASME B40.1

Higher accuracy class on request

### Scale ranges

-1 ... 4 bar / -30 inHg ... 60 psi

-1 ... 9 bar / -30 inHg ... 130 psi

### Permissible temperature

Ambient: -10 ... +60 °C

Medium: +60 °C maximum

### Process connection

All ultra high purity gas fittings available

### Pressure element

Inconel

### Dial

Aluminium, white, black/red lettering,  
dual scale bar/psi

### Pointer

Aluminium, black

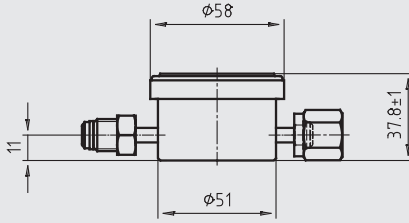
### Case

Stainless steel 316L, electropolished

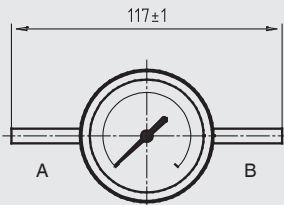
### Window

Polycarbonate, twist-lock

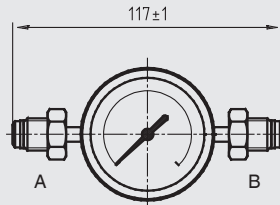
## Dimensions in mm



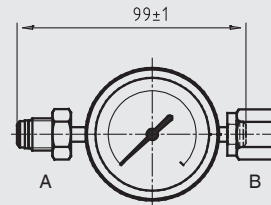
### Process connection



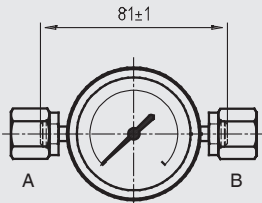
Weld-in connection on both sides  
Order code: W4W4



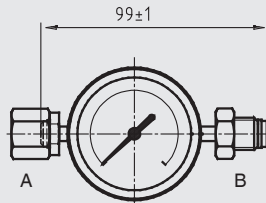
1/4" male nut on both sides  
Order code: M4M4



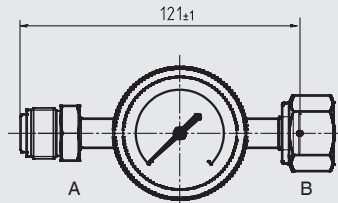
1/4" male nut / union nut  
Order code: M4F4



1/4" union nut on both sides  
Order code: F4F4



1/4" union nut / male nut  
Order code: F4M4



1/2" male nut / union nut  
Order code: M8F8

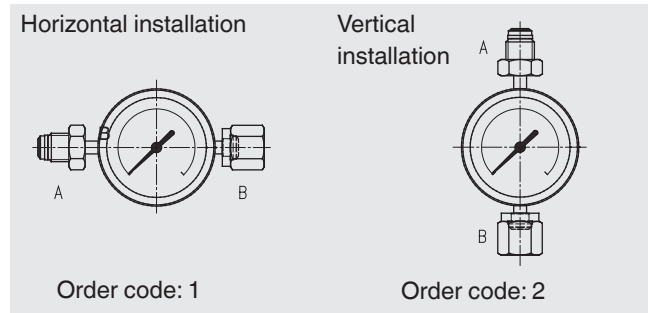
### Order code for scale ranges

Scale ranges	Order code
-1 ... 4 bar / -30 inHg ... 60 psi	S3B
-1 ... 9 bar / -30 inHg ... 130 psi	S4B

### Order code

Model	Process connection	Scale range	Mounting position								
FTG	<table border="1" style="display: inline-table; vertical-align: middle;"><tr><td style="width: 20px; height: 20px;"></td><td style="width: 20px; height: 20px;"></td><td style="width: 20px; height: 20px;"></td><td style="width: 20px; height: 20px;"></td></tr></table>					- <table border="1" style="display: inline-table; vertical-align: middle;"><tr><td style="width: 20px; height: 20px;"></td><td style="width: 20px; height: 20px;"></td><td style="width: 20px; height: 20px;"></td></tr></table>				- <table border="1" style="display: inline-table; vertical-align: middle;"><tr><td style="width: 20px; height: 20px;"></td></tr></table>	
	A      B										

### Mounting position



© 2006 WIKA Alexander Wiegand SE & Co. KG, all rights reserved.  
The specifications given in this document represent the state of engineering at the time of publishing.  
We reserve the right to make modifications to the specifications and materials.



**WIKAL**  
WIKAL Alexander Wiegand SE & Co. KG  
Alexander-Wiegand-Straße 30  
63911 Klingenberg/Germany  
Tel. +49 9372 132-0  
Fax +49 9372 132-406  
info@wika.de  
www.wika.de