

PRESSURE GAUGE WITH GLYCERIN

Ref. 1612/1613/1615/1622/1623/1625

Ref. : DS 1612

Rev. : 2

Date : 10/07

Page 1/1



Valves and fittings

90 rue du ruisseau 38297 ST QUENTIN FALLAVIER

Tel : (33) 04.74.94.15.90 Fax : (33) 04.74.95.62.08

E.mail : sferaco@sferaco.fr

SPECIFICATIONS :

- . Stainless steel box
- . With glycerin
- . 1,6 class for diameter 50 and 63
- . 1 class for diameter 100
- . Protection IP65

USE :

- . Not for viscous or crystallizing liquid
- . Not for corrosive liquid
- . Max temperature Ts : 60°C

RANGE :

- . Ref. 1612 Ø 50 Bottom connection 1/4" -1/0 à 0/160 bars
- . Ref. 1613 Ø 63 Bottom connection 1/4" -1/0 à 0/160 bars
- . Ref. 1615 Ø100 Bottom connection 1/2" -1/0 à 0/160 bars
- . Ref. 1622 Ø 50 Back connection 1/4" -1/0 à 0/160 bars
- . Ref. 1623 Ø 63 Back connection 1/4" -1/0 à 0/160 bars
- . Ref. 1625 Ø100 Back connection 1/2" -1/0 à 0/160 bars
- . Ref. 1614 Ø 63 Bottom connection 1/4" 0/1,6 à 0/60 bars Bar/psi graduation
- . Ref. 1624 Ø 63 Back connection 1/4" 0/1,6 à 0/60 bars Bar/psi graduation



Bottom connection



Back connection



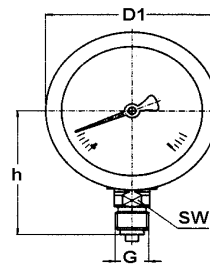
Bar/psi graduation

MATERIALS

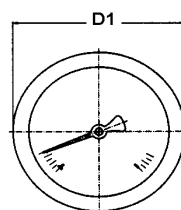
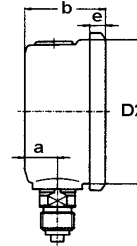
DESIGNATION	MATERIALS
Box	Stainless steel 304
Fitting	Brass
Mechanism	Brass tin welding
Dial Ø50 and Ø63	Plastic
Dial Ø 100	Duralumin
Glass	Polycarbonate
Needle	Duralumin

SIZE :

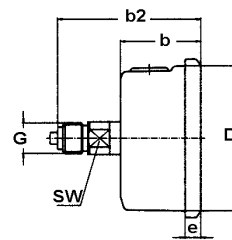
	Ø	50	63	100
Ref.	a	12	13	15,5
1612/	b	30	32	48
1613/	b2	55	56	81,5
1615/	D1	55	68	107
1622/	D2	50	62	100
1623/	e	5,5	6,5	8
1625/	f			30
	G	1/4"	1/4"	1/2"
	h	48	54	87
	SW	14	14	22
Weig.		0,15	0,21	0,8



Ref. 1612 - 1613 - 1614 - 1615



Ref. 1622 - 1623 - 1624



Ref. 1625

STANDARDS :

- . DIRECTIVE 97/23/CE : concerned by article 3, § 3

ADVICE : Our opinion and our advice are not guaranteed and SFERACO shall not be liable for the consequences of damages. The customer must check the right choice of the products with the real service conditions.