

YNK/KRHA – Boiler feed booster pumps

Industry

Water

Waste Water

Energy

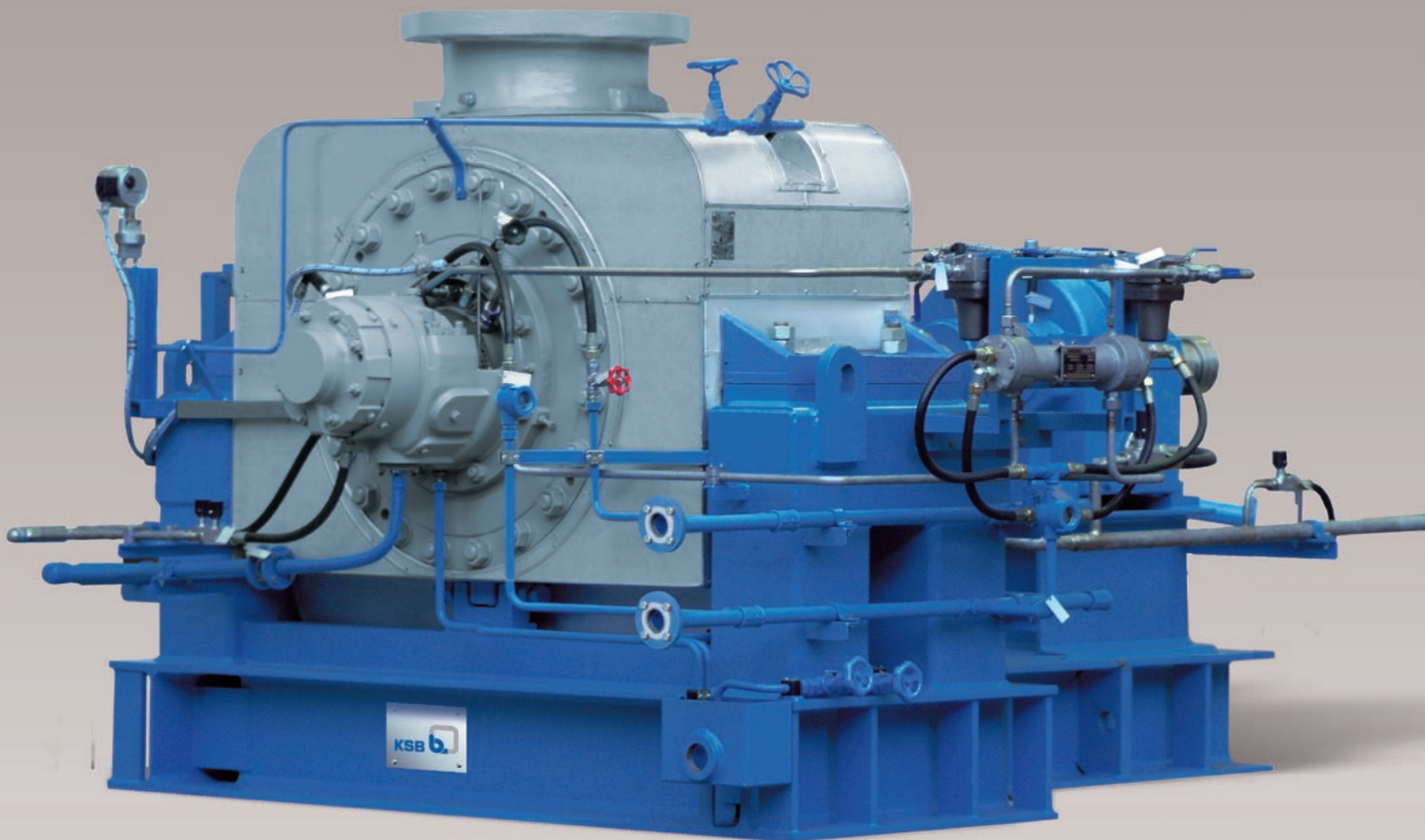
Building Services

Mining

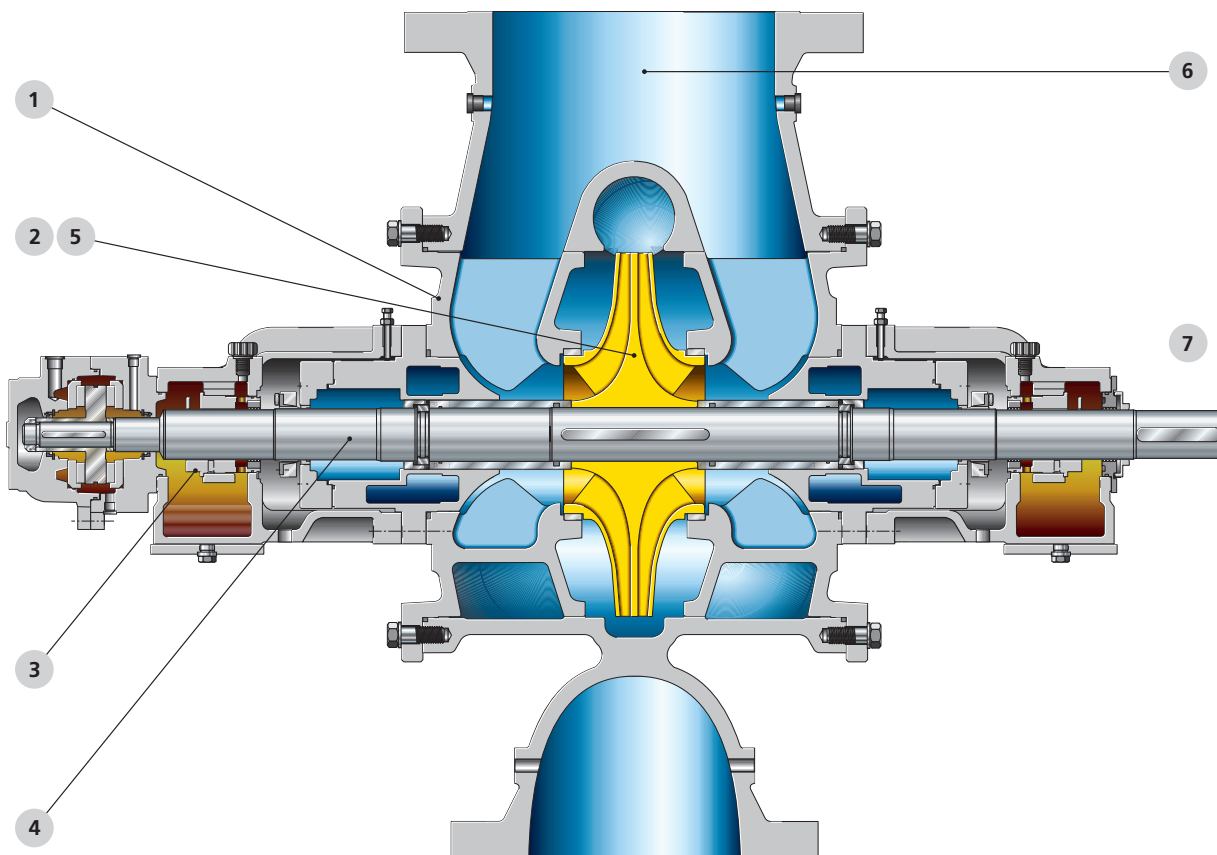
Applications:

In power stations as well as in industrial applications as a booster pump for handling boiler feed water

Further information: www.ksb.com/products



YNK/KRHA – Boiler feed booster pumps



High availability and long service life

- 1 Double volute casing minimises the radial forces
- 2 Axial thrust balanced by double-entry impeller

Several bearing types possible

- 3 Plain bearings or rolling element bearings

Ease of maintenance

- 4 Rotor removable without dismantling the piping

Reduced investment cost

- 5 Cost savings due to double-entry impeller with low NPSH

Suitable for universal use

- 6 Nozzle positions selectable to suit the customer's needs
- 7 Independent of direction of rotation

Materials:

| | |
|-----------|--------------|
| Casing: | cast steel |
| Shaft: | chrome steel |
| Impeller: | cast steel |

Technical data:*

| | |
|--------------------------|------------------------|
| Max size: | DN 505 |
| Max. capacity: | 5,50 m ³ /h |
| Max. head: | 360 m |
| Max. operating pressure: | 50 bar |
| Max. temperature: | +210 °C |

* Higher ratings on request