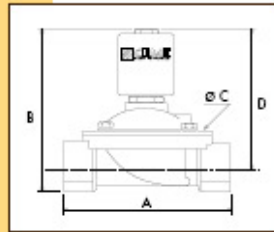


RICAMBIO	SPARE PARTS	ERSATZTEILE
1 Bello	Lock nut	Mutter
2 Rondella	Washer	Einlagenschibe
3 Bello	Coil	Magnetspule
4 Caricino	Tube guide	Flanschrohr
5 O-ring	O-ring	O-ring
6 Vite	Screw	Schraube
7 Copricapo	Valve body cap	Deckel
8 Molla	Spring	Feder
9 Anello	Ring	Ring
10 Pistone mobile	Pistone	Flanger
11 Molla	Spring	Feder
12 Pistone	Seppien	Schibe
13 Paragetto	Seal	Dichtung
14 Molla	Spring	Feder
15 Bussola	Bush	Rechse
16 Membrana	Diaphragm	Membrano
17 Bussola	Bush	Rechse
18 Corpo	Valve body base	Grundkörper

CARATTERISTICHE SPECIFICATIONS

ATTACCHI PIPES in → out	Ø mm	CODICE CODE	KV m ³ /h	M.O.P.D. bar		DIMENSIONI / DIMENSIONS mm				PESO / WEIGHT Kg
				AC	DC	A	B	C	D	
3/8"	12	8413	2.20	5	5	61	105	48	92	0.680
1/2"	12	8414	2.20	5	5	61	105	48	92	0.660
3/4"	20	8415	5.50	4	2	100	110	80	93	1.100
1"	25	8416	7.50	4	2	100	116	80	96	1.200
1" 1/4	36	8417	17.50	4	2	146	200	128	170	5.200
1" 1/2	39	8418	19.00	4	2	146	200	128	170	5.000
2"	51	8419	32.40	4	2	174	216	146	180	6.500
3/8" NPT	12	8423	2.20	5	5	61	105	48	92	0.680
1/2" NPT	12	8424	2.20	5	5	69	105	48	92	0.670



CARATTERISTICHE ELETTRICHE ELECTRICAL INFORMATION

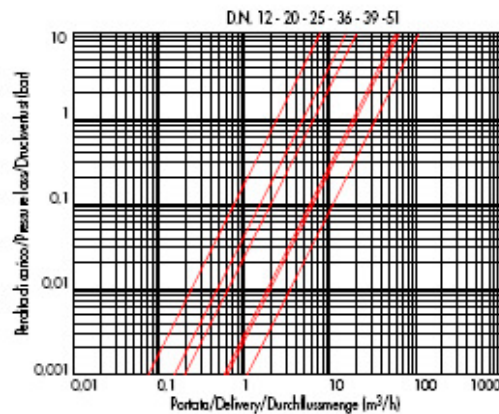
	POTENZA / POWER												
	8413-24-15-16		8417-18-19										
V~	12	24	48	110	230	400	50	60	Hz	18VA	47VA	140VA	430VA
V=	12	24	48	110						14W		43W	

Per dettagli costruttivi sulle bobine vedi capitolo "INFORMAZIONI DI PROGETTO"
For construction details of the coils see chapter "PROJECT INFORMATION"
Ausführliche Daten über die Ventilsolen finden Sie unter Abschnitt "TECHNISCHE INFORMATIONEN"

MAX TEMPERATURA MAX TEMPERATURE

FLUIDI / FLUIDS				AMBIENTE / AMBIENT
NBR	EPDM	EPDM-KTW	FPM	
90°C	90°C	90°C	90°C	80°C

DIAGRAMMA PERDITA DI CARICO PRESSURE LOSS DIAGRAM



8413
8414
8415
8416
8423
8424



8417
8418
8419



serie 84

ELETTROVALVOLA SERVOASSISTITA 2/2 VIE N.C.
SOLENOID VALVE SERVO-ACTUATED 2/2 WAY N.C.
ZWANGSGESTEUERTES MAGNETVENTIL 2/2 WEGE S.G.



KTW



I

CARATTERISTICHE GENERALI

PRESSIONE MINIMA DIFFERENZIALE DI FUNZIONAMENTO 0 bar

PARTI A CONTATTO CON IL FLUIDO

TENUTA

NBR a richiesta FPM - EPDM
 EPDM-KTW tenuta adatta e certificata DVGW per l'intercettazione di acqua potabile

CORPO

OTTONE

ORGANI INTERNI

ACCIAIO INOX

FLUIDI

ACQUA - ARIA - OLII LEGGERI

VALVOLA UNIDIREZIONALE

VALVOLA ISPEZIONABILE

VALVOLA FORNITA CON

POSIZIONE DI MONTAGGIO

CONNETTORE TRIPOLARE UNI ISO 4400 (DIN 43650A) - IP65

Si consiglia di montare la valvola con la bobina rivolta verso l'alto. I modelli 8417, 8418, 8419 devono essere installati in posizione orizzontale con bobina rivolta verso l'alto. 80°C, in D.C. per temperature superiori a 40°C, le performance (M.O.P.D.) potrebbero diminuire.

TEMPERATURA AMBIENTE

80°C, in D.C. per temperature superiori a 40°C, le performance (M.O.P.D.) potrebbero diminuire.

ESECUZIONI SPECIALI

VERSIONE ANTI COLPO D'ARIETE CON TEMPO DI CHIUSURA + PDV LENTO.
 PER I MODELLI 8415 e 8416 È DISPONIBILE LA BOBINA B20 (30 W) PER AUMENTARE LA PRESTAZIONE IN D.C. (M.O.P.D.) A 4 BAR.

UK

GENERAL FEATURES

MINIMUM DIFFERENTIAL WORKING PRESSURE: 0 bar

PARTS IN CONTACT WITH THE FLUID

SEALING

NBR on request FPM - EPDM
 EPDM-KTW sealing approved and DVGW certified for interception of potable water

BODY

BRASS

INTERNAL PARTS

STAINLESS STEEL

FLUIDS

WATER- AIR - LIGHT OILS

ONE WAY DIRECTION VALVE

SERVICEABLE VALVE

VALVE SUPPLIED WITH

MOUNTING POSITION

THREE POLE PLUG CONNECTOR UNI ISO 4400 (DIN 43650A)-IP65

We advice installation of the valve with the coil vertical. Models 8417,8418,8419 must be mounted in the horizontal position with the coil vertical.

AMBIENT TEMPERATURE

80°C, in D.C. for temperatures higher than 40°C, the performances (M.O.P.D.) could decrease.

SPECIAL EXECUTIONS

VERSION WITH WATER HAMMER DEVICE FOR SLOWER CLOSING TIME
 FOR MODELS 8415 AND 8416 , COIL TYPE B20 (30 W) IS AVAILABLE TO INCREASE PERFORMANCES (M.O.P.D.) IN D.C. TO 4 BAR.

D

ALLGEMEINE MERKMALE

MINIMALER DIFFERENTIALARBEITSDRUCK 0 bar

MEDIUMS BERTUEHRTE TEILE

DICHTUNG

NBR auf Nachfrage FPM - EPDM
 EPDM-KTW Dichtung DVGW-KTW zertifiziert fuer den Trinkwassereinsatz.

KOERPER

MESSING

INNERE ELEMENTE

EDELSTAHL

MEDIUM

WASSER - LUFT - LEICHTE OELE

UNIDIREKTIONALES VENTIL

VENTIL WARTUNGSFREUNDLICH

LIEFERUMFANG

DREIPOLIGER STECKER UNI ISO 4400 (DIN 43650A)-IP65

MONTAGEPOSITION

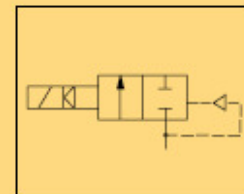
Es wird empfohlen das Ventil mit der Spule senkrecht nach oben einzubauen.
 Die Modelle 8417,8418,8419 muessen mit der Spule senkrecht nach oben eingebaut werden.
 80°C, im D.C.- Betrieb koennen Temperaturen ueber 40°C, die Schaltkraefte (M.O.P.D.) des Ventils beeintraechtigen.

UMGEBUNGSTEMPERATUR

80°C, im D.C.- Betrieb koennen Temperaturen ueber 40°C, die Schaltkraefte (M.O.P.D.) des Ventils beeintraechtigen.

SONDERAUSFUEHRUNGEN

AUSFUEHRUNG LANGSAM SCHLIESSEND
 FUER DIE MODELLE 8415 UND 8416 IST DIE SPULE B20 (30 W) VERFUEGBAR UM DIE SCHALTKRAEFTE (M.O.P.D.) IN D.C. AUF 4 BAR ZU ERHOEHEN.



8413-8414-8415-8416-8423-8424

BOBINA TIPO B12

COIL TYPE B12

SPULE TYP B12



8417-8418-8419

BOBINA TIPO B60

COIL TYPE B60

SPULE TYP B60

serie 84