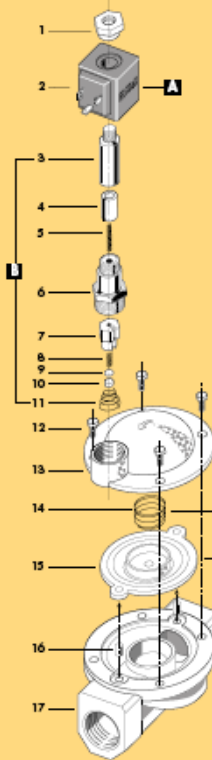
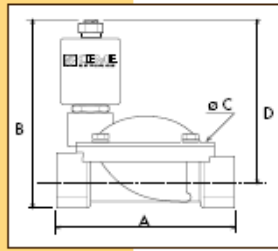


CARATTERISTICHE SPECIFICATIONS

ATTACCHI PIPES In → out	Ø mm	CODICE CODE	Kv m ³ /h	M.O.P.D. bar		DIMENSIONI/ DIMENSIONS mm				PESO/ WEIGHT Kg
				AC	DC	A	B	C	D	
3/8"	10	8713	1.86	10	10	61	95	48	83	0.600
1/2"	12	8714	2.10	10	10	61	95	48	83	0.550
3/4"	20	8715	5.70	10	10	87	107	69	91	0.850
1"	25	8716	9.60	10	10	100	113	80	93	1.100
1" 1/4	32	8717	22.00	10	10	131	128	112	101	2.700
1" 1/2	39	8718	27.00	10	10	146	135	128	105	3.000
2"	51	8719	35.00	10	10	174	151	146	114	4.500
2" 1/2	65	8720	63.00	10	10	245	186	184	140	9.500
3"	75	8721	83.00	10	10	250	196	184	145	11.230
3/8"NPT	12	8723	2.10	10	10	61	95	48	83	0.600
1/2"NPT	12	8724	2.10	10	10	61	95	48	83	0.560
3/4"NPT	20	8725	5.70	10	10	87	107	69	91	0.850
1"NPT	25	8726	9.60	10	10	108	113	80	93	1.130



1	Dado	Lock nut	Mutter
2	Bobina	Coil	Magnetspule
3	Camotto	Tubo guida	Plangarnir
4	Necklo seal	Plunger	Plunger
5	Wella	Spring	Feder
6	Canesso-Necklo fisso	Tubo guida-Tube top	Plangarnir-Korn
7	Otturatore	Shetter	Verschluss
8	Wella	Spring	Feder
9	Plattella	Support	Schelle
10	Pastiglia	Seal	Dichtung
11	Wella	Spring	Feder
12	Vite	Screw	Schraube
13	Coperchia	Valve body top	Deckel
14	Wella	Spring	Feder
15	Membrana	Diaphragm	Membrana
16	Bussola	Bush	Buchse
17	Corpo	Valve body base	Grundkörper

RICAMBI	SPARE PARTS	ERSATZTEILE
A Bobina	Coil	Magnetspule
B Gruppo pilota	Pilot unit	Verschlußeinheit komplett
C Wella	Spring	Feder
D Membrana	Diaphragm	Membrana

**CARATTERISTICHE ELETTRICHE
ELECTRICAL INFORMATION**

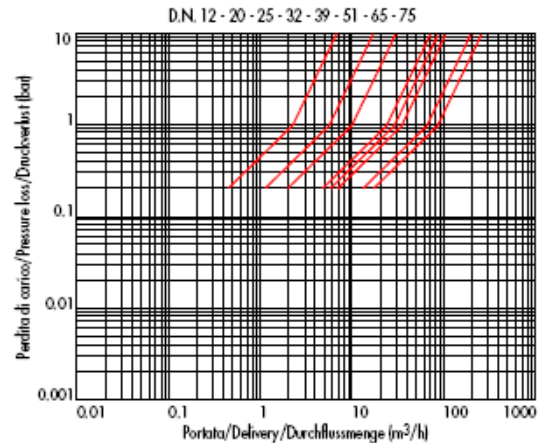
V~	12	24	48	110	230	400	POTENZA/POWER	
							NOMINALE NOMINALE	SPUNTO IN RUSH
							50	60
								Hz
V=	12	24	48	110				15VA
								25VA
								16W

Per dettagli costruttivi sulle bobine vedi capitolo "INFORMAZIONI DI PROGETTO"
For construction details of the coils see chapter "PROJECT INFORMATION"
Ausführliche Daten über die Ventilspeulen finden Sie unter Abschnitt "TECHNISCHE
INFORMATIONEN"

MAX TEMPERATURA MAX TEMPERATURE

FLUIDI/FLUIDS				AMBIENTE/AMBIENT
NBR	EPDM	EPDM-KTW	FPM	80°C
90°C	130°C	130°C	150°C	

DIAGRAMMA PERDITA DI CARICO PRESSURE LOSS DIAGRAM



serie 87

**ELETTROVALVOLA SERVOCOMANDATA 2/2 VIE N.A.
SOLENOID VALVE PILOT OPERATED 2/2 WAY N.O
SERVOGESTEUERTES MAGNETVENTIL 2/2 WEGE S.O.**



KTW

I CARATTERISTICHE GENERALI
PRESSIONE MINIMA DIFFERENZIALE DI FUNZIONAMENTO 0,3 bar

PARTI A CONTATTO CON IL FLUIDO

TENUTA	NBR a richiesta FPM EPDM EPDM-KTW tenuta adatta e certificata DVGW per l'intercettazione di acqua potabile
CORPO	OTTONE
ORGANI INTERNI	ACCIAIO INOX
FLUIDI	ACQUA - ARIA - OLII LEGGERI
VALVOLA UNIDIREZIONALE	
VALVOLA ISPEZIONABILE	
VALVOLA FORNITA CON	CONNETTORE TRIPOLARE UNI ISO 4400 (DIN 43650A)-JP 65
POSIZIONE DI MONTAGGIO	Qualsiasi; sconsigliata quella con bobina rivolta verso il basso
TEMPERATURA AMBIENTE	80°C, in D.C. per temperature superiori a 40°C, le performance (M.O.P.D.) potrebbero diminuire
ESECUZIONI SPECIALI	VERSIONE ANTI COLPO D'ARIETE CON TEMPO DI CHIUSURA PIU' LENTO VERSIONE CON MEMBRANA RINFORZATA X UTILIZZO AD ALTA PRESSIONE E ALTA FREQUENZA DI INTERVENTO (DISPONIBILE X MODELLI 8715 - 8716 - 8717 - 8718 - 8719)

UK GENERAL FEATURES
MINIMUM WORKING PRESSURE 0,3 bar
PARTS IN CONTACT WITH THE FLUID SEALING
NBR, on request FPM - EPDM
EPDM - KTW sealing approved and sealing approved and DVGW certified for interception of potable water

BODY
INTERNAL PARTS
FLUIDS
WATER - AIR - LIGHT OILS

ONE WAY DIRECTION VALVE
SERVICEABLE VALVE
VALVE SUPPLIED WITH
MOUNTING POSITION
AMBIENT TEMPERATURE

THREE POLE PLUG CONNECTOR UNI ISO 4400(DIN 43650A)-JP65
Any, the position with the coil downwards is not recommended.
80°C, in D.C. for temperatures higher than 40°C, the performances (M.O.P.D.) could decrease.

SPECIAL EXECUTIONS
-VERSION WITH WATER HAMMER DEVICE FOR SLOWER CLOSING TIME
-VERSION WITH REINFORCED DIAPHRAGM FOR HIGH PRESSURE USE AND HIGH FREQUENCY APPLICATIONS (AVAILABLE for MODELS 8715-8716-8717-8718-8719)

D ALLGEMEINE MERKMALE
MINIMALER ARBEITSDRUCK 0,3 bar
MEDIUMS BERUEHRTTE ELEMENTE DICHTUNG
NBR, auf Nachfrage FPM -EPDM
EPDM - KTW Dichtung DVGW-KTW zertifiziert fuer den Trinkwassereinsatz.

KOERPER
INNERE ELEMENTE
MESSING
EDELSTAHL

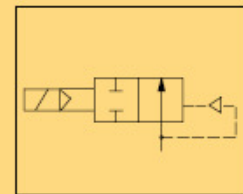
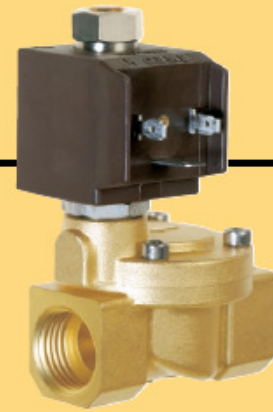
MEDIEN
UNIDIREKTIONALES VENTIL
WASSER - LUFT - LEICHTE OELE

VENTIL WARTUNGSFREUNDLICH
LIEFERUMFANG
DREIPOLIGER STECKER UNI ISO 4400 (DIN 43650A) -JP65

MONTAGEPOSITION
Keine Einschränkungen. Fuer Montage mit dem Spulenkopf senkrecht nach unten, auf Anfrage.

UMGEBUNGSTEMPERATUR
80°C, im D.C- Betrieb koennen Temperaturen ueber 40°C, die Schaltkraefte (M.O.P.D.) des Ventils beeintraechtigen.

SONDERAUSFUEHRUNGEN
-ERSION LANGSAM SCHLIESSEND
-VERSION MIT VERSTAERKTER MEMBRANE FUER DEN EINSATZ MIT HOHEN DRUECKEN UND HOHER SCHALTHAEUFIGKEIT (VERFUEGBAR FUER MODELLE 8715-8716-8717-8718-8719)



BOBINA TIPO B6 NA
COIL TYPE B6 NA
SPULE TYP B6 NA

serie 87