

802

Non-return disc valve

W System

Technical Data Sheet



Description

- High performances in pressure and temperature
- Operates in any position
- Easy to install and dismantle, space-saving
- Minimum head loss
- Does not generate hammering
- Closing system : disc with parabolic edges with return spring ; lateral guiding by 3 or 4 ribs (DN 32 to 100)
- Closing system with back axial guiding and return spring (DN 125 to 200)
- Metal/metal tightness (obturator on machined seat)



802

Non-return disc valve - W system

DN	PN	PFA in bar	PS in bar				Cat.	Ref.	Weight Kg
			L1	L2	G1	G2			
1 1/4	32	6/16	16	16	16	16	I	149B2413	0,35
1 1/2	40	6/16	16	16	16	16	I	149B2414	0,52
2	50	6/16	16	16	16	16	I	149B2415	0,73
2 1/2	65	6/16	16	16	15	16	I	149B2416	1,52
3	80	6/16	16	16	12	16	I	149B2417	2,17
4	100	6/16	16	16	10	16	I	149B2418	3,35
5	125	10/16	16	16	0,5	16	I	149B2439	8,55
6	150	10/16	16	13	0,5	16	I	149B2440	12,70
8	200	10/16	16	10	0,5	16	I	149B2441	23,40

For DN 1/2", 3/4" and 1", see type 812

Important notice :

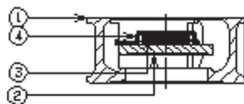
The indicated pressure for the different categories of fluids (L1/L2/G1/G2) is under no condition a guarantee of use. Therefore, it is essential to validate the use of products under given operating conditions. The operating instructions are available on our web site www.socla.com or by requesting from our sales department.

Technical features

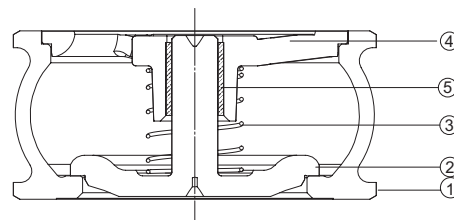
Operating temperature	-10 °C to 200 °C (DN 65 to 200 mm : 100 °C)
Permissible operating pressure (PFA) in water	See table above
Maximum permissible pressure (PS) other mediums	See table above
Connection	Between flanges, PN (see table)
Mediums	Clear liquids
Leakage rate	According to EN 12266-1 rate E

Nomenclature and materials

DN 1"1/4 - 4"



DN 5" - 8"



N°	Designation	Materials	EURO	ANSI	
1	Body	DN 32 - 50	Brass DZR	CuZn35Pb2Al-C	
		DN 65 - 100	Cast iron / Epoxy ext	EN-GJL-250	ASTM A 48 35 B
		DN 125 - 200	Cast iron / Epoxy ext	EN-GJS-400-15	ASTM A 536 60-40-18
2	Closing system	DN 32 - 100	Stainless steel	X2CrNiMo17-12-2	AISI 316L
		DN 125 - 200	Cast iron / Epoxy	EN-GJL-250	ASTM A 48 35 B
3	Spring	Stainless steel	X10CrNi18-8	AISI 302	
4	Stop/guide	DN 32 - 150	Stainless steel	X2CrNiMo17-12-2	AISI 316L
		DN 200	Cast iron / Epoxy	EN-GJL-250	ASTM A 48 35 B
5	Ring	Bronze	CuSn12-C		

Approvals



International construction Standards :

Directive 2014/68/UE
 Connection according to ASA B16.1 125RF class
 Connection according to EN 1092.2
 Overall dimensions according to EN 558.1 49 series

Application

Heating, industrial applications.

Use of these valves on circuits equipped with piston pump or piston compressor is not recommended.

Installation

Installation :

Before putting valve into operation, check that:

- the working conditions are compatible with the details given on the identification plate, the instruction notice and the manufacturer's detail,
- the valve works effectively when tried (carry out a few opening and closing operations of the closing system),
- the valve is free-pollution inside.

On a new installation or after maintenance, the circuit must be rinsed with the valve completely open in order to remove solid matter which may damage the internal parts of the valve.

Commissioning :

The installation should be put under pressure progressively to avoid damage which might occur to internal components.

Make sure that when flow stops the valve maintains pressure well and that there is no water-hammer which might damage the valve or installation.

If there is water-hammer, an anti-water hammer system must be added to the installation.

During a prolonged stoppage, a change in the state of the fluid may result in damage when the installation is brought back into service (solidification...).

Establish an adequate procedure program for cleaning the system.

Maintenance

Maintenance and repair work must be carried out by qualified personnel. During opening and closing tests, the operator must be careful not to put fingers or any other object in the trajectory of the closing system. Manipulate the valve and its components carefully to avoid damage.

Removing the valve from the installation :

The pipe must be depressurised and purged (emptied of its fluid) in order to avoid any danger to the operator. If the installation has carried fluids which are dangerous in themselves if in contact with the outside atmosphere (inflammable, corrosive, toxic, explosive..) it must be thoroughly cleaned to eliminate all risks. All fluid remaining in the valve must be removed.

The temperature of the valve must be lower than 35°C to avoid all risk of burning.

If necessary, perform the operation using suitable protection (clothing, gloves, mask...)

WARNING: In the case of use in an ATEX zone, electrostatic charges may be present in the internal parts of the valve. These electrostatic charges created by the flow of the fluid may present a risk of explosion. The user is responsible for taking all possible precautions against this risk.

• Maintenance of the valve :

All spare parts must be genuine Socla. All the parts in the maintenance kit must be used.

The list of spare parts are given in the technical datasheets.

The reference number of the valve and the manufacture serial number indicated on the identification plate must be quoted in any request for spare parts and during any claim or return of parts.

Using grease is not permitted in a « silicone-free » environment. Grease must be compatible with the fluid being carried and the constraints of the installation.

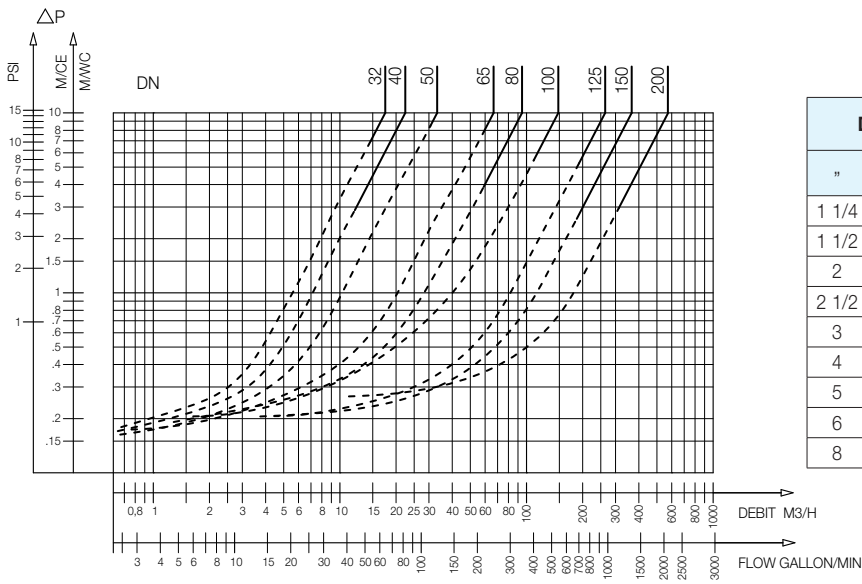
After maintenance, it is recommended that the valve be re-tested by a trial under pressure at 1.5 X PMA (test P11 according to the standard EN12266-1).

In the case of use in an ATEX zone this test is compulsory.

- Check the continuity between the closing system and the free end of the braided wire using an ohmmeter (test according to the standard EN 12266-2 annexe B, point B. 2.2.2. and B.2.3.1).

In the case of use in an ATEX zone this test is compulsory.

Operation

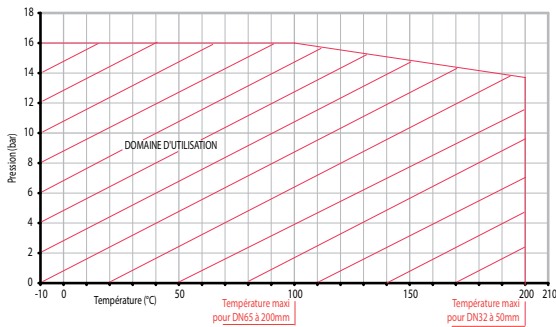


DN	Opening pressure in mm/CE	Kv	ζ
1 1/4	190	17,51	5,45
1 1/2	200	22,40	8,20
2	210	33,20	9,00
2 1/2	210	66,60	6,40
3	226	91,50	7,80
4	235	148,50	7,25
5	335	264,70	5,60
6	360	366,00	6,00
8	515	572,50	7,80

Direction for use :

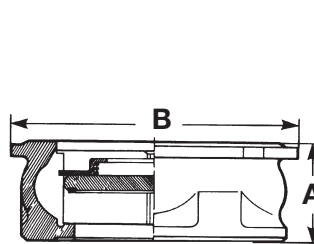
- Solid line: Valve completely open
- Dotted line: opening stage of valve

Pressure/Temperature Diagram

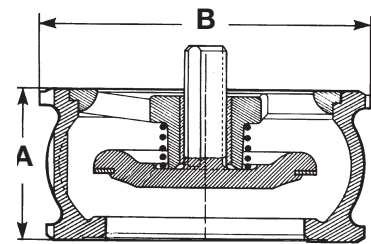


Sizing

DN	A	B - PN6	B PN10/16/ASA150
1 1/4	28	78	84
1 1/2	31,5	88	94
2	40	98	109
2 1/2	46	118	129
3	50	134	144
4	60	154	162
5	90	-	192
6	106	-	218
8	140	-	273



802 - DN 1"1/4 - 4"



802 - DN 5" - 8"

The descriptions and photographs contained in this product specification sheet are supplied by way of information only and are not binding.

Socla reserves the right to carry out any technical and design improvements to its products without prior notice. Warranty : All sales and contracts for sale are expressly conditioned on the buyer's assent to Socla terms and conditions found on its website at www.socla.com. Socla hereby objects to any term, different from or additional to Socla terms, contained in any buyer communication in any form, unless agreed to in a writing signed by an officer of Socla.



A WATTS Brand

Socla sas

365 rue du Lieutenant Putier • 71530 Virey-Le-Grand • France

Tel. +33 03 85 97 42 00 • Fax +33 03 85 97 42 42

contact@wattswater.com • www.socla.com

ISO 9001 version 2015 / ISO 18001