

212S

Non-return axial guided valve
02 System

Technical Data Sheet



Description

A non-return valve is compatible with many types of fluids and can be adapted to a wide range of installations. However, each of these installations comes with their own particular constraints : mechanical, hydraulic, physical or chemical. The O2 system offers the best compromise between hydraulic performance, ruggedness, sealing-tightness and cost effectiveness with any kind of liquids (subject to a validation of our recommendation service).

Our valves meet the requirements of the Pressure Equipment Directive 2014/68/UE. This range extends from 65 to 200 mm. By its technology, it operates in any position. It's compact and it doesn't generate hammering.



212S

Non-return axial guided valve - O2 System

DN		PFA in bar	PS in bar				Cat.	Ref.	Weight Kg
"	mm		L1	L2	G1	G2			
2 1/2	65	40	30	40	15	40	I	149B2454GS	2,7
3	80	40	25	40	12	40	I	149B2455GS	5,3
4	100	40	20	40	10	35	I	149B2456GS	8,7
5	125	40	16	40	0,5	28	I	149B2257GS	14
6	150	40	13	40	0,5	23	I	149B2258GS	21,2
8	200	40	10	40	0,5	17	I	149B2259GS	41,8

Important notice :

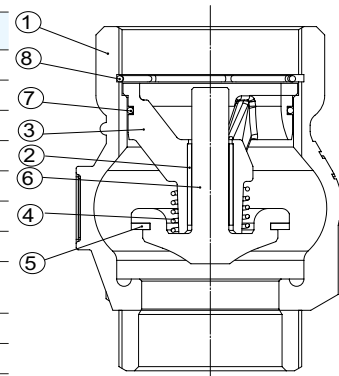
The indicated pressure for the different categories of fluids (L1/L2/G1/G2) is under no condition a guarantee of use. Therefore, it is essential to validate the use of products under given operating conditions. The operating instructions are available on our web site www.socla.com or by requesting from our sales department.

Technical features

Operating temperature	-10 °C to 100 °C
Permissible operating pressure (PFA) in water	See table above
Maximum permissible pressure (PS) other mediums	See table above
Connection	Male/female, G cylindrical gas thread (BSP)
Mediums	Clear liquids, gas

Nomenclature and materials

N°	Description	Materials	EURO	ANSI	
1	Body	Cast iron / Epoxy	EN 1563 EN-GJS-400-15	ASTM A 536 65-45-12	
2	Ring	Except 2"1/2	Bronze	EN 1982 CuSn5Zn5Pb2-C GS	
3	Guide	DN 2"1/2	Bronze	EN 1982 CuSn5Zn5Pb2-C GS	
		Others DN	Cast iron / Epoxy	EN 1561 EN-GJL-250	ASTM A 48 35 B
4	Spring	Stainless steel	EN 10270-3 X10CrNi18-8	AISI 302	
5	O-ring	EPDM			
6	Closing system	DN 2"1/2 - 5"	Bronze	EN 1982 CuSn5Zn5Pb2-C GS	
		DN 6" - 8"	Bronze	EN 1982 CuSn5Zn5Pb2-C GS	
		Stem + Closing system	Bronze	EN 1982 CuSn5Zn5Pb2-C GS	
7	O-ring	EPDM			
8	Rush	DN 2"1/2 à 4"	Stainless steel	EN 10270-3 X10CrNi18-8	AISI 302



Approvals



International construction Standards :
 Directive 2014/68/UE
 Overall dimensions adapted to submersible pumps
 Thread connection NF EN ISO 228-1

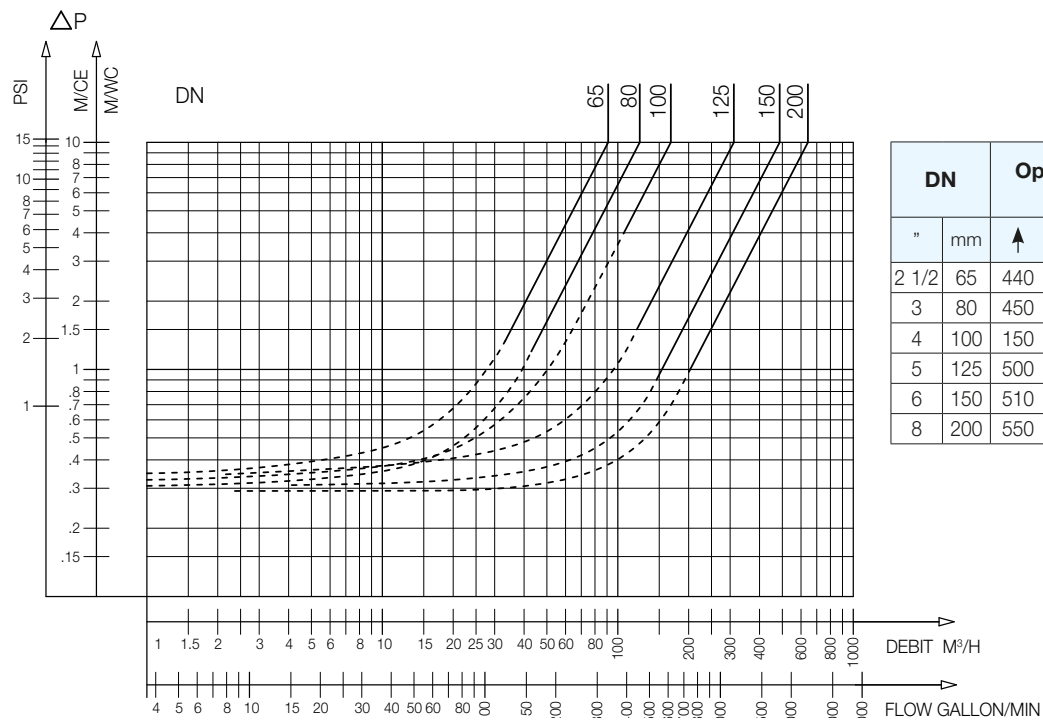
Application

Submersible pumps and high-pressure distribution.

Operation

Direction for use :

- Solid line : Valve completely open
- Dotted line : opening stage of valve

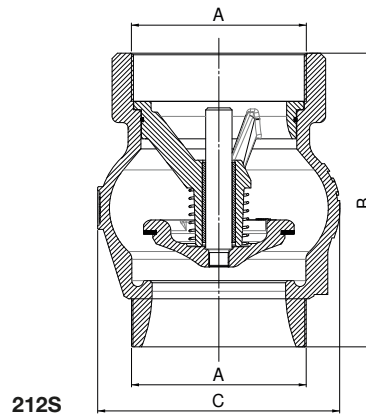


DN	Opening pressure in mm CE				Kv	ζ	
	↑	↓	↔	Without spring			
2 1/2	65	440	220	330	110	91	3,44
3	80	450	190	320	130	124,65	4,21
4	100	150	190	320	130	168	5,66
5	125	500	240	370	130	312	4
6	150	510	210	360	150	487	3,40
8	200	550	210	380	150	642	6,20

212S - Headloss chart

Sizing

A		B	C
"	mm	mm	mm
2 1/2	65	139	97
3	80	165	125
4	100	195	150
5	125	230	188
6	150	275	223
8	200	333	266



The descriptions and photographs contained in this product specification sheet are supplied by way of information only and are not binding.

Socla reserves the right to carry out any technical and design improvements to its products without prior notice. Warranty : All sales and contracts for sale are expressly conditioned on the buyer's assent to Socla terms and conditions found on its website at www.socla.com. Socla hereby objects to any term, different from or additional to Socla terms, contained in any buyer communication in any form, unless agreed to in a writing signed by an officer of Socla.

Socla

A WATTS Brand

Socla sas

365 rue du Lieutenant Putier • 71530 Virey-Le-Grand • France
 Tel. +33 03 85 97 42 00 • Fax +33 03 85 97 42 42
contact@wattswater.com • www.socla.com
 ISO 9001 version 2015 / ISO 18001