

710-711 VALVE WITH UV ELECTRIC ACTUATOR

CHARACTERISTICS

The 710-711+NA ball valve is dedicated to the automatic opening/shut-off of uncharged industrial fluid pipes with a 40 bar maximum pressure. This 3-piece full port ball valve has the ATEX and EC 97/23 certification. It complies with the EN 558 series 1 face-to-face standard. The ISO 5211 pad enables the direct mounting of the NA electric actuator. It is perfectly adapted for an indoor or outdoor service (under shelter).

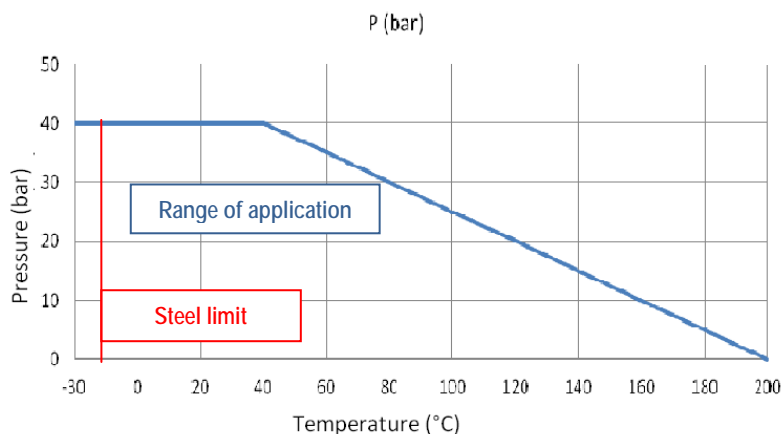


AVAILABLE ITEMS

710: 1.0619 carbon steel (A216 WCB) body
 711: 1.4408 stainless steel (A351 CF8M) body
 DN 50 to DN 100
 Flanged connections RF PN40
 Voltages: 24 V AC, 24 V DC and 230 V AC

LIMITS OF USE

Max. allowable pressure (PS)	40 bar(20 °C)
Min./max. allowable temperature (TS)	Steel: -20 °C / +200 °C Stainless steel : -30 °C / +200 °C
Room temperature	-10 °C / +50 °C
Service	S4 – 30% - 10 starts/h



The following data is for information purpose only and may be subject to alteration without prior notice

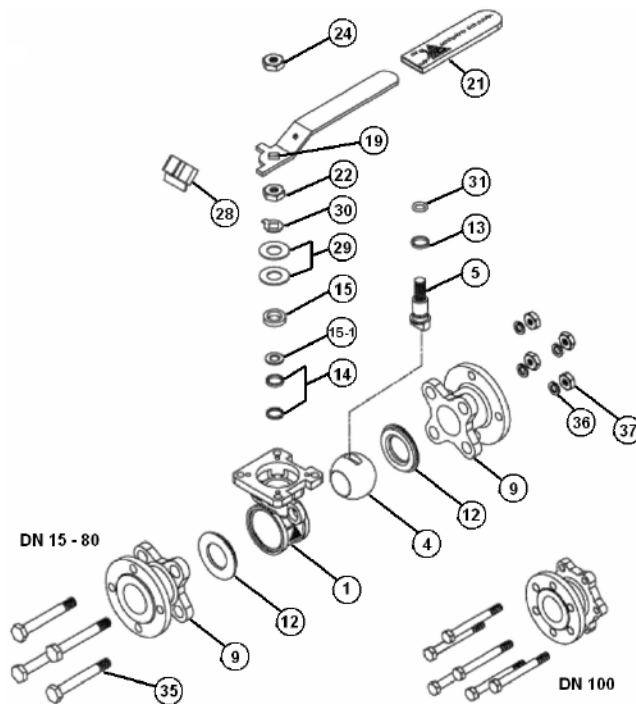
	SECTORIEL S.A. 45, rue du Ruisseau 38290 Saint Quentin-Fallavier – FRANCE Tel.: +33 474 94 90 70 – Fax: +33 474 94 13 95 www.sectoriel.fr / email: sectoriel@sectoriel.fr	Nbr. pages	1/4
		Ref.	710+UV GB
		Rev.	3
		Date	05/2012

710-711 VALVE WITH UV ELECTRIC ACTUATOR

DIRECTIVES AND DEVELOPMENT STANDARDS APPLICABLE


	Standard	Notified bodies		Standard
97/23/EC Pressure Equipment Directive	DN 15 and 20 : excluded		Valve testing	EN 12266
	DN 25 to 100 : category II	#0035	Material certification	EN 10204
Size	EN 12516-1		Alloy grade	EN 1503-1
Flanges dimension	EN 1092-1		Face-to-face dimensions	EN 558 series 1
Actuator attachment	ISO 5211			

CONSTRUCTION



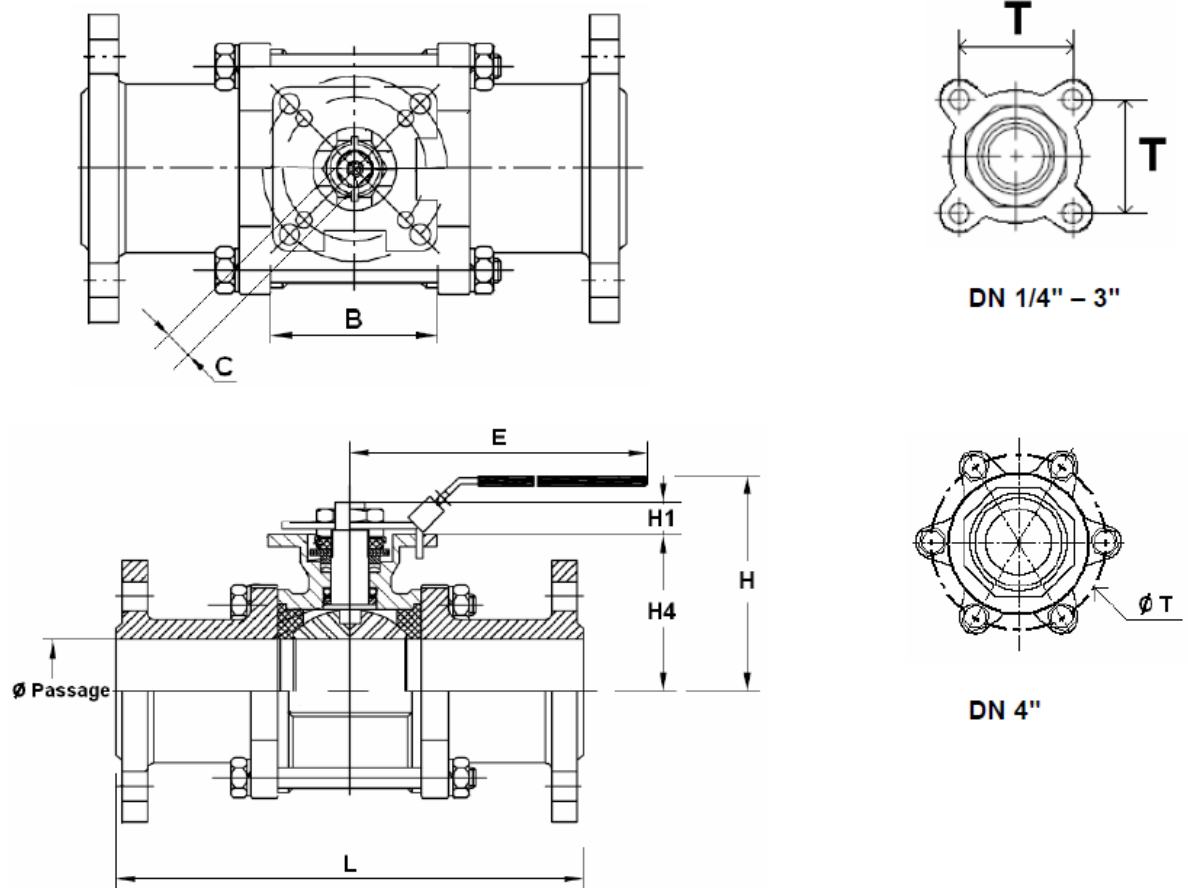
#	Item	710 CS	711 SS	#	Item	710 CS	711 SS
1	Body	Carbon steel A216 WCB	Stainless steel A351 CF8M	22	Gland pack nut	Stainless steel 304	
4	Ball	Stainless steel A351 CF8M		24	Handle nut	Stainless steel 304	
5	Stem	Stainless Steel 316		28	Locking device	Stainless steel 304	
9	Ends	Carbon steel A216 WCB	Stainless steel A351 CF8M	29	Belleville spring washer	Stainless steel 301	
12	Seat	PTFE+50% Stainless steel		30	Locking washer	Stainless steel 304	
13	Ring	PTFE+25% Graphite		31	Stem gasket	FKM	
14	Gland pack	PTFE+25% Graphite		35	Bolts	SS 304	
15	Spacer sleeve	SS 304		36	Washers	SS 304	
19	Handle	SS 304		37	Nuts	SS + PTFE + Graphite	
21	Sleeve	PVC					

The following data is for information purpose only and may be subject to alteration without prior notice

	SECTORIEL S.A. 45, rue du Ruisseau 38290 Saint Quentin-Fallavier – FRANCE Tel.: +33 474 94 90 70 – Fax: +33 474 94 13 95 www.sectoriel.fr / email: sectoriel@sectoriel.fr	Nbr. pages	2/4
		Ref.	710+UV GB
		Rev.	3
		Date	05/2012


710-711 VALVE WITH UV ELECTRIC ACTUATOR

DIMENSIONS (mm)



DN	15	20	25	32	40	50	65	80	100
Φ	15	20	25	32	40	50	65	80	100
L	130	150	160	180	200	230	290	310	350
B	22.5	27.5	34	42.5	52	63.5	85.5	102	129
E	112	112	136	185	197.9	197.9	264	264	325
H	73	80.8	90.5	98.7	115.3	124	155	208.5	216.7
H1	8.5	8.5	11.4	11.4	14	13.7	18	18	23
H4	37	45	53.5	59	74.8	83.5	108.8	118.3	153.8
C	9	9	9	9	14	14	17	17	17
T	31	35	41	49	59	71	91	107	195
Weight (kg)	2.04	2.9	3.7	5.4	6.7	9.7	15.4	21.3	36.7

The following data is for information purpose only and may be subject to alteration without prior notice

	SECTORIEL S.A.	Nbr. pages	3/4
	45, rue du Ruisseau	Ref.	710+UV GB
	38290 Saint Quentin-Fallavier – FRANCE	Rev.	3
	Tel.: +33 474 94 90 70 – Fax: +33 474 94 13 95	Date	05/2012
	www.sectoriel.fr / email: sectoriel@sectoriel.fr		

710-711 VALVE WITH UV ELECTRIC ACTUATOR

ACTUATION WITH UV

Suggested standard UV actuation under the following conditions:

- Electric actuator with an IP 65 plastic enclosure and steel gears
- A minimum 1.3 safety factor compared with the valve nominal torque rating,
- A maximum pressure differential up/downstream of 10 bar ($=\Delta P$)

The electric actuator mounting is direct

DN	Actuator	Power	Operating time* 230 V AC	Operating time* 24 V AC/DC	Standard equipment of the actuator
50	UVC15	25 W	8 s	8 s	2 adjustable limit switches + 2 dry auxiliary switches Actuator thermal cut-out Manual override by handwheel Visual position indicator Electrical connection: 2 gland packs. ½" PF
65	UVC15	25 W	8 s	8 s	
80	UVC15	25 W	8 s	8 s	
100	UVC15	25 W	8 s	8 s	
					Optional equipment Anti-condensation heater

*Unloaded operating time given for information purpose only. May vary depending on the medium


For any other working conditions, please contact us.

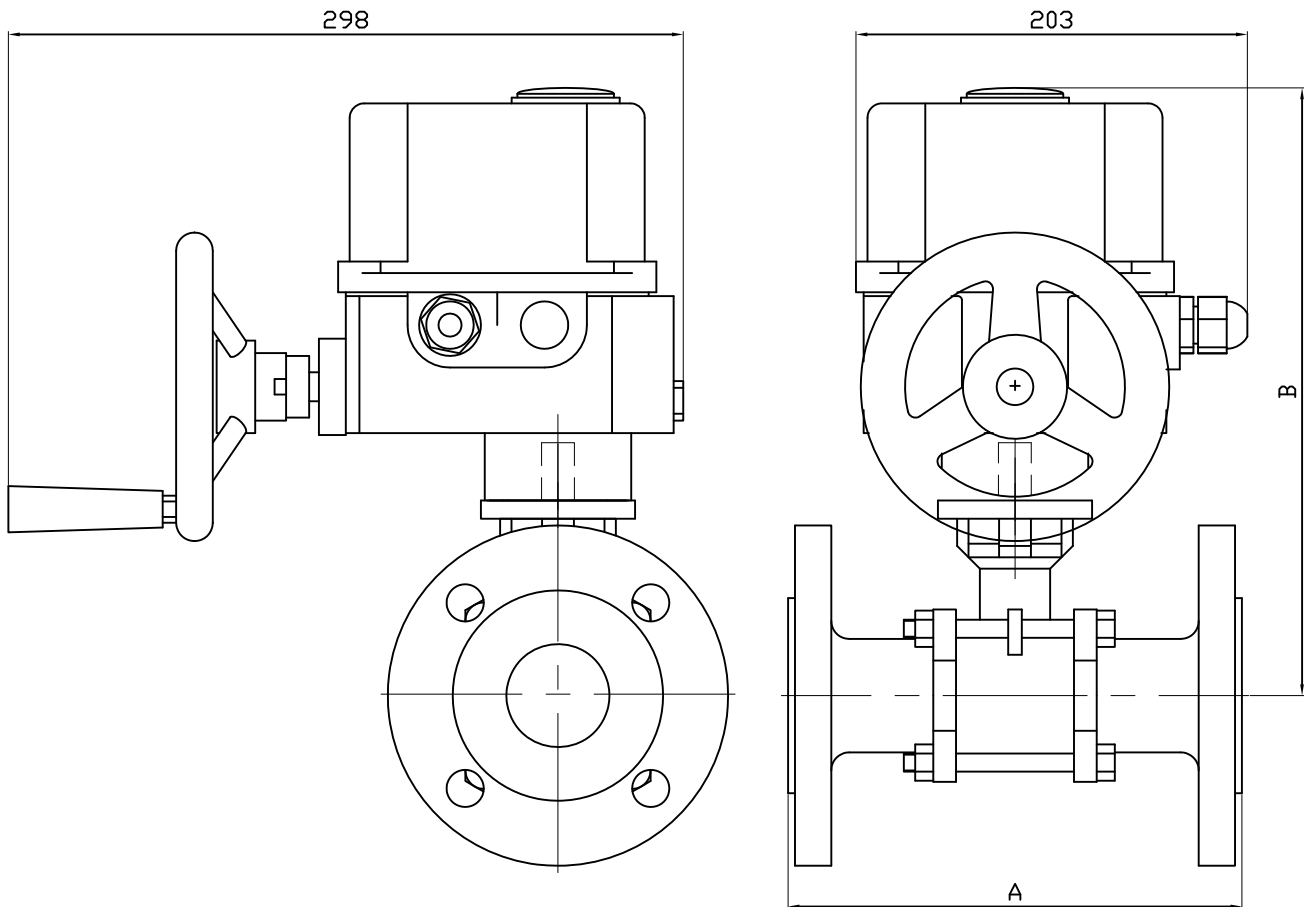
ACTUATION OPTIONS

There are many different options, please contact our commercial department.

1	Electric actuator sized for a maximum pressure differential up/downstream over 10 bar ($=\Delta P$)
2	Anti condensation heater


The following data is for information purpose only and may be subject to alteration without prior notice

	SECTORIEL S.A. 45, rue du Ruisseau 38290 Saint Quentin-Fallavier – FRANCE Tel.: +33 474 94 90 70 – Fax: +33 474 94 13 95 www.sectoriel.fr / email: sectoriel@sectoriel.fr	Nbr. pages	4/4
		Ref.	710+UV GB
		Rev.	3
		Date	05/2012



DN	50	63	80	100
A	230	290	310	350
B	248.5	274	283	319
KG	15.8	21.4	27.3	42.7

Informations données à titre indicatif et sous réserve de modifications éventuelles
data subject to alteration

Ech: /	Date :17/07/2012	Dessiné par : ED	Tolérances générales : +/- 0.2	Modifications	Date	REV.
ROBINET A TOURNANT SPHERIQUE 710-711MD/BALL VALVE 710-711MD + SERVOMOTEUR UV/ELECTRIC ACTUATOR UV				Matière :		
				Poids (Kg) :		
				Traitement : SANS		
				45, Rue du Ruisseau		Plan n° Ens 1137
				38297 SAINT QUENTIN FALLAVIER		

ELECTRIC ACTUATOR UV

GENERAL CHARACTERISTICS

The UV electric actuators are generally used on ¼ turn valves. The maximum output torque is between 150 Nm and 600 Nm. Its compact construction with an aluminium alloy enclosure and a plastic cover makes it convenient for the actuation of ball valves and butterfly valves. The UV electric actuators are equipped with a manual override activated by handwheel. Protection IP 65: possible use indoor and outdoor under shelter.

AVAILABLE ITEMS

Torque: 150 Nm, 250 Nm, 490 Nm and 600 Nm

Voltage: 230 V AC, 24 V AC and 24 V DC

IP 65



LIMITS OF USE

Protection rating	IP 65
Temperature range	-10 °C / +60 °C
Service	S4 - 30% - 10 starts/h

MECHANICAL CHARACTERISTICS

Gears	Treated steel pinions
Rotation angle	90° +/- 5°
Decutching	N/A
Manual override	Handwheel



Electric actuator	UVC15		UVD25			UVF50	UVG60
Voltage	230 V AC	24 V AC	230 V AC	24 V AC	24 V DC	230 V AC	230 V AC
Torque	150 Nm		250 Nm			490 Nm	600 Nm
Operating time	8 s		20 s			30 s	30 s
ISO 5211 pad	F07		F07/F10			F10/F12	F10/F12
Star drive nut	17		22			27	27

ELECTRICAL CHARACTERISTICS

Motor protection	Thermal cut-out	Anti-condensation	Optional, 2 W heater
Limit switch	2 adjustable switches	Electrical connection	2 gland packs. ½" PF
Auxiliary switch	2 adjustable dry switches, cutting capacity: 3 A @ 230 V AC / 0.3 A @ 250 V DC		

Electric actuator	UVC15		UVD25			UVF50	UVG60
Voltage	230 V AC	24 V AC	230 V AC	24 V AC	24 V DC	230 V AC	230 V AC
Power	25 W	30 W	25 W	30 W	30 W	40 W	60 W
Intensity	0.42 A	0.5 A	0.42 A	0.5 A	0.5 A	0.58 A	0.66 A

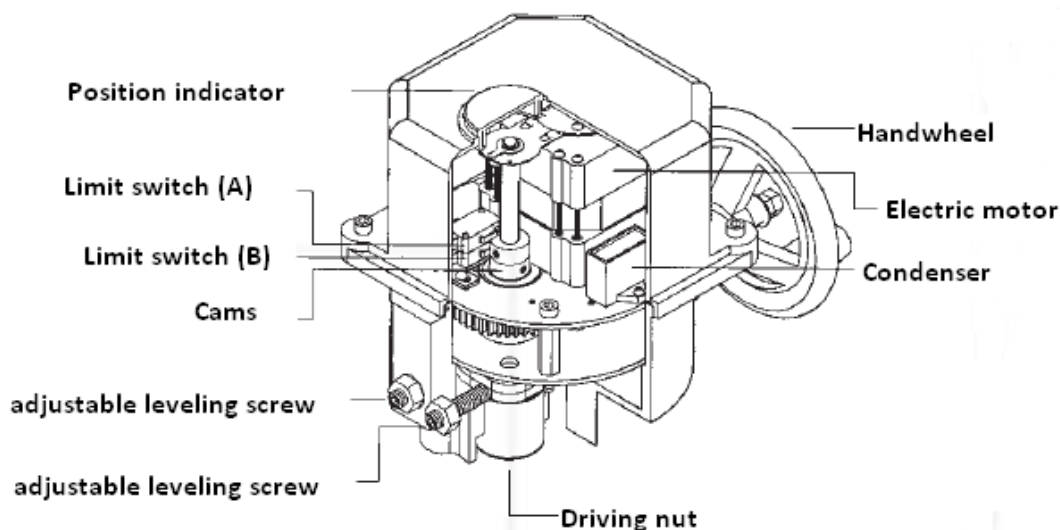
The following data is for information purpose only and may be subject to alteration without prior notice

	SECTORIEL S.A. 45, rue du Ruisseau 38290 Saint Quentin-Fallavier – FRANCE Tel.: +33 474 94 90 70 – Fax: +33 474 94 13 95 www.sectoriel.fr / email: sectoriel@sectoriel.fr	Pages	1/3
		Ref.	FT2233 GB
		Rev.	5
		Date	03/2012

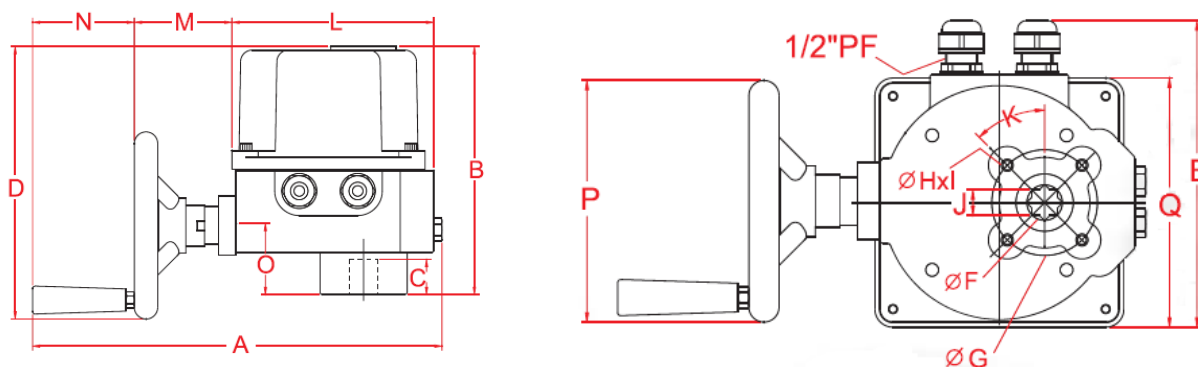
ELECTRIC ACTUATOR UV

CONSTRUCTION

Enclosure	Aluminium alloy	Cams	Treated steel
Cover	PA66 plastic	Drive nut	Steel
Worm gear	Treated steel	Position indicator	Plexiglas®
Handwheel	Steel		




DIMENSIONS (mm)



Dimension	A	B	C	D	E	G	J	L	M	N	O	P	Q
UVC15	350	215	30	236	203	70	17	173	84	87	59	160	165
UVD25	350	240*	30	235	203	102	22	173	84	87	85	160	165
UVF50	350	272	34	260	203	125	27	173	84	87	92	200	165
UVG60	350	272	34	260	203	125	27	173	84	87	92	200	165

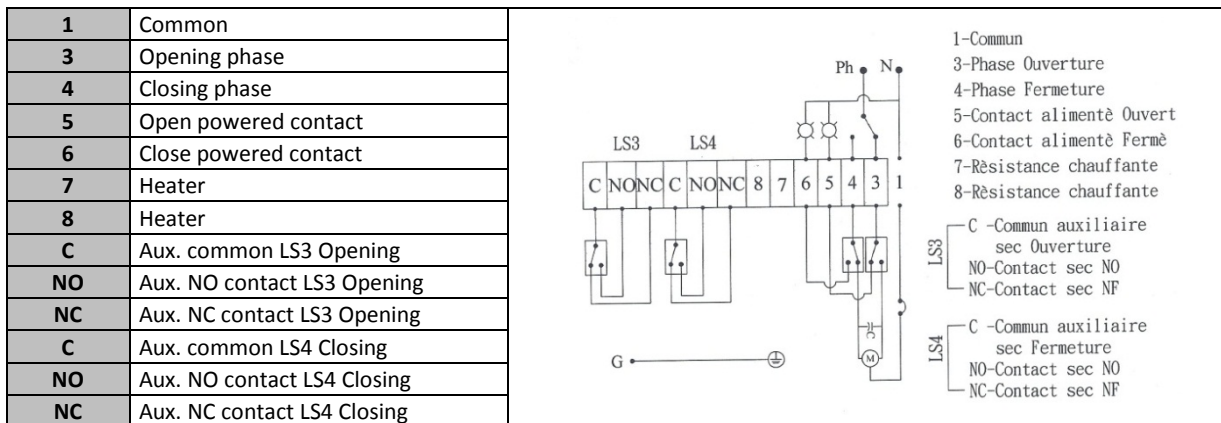
* This dimension is 266 mm for the 24 V AC/DC version.

The following data is for information purpose only and may be subject to alteration without prior notice

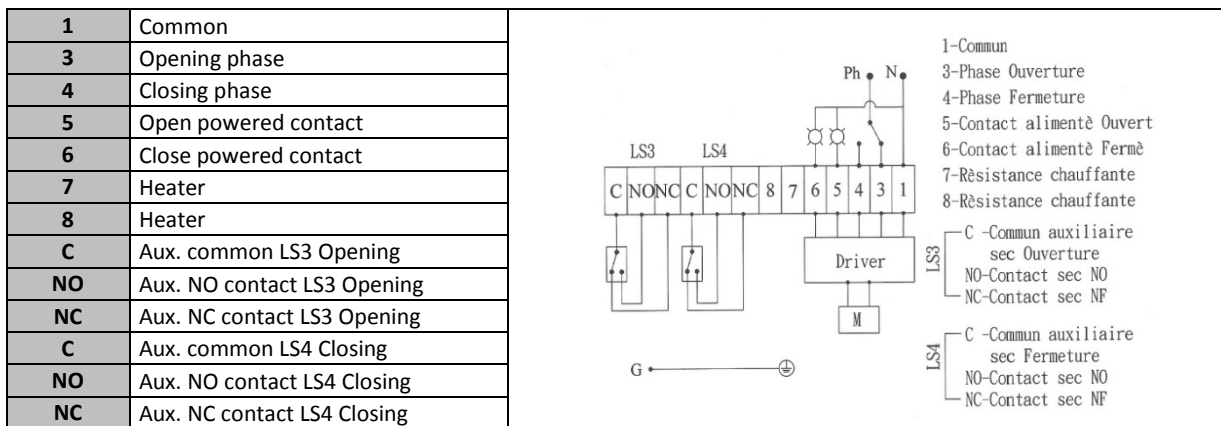
	SECTORIEL S.A. 45, rue du Ruisseau 38290 Saint Quentin-Fallavier – FRANCE Tel.: +33 474 94 90 70 – Fax: +33 474 94 13 95 www.sectorel.fr / email: sectorel@sectorel.fr	Pages	2/3
		Ref.	FT2233 GB
		Rev.	5
		Date	03/2012

ELECTRIC ACTUATOR UV

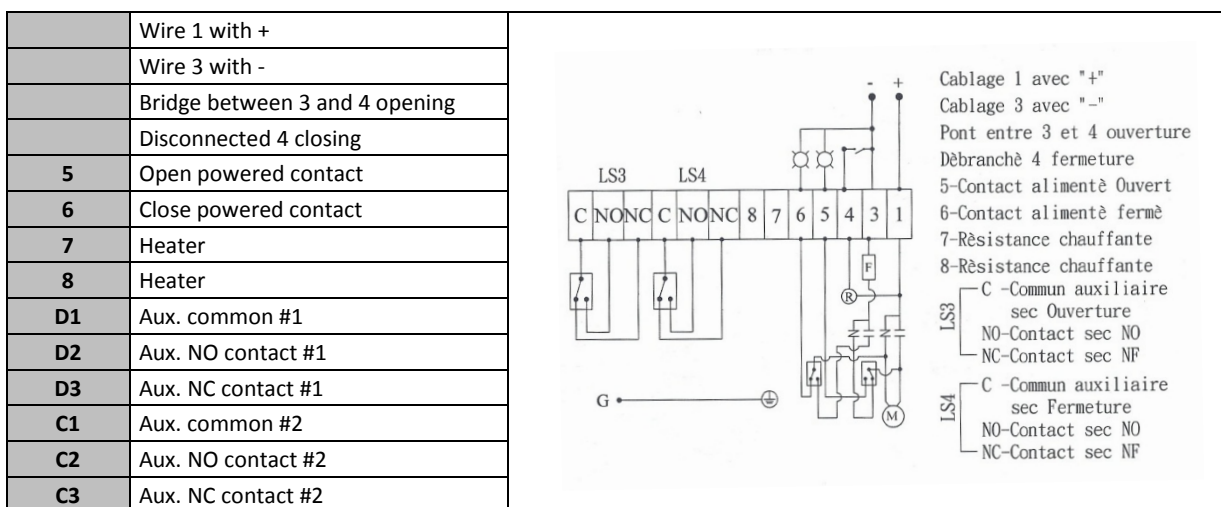
WIRING SCHEME 230 V AC




WIRING SCHEME 24 V AC



WIRING SCHEME 24 V DC



The following data is for information purpose only and may be subject to alteration without prior notice

	SECTORIEL S.A. 45, rue du Ruisseau 38290 Saint Quentin-Fallavier – FRANCE Tel.: +33 474 94 90 70 – Fax: +33 474 94 13 95 www.sectoriel.fr / email: sectoriel@sectoriel.fr	Pages	3/3
		Ref.	FT2233 GB
		Rev.	5
		Date	03/2012