

# BUTTERFLY VALVE METAL/METAL TIGHTNESS

Ref. : DS 1111

Rev. : 2

Date : 08/06



Valves and fittings

90 rue du ruisseau 38297 ST QUENTIN FALLAVIER

Tel : (33)04.74.94.15.90 Fax : (33)04.74.95.62.08

E.mail : sferaco@sferaco.fr

## SPECIFICATIONS :

- . Long neck for isolation
- . ISO mounting pad
- . Wafer type
- . Between flange GN10-GN16-ASA150 up to DN400 - Over on request
- . Crossing stem
- . Locking device lever with 10 positions
- . No tightness - loose factor : 2% of Kvs



## USE :

- . For common fluids
- . Max température Ts : see materials
- . Max pressure Ps : 16 bars

## RANGE :

- . With lever DN32 to DN300
- . Naked stem or gear box DN350 to DN1500

## MATERIALS :

DESIGNATION	1111	1112
Body	GSC 25	SS 316
Stem	SS 420	SS 304
Butterfly	Cast iron GS*	SS 316
Température Ts	350°C	550°C

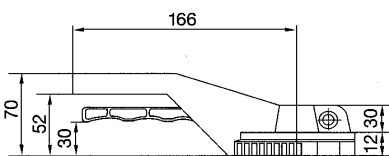
\* Chromed

Other model on request

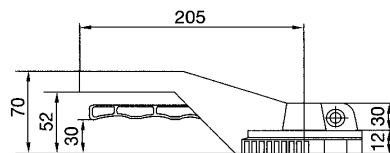
## STANDARDS :

- . DIRECTIVE 97/23/CE : CE N° 0409
- . Risk category III module B + C1
- . Lenght according to ISO 5752 NF 29305

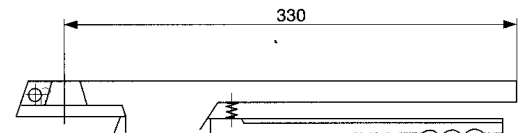
## LEVERS :



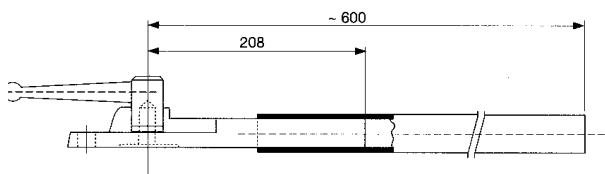
DN 40 à DN 65



DN 80 à DN 100



DN 125 à DN 200



DN 250 à DN 300

**ADVICE :** Our opinion and our advice are not guaranteed and SFERACO shall not be liable for the consequences of damages. The customer must check the right choice of the products with the real service conditions.

# BUTTERFLY VALVE METAL/METAL TIGHTNESS

Ref. : DS 1111

Rev. : 2

Date : 08/06



Valves and fittings

90 rue du ruisseau 38297 ST QUENTIN FALLAVIER

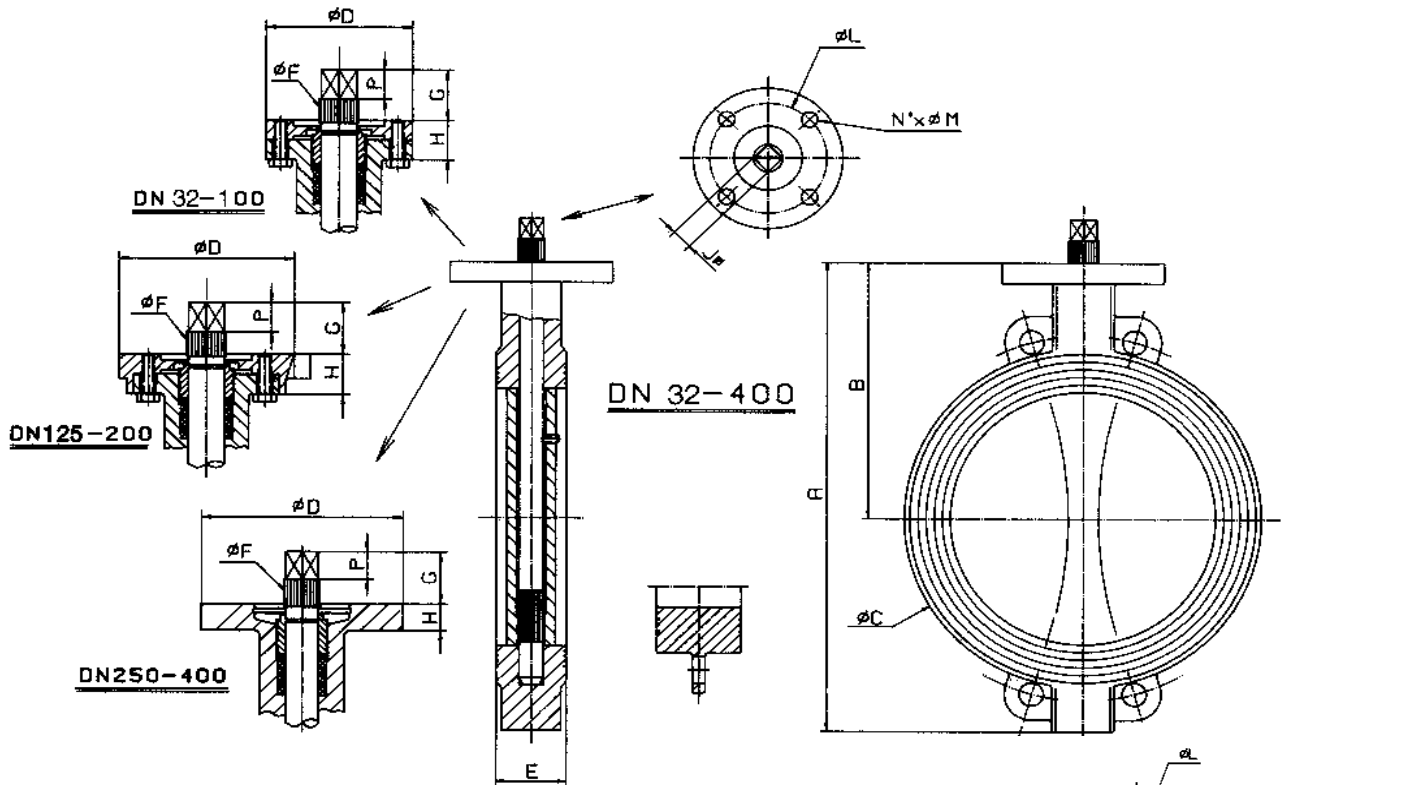
Tel : (33)04.74.94.15.90 Fax : (33)04.74.95.62.08

E.mail : sferaco@sferaco.fr

SIZE :

VALVES :

	DN	32/40	50	65	80	100	125	150	200	250	300	350	400
A		206	228	243	266	294	324	349	438	461	523	582	645
B		140	156	162	170	185	207	216	256	248	280	300	340
C		82	102	119	135	155	185	208	270	328	381	437	486
D		88	88	88	88	88	105	105	105	150	150	170	170
E		33	43	46	46	52	56	56	60	68	78	78	102
F		10,5	10,5	14,5	16,5	16,5	18,5	18,5	22,5	25,5	30,5	30,5	35,5
G		30	30	30	30	30	30	30	30	40	40	40	40
H		24	24	24	24	24	24	24	24	20	20	20	20
J		8	8	9	11	11	14	14	17	19	22	22	27
L		70	70	70	70	70	70	70	70	102	102	140	140
N° x M		4 x 9	4 x 9	4 x 9	4 x 9	4 x 9	4 x 9	4 x 9	4 x 9	4x11	4x11	4x18	4x18
Weight		2	3,5	4,5	5	6,5	8	9	15	21,5	30	39	52



	DN	450	500	600	700	750	800	900	1000
A		738	822	965	1100	1150	1248	1325	1457
B		394	440	507	575	600	655	685	754
C		538	595	695	804	860	911	1010	1124
D		175	175	250	300	300	300	300	300
E		114	127	154	165	190	190	203	216
F		50	50	60	60	65	65	80	80
G		80	80	90	90	90	110	110	110
H		22	25	30	30	30	30	30	30
L		140	140	165	254	254	254	254	254
N° x M		4x18	4x18	4x22	8x18	8x18	8x18	8x18	8x18
Weight		87	117	177	258	296	330	505	661

