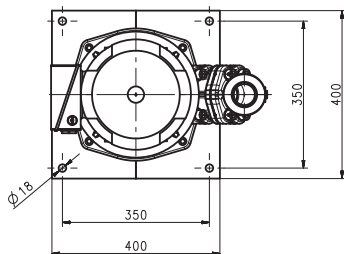
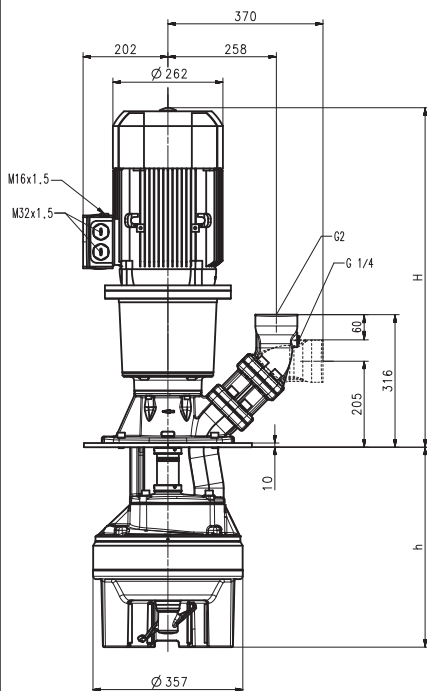


# Cutter Pumps

## SXC2824

Axial/semi-open impellers

### SXC2824



Type	Vol. del. at manom. del. head l/min /m	Height H mm	Depth of immersion h mm	Weight kg	Power (4-pole) kW	Voltage 3~ V	Fre- quen- cy Hz	Current A	Speed 1/min
<b>SXC2824/480</b>	<b>750/13</b>	<b>809</b>	<b>476</b>	<b>194</b>	<b>7.5</b>	<b>400</b>	<b>50</b>	<b>14.3</b>	<b>1465</b>
	<b>610</b>		<b>606</b>	<b>196</b>					
	<b>730</b>		<b>726</b>	<b>199</b>	<b>8.6</b>	<b>460</b>	<b>60</b>	<b>14.2</b>	<b>1765</b>



### Cutter Pumps

The cutter pumps of the **series SXC** are designed to handle low alloyed steels, machining steel and cast iron / aluminum combinations. Chips can also be in the shape of birds nests or chip bundles. The chips must be supplied to the suction inlet of the pump. The chips are being picked up by the agitator then broken up, if necessary, and then cut and delivered by the pump.

The SXC pumps are equipped with the user-friendly 45 degree **flange** connection which allows for either vertical or horizontal pipe connection and the connection of a pressure gauge with G 1/4.

For more information see lifting pumps features SXC/SPC within the technical information section.

### Applications

- Types of fluid
  - coolants
  - cooling/cutting oils on request
- Max. chip to coolant ratio by weight: 0.5 %
- Chip material:
  - Low alloyed steel, machining steel,
  - cast iron/aluminum combinations
- Kinematic viscosity
  - ...45 mm<sup>2</sup>/s (45 cSt)
- Pumping temperature
  - 0...80° C

### Construction

Pump body	cast iron
Cover	cast iron
Impeller radial	cast steel
Cutting unit	coated (> 60 HRC)
Shaft	steel

