

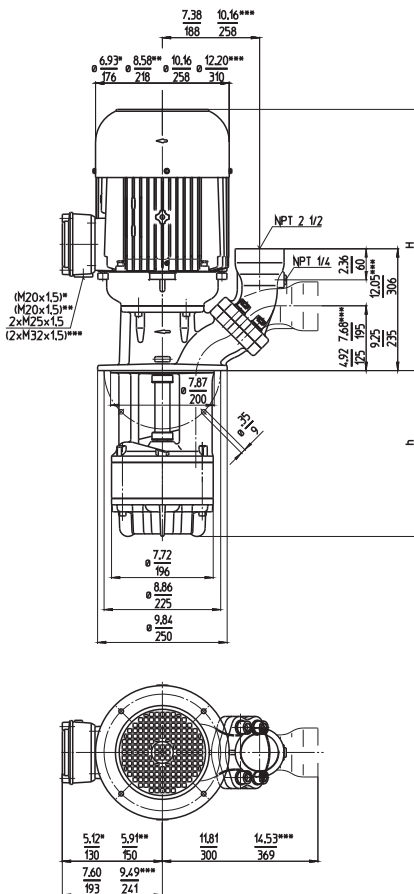
Quick Suctioning Immersion Pumps

SGL801...804

Axial/semi-open impellers



SGL801, 802 SGL803, 804



Discharge port with NPT 2 inches available upon request.

Dimensions in Inches / mm

- *) Dimensions SGL801
- **) Dimensions SGL802
- ***) Dimensions SGL804

Type	Flow at head		Height	Depth of im- mersion		Weight		Power HP kW	Voltage 3~ V	Fre- quen- cy Hz	Current Speed	
	GPM /Feet l/min /m	H inch	h inch	h mm	Lbs	kg	AMPS				RPM	
SGL801S220	150/40	18.3	8.66	220	112.5	51	3.9	230	60	10.2	3480	
	600/10	464					2.94	460	60	5.1	3480	
	320		12.60	320	119.1	54						
	450		17.72	450	127.9	58						
	570		22.44	570	136.7	62						
	770		30.31	770	163	74						
1000		39.37	1000	179	81							
SGL802S290	150/75	21.0	11.42	290	168	76	8.4	230	60	20.8	3510	
	600/22	533					6.3	460	60	10.4	3510	
	390		15.35	390	176	80						
	520		20.47	520	183	83						
	640		25.20	640	190	86						
	840		33.07	840	218	99						
1070		42.13	1070	232	105							
SGL803S360	150/105	24.1	14.17	360	267	121	13.8	230	60	31.6	3550	
	600/30	612					10.3	460	60	15.8	3550	
	460		18.11	460	273	124						
	590		23.23	590	280	127						
	710		27.95	710	289	131						
	910		35.83	910	318	144						
SGL804S430	150/140	24.4	16.93	430	333	151	20.1	230	60	48.2	3560	
	600/40	620					15.0	460	60	24.1	3560	
	530		20.87	530	340	154						
	660		25.98	660	351	159						
	780		30.71	780	357	162						
	980		38.58	980	390	177						

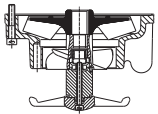


Quick Suctioning Immersion Pumps

of **series SGL** are equipped with the patented "BRINKMANN's Suction De-aeration System" and are excellently suited for pumping **extremely air entrained fluids** (grinding oils) as they occur in high-speed grinding.

The quick suctioning immersion pumps reach stable working conditions as soon as the liquid level reaches the suction inlet.

The SGL pumps are equipped with the user-friendly 45 degree **flange** connection which allows for either vertical or horizontal pipe connection and the connection of a pressure gauge.



The pump SGL801 is available (upon request) with an additional agitator at the pump suction for breaking up and separating large bundles of chips or birds nests.



Applications

- Types of fluid
 - coolants
 - cooling/cutting oils
 - grinding oils
- Kinematic viscosity
 - ...200 SSU (...45 mm²/s)
- Pumping temperature
 - 30...175 °F (0...80 °C)

Construction

Pump body	cast iron
Cover	cast iron
Impeller axial	cast steel
Impeller radial	cast steel
Shaft	steel

