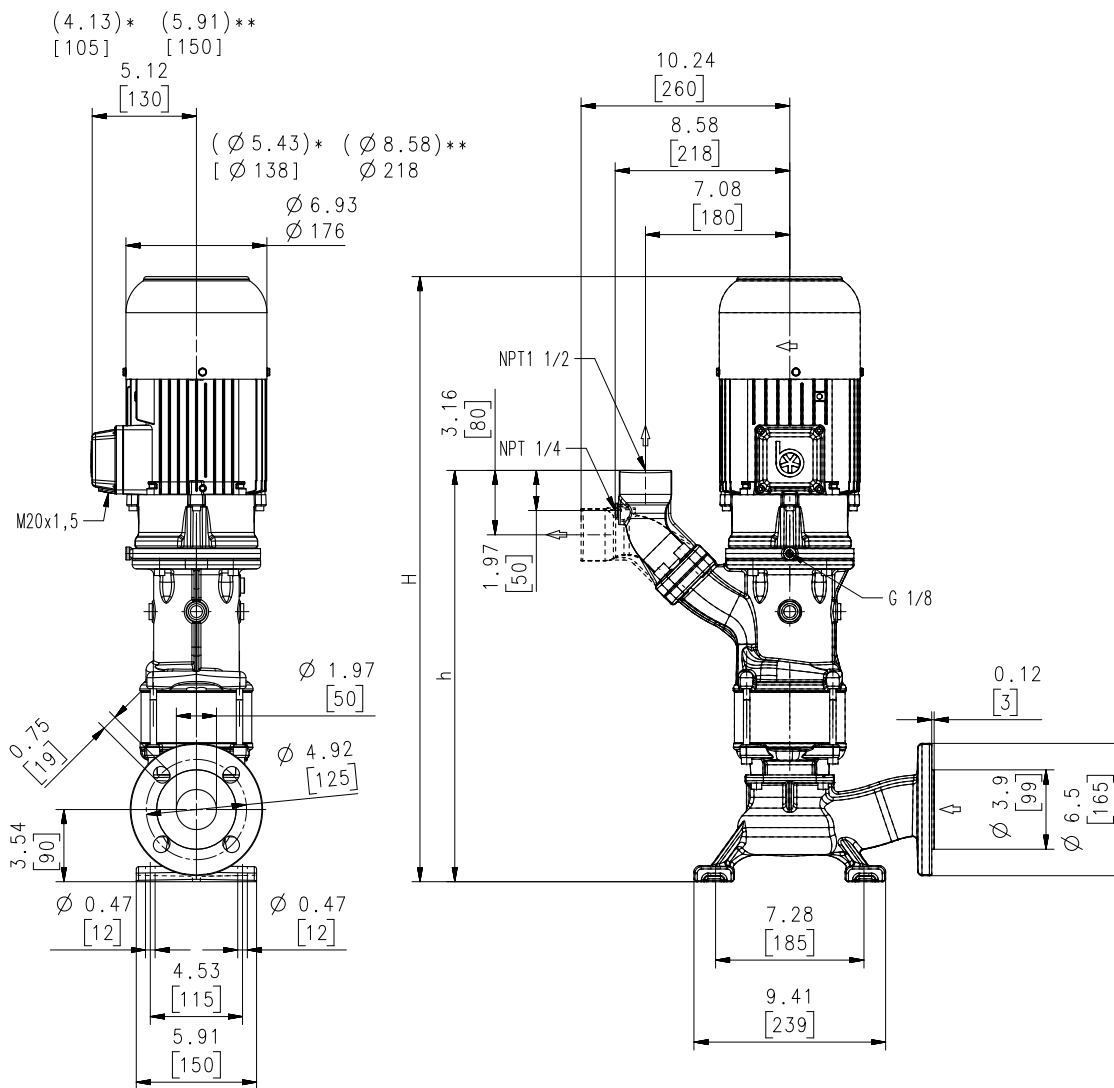


Vertical End Suction Pumps

SBG501S...SBG503S-V

Axial/semi-open impellers

SBG501S...503S-V



Dimensions in Inches / mm ; *) Dimensions SBG501S-V
**) Dimensions SBG503S-V

Type	Flow at head	Dimensions				Weight		Power	Voltage	Fre-	Current	Speed
	GPM /Feet l/min /m	H inch	H mm	h inch	h mm	Lbs	kg	HP kW	3~ V	quen- cy Hz	AMPS	RPM
SBG501S-V	60/22	24.2	614	17.7	449	75.0	34	1.7	230	60	4.8	3440
	240/6.5							1.27	460	60	2.4	3440
SBG502S-V	60/48	29.8	756	20.2	513	108.0	49	3.4	230	60	8.8	3480
	240/14.5							2.55	460	60	4.4	3480
SBG503S-V	60/78	33.8	859	22.7	577	141.1	64	5.1	230	60	12.8	3520
	240/22.5							3.8	460	60	6.4	3520



Vertical End Suction Pumps

are centrifugal inline pumps with a compact design where the impeller is mounted onto the extended motor shaft. These pumps are not self-priming and must be gravity fed. All pumps are equipped with double mechanical seal. This pump series is designed for vertical installations next to a tank and for pumping **highly air entrained coolant and cutting oils**, as they occur in **high speed grinding applications**.

The SBG pumps are equipped with the user-friendly 45 degree **flange** connection which allows for either vertical or horizontal pipe connection and the connection of a pressure gauge with NPT 1/4. For more information see mechanical features within the technical information section.

Applications

- Types of fluid
 - coolants
 - cooling/cutting oils
 - grinding oils
- Kinematic viscosity
 - ...200 SSU (...45 mm²/s)
- Pumping temperature
 - 30...175 °F (0...80 °C)

Construction

Pump body	cast iron
Cover	cast iron
Impeller axial	cast steel
Impeller radial	cast steel
Shaft	steel
Mechanical seal	SiC
Noise level (Motor only; Tolerance +3 dBA)	
SBG501S-V	70 dBA
SBG502S-V	73 dBA
SBG503S-V	75 dBA

