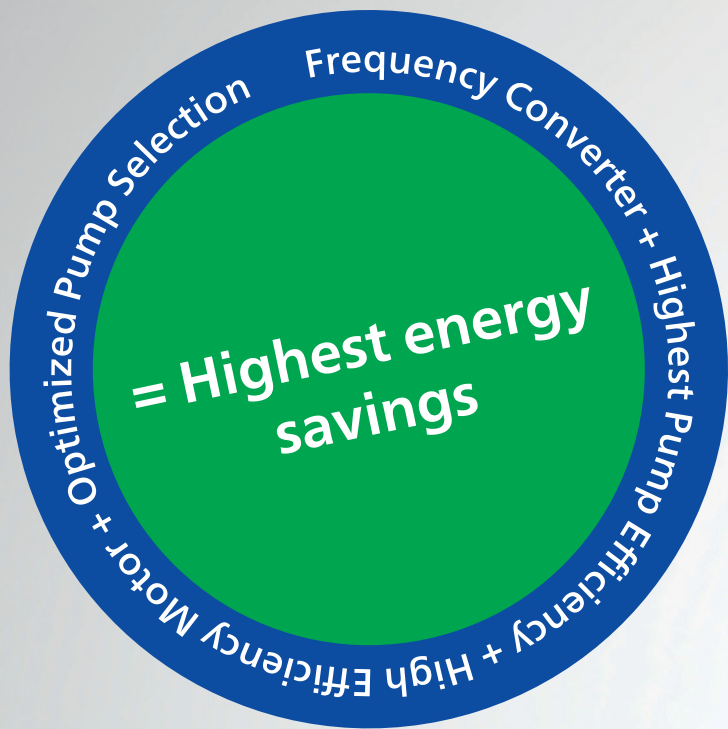


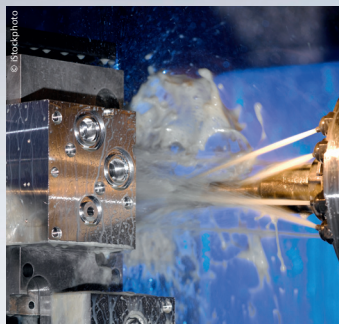
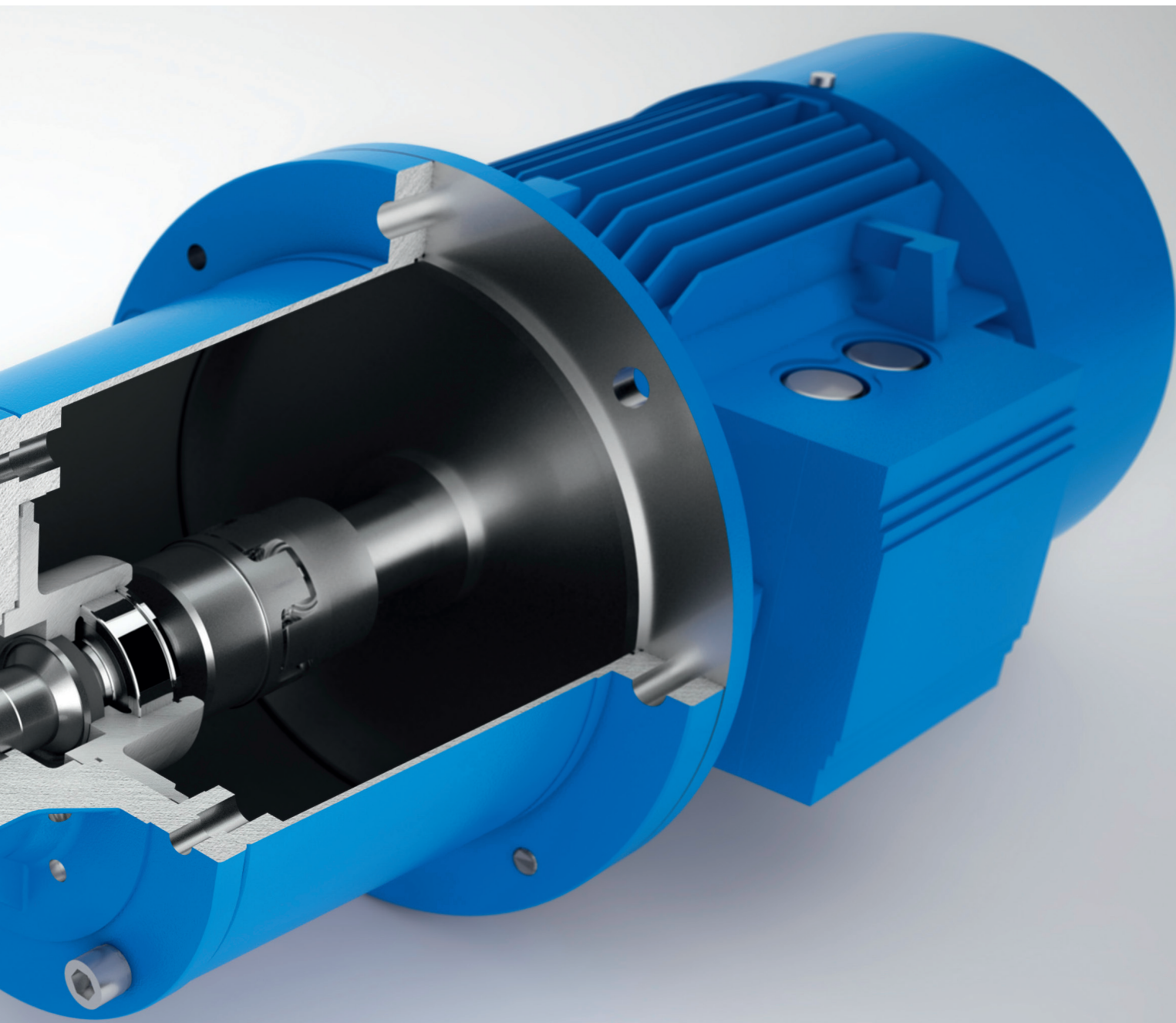
PRODUCT OVERVIEW

## COOLANT PUMPS



「Coolant Pumps  
for various applications」





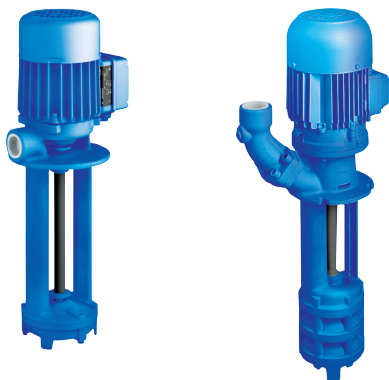
# Machine tool coolant supply Lifting Pumps

Semi-open impellers are a central feature for this range of pumps. The pumps are resistant to dirt and are suitable for various applications. In the patented version with suction de-aeration system, they are the right solution, particularly for inflated emulsions and grinding oils. Horizontal end-suction pumps are a compact, space-saving alternative.

Coolant pumps, that's us!



## TB | TA | STE | STA



<b>Impellers</b>	semi-open
<b>Fluids</b>	coolants, emulsions, oils
<b>Volumetric delivery</b>	up to 5000 l/min
<b>Delivery head</b>	up to 120 m

### Immersion Pumps

- Centrifugal pumps for the coolant supply
- Mounting on top of the tank
- With SAE/45 degree flange for easy assembly
- Low-wear anti-friction bearing
- Seal-less
- Multi-stage version (steep performance curves)
- Immersion depth up to 1.5 m possible

## (S)TL | SAL | TGL | SGL



<b>Impellers</b>	axial / semi-open
<b>Fluids</b>	coolants, emulsions, oils
<b>Volumetric delivery</b>	up to 2600 l/min
<b>Delivery head</b>	up to 115 m

### Quick Suctioning Immersion Pumps

- Patented BRINKMANN's Suction De-aeration System
- Excellently suited to pump extremely inflated fluids (emulsions resp. cooling/cutting oils)
- Mounting on top of the tank
- With SAE/45 degree flange for easy assembly
- Low-wear anti-friction bearing
- Seal-less
- Multi-stage version (steep performance curves)
- Ideally suited for grinding applications
- Available with additional agitator at the pump suction for breaking up clusters of grinding sludge

## SBA | SBA-V | SBG | SBG-V



<b>Impellers</b>	axial / semi-open
<b>Fluids</b>	coolants, emulsions, oils
<b>Volumetric delivery</b>	up to 2250 l/min
<b>Delivery head</b>	up to 62 m

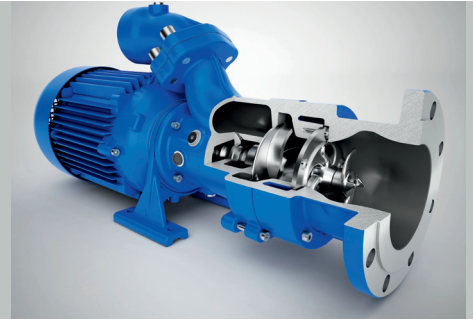
### Horizontal End-Suction Pumps

- Foot mounted version
- Vertical (space saving) design available
- With SAE/45 degree flange for easy assembly
- Multi-stage version (steep performance curves)
- Different foot location available
- For oil and water based coolant applications
- Non-self-priming
- Available in a version resistant to dry running (-GD)

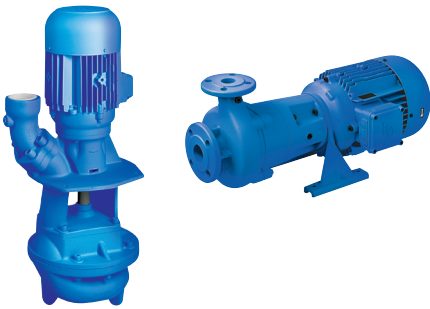
# 「Chip handling Lifting Pumps」

Chip handling with lifting pumps from Brinkmann Pumps – as versatile and flexible as your requirement. Whether you need lifting pumps, wear-optimized pumps for pump back systems to the central filtration system or cutter pumps to replace the chip breaker. Pumps are available for vertical or horizontal installation.

Coolant pumps, that's us!



## SFT | BFT



<b>Impellers</b>	semi-open
<b>Fluids</b>	coolants, emulsions, oils
<b>Volumetric delivery</b>	up to 2500 l/min
<b>Delivery head</b>	up to 20 m

### Vortex Pumps

- With low-wear SIC-bearing, cartridge shaft bushing or without SIC shaft bushings
- Volute integrated in pump body allows for very compact design
- Up to 1.6 m immersion depth
- Sphere size passage 50 mm
- 45 degree flange for easy assembly
- Chip to coolant ratio of up to 1.5 % by weight

### Vortex Horizontal End-Suction Pumps

- Sphere size passage 35 mm
- Chip to coolant ratio of up to 1.5 % by weight
- Available in a version resistant to dry running (-GD)
- Available with cartridge shaft bushing

## SFL | SBF



<b>Impellers</b>	axial / semi-open
<b>Fluids</b>	coolants, emulsions, oils
<b>Volumetric delivery</b>	up to 2500 l/min
<b>Delivery head</b>	up to 62 m

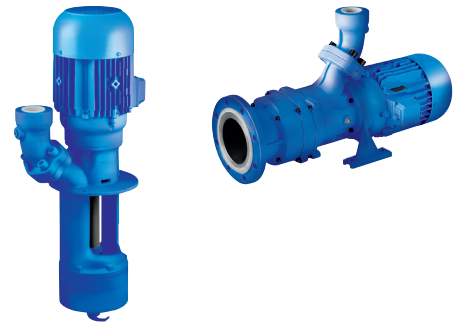
### Quick Suctioning Immersion Pumps

- Pump back for various chip materials
- With low-wear SIC-bearing, optionally with cartridge shaft bushing
- Wear resistant wetted parts
- 45 degree flange for easy assembly
- Chip to coolant ratio of up to 1 % by weight
- Suitable for pumping inflated coolant fluids
- The perfect pump for back pump systems
- Available with additional agitator at the pump suction for breaking up bundles of chips

### Horizontal End-Suction Pumps

- Pump back for various chip materials
- Wear resistant wetted parts
- 45 degree flange for easy assembly
- Chip to coolant ratio of up to 1 % by weight
- Available in a version resistant to dry running (-GD)

## SFC | SPC | SXC | SBC



<b>Impellers</b>	axial / semi-open
<b>Fluids</b>	coolants, emulsions, oils
<b>Volumetric delivery</b>	up to 1800 l/min
<b>Delivery head</b>	up to 45 m

### Cutter Pumps, vertical

- Cutting and pumping of aluminum, plastic or brass chips
- Special version available on request for the cutting and pumping of steel chips
- Robust cartridge shaft bushing
- 45 degree flange for easy assembly
- Chip to coolant ratio of up to 1.5 % by weight

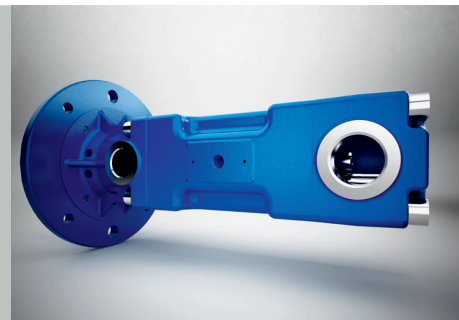
### Cutter Pumps, horizontal

- Space saving assembly
- Cutting and pumping of aluminum, plastic or brass chips
- Robust cartridge shaft bushing
- 45 degree flange for easy assembly
- Chip to coolant ratio of up to 1.5 % by weight
- Dry-running capability

# Machine tool coolant supply Medium and High Pressure Pumps

Very diverse requirements in terms of machine supply require different pump concepts. Small and compact for external cooling, medium pressure requirements up to 50 bar for internal cooling or high pressure of up to 200 bar. Uncontrolled or controlled, designed for optimum energy usage.

Coolant pumps, that's us!



## TS | TC



<b>Impellers</b>	peripheral / closed
<b>Fluids</b>	coolants, emulsions, oils
<b>Volumetric delivery</b>	up to 600 l/min
<b>Delivery head</b>	up to 225 m

### Immersion Pumps (TS)

- Ideal for external cooling
- Compact design
- Short immersion depths
- Bronze version for water applications

### Immersion Pumps (TC)

- Especially developed to supply internally cooled tools with coolant fluid
- Closed impellers provide optimal hydraulic efficiencies while minimizing power consumption
- Suited for grinding applications
- Pump performance curves can be regulated using an adapted frequency converter
- SAE flange optional

## TH | FH



<b>Impellers</b>	closed
<b>Fluids</b>	coolants, emulsions, oils
<b>Volumetric delivery</b>	up to 600 l/min
<b>Delivery head</b>	up to 520 m

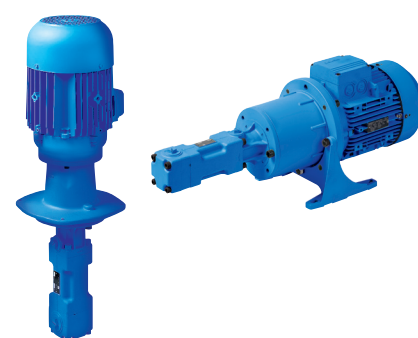
### Immersion Pumps

- Optimal hydraulic efficiency due to closed impellers
- An even wider range of performance curves
- Improved suction capability
- Pump performance curves can be regulated using an adapted frequency converter
- Grinding version available
- SAE flange optional

### Pressure Boosting Pumps

- FH series for pressure boosting at inlet pressures of up to 26 bar
- Optimal hydraulic efficiency due to closed impellers
- An even wider range of performance curves
- Pump performance curves can be regulated using an adapted frequency converter

## BFS | TFS | FFS



<b>Spindles</b>	hardened, precision ground
<b>Fluids</b>	coolants, emulsions, oils
<b>Volumetric delivery</b>	up to 878 l/min
<b>Delivery pressure</b>	up to 200 bar

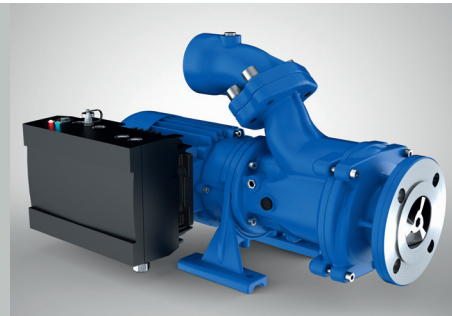
### High Pressure Immersion Pumps

- Highly wear-resistant silicon carbide housings and specially hardened spindles
- Excellent efficiencies
- 6 sizes for optimum operating point selection
- Available fully assembled with mounting plate, valve and piping
- Available with adapted frequency converter for optimum adaptation to the operating point

# Options and more...

Comprehensive options such as frequency converter, immersion depth extensions, various impeller materials and valves round off the product range. Detailed consultant advice and joint development of your specific pump solution are priority matters for us. In our free-of-charge training seminars, we pass on our technical expertise and knowledge to you.

Coolant pumps, that's us!

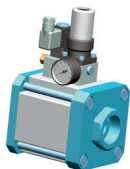


## Flanges



- SAE/45 degree flange
- Available with vertical or horizontal pipe connection
- Versions G, NPT and RC
- Pressure gauge G $\frac{1}{4}$
- Regulating valve for setting volumetric flow rates

## Valves



- Non-adjustable, direct operated pressure relief valves
- Adjustable, direct operated pressure relief valves
- Valves variably controlled by compressed air (manually or via electrical set points)

## Frequency converter



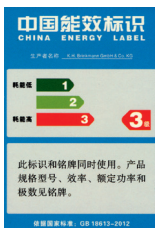
- Optimum addition to the product range
- The energy-saver
- Approaching various operating points in the performance curve field
- Optimum fine-turning of pump to suit the operating point
- Adapted frequency converter for up to 45 kW

## Impellers



- Closed
- Peripheral
- Semi-open
- Wear resistant
- Different materials

## Standards and approvals



- IE2 as standard
- IE3 as an option
- cUL approval
- GB3 approval
- ATEX approval for Zone 22 II 3D
- Harting connector
- Various country-specific approvals on request

## Mounting plate and piping



- Screw spindle pumps complete with mounting plate, valve and piping
- Tandem-arrangement of TH and FH pumps complete with mounting plate and piping

## Immersion depths



- Immersion depth adjustment via empty stages (TC, TH)
- Long immersion depths of up to 2 m on request (STA)
- Thread in suction cover for extension pipe (STA, TC, TH)

## Customized solutions



- Individual development for your specific application
- Extensive hydraulic module system for optimum pump selection
- Know-how in short series

## Training and consultancy support



- Regular seminars on application-specific pump topics
- Expert consultancy support from our in-house Sales Service team, and directly out on site by our Field Service
- Free of charge use of the "BPTubes" program to compute pipework

# *The Brinkmann Pumps network – This is the way to find us.*



BRINKMANN PUMPS has a global presence and direct representation throughout Europe, Asia and North America. This ensures quick response times, competent consulting personnel and the highest level of service, which Brinkmann Pumps is known for, anytime and anywhere. Visit our website – where you will find all the contact details for our representative offices. Visit us and convince yourself of our capabilities.

Welcome to BRINKMANN PUMPS.



## **BRINKMANN PUMPS**

**K.H. Brinkmann GmbH & Co. KG**  
Friedrichstraße 2  
58791 Werdohl  
Germany

**Brinkmann Pumps Inc.**  
47060 Cartier Drive  
Wixom, MI 48393  
United States

**Brinkmann Pumps Japan Co. Ltd.**  
2-19-12, Engyo Fujisawa  
Kanagawa, 252-0805  
Japan

T +49 2392 5006-0  
F +49 2392 5006-180  
sales@brinkmannpumps.de  
www.brinkmannpumps.de

T +1 248 926 9400  
F +1 248 926 9405  
sales@brinkmannpumps.com  
www.brinkmannpumps.com

T +81 466 778320  
F +81 466 778321  
sales@brinkmannpumps.jp  
www.brinkmannpumps.jp