

ELECTRICAL ACTUATORS TYPES SA 05 AND SA 05S

INSTALLATION AND MAINTENANCE MANUAL



1. DESCRIPTION

- 1.1 Electric actuator for ¼ turn valves.
- 1.2 Complete description on technical data sheet 23010.
- 1.3 Before any use, read carefully this manual.

2. GARANTY

- 2.1 Before contacting us, make sure to identify the type of actuator.
- 2.2 The SECTORIEL actuators are guaranteed 12 months after the delivery date. The defective pieces, after our expertise, will be replaced at our own expenses. We will not accept any claim of damage caused by a wrong use or modification of the actuator.

3. VERIFICATIONS AT THE DELIVERY

- 3.1 When delivered, check :
 - quality of the package,
 - conformity of the actuator to the ordered one,
 - possible damages.
- 3.2 It is recommended to install the actuator right after the delivery and not to leave it without using it. If the device is stored, it has to be in a dry and sheltered place.

4. PRECAUTIONS OF USE

- 4.1 Before installation, please check that there is no depressurisation and that the temperature is normal.
- 4.2 Do not install in an explosive area.
- 4.3 For an indoor and an outdoor installation, the protection class is IP67. Do not immerge the actuator nor install it in a marine area.
- 4.4 Do not connect the actuator to the electricity during the installation or during the maintenance of the valve on the pipe or the actuator on the valve.
- 4.5 Check the input voltage of the actuator before connecting.
- 4.6 Do not install the actuator in parallel with others. If necessary, use relays.
- 4.7 Do not install the actuator on valve with torque bigger than the nominal torque of the actuator.

5. INSTALLATION AND USE

- 5.1 Install the actuator on the valve (already done for actuated valve supplied by ourselves).
- 5.2 Do the wiring as indicated below.
- 5.3 Adjust the end switches (already done for actuated valve supplied by ourselves).

Informations données à titre indicatif et sous réserve de modifications éventuelles

ELECTRICAL ACTUATORS TYPES SA 05 AND SA 05S

INSTALLATION AND MAINTENANCE MANUAL

5.4 Check the move of the valve with the led on the cover.

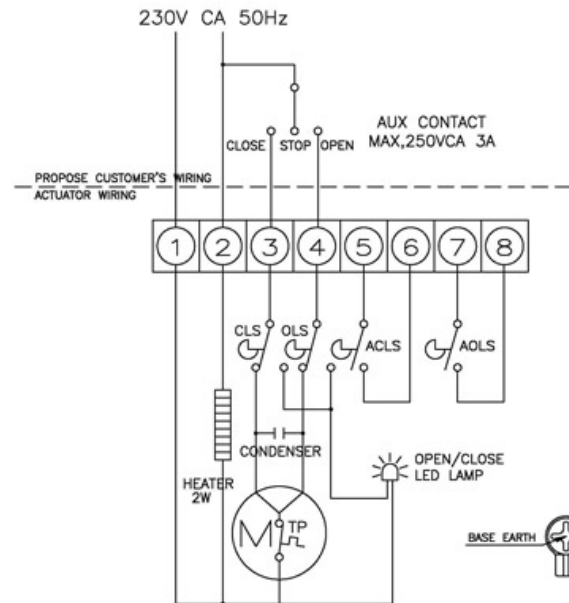
5.5 SA 05 and SA 05S actuators: to use the manual driving, turn off the electrical input and turn the hollow hexagonal screw with a 6 sided wrench.

7. CONNECTING SKETCH

Wiring for 230V 50Hz voltage

CLS : CLOSE LIMIT SWITCH (250VCA 3A)
 OLS : OPEN LIMIT SWITCH (250VCA 3A)
 ACLS : AUX. CLOSE LIMIT SWITCH (250VCA 3A)
 AOLS : AUX. OPEN LIMIT SWITCH (250VCA 3A)
 TP : THERMAL PROTECTOR

SWITCH	CLOSE	OPEN
CLS		
OLS		
ACLS		
AOLS		



6.1 The cams must be connected to the drive shaft.
 6.2 Rotation clockwise = closing of the valve. The micro-switch stops the actuator.

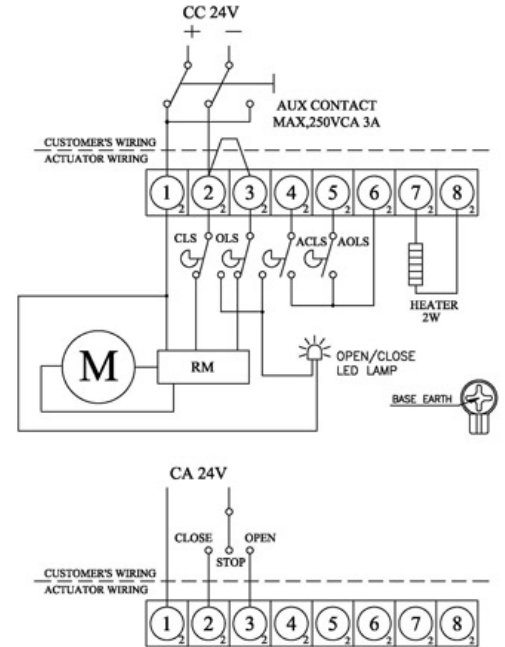
6.3 Rotation anti-clockwise = opening of the valve. The micro-switch stops the actuator.

1	Common
2	Phase
3	Controls closing
4	Controls opening
5	Auxillary switch closing
6	Auxillary switch closing
7	Auxillary switch closing
8	Auxillary switch opening

Wiring diagram for 24V ac/dc voltage

CLS : CLOSE LIMIT SWITCH (250VCA 3A)
 OLS : OPEN LIMIT SWITCH (250VCA 3A)
 ACLS : AUX. CLOSE LIMIT SWITCH (250VCA 3A)
 AOLS : AUX. OPEN LIMIT SWITCH (250VCA 3A)
 TP : THERMAL PROTECTOR
 RM : MOTOR REGULATION

SWITCH	CLOSE	OPEN
CLS		
OLS		
ACLS		
AOLS		



1	Common or +
2	Order "close"
3	Order "open"
4	Switch open
5	Switch closed
6	Common switch

Informations données à titre indicatif et sous réserve de modifications éventuelles